

DESIGNER

CWS ARCHITECTS
ARCHITECTURE | INTERIOR DESIGN
434 CUMBERLAND AVENUE
PORTLAND, MAINE 04101
P: 207.774.4016
F: 207.774.4015
WWW.CWSARCH.COM

OWNER

AVESTA BISHOP
STREET LP
307 CUMBERLAND AVE.
PORTLAND, MAINE 04101

PROJECT

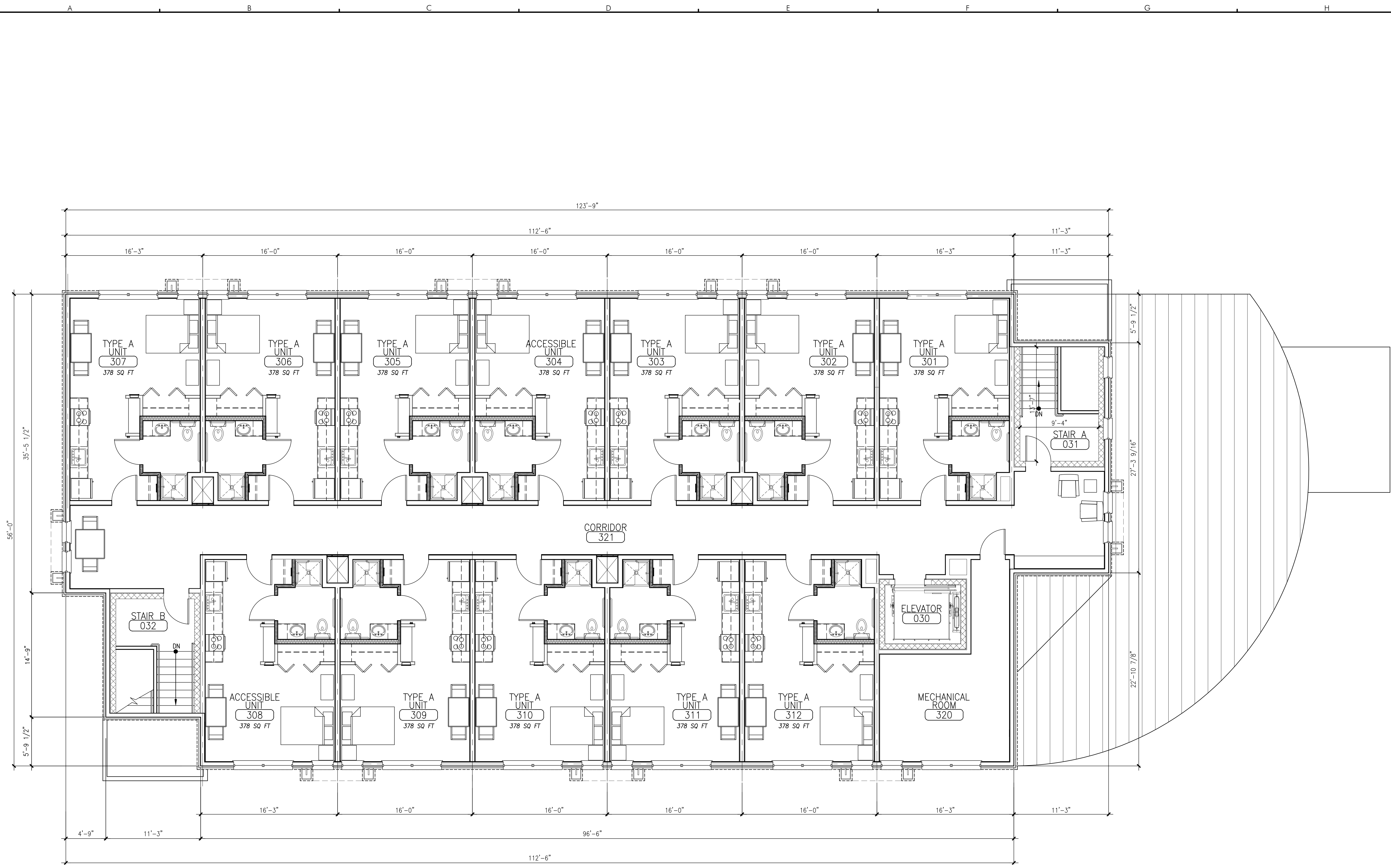
BISHOP STREET
APARTMENTS
PORTLAND, MAINE 04101

DRAWING

THIRD FLOOR PLAN
CWS PROJECT NUMBER:

REVISIONS

DRAWING NUMBER
A1.03
SCALE: AS NOTED
DATE: 05/29/15



A5 THIRD FLOOR PLAN

SCALE: 3/16" = 1'-0"

© 2015 CWS Architects, Inc. All rights reserved. No part of this drawing may be reproduced without the written permission of CWS Architects, Inc.

05/29/15 10:48 AM