

GENERAL NOTES:

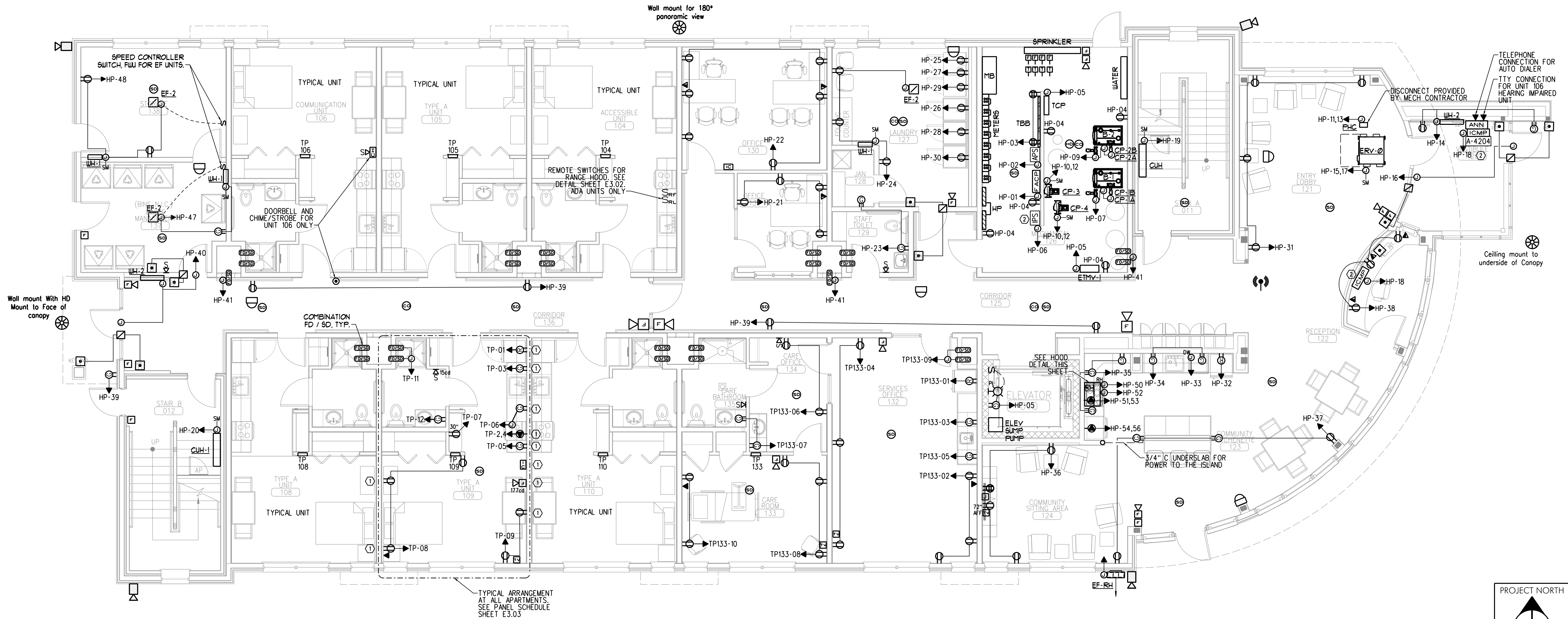
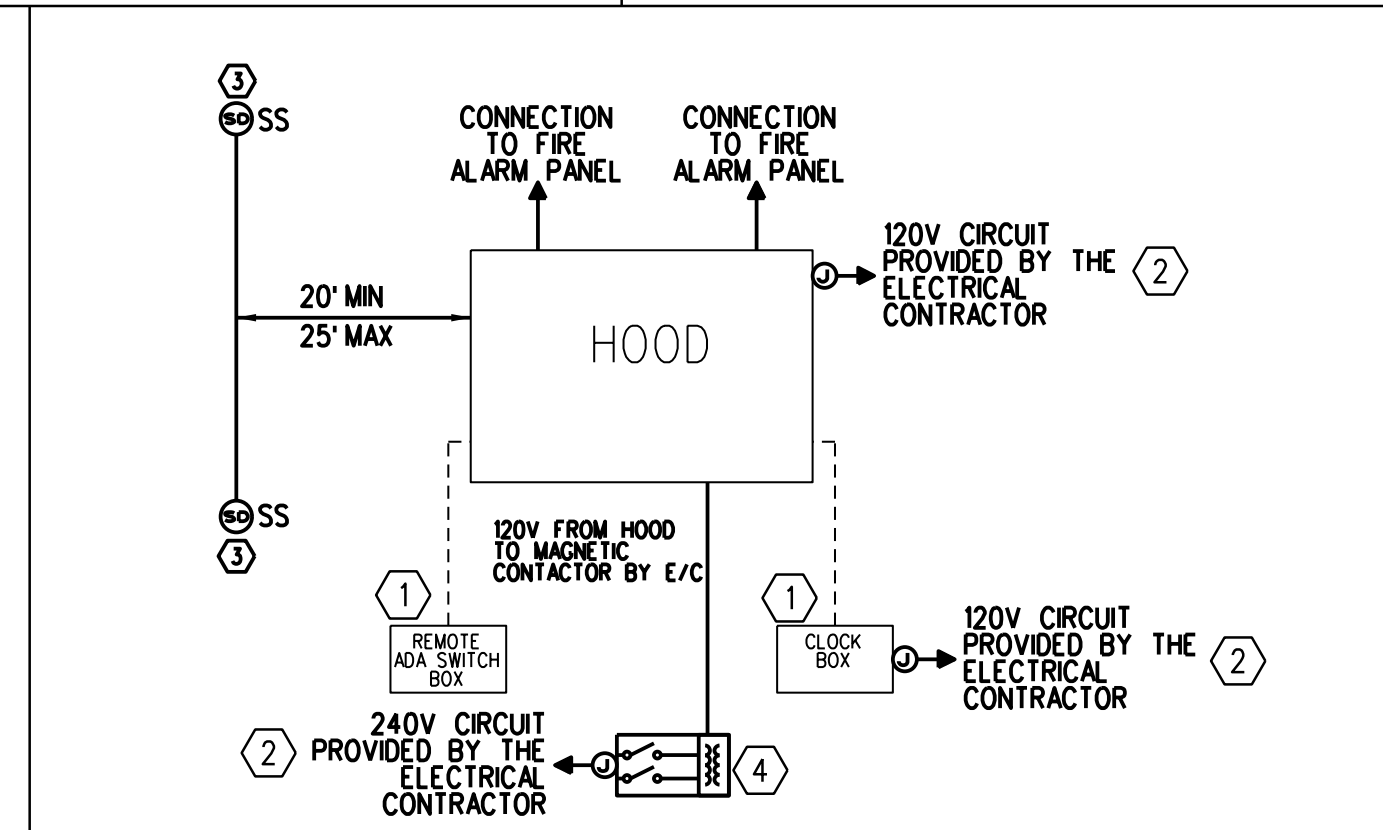
1. ALL OUTLETS AND/OR OPENINGS FOR CABLE TV AND/OR LOW VOLTAGE SYSTEMS INSTALLED IN FIRE RATED WALLS BACK TO BACK SHALL BE SEPARATED BY 24" MINIMUM OR BE PROTECTED WITH "PUTTY PADS" PER 2009 INTERNATIONAL BUILDING CODE SECTION 713.3.2
2. CONTRACTOR SHALL ROUGH IN BOXES IN ONE OF EACH UNIT TYPE FOR REVIEW IN THE FIELD BY THE OWNER.
3. MINIMUM WIRE SIZE IS #12 AWG - #14 AWG WIRE IS NOT PERMITTED.
4. PROVIDE AIR-VAPOR BARRIER ELECTRICAL BOXES AT EXTERIOR WALLS, LESSCO OR EQUIVALENT.
5. REFER TO ARCHITECTURAL REFLECTED CEILING PLAN TO COORDINATE THE LOCATION OF LIGHTING FIXTURES.
6. ALL PRODUCTS OF COMBUSTION DETECTORS (SMOKE DETECTORS) SHALL PROVIDE BOTH AUDIO AND VISUAL ALARMS.
7. ALL WIRING PENETRATING INTO BUILDING THERMAL ENVELOPE COMPONENTS SHALL BE PROPERLY "AIR-SEALED".
8. SWITCHES FOR RANGE HOOD FAN AND LIGHT SHALL BE MOUNTED AT COUNTER HEIGHT.
9. ELECTRICAL PANELS SHALL BE MOUNTED WITH THE TOP BREAKER NOT HIGHER THAN 48" AFF FOR ACCESSIBLE UNITS.
10. UNIT THERMOSTATS SHALL BE MOUNTED NOT HIGHER THAN 48" AFF FOR ADA UNITS.

ELECTRICAL KEY NOTES

- ① SWITCHES, OUTLETS, TEL JACKS AND TV JACKS TO BE STAGGERED IN COMMON WALLS BETWEEN UNITS. TYPICAL. PROVIDE PUTTY PADS AND/OR USE FIRE RATED BOXES IN INSTANCES WHERE DEVICES CANNOT BE PROPERLY STAGGERED.
- ② REFER TO INTERCOM RISER DIAGRAM SHEET E3.01 FOR ADDITIONAL INFORMATION

UNIT FIRE ALARM NOTES:

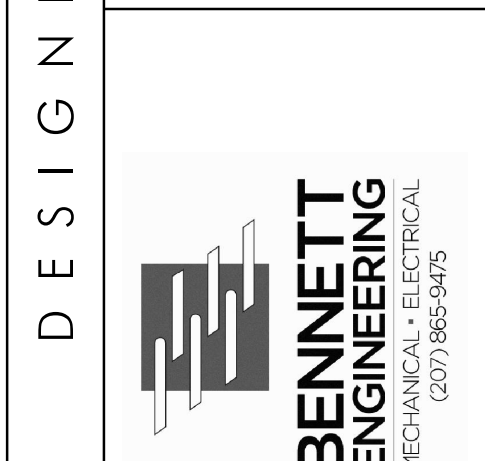
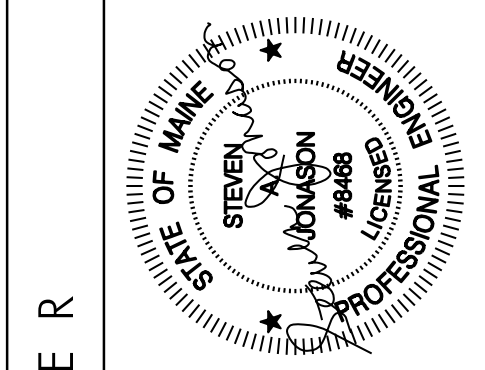
1. SUPERVISED CENTRAL SYSTEM ACTIVATION ALL SYSTEM AUDIO/VISUAL AND VISUAL ONLY DEVICES SHALL ALARM.
 2. WHEN UNIT SMOKE DETECTOR GOES INTO ALARM ALL SINGLE STATION AUDIO/VISUAL AND VISUAL ONLY DEVICES WITHIN THAT UNIT WILL ACTIVATE. THIS WILL NOT ACTIVATE THE ENTIRE BUILDING SYSTEM.
 3. THE WALL MOUNTED HORN/STROBES WITHIN THE LIVING UNITS SHALL BE CONNECTED TO THE SUPERVISED CENTRAL SYSTEM.
 4. INTERCONNECT ALL 120 VOLT SINGLE STATION SMOKE DETECTORS WITHIN EACH LIVING UNIT. ALL INTERCONNECTED SMOKE DETECTORS SHALL BE ON THE SAME CIRCUIT FOR PROPER OPERATION. REFER TO MANUFACTURER'S INSTALLATION MANUAL AND MOUNT DETECTORS IN ACCORDANCE WITH MANUFACTURER'S RECOMMENDATIONS.
 5. CARBON MONOXIDE DETECTORS (120V) IN RESIDENCES SHALL BE INSTALLED AT LEAST 10 FEET FROM ANY HEAT SOURCE.
 6. INTERCONNECT ALL 120 VOLT CARBON MONOXIDE (CO) DETECTORS WITHIN EACH LIVING UNIT. ALL INTERCONNECTED CO DETECTORS SHALL BE ON THE SAME CIRCUIT FOR PROPER OPERATION. REFER TO MANUFACTURER'S INSTALLATION MANUAL AND MOUNT DETECTORS IN ACCORDANCE WITH MANUFACTURER'S RECOMMENDATIONS. CO DETECTORS SHALL HAVE AN ALARM SOUND THAT IS DIFFERENT THAN THE LIVING UNIT SMOKE DETECTORS AND FIRE ALARM SYSTEM ALARMS.
- AUDIBLE ALARM Db LEVELS SHALL COMPLY WITH NFPA 72.
8. A/V DEVICES IN BEDROOMS SHALL BE 177Cd.



E1 FIRST FLOOR ELECTRICAL PLAN
SCALE: 3/16" = 1'-0"



DRAWING NUMBER
E2.01
SCALE: AS NOTED
DATE: 01/08/2016



OWNER
AVESTA BISHOP STREET, LP
307 CUMBERLAND AVE.,
PORTLAND, MAINE 04101

PROJECT
BISHOP STREET
APARTMENTS
72 BISHOP STREET
PORTLAND, MAINE 04101

DRAWING
FIRST FLOOR
ELECTRICAL PLAN
CWS PROJECT NUMBER: 14-013

REVISIONS

NO.	DATE	DESCRIPTION

ISSUED FOR BID

GENERAL NOTES:

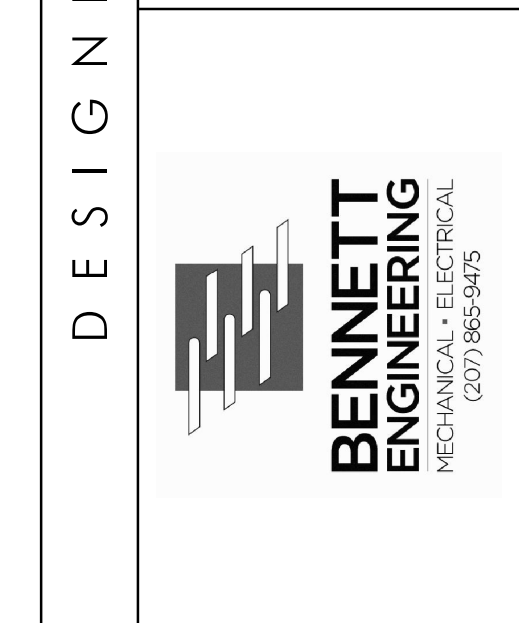
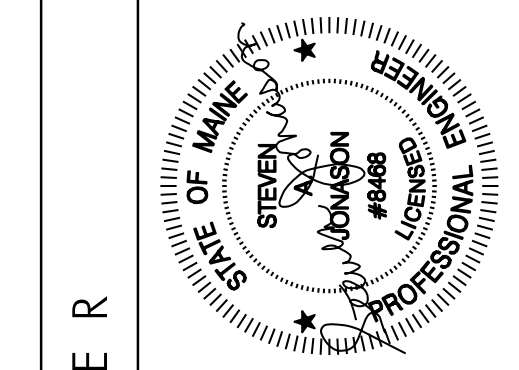
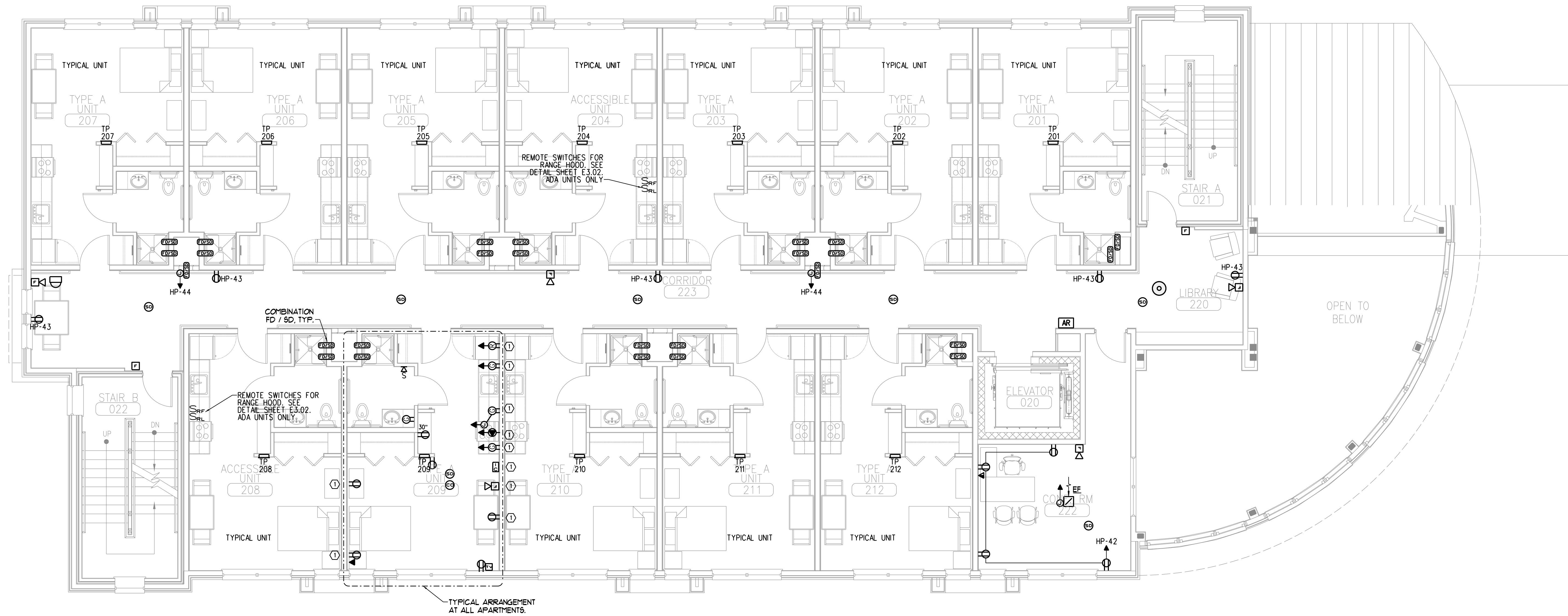
1. ALL OUTLETS AND/OR OPENINGS FOR CABLE TV AND/OR LOW VOLTAGE SYSTEMS INSTALLED IN FIRE RATED WALLS BACK TO BACK SHALL BE SEPARATED BY 24" MINIMUM OR BE PROTECTED WITH "PUTTY PADS" PER 2009 INTERNATIONAL BUILDING CODE SECTION 713.3.2
2. CONTRACTOR SHALL ROUGH IN BOXES IN ONE OF EACH UNIT TYPE FOR REVIEW IN THE FIELD BY THE OWNER.
3. MINIMUM WIRE SIZE IS #12 AWG - #14 AWG WIRE IS NOT PERMITTED.
4. PROVIDE AIR-VAPOR BARRIER ELECTRICAL BOXES AT EXTERIOR WALLS, LESSCO OR EQUIVALENT.
5. REFER TO ARCHITECTURAL REFLECTED CEILING PLAN TO COORDINATE THE LOCATION OF LIGHTING FIXTURES.
6. ALL PRODUCTS OF COMBUSTION DETECTORS (SMOKE DETECTORS) SHALL PROVIDE BOTH AUDIO AND VISUAL ALARMS.
7. ALL WIRING PENETRATING INTO BUILDING THERMAL ENVELOPE COMPONENTS SHALL BE PROPERLY "AIR-SEALED".
8. SWITCHES FOR RANGE HOOD FAN AND LIGHT SHALL BE MOUNTED AT COUNTER HEIGHT.
9. ELECTRICAL PANELS SHALL BE MOUNTED WITH THE TOP BREAKER NOT HIGHER THAN 48" AFF FOR ACCESSIBLE UNITS.
10. UNIT THERMOSTATS SHALL BE MOUNTED NOT HIGHER THAN 48" AFF FOR ADA UNITS.

ELECTRICAL KEY NOTES

1. SWITCHES, OUTLETS, TEL JACKS AND TV JACKS TO BE STAGGERED IN COMMON WALLS BETWEEN UNITS TYPICAL. PROVIDE PUTTY PADS AND/OR USE FIRE RATED BOXES IN INSTANCES WHERE DEVICES CANNOT BE PROPERLY STAGGERED.

UNIT FIRE ALARM NOTES:

1. SUPERVISED CENTRAL SYSTEM ACTIVATION ALL SYSTEM AUDIO/VISUAL AND VISUAL ONLY DEVICES SHALL ALARM.
 2. WHEN UNIT SMOKE DETECTOR GOES INTO ALARM ALL SINGLE STATION AUDIO/VISUAL AND VISUAL ONLY DEVICES WITHIN THAT UNIT WILL ACTIVATE. THIS WILL NOT ACTIVATE THE ENTIRE BUILDING SYSTEM.
 3. THE WALL MOUNTED HORN/STROBES WITHIN THE LIVING UNITS SHALL BE CONNECTED TO THE SUPERVISED CENTRAL SYSTEM.
 4. INTERCONNECT ALL 120 VOLT SINGLE STATION SMOKE DETECTORS WITHIN EACH LIVING UNIT. ALL INTERCONNECTED SMOKE DETECTORS SHALL BE ON THE SAME CIRCUIT FOR PROPER OPERATION. REFER TO MANUFACTURER'S INSTALLATION MANUAL AND MOUNT DETECTORS IN ACCORDANCE WITH MANUFACTURER'S RECOMMENDATIONS.
 5. CARBON MONOXIDE DETECTORS (120V) IN RESIDENCES SHALL BE INSTALLED AT LEAST 10 FEET FROM ANY HEAT SOURCE.
 6. INTERCONNECT ALL 120 VOLT CARBON MONOXIDE (CO) DETECTORS WITHIN EACH LIVING UNIT. ALL INTERCONNECTED CO DETECTORS SHALL BE ON THE SAME CIRCUIT FOR PROPER OPERATION. REFER TO MANUFACTURER'S INSTALLATION MANUAL AND MOUNT DETECTORS IN ACCORDANCE WITH MANUFACTURER'S RECOMMENDATIONS. CO DETECTORS SHALL HAVE AN ALARM SOUND THAT IS DIFFERENT THAN THE LIVING UNIT SMOKE DETECTORS AND FIRE ALARM SYSTEM ALARMS.
- AUDIBLE ALARM Db LEVELS SHALL COMPLY WITH NFPA 72.
8. A/V DEVICES IN BEDROOMS SHALL BE 177Cd.



DESIGNER

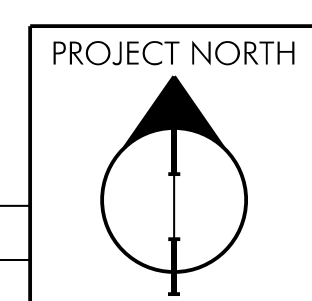
OWNER
AVESTA BISHOP STREET, LP
307 CUMBERLAND AVE.,
PORTLAND, MAINE 04101

PROJECT
BISHOP STREET APARTMENTS
72 BISHOP STREET
PORTLAND, MAINE 04101

DRAWING
SECOND FLOOR ELECTRICAL PLAN
CWS PROJECT NUMBER: 14-013

REVISIONS

NO.	DATE	DESCRIPTION



DRAWING NUMBER
E2.02
SCALE: AS NOTED
DATE: 01/08/2016

GENERAL NOTES:

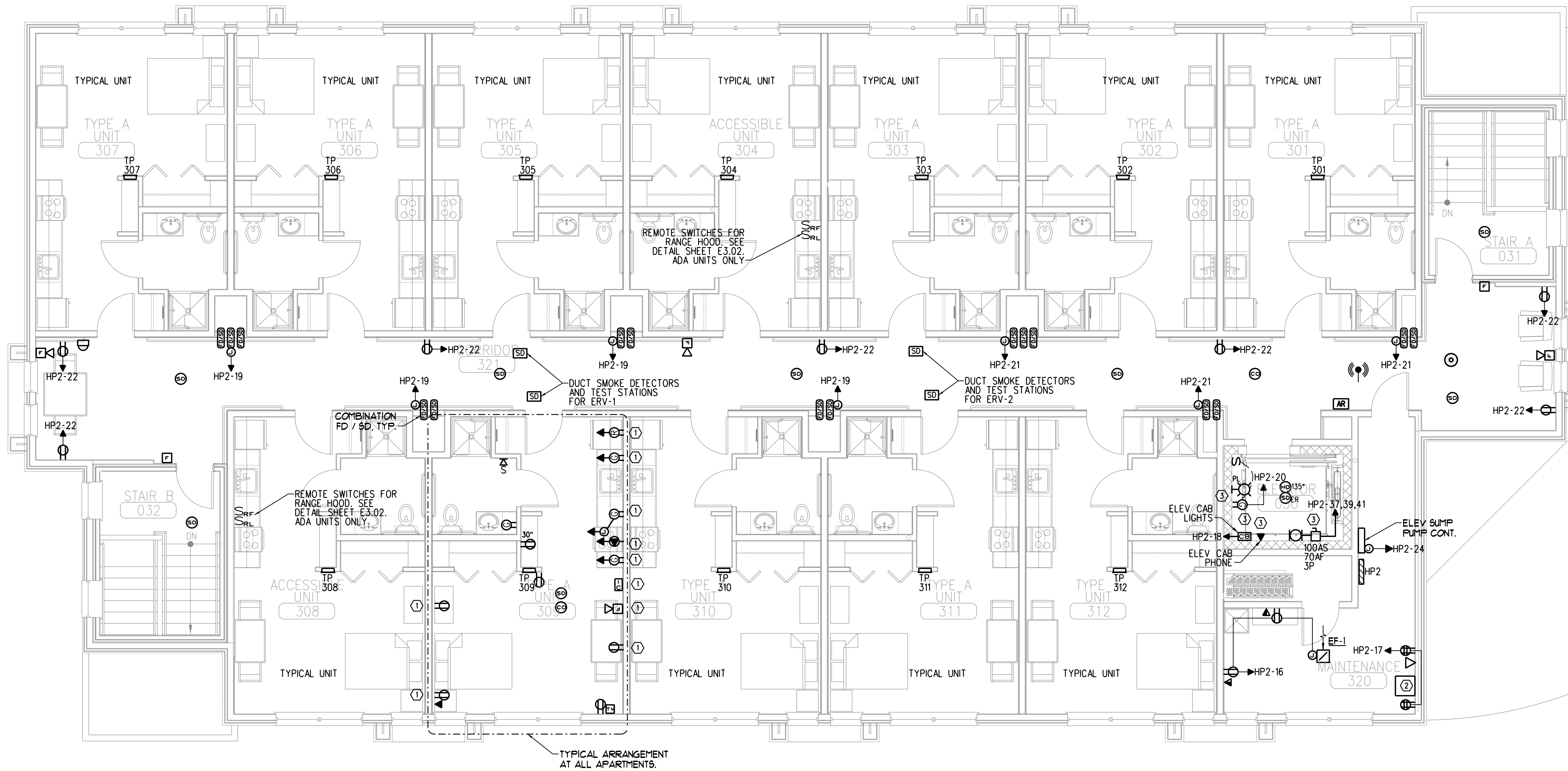
1. ALL OUTLETS AND/OR OPENINGS FOR CABLE TV AND/OR LOW VOLTAGE SYSTEMS INSTALLED IN FIRE RATED WALLS BACK TO BACK SHALL BE SEPARATED BY 24" MINIMUM OR BE PROTECTED WITH "PUTTY PADS" PER 2009 INTERNATIONAL BUILDING CODE SECTION 713.3.2
2. CONTRACTOR SHALL ROUGH IN BOXES IN ONE OF EACH UNIT TYPE FOR REVIEW IN THE FIELD BY THE OWNER.
3. MINIMUM WIRE SIZE IS #12 AWG - #14 AWG WIRE IS NOT PERMITTED.
4. PROVIDE AIR-VAPOR BARRIER ELECTRICAL BOXES AT EXTERIOR WALLS. LESSCO OR EQUIVALENT.
5. REFER TO ARCHITECTURAL REFLECTED CEILING PLAN TO COORDINATE THE LOCATION OF LIGHTING FIXTURES.
6. ALL PRODUCTS OF COMBUSTION DETECTORS (SMOKE DETECTORS) SHALL PROVIDE BOTH AUDIO AND VISUAL ALARMS.
7. ALL WIRING PENETRATING INTO BUILDING THERMAL ENVELOPE COMPONENTS SHALL BE PROPERLY "AIR-SEALED".
8. SWITCHES FOR RANGE HOOD FAN AND LIGHT SHALL BE MOUNTED AT COUNTER HEIGHT.
9. ELECTRICAL PANELS SHALL BE MOUNTED WITH THE TOP BREAKER NOT HIGHER THAN 48" AFF FOR ACCESSIBLE UNITS.
10. UNIT THERMOSTATS SHALL BE MOUNTED NOT HIGHER THAN 48" AFF FOR ADA UNITS.

ELECTRICAL KEY NOTES

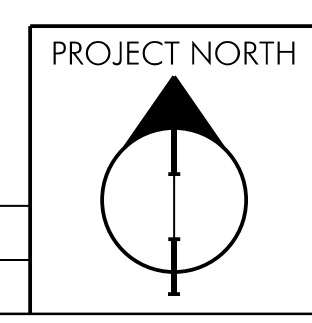
1. SWITCHES, OUTLETS, TEL JACKS AND TV JACKS TO BE STAGGERED IN COMMON WALLS BETWEEN UNITS. TYPICAL. PROVIDE PUTTY PADS AND/OR USE FIRE RATED BOXES IN INSTANCES WHERE DEVICES CANNOT BE PROPERLY STAGGERED.
2. MDA-ERK2125 19" DATA RACK WITH MDA-FD21 SOLID DOOR, MDA-OFAN FAN, MDA-PD1010SCRN 10 OUTLET POWER STRIP AND CAT 6 PATCH PANEL. ONE DATA JACK WILL BE REQUIRED FOR INTERNET CONNECTIVITY. SECURADYNE SYSTEMS TO PROVIDE POE SWITCH AND RECORDER.
3. PROVIDE INDICATED EQUIPMENT AT TOP LANDING OF ELEVATOR SHAFT. COORDINATE EXACT LOCATIONS WITH ELEVATOR VENDOR DRAWINGS.

UNIT FIRE ALARM NOTES:

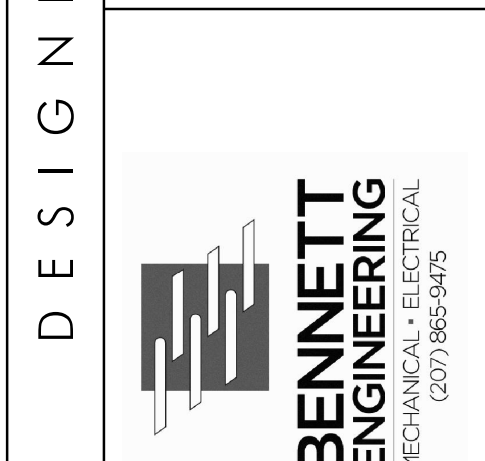
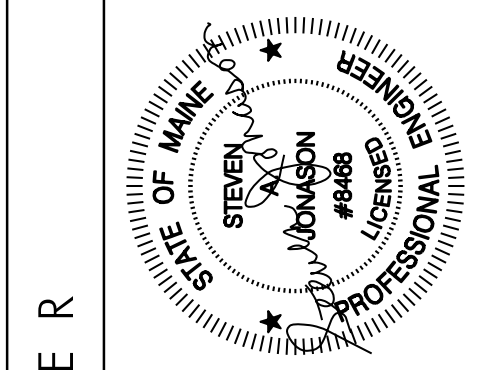
1. SUPERVISED CENTRAL SYSTEM ACTIVATION ALL SYSTEM AUDIO/VISUAL AND VISUAL ONLY DEVICES SHALL ALARM.
 2. WHEN UNIT SMOKE DETECTOR GOES INTO ALARM ALL SINGLE STATION AUDIO/VISUAL AND VISUAL ONLY DEVICES WITHIN THAT UNIT WILL ACTIVATE. THIS WILL NOT ACTIVATE THE ENTIRE BUILDING SYSTEM.
 3. THE WALL MOUNTED HORN/STROBES WITHIN THE LIVING UNITS SHALL BE CONNECTED TO THE SUPERVISED CENTRAL SYSTEM.
 4. INTERCONNECT ALL 120 VOLT SINGLE STATION SMOKE DETECTORS WITHIN EACH LIVING UNIT. ALL INTERCONNECTED SMOKE DETECTORS SHALL BE ON THE SAME CIRCUIT FOR PROPER OPERATION. REFER TO MANUFACTURER'S INSTALLATION MANUAL AND MOUNT DETECTORS IN ACCORDANCE WITH MANUFACTURER'S RECOMMENDATIONS.
 5. CARBON MONOXIDE DETECTORS (120V) IN RESIDENCES SHALL BE INSTALLED AT LEAST 10 FEET FROM ANY HEAT SOURCE.
 6. INTERCONNECT ALL 120 VOLT CARBON MONOXIDE (CO) DETECTORS WITHIN EACH LIVING UNIT. ALL INTERCONNECTED CO DETECTORS SHALL BE ON THE SAME CIRCUIT FOR PROPER OPERATION. REFER TO MANUFACTURER'S INSTALLATION MANUAL AND MOUNT DETECTORS IN ACCORDANCE WITH MANUFACTURER'S RECOMMENDATIONS. CO DETECTORS SHALL HAVE AN ALARM SOUND THAT IS DIFFERENT THAN THE LIVING UNIT SMOKE DETECTORS AND FIRE ALARM SYSTEM ALARMS.
- AUDIBLE ALARM Db LEVELS SHALL COMPLY WITH NFPA 72.
8. A/V DEVICES IN BEDROOMS SHALL BE 177Cd.



E1 THIRD FLOOR ELECTRICAL PLAN
SCALE: 3/16" = 1'-0"



DRAWING NUMBER
E2.03
SCALE: AS NOTED
DATE: 01/08/2016



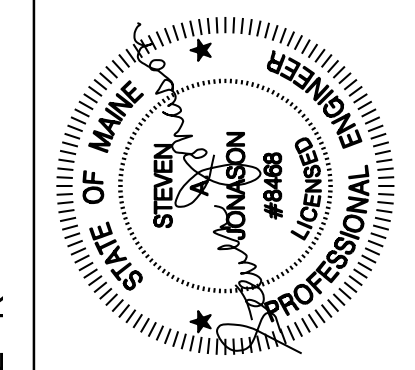
DESIGNER
BENNETT ENGINEERING
MECHANICAL/ELECTRICAL
(207) 866-5455

OWNER
AVESTA BISHOP STREET, LP
307 CUMBERLAND AVE.,
PORTLAND, MAINE 04101

PROJECT
BISHOP STREET APARTMENTS
72 BISHOP STREET
PORTLAND, MAINE 04101

DRAWING
THIRD FLOOR ELECTRICAL PLAN
CWS PROJECT NUMBER: 14-013

REVISIONS	DATE	DESCRIPTION



DESIGNER

OWNER

AVESTA BISHOP STREET, LP
307 CUMBERLAND AVE.,
PORTLAND, MAINE 04101

PROJECT

BISHOP STREET
APARTMENTS
72 BISHOP STREET
PORTLAND, MAINE 04101

DRAWING

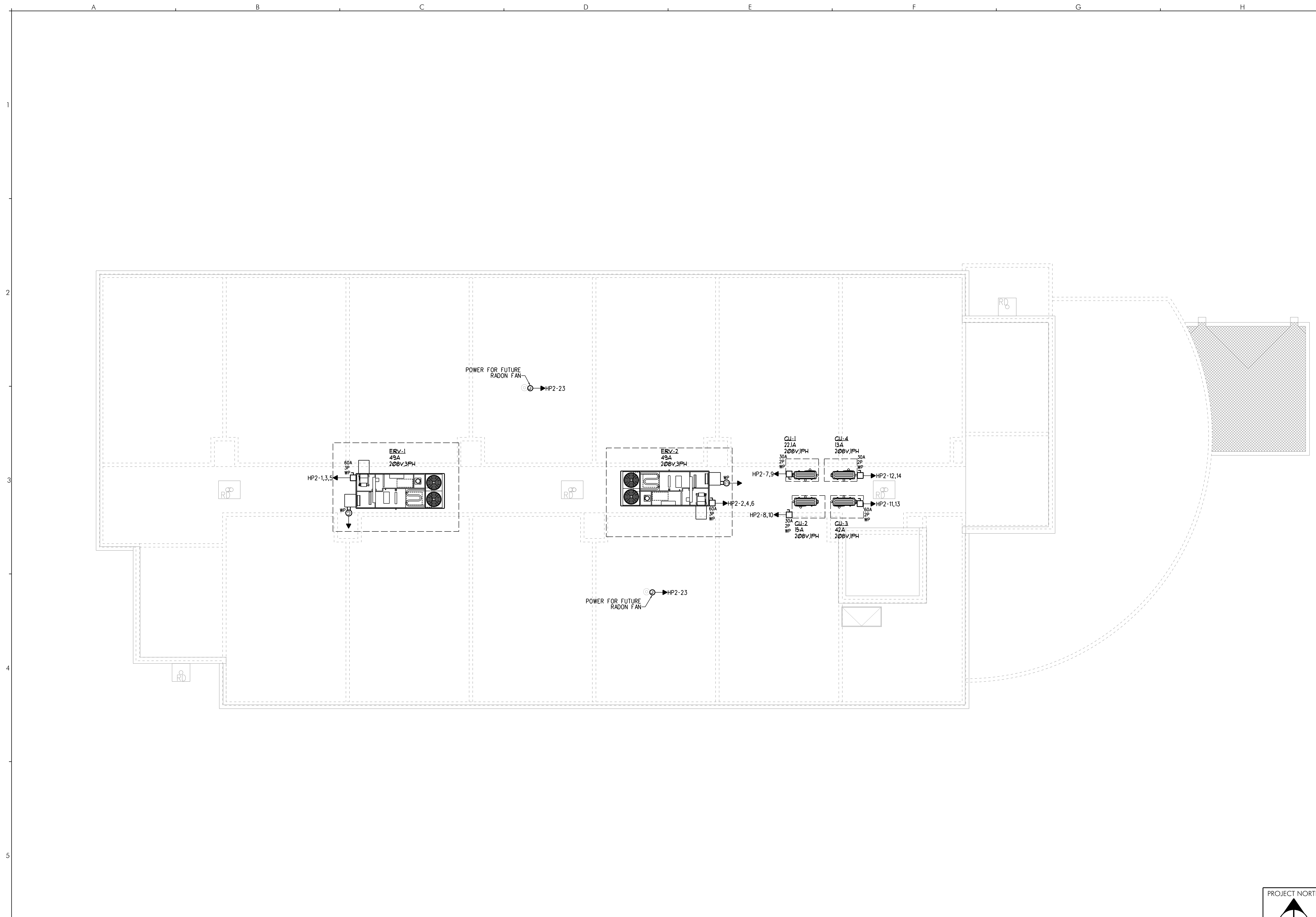
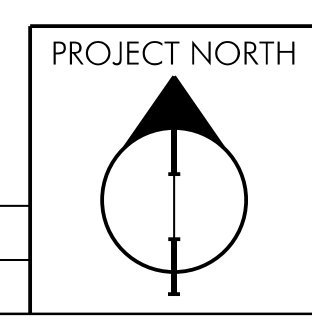
ROOF ELECTRICAL
PLAN
CWS PROJECT NUMBER: 14.013

REVISIONS

NO.	DESCRIPTION

DRAWING NUMBER

E2.04
SCALE: AS NOTED
DATE: 01/08/2016



E1 ROOF ELECTRICAL PLAN
SCALE: 3/16" = 1'-0"