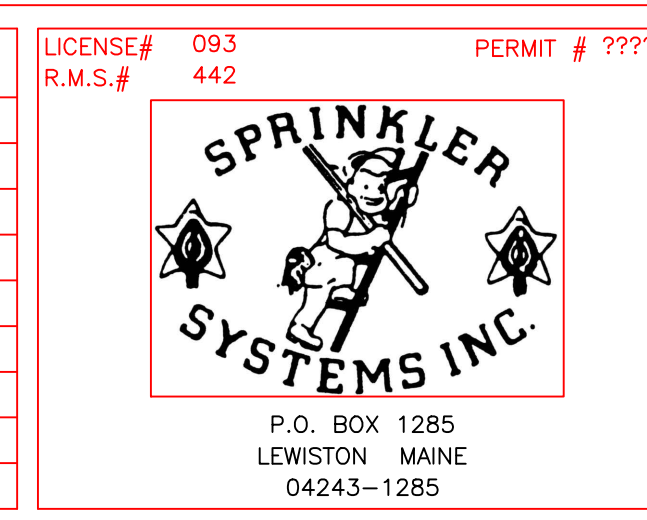


| 3rd FLOOR APARTMENT | 3rd FLOOR CONCEALED SPACE | 1st FLOOR COMMON AREA | 1st FLOOR MECHANICAL ROOM |
|--|--|---|--|
| HYDRAULIC DATA NAMEPLATE This Building is protected by a hydraulically designed Automatic Sprinkler System Location AREA-1 No. of Sprinkler 8 Basis of design 1. Density 1.10 gpm/sqft 2. Design area of discharge 900 sqft System Demand 1. Water Flow Rate ● Base 147.577 gpm 2. Residual Pressure ● Base 52.991 psi CUSHION = 12.156 psi | HYDRAULIC DATA NAMEPLATE This Building is protected by a hydraulically designed Automatic Sprinkler System Location AREA-2 No. of Sprinkler 10 Basis of design 1. Density 1.10 gpm/sqft 2. Design area of discharge 1000 sqft System Demand 1. Water Flow Rate ● Base 157.504 gpm 2. Residual Pressure ● Base 51.733 psi CUSHION = 13.314 psi | HYDRAULIC DATA NAMEPLATE This Building is protected by a hydraulically designed Automatic Sprinkler System Location AREA-3 No. of Sprinkler 15 Basis of design 1. Density 1.10 gpm/sqft 2. Design area of discharge LARGE ROOM sqft System Demand 1. Water Flow Rate ● Base 340.600 gpm 2. Residual Pressure ● Base 55.048 psi CUSHION = 7.848 psi | HYDRAULIC DATA NAMEPLATE This Building is protected by a hydraulically designed Automatic Sprinkler System Location AREA-4 No. of Sprinkler 4 Basis of design 1. Density 2.0 gpm/sqft 2. Design area of discharge ENTIRE ROOM sqft System Demand 1. Water Flow Rate ● Base 74.393 gpm 2. Residual Pressure ● Base 26.505 psi CUSHION = 37.883 psi |
| NOT MOST REMOTE | NOT MOST REMOTE | MOST REMOTE | NOT MOST REMOTE |

| SPRINKLER HEAD LEGEND | | | | | | | | | | |
|-----------------------|----------|---------|--------|--------|------------------|--------|------|---------|----------|-------|
| SYMBOL | MAKE | MODEL | SIN | FINISH | TYPE | TEMP | NPT | ORIFICE | K-FACTOR | TOTAL |
| ○ | RELIABLE | F1FR 56 | RA1414 | WHITE | SEMI-REC PENDING | 155° F | 1/2" | 1/2" | 5.6 | 37 |
| ○ | RELIABLE | F1FR 56 | RA1414 | WHITE | SEMI-REC PENDING | 200° F | 1/2" | 1/2" | 5.6 | 4 |
| ○ | RELIABLE | F1FR 56 | RA1414 | WHITE | PENDING | 155° F | 1/2" | 1/2" | 5.6 | 7 |
| ○ | RELIABLE | GS 56 | RA3415 | WHITE | CONCEALED | 165° F | 1/2" | 1/2" | 5.6 | 97 |
| ○ | RELIABLE | F1FR 56 | RA1425 | BRONZE | UPRIGHT | 200° F | 1/2" | 1/2" | 5.6 | 11 |
| ○ | RELIABLE | KFR-CSS | RA4454 | BRONZE | UPRIGHT | 212° F | 1/2" | 1/2" | 5.6 | 153 |
| ○ | RELIABLE | F1FR 56 | RA1435 | WHITE | SIDEWALL | 155° F | 1/2" | 1/2" | 5.6 | 30 |
| ○ | RELIABLE | F1FR 56 | RA1435 | BRONZE | SIDEWALL | 200° F | 1/2" | 1/2" | 5.6 | 1 |
| TOTAL = 340 | | | | | | | | | | |



| | | |
|--|--|------------------------|
| 72 BISHOP STREET APARTMENT PORTLAND, MAINE 04101 | | SCALE AS NOTED |
| CONTRACT WITH GREAT FALLS | | DRAWN BY JJP |
| SYSTEM TYPE | | CHECKED BY CDS |
| <input type="checkbox"/> WET <input type="checkbox"/> DRY <input type="checkbox"/> DELUGE <input type="checkbox"/> PREACTION <input type="checkbox"/> ME. LIFE <input type="checkbox"/> HYDRO-PRO | | DATE 05/15/2016 |
| NO. DATE DESCRIPTION | | TOTAL SPKRS ON JOB 340 |
| REVISIONS | | SHEET# 2 of 3 |
| PERMIT # 093 442 | | JOB# 16049 |

SUBMITTAL COPY