

City of Portland, Maine - Building or Use Permit Application
 389 Congress Street, 04101 Tel: (207) 874-8703, Fax: (207) 874-8716

PERMIT ISSUED		CBL:
Permit No: 02-0051	Issue Date: MAR 26 2002	293 A018001

Location of Construction: 80 Warren Ave	Owner Name: Masco	Owner Address: 2 Meadow Lane	Phone: 207-878-9285
Business Name: n/a	Contractor Name: Pike, Bruce	Contractor Address: 2 Meadow Lane Falmouth	Phone: 2078789285
Lessee/Buyer's Name: n/a	Phone: n/a	Permit Type: Additions - Commercial	Zone: B-4

Past Use: Commercial / Vacant Land	Proposed Use: Commercial / Foundation; Amendment to permit # 011416 Original site Plan # 20010148. Building Self Storage.	Permit Fee: \$1,871.00	Cost of Work: \$264,000.00	CEO District: 1
		FIRE DEPT: <input checked="" type="checkbox"/> Approved <input type="checkbox"/> Denied	INSPECTION: Use Group: S1 Type: 2	

Proposed Project Description: Build Self Storage Rentals	Signature: <i>[Signature]</i>	Signature: <i>[Signature]</i>
PEDESTRIAN ACTIVITIES DISTRICT (P.A.D.)		
Action: <input type="checkbox"/> Approved <input type="checkbox"/> Approved w/Conditions <input type="checkbox"/> Denied		
Signature:		Date:

Permit Taken By: gg	Date Applied For: 01/16/2001	Zoning Approval
-------------------------------	--	------------------------

1. This permit application does not preclude the Applicant(s) from meeting applicable State and Federal Rules. 2. Building permits do not include plumbing, septic or electrical work. 3. Building permits are void if work is not started within six (6) months of the date of issuance. False information may invalidate a building permit and stop all work..	Special Zone or Reviews <input type="checkbox"/> Shoreland <input type="checkbox"/> Wetland <input type="checkbox"/> Flood Zone <input type="checkbox"/> Subdivision <input checked="" type="checkbox"/> Site Plan Maj <input checked="" type="checkbox"/> Minor <input type="checkbox"/> MM <input type="checkbox"/> Date: <i>OK with conditions 3/19/01</i>	Zoning Appeal <input type="checkbox"/> Variance <input type="checkbox"/> Miscellaneous <input type="checkbox"/> Conditional Use <input type="checkbox"/> Interpretation <input type="checkbox"/> Approved <input type="checkbox"/> Denied Date:	Historic Preservation <input checked="" type="checkbox"/> Not in District or Landmark <input type="checkbox"/> Does Not Require Review <input type="checkbox"/> Requires Review <input type="checkbox"/> Approved <input type="checkbox"/> Approved w/Conditions <input type="checkbox"/> Denied Date:
--	---	---	--

CERTIFICATION

I hereby certify that I am the owner of record of the named property, or that the proposed work is authorized by the owner of record and that I have been authorized by the owner to make this application as his authorized agent and I agree to conform to all applicable laws of this jurisdiction. In addition, if a permit for work described in the application is issued, I certify that the code official's authorized representative shall have the authority to enter all areas covered by such permit at any reasonable hour to enforce the provision of the code(s) applicable to such permit.

 SIGNATURE OF APPLICANT ADDRESS DATE PHONE

 RESPONSIBLE PERSON IN CHARGE OF WORK, TITLE DATE PHONE

Application ID Number: 2-0051

Date: [] [] []

Department: Fire

Status: Approved with Conditions

Reviewer: Lt. McDougall

Comments: []

Approval Date: 01/23/2002

Event Date: 01/18/2002

OK to Issue Permit

Name: Lt. McDougall

Date: [] [] []

Time: [] []

Conditions Section

Doors shall swing in the direction of egress travel

Fire extinguishers shall be provided in accordance with NFPA 10

Create Date: 01/18/2002

By: gg

Update Date: 01/23/2002

By: dgc

Application ID Number: 2-0051

Delete Save Close

Department: Zoning

Status: Approved with Conditions

Reviewer: Marge Schmuckal

Comments: 80 Warren Ave

Approval Date: 01/18/2002

Given On Date: 01/18/2002

OK to Issue Permit

Name: Marge Schmuckal

Date: 01/18/2002

Date 2:

Conditions Section:

This permit is being approved on the basis of plans submitted. Any deviations shall require a separate approval before starting that work.

Separate permits shall be required for any new signage.

All previous conditions are still in force. The issuance of this permit does not recognize any changes to the original approved site plan

Create Date: 01/18/2002

By: gg

Update Date: 01/18/2002

By: mes

AJAY

02-0051
80 Warren Ave

CELEBRATING OUR 19TH YEAR

March 15, 2002

Mr. Mike Nugent
City of Portland ME
389 Congress Street Rm. 315
Portland ME 04101
PH#: 207/ 874-0704
FX#: 207/ 874-8716

Dear Mr. Nugent,

Mr. Bruce Pike requested we send you this enclosed copy of our current brochure, which includes a set of pullout drawings with the specifications required for the installation of (1) VRC storage lift for the jobsite located at Morrills Corner Self Storage, 24 Morris Street, Portland ME 04103. If you have any questions, please give us a call.

Sincerely,



Patti Shipley
AJAY Equipment Corporation

AJAY

Randy Vander Hill

Material & Vertical Storage Lifts

AJAY EQUIPMENT CORPORATION
712 S. RICHFIELD RD. • PLACENTIA, CA 92870-6760
(800) 521-2529 FAX (714) 792-0858

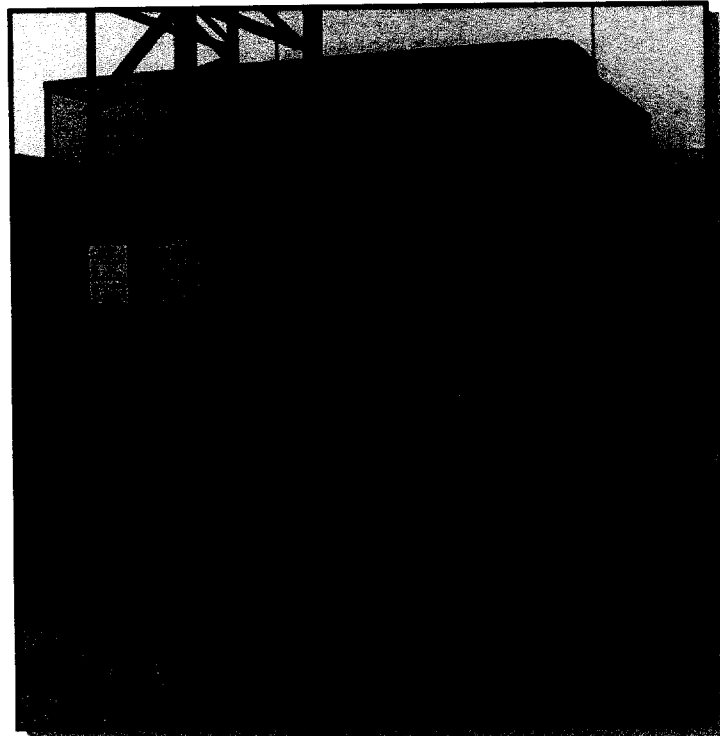
AJAY EQUIPMENT CORPORATION 712 S. RICHFIELD ROAD PLACENTIA, CA. 92870-6760
PH# 800-521-AJAY (2529) FX# 714-792-0858 www.ajaystoragelifts.com

SERVING THE STORAGE INDUSTRY SINCE 1983

AJAY

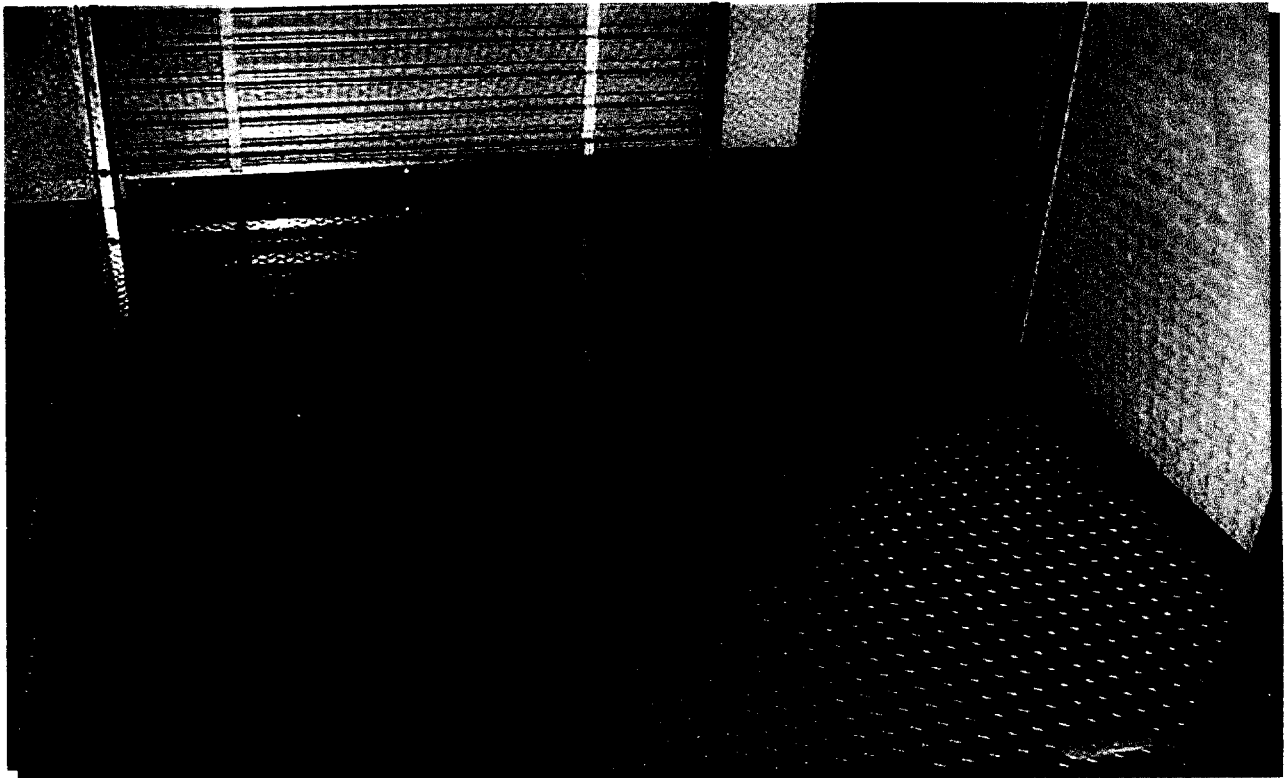


- **VERTICAL RECIPROCATING**
- **CONVEYORS (VRCs)**

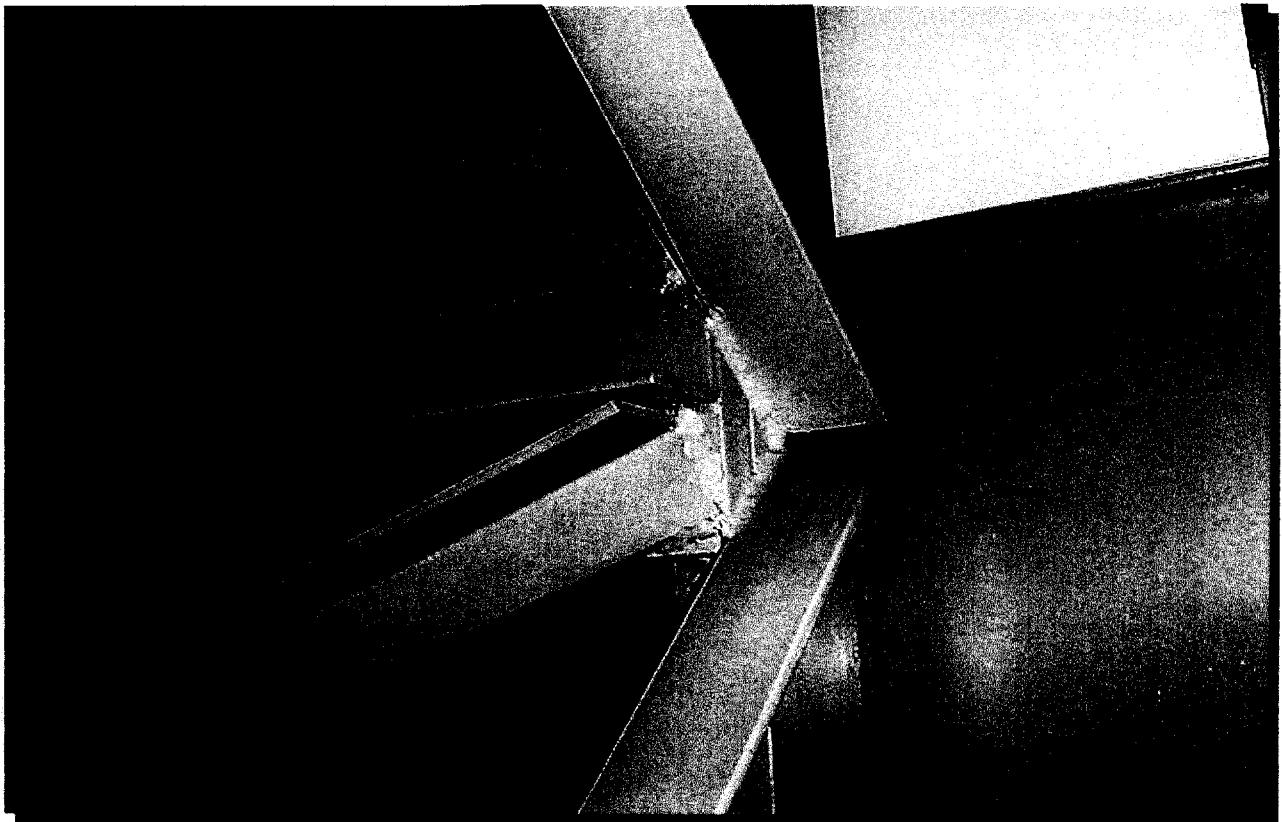


AJAY EQUIPMENT CORPORATION 712 S. Richfield Road, Placentia, CA. 92870-6760
800-521-AJAY (2529) Fax. 714-792-0858 www.ajaystoragelifts.com

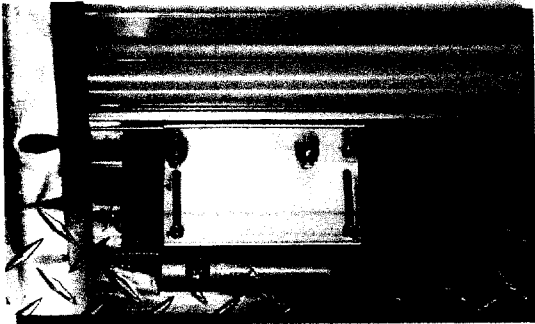
SERVING THE STORAGE INDUSTRY SINCE 1983



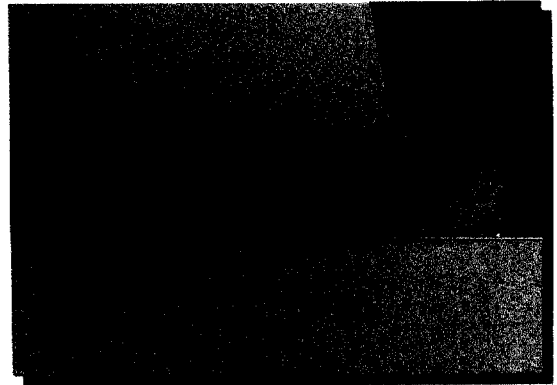
Non skid polished aluminum safety tread floor plate and view of cab interior.



Section view of our exclusive truss design mast. This truss design mast is the strongest free standing Vertical Reciprocating Conveyor design available.



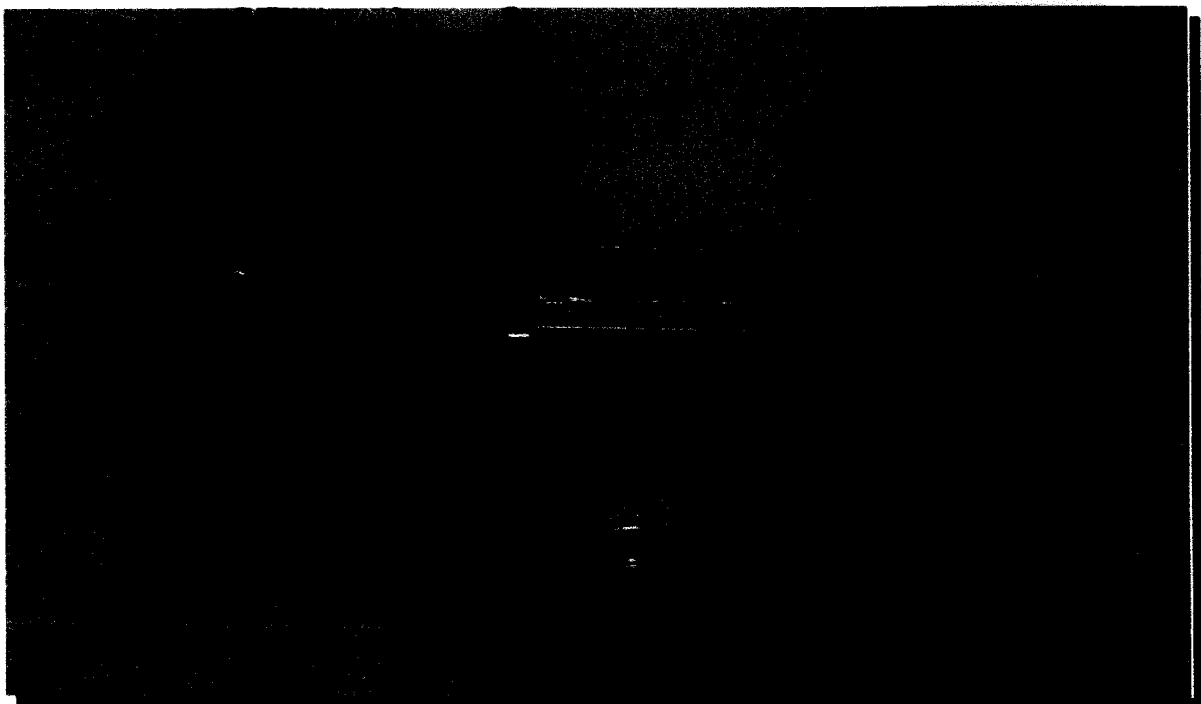
Roll-up-door floor mounted switch.



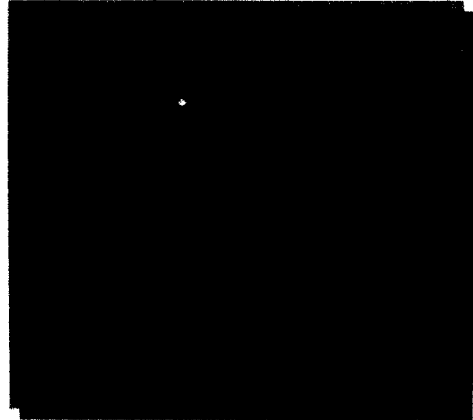
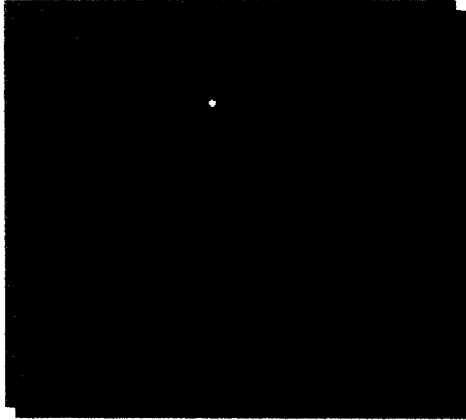
Ajay exclusive F.R.P. cab interior panels finished framed with heavy gauge anodized aluminum.



Close up view of our spring loaded posi-stop safety cam brake assembly. Safety cams prevent accidental carrier/platform free fall in the event of mechanical failure.

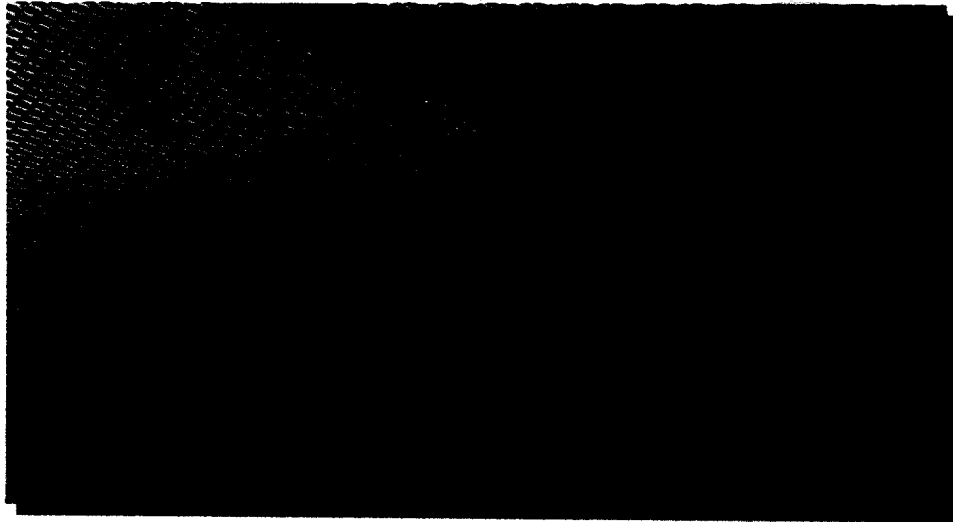


Ajay exclusive 4-way safety solenoid slide bolt interlock system. Shown installed on a customer/contractor supplied entry door with a standard passage lever handle assembly.

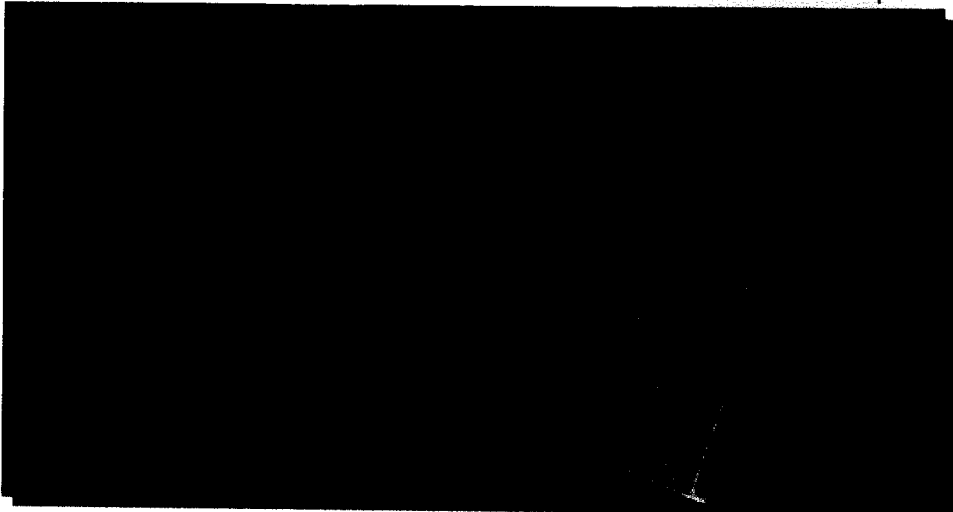


Exclusive indicator check light system and our NEMA 12 controls. Automatically checks and provides a visual light that all doors and interlocks are secured.

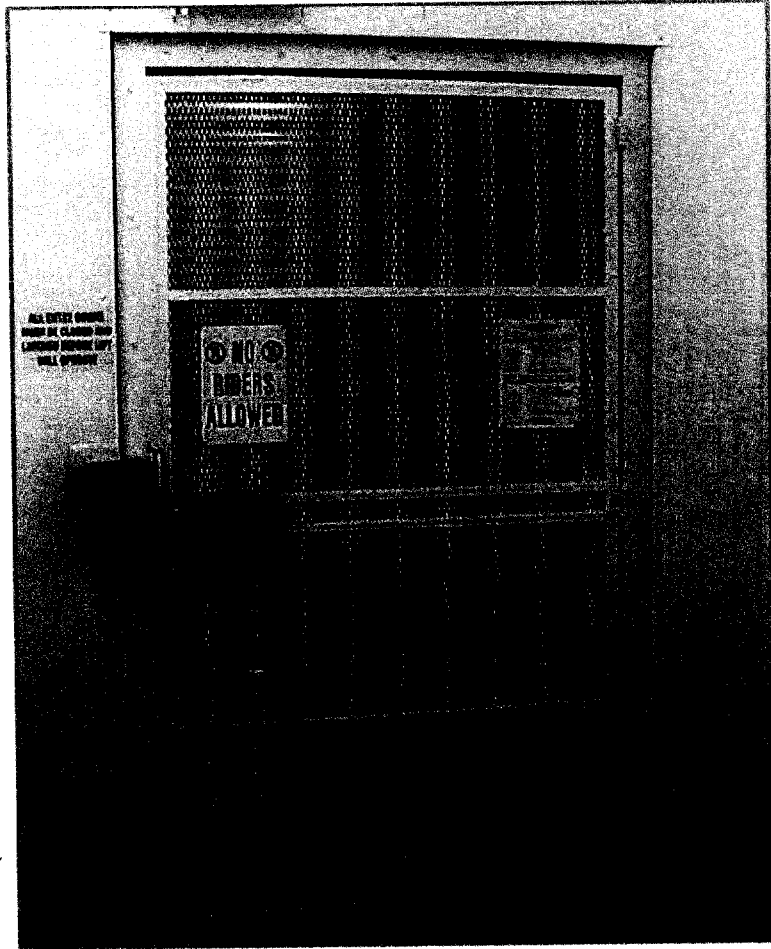
Shown with customer installed intercom system.



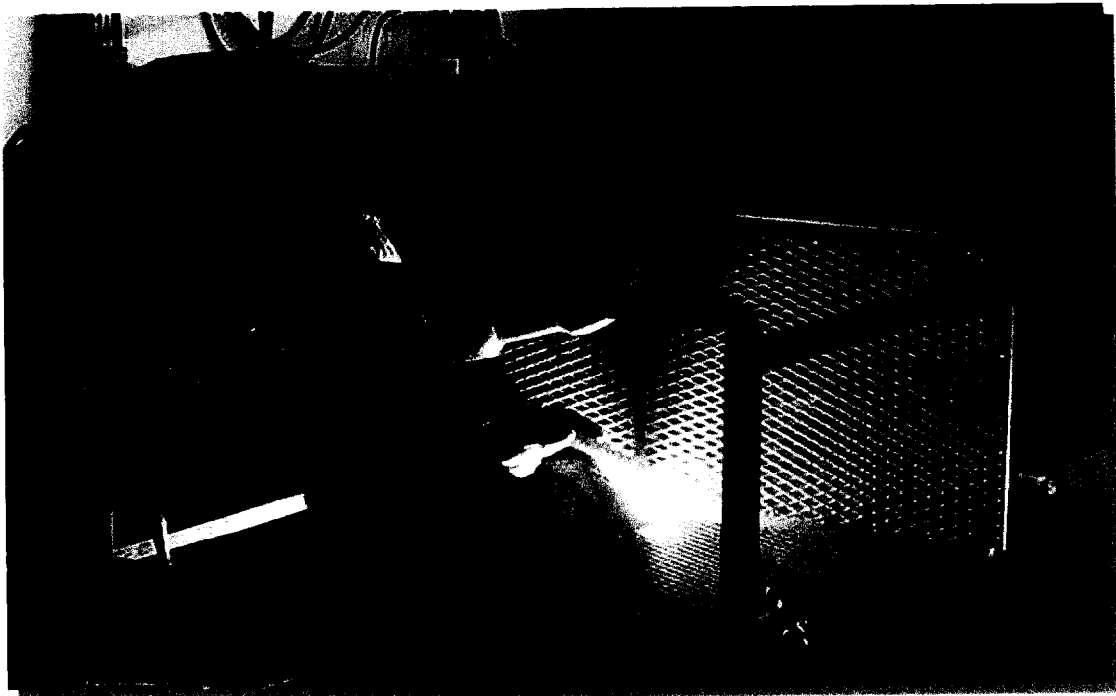
Section view of our roof mounted panels and our FRP cab wall panels.



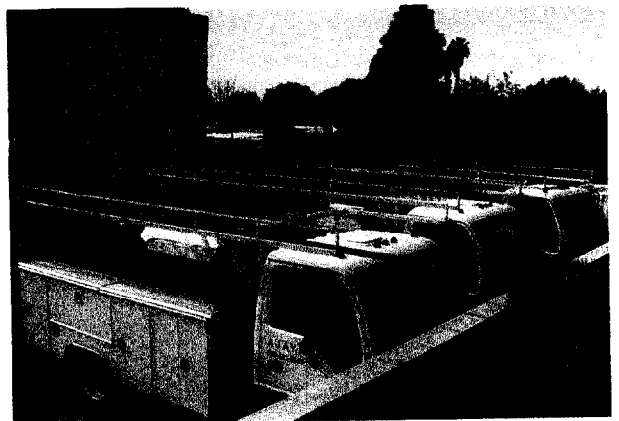
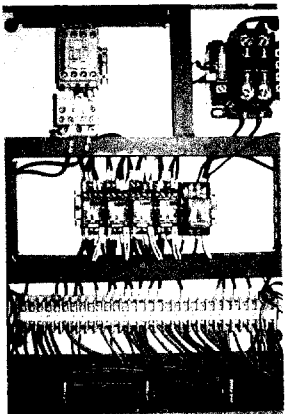
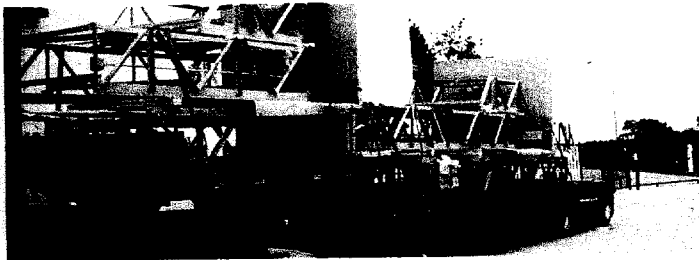
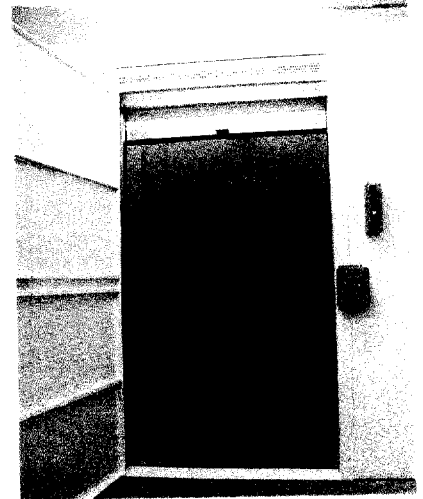
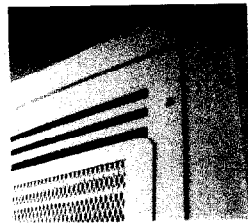
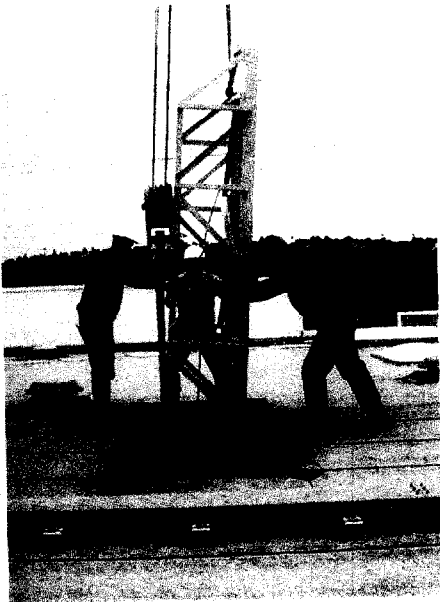
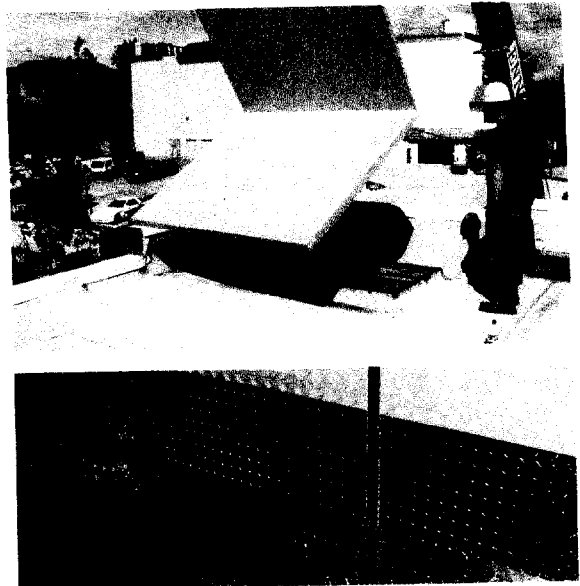
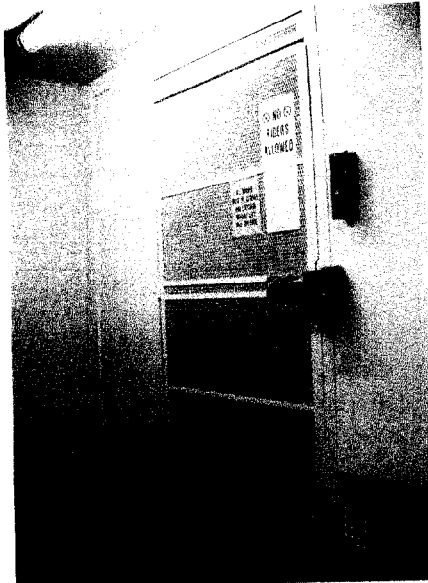
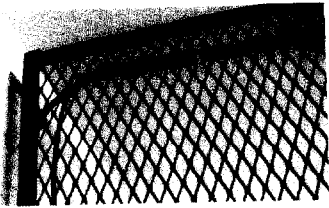
Our optional available approach ramps for surface mount applications.



Our optional available entry gate and structural steel bolt in place mounting frame.



View of our welding work station.



AN ECONOMICAL APPROACH FOR SAFELY MOVING YOUR CUSTOMERS MATERIALS VERTICALLY TO ANOTHER LEVEL.

Vertical Reciprocating Conveyors (VRCs) are very efficient for moving loads to and from other floors, mezzanines, lofts and basements. VRC storage lifts require no special concrete footings, and can be installed without costly and time-consuming building modifications. Our VRC storage lifts are free standing and require no special structural concrete supporting shaft ways for on-site assembly, extra deep concrete pits or major electrical service panel rework as elevators do.

"THERE IS NO EQUAL"

WHAT MAKES AJAY EQUIPMENT STAND OUT ?

- ◆ We cater to the mini/self storage industry, making changes that work better for you.
- ◆ Nationwide sales and installation of VRC storage lifts by AJAY Equipment, providing 100% turnkey installation, by our own crew. This enables you, our customer, to benefit from the many years of experience we have, within the storage industry.
- ◆ We have extensive experience in retrofitting VRC storage lifts into newer, as well as older, existing storage facilities and vast installation experience with new locations.
- ◆ We are the only VRC company that regularly attends the storage industry trade shows, and we are well known by the builders and architects within the storage industry.

EXCLUSIVE AJAY VRC QUALITY FEATURES

Exclusive Indicator Check Light System--Automatically checks, and then provides a visual light indicating that the entry doors, roll-up-doors and solenoid slide bolt safety interlocks are all closed and properly latched for your safety, before the VRC storage lift will operate.

Door Safety Interlocks--Exclusive 4-way safety solenoid slide bolt interlock system, which provides the utmost entry door safety, for your VRC storage lift, and is supplied **solely by AJAY Equipment**.

Safe Low Voltage Controls--All operational controls and all other related control components are safe low voltage. At 24 volts, this alleviates the potential for serious injury due to a possible electrical short.

Carrier/Platform Mounted F.R.P. Enclosure--This unique design is another AJAY exclusive. Our F.R.P. (fiberglass-reinforced panel) carrier/platform mounted enclosure is extremely durable, dent and scratch resistant, looks great aesthetically, and is entirely finished framed in heavy gauge anodized aluminum. The floor is finished with "nonskid polished aluminum safety floor plate".

Exclusive Extra-Rigid Truss Design Mast--Angled cross members adds strength and rigidity to minimize twisting, deflection and to provide you with the strongest free standing VRC STORAGE LIFTS AVAILABLE.

Factory Tested--Each VRC is completely welded, assembled, and tested at the factory prior to shipment.

Warranty--Full one-year warranty, parts and labor is standard. A two-year parts warranty is provided when AJAY Equipment installs and maintains the VRC storage lift.

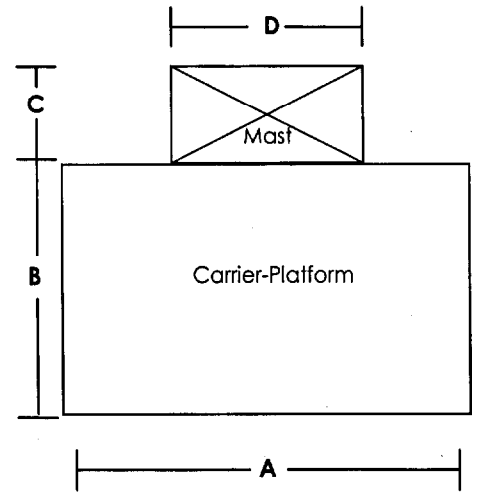
VRC Lift Order Specifications:

A. Carrier/Platform Size Platform Length (B) +2" Platform Width (A) +2"

Determine size based on maximum load dimensions. Allow for foreseeable future load requirements and for adequate maneuvering space.
 *Most popular sizes for storage facilities.

36"	42"
48"	54"
*60"	66"
*72"	78"
84"	

36"	42"
48"	54"
60"	66"
72"	78"
*84"	90"
*96"	102"
108"	



Notes regarding platform dimensions: The +2" as mentioned above for platform length and width allows for 1" of vertical unobstructed operating clearance on all sides of the platform.

Notes about mast dimensions: C will always be 26' + 6" for our standard mast, the 6" allows for installation and future servicing. D varies with platform width.

Carrier/platform size, capacity, and quantity of VRC storage lifts are best determined by second floor square footage, length of building, and by size or unit mix of storage units on the upper level.

B. Vertical Travel

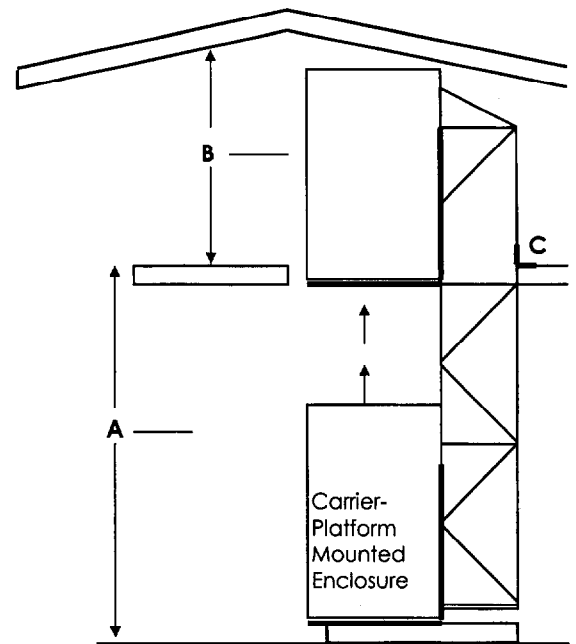
Distance from lowest load or unload level to highest load or unload level. Also round up to the next foot and add a 3" safety cushion.

6'	11'	16'	21'
7'	12'	17'	22'
8'	13'	18'	23'
9'	14'	19'	24'
10'	15'	20'	

Notes about travel dimensions:

The A dimension is taken from the finished floor first level to the finished floor second level. **Repeat this procedure for a 3 level application.**

The B dimension is taken from the lowest unobstructed point such as the roof joist (shown) to the finished second level floor. Be sure to also consider sprinkler pipes and overhead lights, etc.



The mast is always tied off at the second floor opening as indicated by the letter C. The framed opening must be adequately reinforced, at the mast tie off point.

C. Carrier/Platform

Determine capacity desired based on heaviest load, plus load handling equipment.
*Most popular capacity.

Capacity

3,000 lbs.	3,000 lbs.
4,000 lbs.	4,000 lbs.

D. Speed/Power Unit

Motor Specifications:
3.2 HP 230/1/60
3.2 HP 208/230/460/3/60

Standard Rise Speed In Feet Per Minute (Faster Speeds are Available)

Capacity lbs.
Feet per minute
Feet per minute

1,000	2,000	3,000	4,000
21	21	21	15
21	21	21	15

Single or three phase power is available as a standard feature, at no additional charge. Either power unit requires a 30 amp fused safety disconnect service, supplied by others.

E. Traffic Pattern

Determine the best and most efficient loading and unloading traffic pattern for your storage facility.

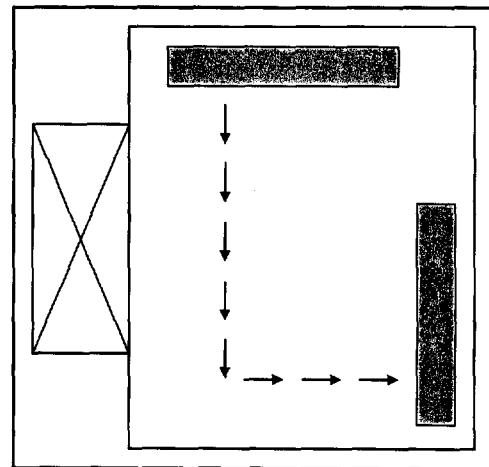
C Pattern: You enter and exit from the same side of the carrier platform, on each level.

Z Pattern: You enter and exit from opposite sides of the carrier platform, on each level.

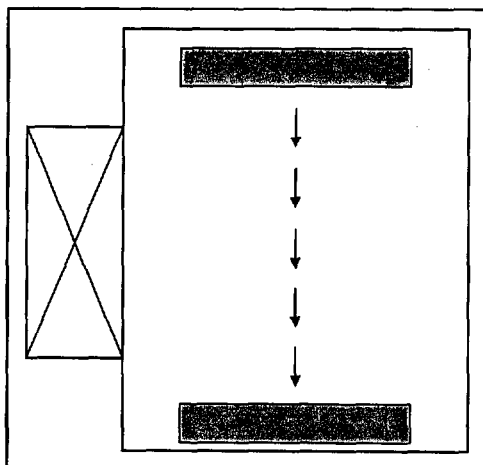
RA Pattern: You enter and exit the carrier platform from a right angle, on each level. Note that with this layout the roll up doors are offset, on each side, of the carrier platform, and are not centered to the carrier platform, as with the C or Z pattern.

Choose Pattern: [] C [] Z [] RA

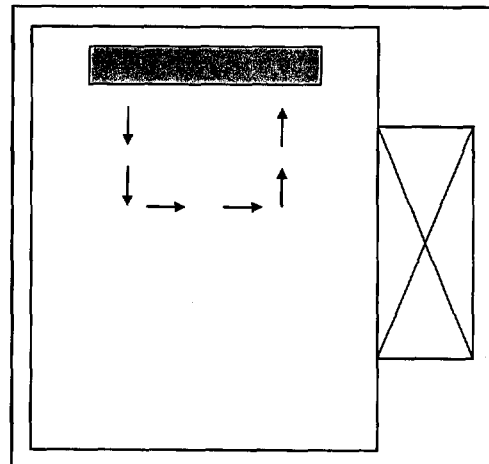
RA Traffic Pattern



Z Traffic Pattern



C Traffic Pattern



NOTES: Add maneuvering space needed for VRC access by other loading or unloading equipment, such as 2-wheel hand truck, 4-wheel platform truck or pallet jack, also swing clearance for hinged entry doors or hinged entry gates. Floor space is determined by carrier/platform size. Please call **AJAY Equipment** for any assistance you may need regarding your VRC storage lift requirements at **1-800-521-AJAY (2529)**.

Doors/Gates, Interlocks And Landing Enclosures:

ASME/ANSI B20.1--Requires that "the conveyor shall be guarded to prevent injury from inadvertent physical contact," and "the conveyor housing shall be equipped with doors, gates or an equivalent device at each manual loading and unloading station, interlocked so that they can be opened only when the carrier/platform is stopped at that level and the carrier/platform cannot be moved until they are closed."

Doors/Gates Interlocks And Landing Enclosures--If your existing building or storage unit walls are not surrounding the placement of the VRC storage lift, as a then required option, doors/gates, and welded safety steel panel landing enclosures are available for each level. Doors/gates may be of single or double configuration.

In order to protect the integrity of the required safety interlock system, the door or gate and its supporting frame must have the structural strength and rigidity to ensure proper alignment of the safety interlock mechanism. For this reason, all vertical conveyor storage lifts must be equipped with doors or gates and interlocks built in conformance with ASME/ANSI specifications. VRC storage lifts must be installed to comply with all ANSI B20.1, ASME, and OSHA codes.

Accessory Equipment:

RAM Stop Assembly With Pressure Switch--For positive carrier/platform stability while loading or unloading in the raised position. (Included on all lifts with over 10' of travel).

Stabilization Chains--For use on oversize carrier/platforms of 7'6" and 8' wide. Stabilizes carrier/platform while loading/unloading at the upper level.

Larger Size Power Units--For faster rise speeds.

Mini Mast--For sites with very limited space to allow for maximum size carrier/platform.

Carrier/Platform-Mounted Safety Rails--48" high standard safety rails with snap chains, safety rails are permanently attached, snap chains must be used on the open ends of the carrier/platform.

Carrier/Platform-Mounted Welded Steel Side Safety Panels--Snap chains must be used on open ends of carrier/platform.

Loading Approach Ramps--Custom fabricated in grades to meet customer requirements.

Modified Designs--In addition to the items listed here, AJAY can modify designs or add additional items to meet your specific application requirements.

Architectural And Construction Specifications For Hydraulic VRC Storage Lifts:

Mast/Frame--Lower base to be constructed of fully electrically welded structural steel of substantial dimension maximum safety stops to prevent carrier/platform over-travel.

Carrier/Platform--Construction of fully electrically welded structural steel of substantial dimension to accommodate rated load. Frame to be one-quarter inch (1/4") wall steel tubing and reinforced with steel cross members. Carrier/platform material is smooth, hot rolled steel plate. Seventy-two inch (72") high, back plate of minimum ten (10)-gauge smooth hot rolled steel electrically welded to three-inch (3") channel frame. Four (4) side deflection rollers (sealed bearing mounted), one on each outside corner of back plate, to resist carrier/platform tilting, should load be off-center. Carrier/platform to travel on four (4) tapered guide wheels, machined for smooth travel, within upright channels. Each roller to have two (2) replaceable bearings and are mounted on a smooth machined steel axle assembly.

Posi-Stop Carrier/Platform Brake--Two (2) complete assemblies, each consisting to accommodate the rated capacity. Base legs to be of capped structural steel tubing having minimum of one-quarter inch (1/4") wall thickness, with four (4) anchor plates for lagging to floor. Upright channels to be of minimum four inch (4") channel (7.25#) welded to angled cross members to form a truss to increase strength and to resist frame twisting. All corners are to be rounded to eliminate sharp edges. Upper frame to match lower frame, having bolted splice point to allow proper alignment and smooth travel of carrier/platform. Two (2) fixed of heat-treated, hardened steel cams mounted on lubricated bearings to prevent freezing. Cams are actuated via torsion springs to prevent carrier/platform free fall should chain slacken or break.

Electro/Hydraulic Power Unit--Standard 3.2 HP power unit features 3450-rpm TENV motor directly coupled to 2.8 gpm hydraulic gear pump. Pump has integral check valve, relief valve, and 24 volt lowering valve built-in. Pump relieves back to tank and not within pump cavity. Motor/pump combination is neatly mounted on a 5-, 10-, or 15- gallon oversize reservoir with removable suction line filter and sight gauge. Entire power unit is prewired and can be bolted within the mast structure or can be removed and used as an external power unit mounted in a separate adjacent equipment room where required. Hydraulic oil is supplied and shipped loose in special containers. Optional 5.0 HP power unit is similar to above but features a 1750-rpm continuous-duty TEFC motor, coupling with guard, and 5.3 gpm hydraulic gear pump. All else is the same as above, except the check valve, relief valve, lowering solenoid, and emergency lowering valve, which are separate items not built-in to the hydraulic pump.

Hydraulic Cylinder--Single-acting design, casting of DOM tubing, inner rod of chrome-plated steel, with adequately spaced rod stabilizing rings and nonmetallic wear ring. Gland coupling shall have bleed port allowing expulsion of air from cylinder and shall be machined to accommodate gland nut. Gland nut to be easily removed for maintenance of packing. Gland nut shall have external threads with internal sealing and wiping rings. Design of cylinder shall allow easy removal of rod by removal of gland nut, without damage to cylinder. Chain anchor bolts shall have two (2) lock nuts and a lock pin. Chain pressure shall be balanced with separate chain rollers having two (2) sealed bearings each by means of an equalizing head plate. Roller chain shall have a minimum safety factor of at least four to one (4:1). Adjustable flow control at base of cylinder to facilitate control of lowering speed. Hydraulic velocity safety fuse valves are included.

Carrier/Platform Mounted Paneled Enclosure--Paneled enclosure on the carrier/platform will be constructed from F.R.P., (fiberglass-reinforced panels) almond in color, to the interior side. The F.R.P. is sandwiched with one layer of polystyrene foam and two layers of hardened high-density hardboard, which is laminated with four mil almond vinyl to the exterior side. Panels and door openings are finished framed in heavy gauge anodized aluminum. Roll up entry doors will be 48" wide x 84" high and color coordinated with your doors.

Standard Electrical/Control Specifications--Primary voltage: (Specify) single phase, 115/230/1/60, or three phase 208/230/460/3/60. Control voltage: 24/1/60. Motor starter/transformer combination in NEMA 1 enclosure is included and is part of the removable power unit assembly. All wiring is done to National Electric Codes (NEC) standards. All 24 volt controls (push buttons, limit switches, slide latch solenoid safety interlocks, etc.) are included as standard, but various layout options are available to meet your application requirements.

Electrical/Controls Features--Standard controls are NEMA 1 Interior mount or NEMA 12 Exterior mount, three or four button, minimum-maintained contact (automatic) call/send push buttons with red emergency stop button. Mounting must not be within reach of carrier/platform per ANSI B20.1. Main control panel in a NEMA 1 enclosure includes motor starter, control transformer, relay logic, heaters, terminal strip and fuse block, all factory wired in accordance with NEC. Upper and lower level NEMA 12 limit switches mounted on mast, with adjustable strikers, in unistrut, for a wide range of adjustment. Limit switches will be wired to junction box on frame that will then be wired in conduit to main junction box at base of lift at time of installation.

Factory Tested--Each hydraulic VRC model to be manufactured, assembled, and fully tested under full design load capacity. Each VRC to be furnished by the manufacturer with a complete detailed, operation-parts manual.

Mechanical Options--Ram Stop Assembly with Pressure Switch, an adjustable structure that allows the piston ram to deadhead against it at the proper level and system pressure is to be maintained.

Safety Features--Three (3) maximum travel safety stops to limit carrier/platform travel, two (2) lubricated, spring-loaded Posi-Stop carrier/platform brake devices, rounded corners, overload safety relief valves, adjustable down-speed control, check valve, chain adjusters with lock pins, velocity safety fuse valve. **Indicator light system, automatically checks, and then provides a visual light indicating that the entry doors, roll-up-doors and solenoid slide bolt safety interlocks are all closed and properly latched, for your added safety, before the VRC storage lift will operate.**

In the interest of continuous product improvement, research, and safety, all specifications contained herein are subject to change without prior notice 08-27-01

For further product information about our vertical reciprocating conveyors, VRCs, or design layout help for your new or existing storage facility, please contact: **AJAY EQUIPMENT at 1-800-521-AJAY (2529) or Fax # (714)-792-0858. Send all inquiries to 712 S. Richfield Road, Placentia, CA. 92870-6760.**

www.ajaystoragelifts.com

Serving The Mini/Self Storage Industry Since 1983

GENERAL DESCRIPTION

Quantity: (1)

Mast, carriage & platform: All Structural steel and plate electric welded construction.

Load capacity: 2,000 lb uniform load.

Platform lifting speed: 21 fpm (fixed).

Platform lowering speed: 0 - 20 fpm (adjustable).

Drive system: Electrical/hydraulic using a 3.2 hp Tenv motor operated at 230 volts, 1 phase & 60 hertz.
Motor is direct coupled to a hydraulic pump.

Electrical: Adjustable upper & lower travel limit switches wired to a control panel.

All pushbutton stations and electromechanical slide bolt interlocks to be supplied, installed & wired by AJAY.

All controls to operate on a 24 volt circuit.

All electrical enclosures to be rated NEMA 1 or NEMA 12.

- Includes:
1. Maximum overtravel stops.
 2. Non-freeze falling platform brake assembly.
 3. Side platform deflection control.
 4. Overload hydraulic relief valve.
 5. Emergency platform lowering valve.
 6. Factory wiring & testing.
 7. Installation & operation instructions.
 8. Warranty of two (2) years, parts & labor when installed by AJAY.

Finish: Beige machinery enamel.

SAFETY REQUIREMENT:

Per ANSI code B20.1, this VRC requires enclosures and interlocked gate at each level.

PERSONNEL PROHIBITED:

This VRC is designed solely for the purpose of material movement and is not intended for personnel.

MAINTENANCE:

To extend the life of this VRC, periodic maintenance and safety inspections must be performed by qualified personnel as outlined in the operation instruction manual.

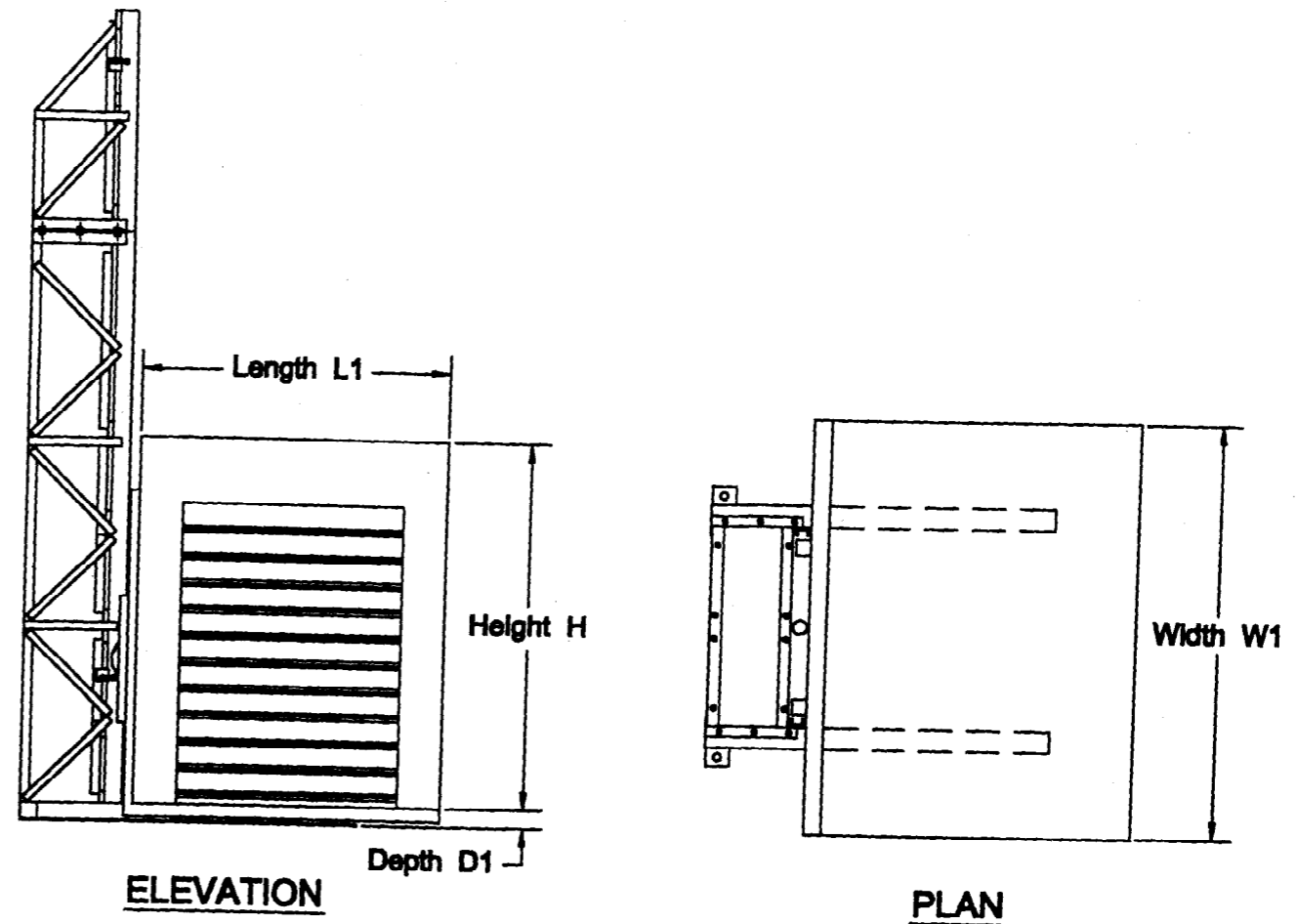


Table 1 – Dimensions for VRC Carrier Platform and FRP Cab

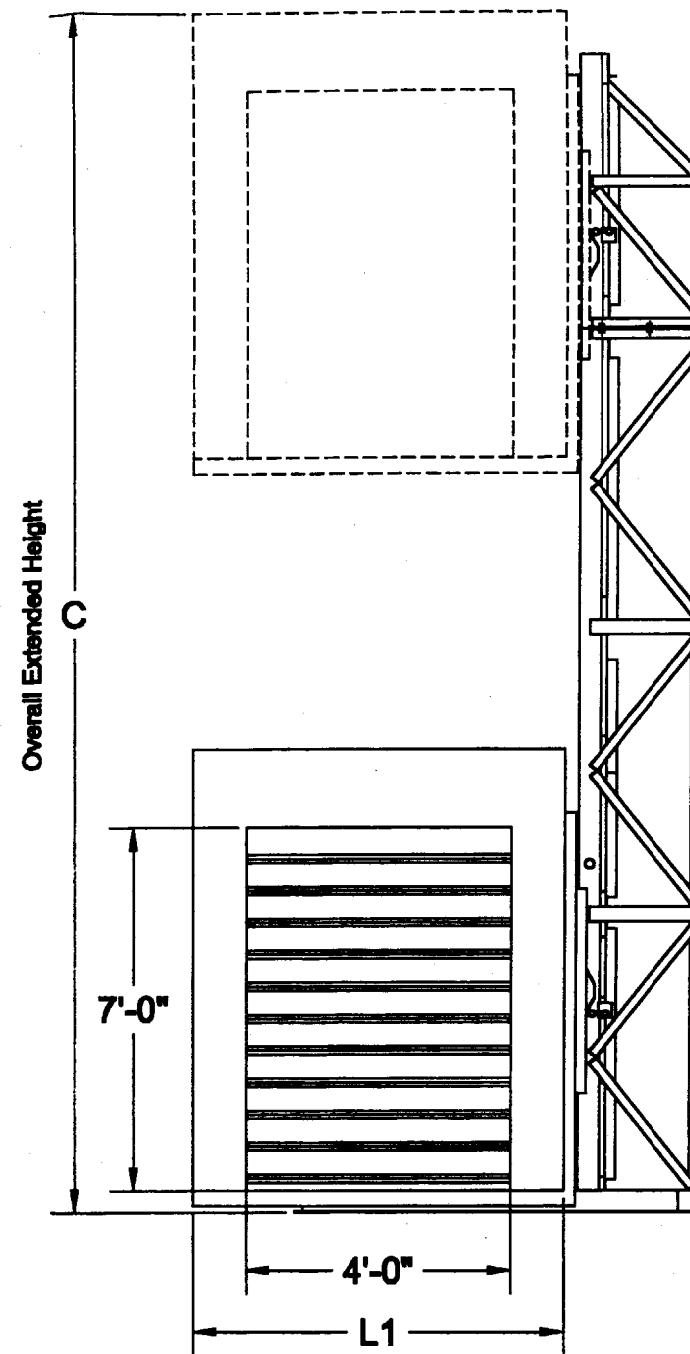
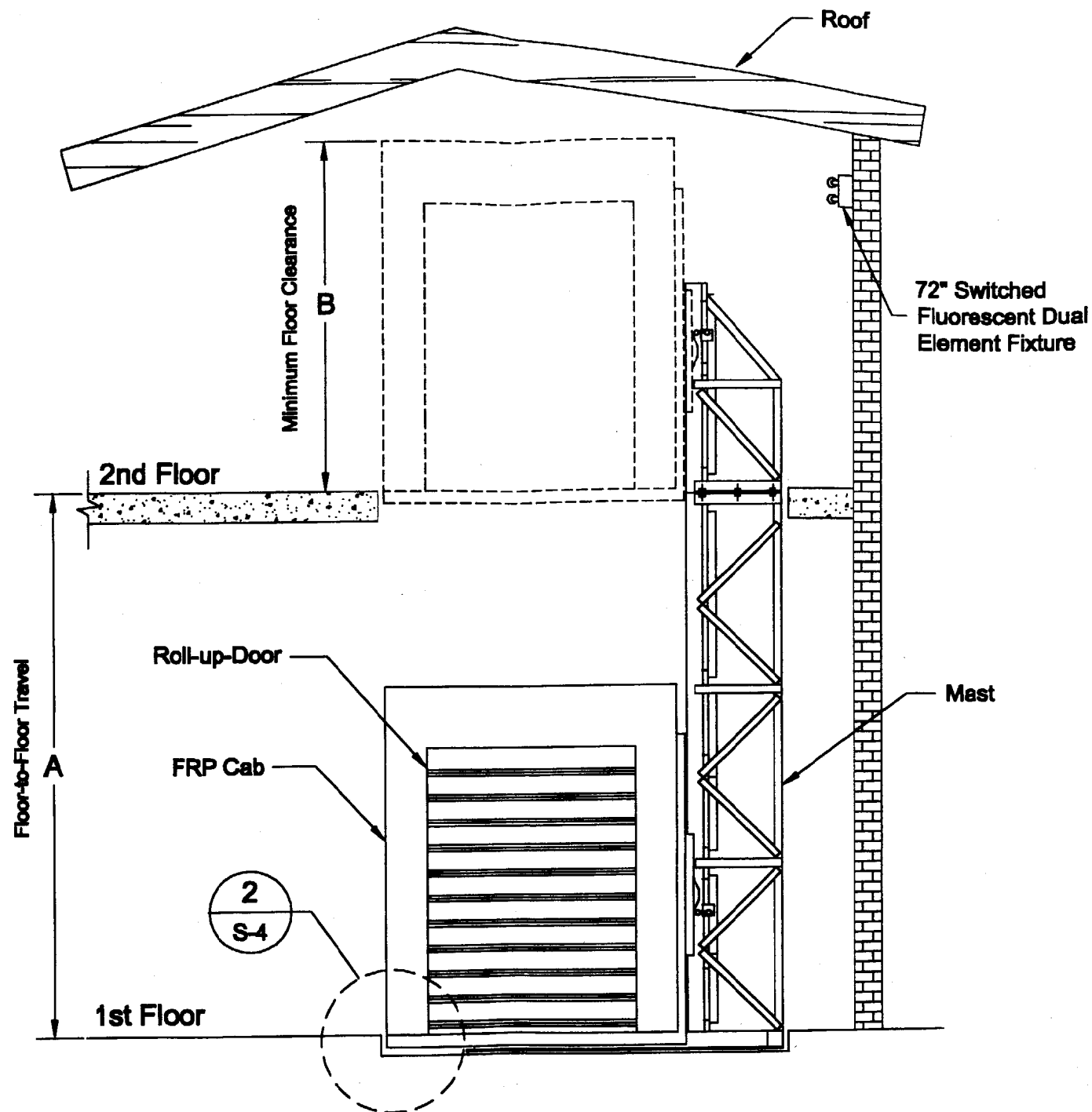
Carrier Platform Dimensions	Carrier Platform Length L1	Carrier Platform Width W1	Carrier Platform Depth D1	FRP Cab Height H
6' x 6'	6'-0"	6'-0"	4.5"	8'-0"
6' x 7'	6'-0"	7'-0"	4.5"	8'-0"
6' x 8'	6'-0"	8'-0"	4.5"	8'-0"
6' x 9'	6'-0"	9'-0"	4.5"	8'-0"
Other: _____				

AJAY Equipment Corporation

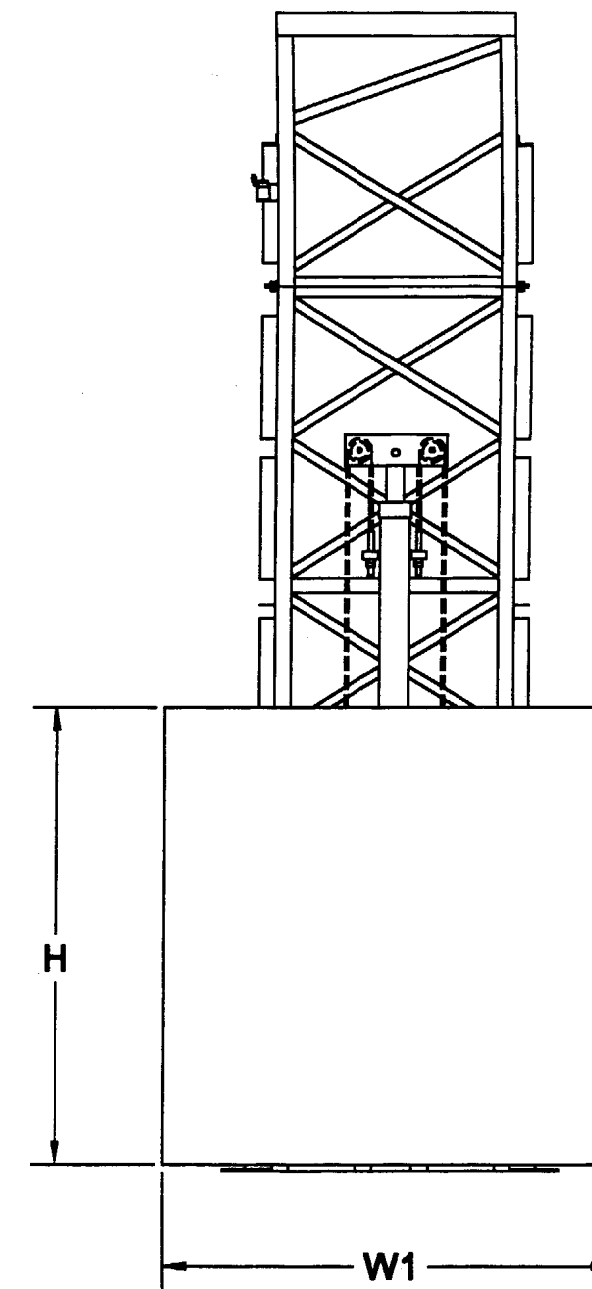
712 S. Richfield Road, Placentia, CA 92870-6760
Phone: (800) 521-2529 Fax: (714) 792-0858

VERTICAL RECIPROCATING CONVEYOR (VRC)

Model AJ10000



SIDE VIEW



FRONT VIEW

Note: Refer to Table 1 in S-1 for length L1, width W1 and height H.

A = Floor-to-Floor Travel = 10 ft 0 in
 B = 2nd Floor-to-Ceiling Height = 8 ft 2 in
 C = Overall Extended Height = 18 ft 2 in

Roll-up-Door Color: _____

Notes:

1. There should be a 2" minimum clearance between the top of FRP cab and ceiling when VRC is fully extended.
2. Fluorescent fixture and switch to be installed and wired by building contractor.

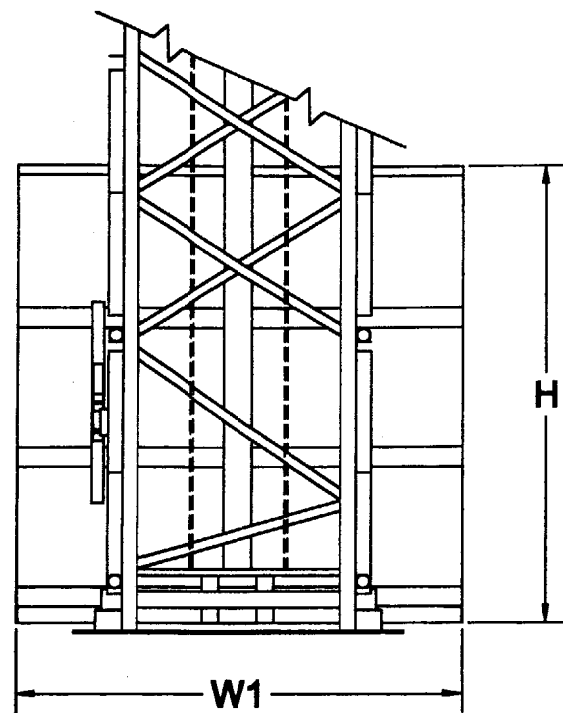
AJAY Equipment Corporation

712 S. Richfield Road, Placentia, CA 92870-6760
 Phone: (800) 521-2529 Fax: (714) 792-0858

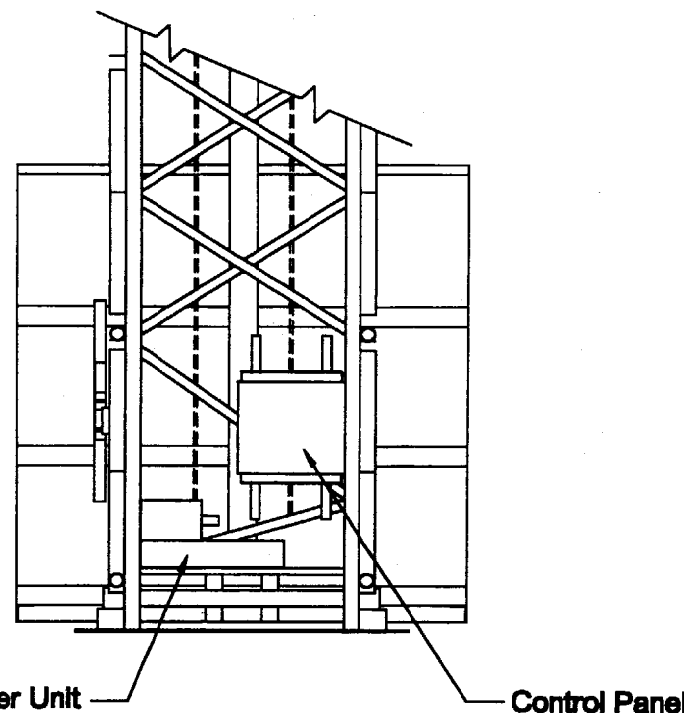
VERTICAL RECIPROCATING CONVEYOR (VRC)

Model AH-300S with FRP Cab Carrier Platform N.T.S. 3-4-98

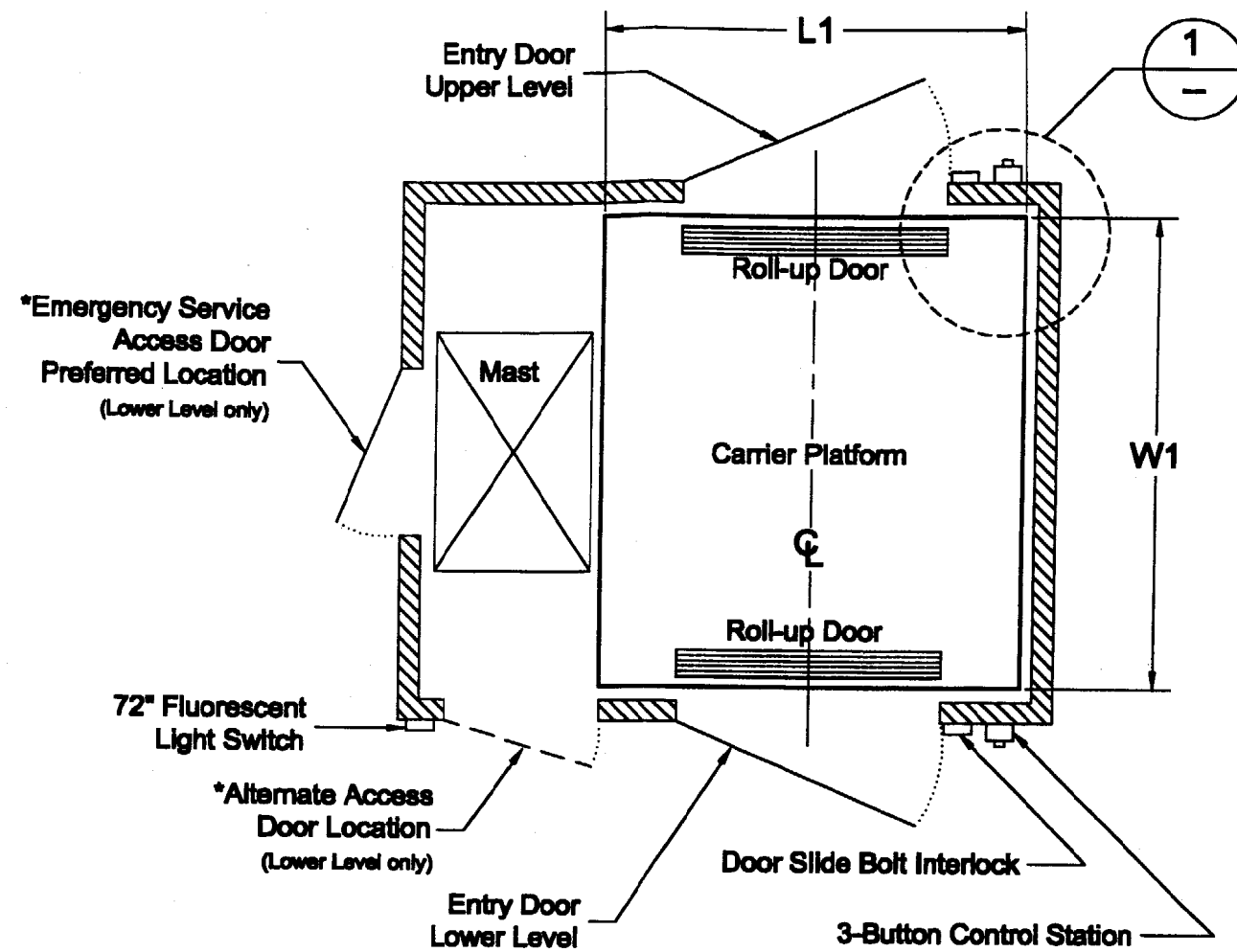
S-2



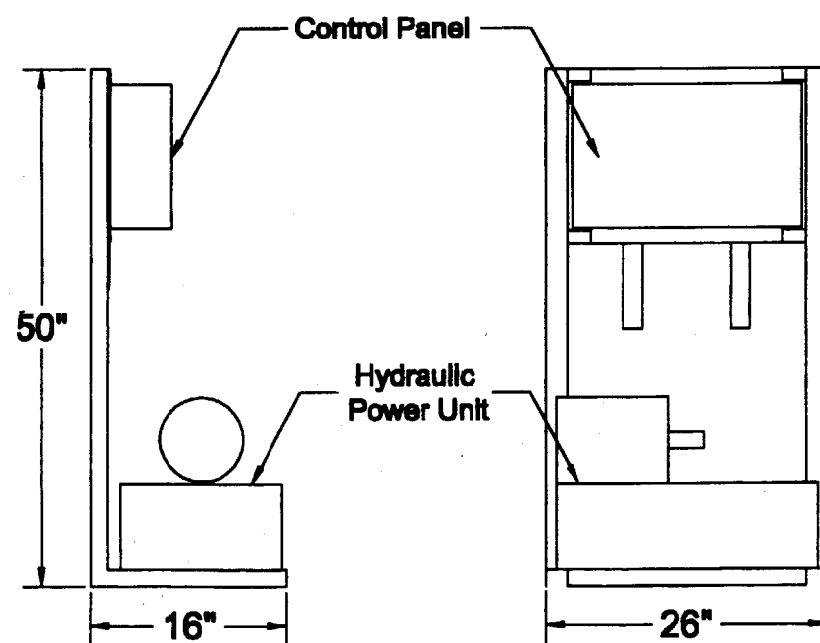
**REAR VIEW
WITHOUT POWER UNIT**



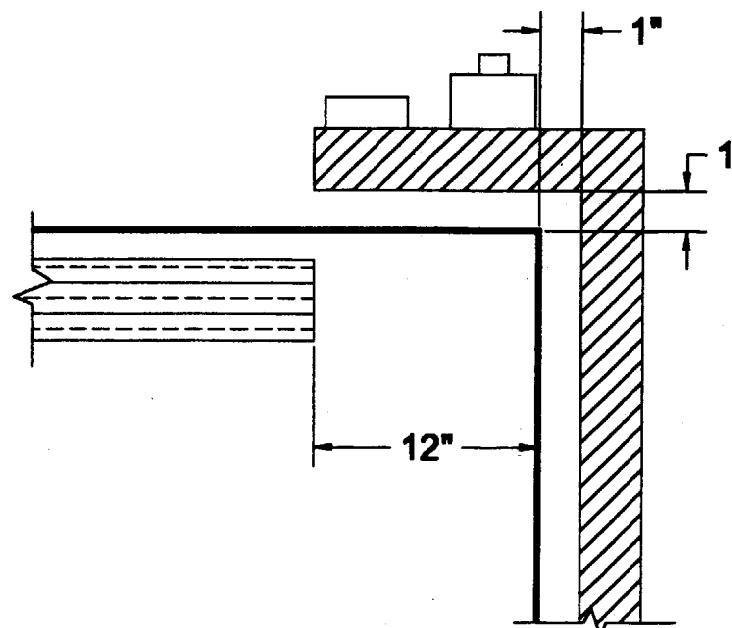
**REAR VIEW
WITH POWER UNIT**



TOP VIEW OF CAB – TYPICAL LAYOUT



EXTERNAL POWER UNIT



Note: 1" clearance required for all 3 sides closest to lift.

1

1. The hinged entry doors on each level must be centered to the lift carrier platform roll-up doors and not the wall opening.
2. Service door size is 2'-6" by 6'-8". Entry doors are 4'-0" by 7'-0".
3. Walls/partitions and all hinged entry doors are by others.

*An equipment room is strongly recommended, and is now mandatory in some states.

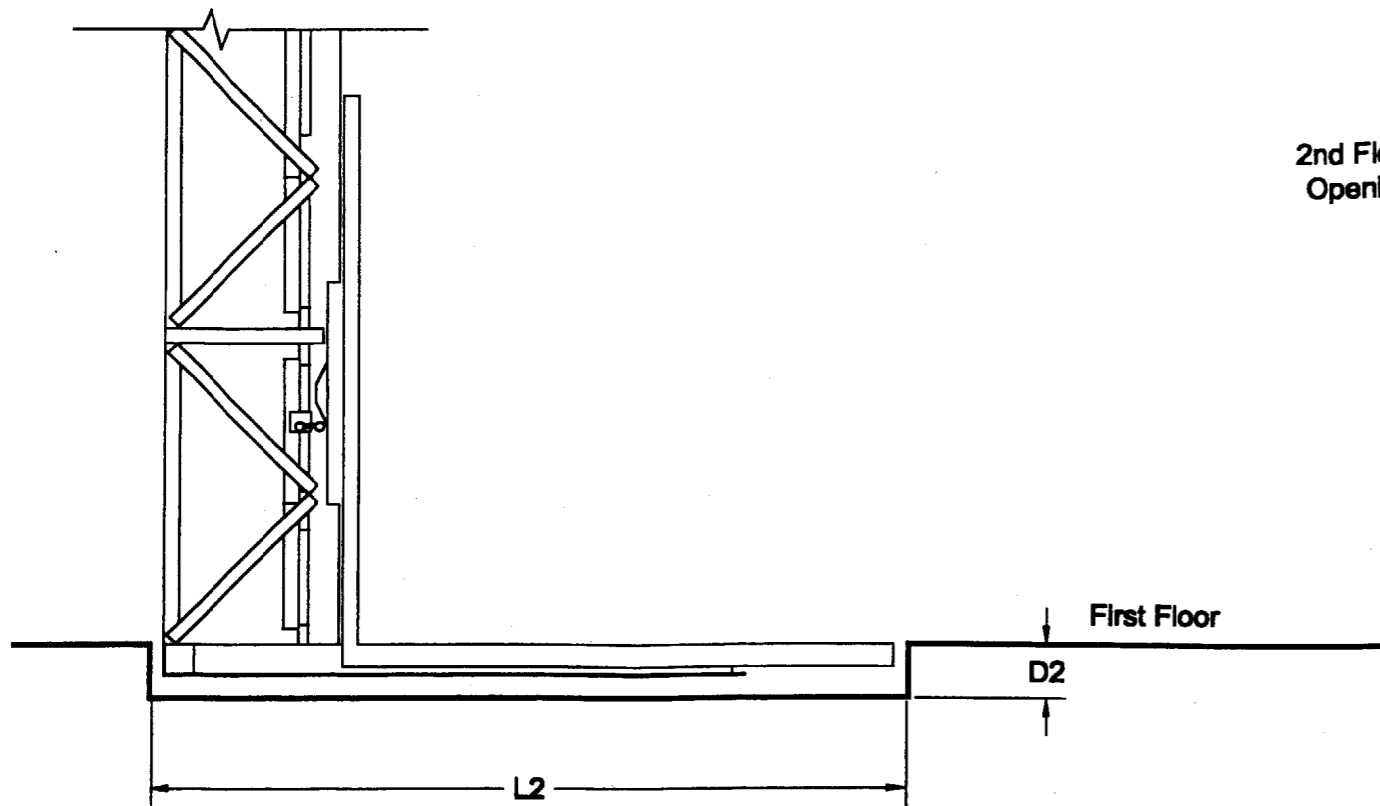
AJAY Equipment Corporation

712 S. Richfield Road, Placentia, CA 92870-6760
 Phone: (800) 521-2529 Fax: (714) 792-0858

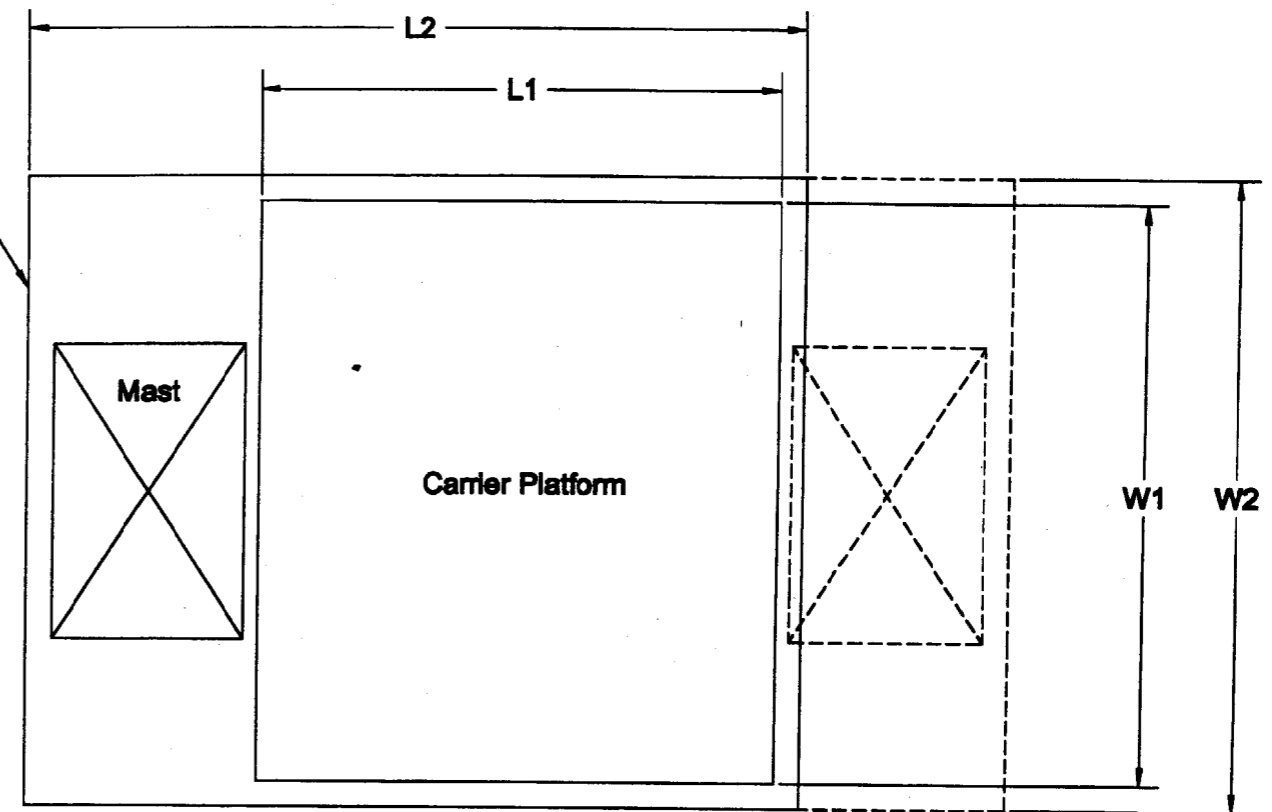
VERTICAL RECIPROCATING CONVEYOR (VRC)

Model AH-300S with FRP Cab Carrier Platform N.T.S. 3-4-98

S-3



RECESSED SLAB DETAIL



TOP VIEW OF LIFT FROM SECOND FLOOR

1. Recessed slab dimensions: length L2, width W2", and depth D2.
2. Second floor opening length and width are same as above right (Detail 3).
3. Slab thickness should be 5" to 6" reinforced with #10 remesh or #4 rebar on 18" centers.

Note: The mast could be placed on opposite side as shown by dotted lines.

2

Table 2 – Dimensions for Recessed Slab & 2nd Floor Opening

Carrier Platform Dimensions	Opening Length L2	Opening Width W2	Opening Depth D2
6' x 6'	9'-0"	6'-2"	5½"
6' x 7'	9'-0"	7'-2"	5½"
6' x 8'	9'-0"	8'-2"	5½"
6' x 9'	9'-0"	9'-2"	5½"
Other: _____			

3

AJAY Equipment Corporation

712 S. Richfield Road, Placentia, CA 92870-6760
 Phone: (800) 521-2529 Fax: (714) 792-0858

VERTICAL RECIPROCATING CONVEYOR (VRC)

Model AH-300S with FRP Cab Carrier Platform N.T.S. 1-23-98

S-4