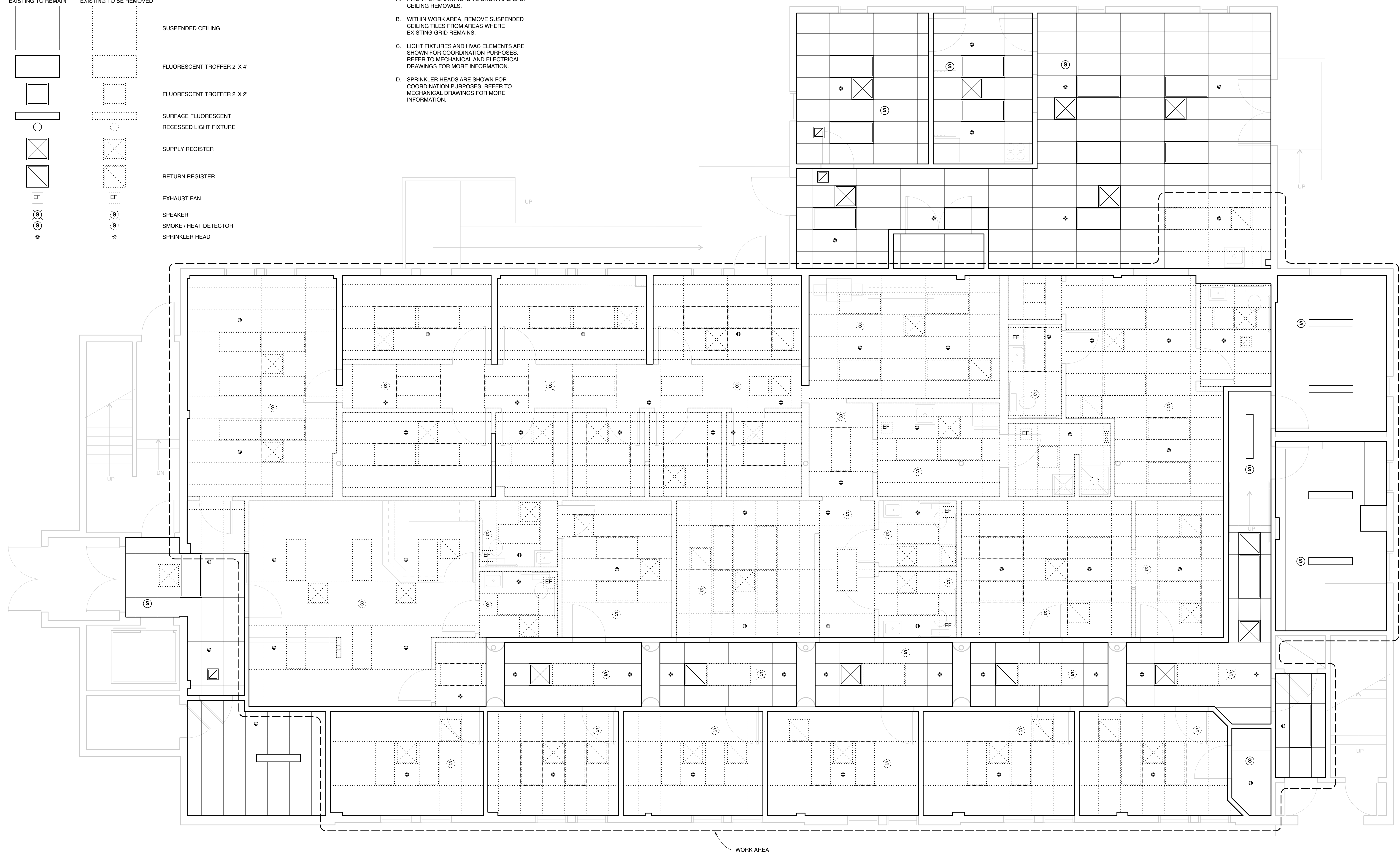
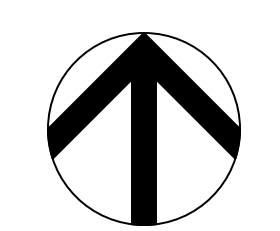


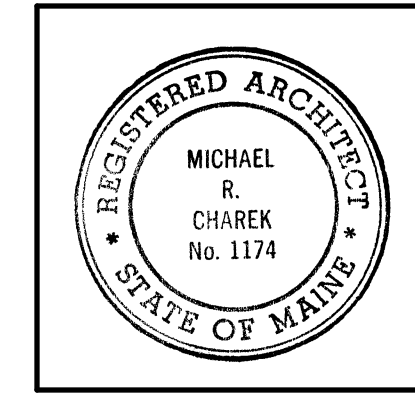
- CEILING DEMO PLAN GENERAL NOTES**
- INTENT OF DRAWING IS TO SHOW AREAS OF CEILING REMOVALS.
  - WITHIN WORK AREA, REMOVE SUSPENDED CEILING TILES FROM AREAS WHERE EXISTING GRID REMAINS.
  - LIGHT FIXTURES AND HVAC ELEMENTS ARE SHOWN FOR COORDINATION PURPOSES. REFER TO MECHANICAL AND ELECTRICAL DRAWINGS FOR MORE INFORMATION.
  - SPRINKLER HEADS ARE SHOWN FOR COORDINATION PURPOSES. REFER TO MECHANICAL DRAWINGS FOR MORE INFORMATION.



**1 CEILING DEMOLITION PLAN**  
 SCALE: 1/4" = 1'-0"  
 1' 2' 4' 8'



**Michael Charek Architects**  
 25 Hartley Street  
 Portland, Maine 04103  
 (207) 761-0556



**Spurwink Bishop Street**  
 17 Bishop Street  
 Portland, ME 04103

**Title**  
 CEILING DEMOLITION PLAN

**Scale:** 1/4" = 1'-0"

**Date:** 3/4/09

**Revisions**

**ISSUED FOR PERMIT**

**Sheet**

**D2**