

DOOR SCHEDULE															
NO.	DOOR TYPE	MAT.	FIN.	WIDTH	HEIGHT	THICK.	FRAME TYPE	MAT.	FIN.	HEAD	JAMB	SILL	HDWR.	FIRE RATING	NOTES
101	EXG	--	--	--	--	--	EXG	--	--				EXG		
102	EXG	--	--	--	--	--	EXG	--	--				EXG		
103	EXG	--	--	--	--	--	EXG	--	--				EXG		
104	EXG	--	--	--	--	--	EXG	--	--				EXG		
105	EXG	--	--	--	--	--	EXG	--	--				EXG		2
106	EXG	--	--	--	--	--	EXG	--	--				EXG		2
107	EXG	--	--	--	--	--	EXG	--	--				EXG		2
108	EXG	--	--	--	--	--	EXG	--	--				EXG		2
109	EXG	--	--	--	--	--	EXG	--	--				EXG		2
110	EXG	--	--	--	--	--	EXG	--	--				EXG		2
111	X08	WD-SC	NAT	3'-0"	6'-8"	1 3/4"	1	HM	PT				HW-1		1
112	EXG	--	--	--	--	--	EXG	--	--				EXG		
113	EXG	--	--	--	--	--	EXG	--	--				EXG		
114	EXG	--	--	--	--	--	EXG	--	--				EXG		
115	X03	WD-SC	NAT	3'-0"	6'-8"	1 3/4"	1	HM	PT				HW-2		1,2
116	X18	WD-SC	NAT	3'-0"	6'-8"	1 3/4"	1	HM	PT				HW-3		1,2,3
117	X17	WD-SC	NAT	3'-0"	6'-8"	1 3/4"	1	HM	PT				HW-4		1,3
118	C	WD-SC	NAT	3'-0"	6'-8"	1 3/4"	1	HM	PT				HW-5		
120	A	WD-SC	NAT	1'-8"	6'-8"	1 3/4"	1	HM	PT				HW-1		
122	X15	WD-SC	NAT	3'-0"	6'-8"	1 3/4"	1	HM	PT				HW-1		1,4
123	X16	WD-SC	NAT	3'-0"	6'-8"	1 3/4"	1	HM	PT				HW-3		1,3
124	X10	WD-SC	NAT	3'-0"	6'-8"	1 3/4"	1	HM	PT				HW-3		1,3
125	A	WD-SC	NAT	3'-0"	6'-8"	1 3/4"	1	HM	PT				HW-6		
126	A	WD-SC	NAT	3'-0"	6'-8"	1 3/4"	1	HM	PT				HW-6		
127	A	WD-SC	NAT	3'-0"	6'-8"	1 3/4"	1	HM	PT				HW-6		
128	A	WD-SC	NAT	3'-0"	6'-8"	1 3/4"	1	HM	PT				HW-6		
129	X20	WD-SC	NAT	3'-0"	6'-8"	1 3/4"	1	HM	PT				HW-4		1,3
130	X05	WD-SC	NAT	3'-0"	6'-8"	1 3/4"	1	HM	PT				HW-3		1,2,3
132	EXG	--	--	--	--	--	EXG	--	--				EXG		
133	EXG	--	--	--	--	--	EXG	--	--				EXG		
134	C	WD-SC	NAT	3'-0"	6'-8"	1 3/4"	1	HM	PT				HW-5		
136	X07	WD-SC	NAT	3'-0"	6'-8"	1 3/4"	1	HM	PT				HW-1		1,3
137	X19	WD-SC	NAT	3'-0"	6'-8"	1 3/4"	1	HM	PT				HW-3		1,2
138	X23	WD-SC	NAT	3'-0"	6'-8"	1 3/4"	1	HM	PT				HW-3		1,2
139	X22	WD-SC	NAT	3'-0"	6'-8"	1 3/4"	1	HM	PT				HW-3		1,2
140	X21	WD-SC	NAT	3'-0"	6'-8"	1 3/4"	1	HM	PT				HW-3		1,2
141	EXG	--	--	--	--	--	EXG	--	--				EXG		
142	EXG	--	--	--	--	--	EXG	--	--				EXG		
143	A	WD-SC	NAT	1'-8"	6'-8"	1 3/4"	1	HM	PT				HW-6		
144	EXG	--	--	--	--	--	EXG	--	--				EXG		
145	EXG	--	--	--	--	--	EXG	--	--				EXG		
146	EXG	--	--	--	--	--	EXG	--	--				EXG		
147	EXG	--	--	--	--	--	EXG	--	--				EXG		

MATERIAL/FINISH ABBREVIATIONS

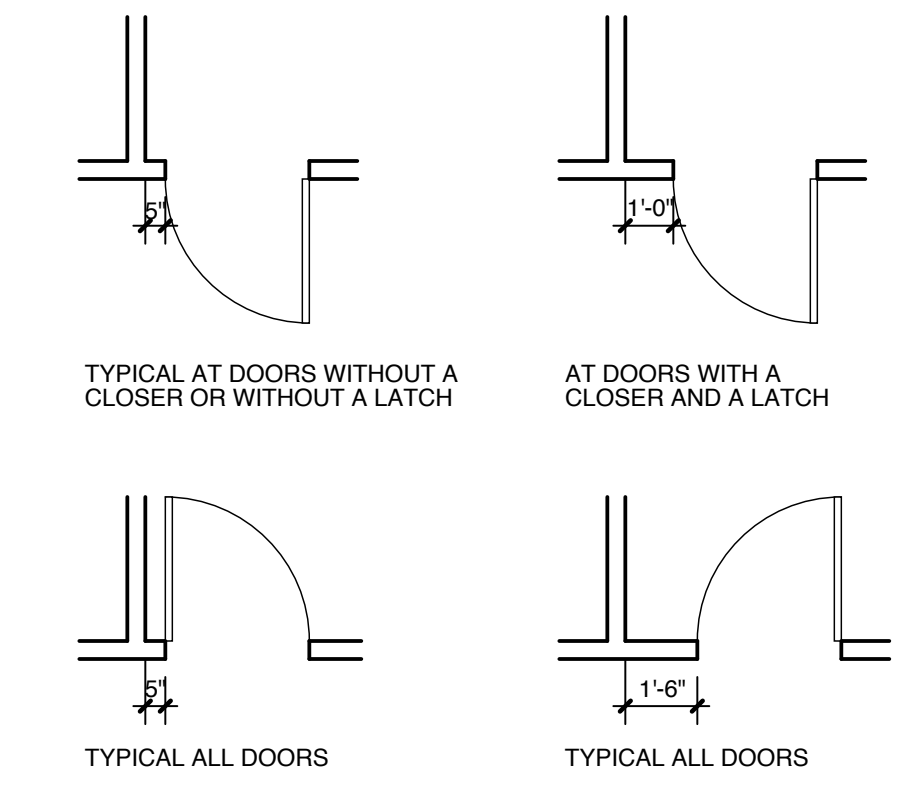
EXG EXISTING
 HM HOLLOW METAL
 NAT NATURAL FINISH
 PT PAINT
 SC SOLID CORE
 STL STEEL
 WD WOOD

NOTES

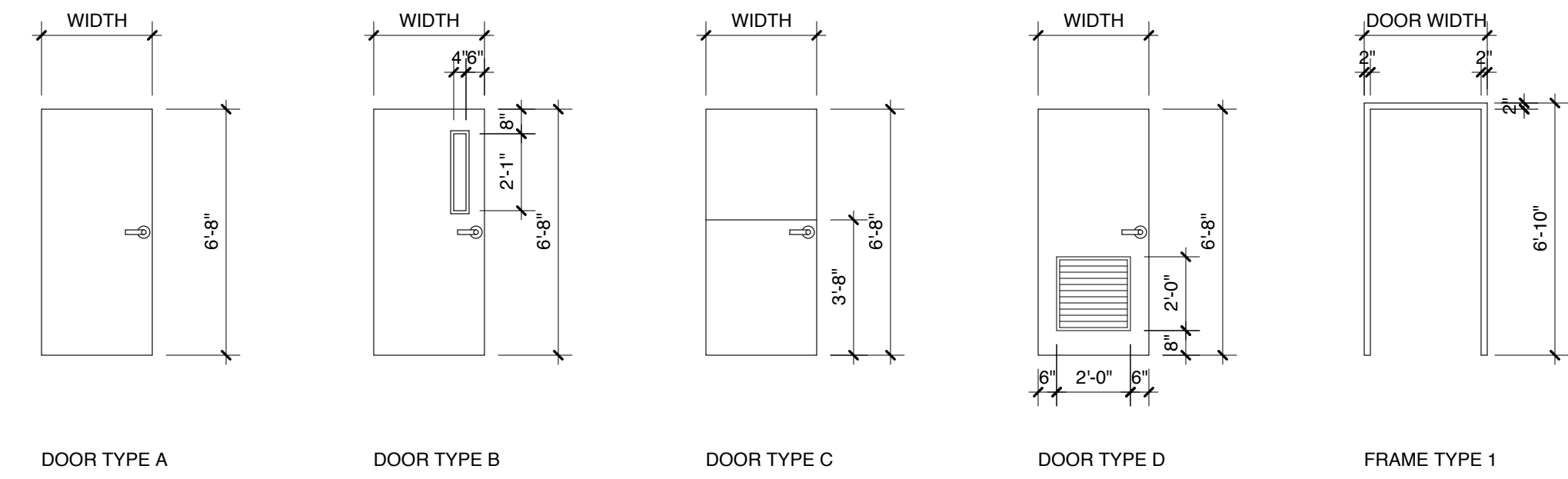
- USE EXISTING HARDWARE ON REUSED DOORS WHERE APPLICABLE.
- CHANGE LOCKSET TO PASSAGE SET.
- CUT IN VIEW LIGHT TO MATCH DOOR TYPE B
- CUT IN LOUVER TO MATCH DOOR TYPE D

HARDWARE

HW-1 3 HINGES
 1 LOCK - STORAGE FUNCTION
 HW-2 3 HINGES
 1 PASSAGE SET
 CLOSER
 HW-3 3 HINGES
 1 PASSAGE SET
 HW-4 3 HINGES
 1 LOCKSET
 1 CLOSER
 HW-5 4 HINGES
 1 LOCKSET
 1 DUTCH DOOR BOLT
 HW-6 3 HINGES
 1 PRIVACY SET



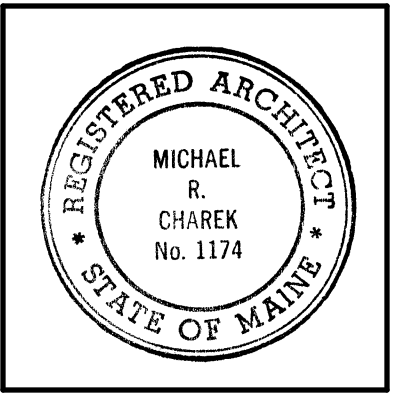
1 TYPICAL DOOR JAMB CLEARANCES
 SCALE: 1/4" = 1'-0"
 1' 2' 4' 8'



ROOM FINISH SCHEDULE											
NO.	ROOM NAME	FLOORS	BASE	WALLS				CEILING			NOTES
				N	E	S	W	MATERIAL	FINISH	HEIGHT	
101	ENTRY		EXIST	PT-0	PT-0	PT-0	PT-0	EXIST	EXIST	EXIST	INSTALL NEW ACOUSTICAL TILES IN EXISTING GRID
102	LOBBY		EXIST	EXIST	PT-0	PT-0	PT-0	EXIST	EXIST	EXIST	
103	ELEVATOR MACHINE ROOM		EXIST	EXIST	EXIST	EXIST	EXIST	EXIST	EXIST	EXIST	
104	ELECTRICAL		EXIST	EXIST	EXIST	EXIST	EXIST	EXIST	EXIST	EXIST	
105	BEDROOM	VT-1	VB-1	PT-0	PT-0	PT-0	PT-0	GWB	PT-0	7'-8"	5/8" GYPSUM BOARD SUSPENDED CEILING SYSTEM
106	BEDROOM	VT-1	VB-1	PT-0	PT-0	PT-0	PT-0	GWB	PT-0	7'-8"	5/8" GYPSUM BOARD SUSPENDED CEILING SYSTEM
107	BEDROOM	VT-1	VB-1	PT-0	PT-0	PT-0	PT-0	GWB	PT-0	7'-8"	5/8" GYPSUM BOARD SUSPENDED CEILING SYSTEM
108	BEDROOM	VT-1	VB-1	PT-0	PT-0	PT-0	PT-0	GWB	PT-0	7'-8"	5/8" GYPSUM BOARD SUSPENDED CEILING SYSTEM
109	BEDROOM	VT-1	VB-1	PT-0	PT-0	PT-0	PT-0	GWB	PT-0	7'-8"	5/8" GYPSUM BOARD SUSPENDED CEILING SYSTEM
110	BEDROOM	VT-1	VB-1	PT-0	PT-0	PT-0	PT-0	GWB	PT-0	7'-8"	5/8" GYPSUM BOARD SUSPENDED CEILING SYSTEM
111	STORAGE	CPT-1	VB-1	PT-0	PT-0	PT-0	PT-0	EXIST	EXIST	EXIST	INSTALL NEW ACOUSTICAL TILES IN EXISTING GRID
112	ENTRY		EXIST	VB-1	PT-0	PT-0	PT-0	EXIST	EXIST	EXIST	INSTALL NEW ACOUSTICAL TILES IN EXISTING GRID
113	ACCESS		EXIST	VB-1	EXIST	EXIST	EXIST	EXIST	EXIST	EXIST	
114	CORRIDOR	CPT-2	VB-1	PT-0	PT-0	PT-0	PT-0	EXIST	EXIST	EXIST	INSTALL NEW ACOUSTICAL TILES IN EXISTING GRID
115	CORRIDOR	CPT-2	VB-1	PT-0	PT-0	PT-0	PT-0	EXIST	EXIST	EXIST	INSTALL NEW ACOUSTICAL TILES IN EXISTING GRID
116	SENSORY SPACE		EXG	VB-1	PT-0	PT-0	PT-0	ACT		7'-8"	
117	LIVING	CPT-2	VB-1	PT-0	PT-0	PT-0	PT-0	ACT		7'-8"	
118	KITCHEN	VCT-1/VCT2	VB-1	PT-0	PT-0	PT-0	PT-0	ACT		7'-8"	
119	HALL	CPT-2	VB-1	PT-0	PT-0	PT-0	PT-0	ACT		7'-8"	
120	STORAGE	CPT-2	VB-1	PT-0	PT-0	PT-0	PT-0	ACT		7'-8"	
121	HALL	CPT-2	VB-1	PT-0	PT-0	PT-0	PT-0	ACT		7'-8"	
122	LAUNDRY	SV-1	VB-1	PT-0	PT-0	PT-0	PT-0	ACT		7'-8"	
123	LIFE SPACE	VT-1	VB-1	PT-0	PT-0	PT-0	PT-0	GWB	PT-0	7'-8"	5/8" GYPSUM BOARD SUSPENDED CEILING SYSTEM
124	LIFE SPACE	VT-1	VB-1	PT-0	PT-0	PT-0	PT-0	GWB	PT-0	7'-8"	5/8" GYPSUM BOARD SUSPENDED CEILING SYSTEM
125	BATH	SV-1	VB-1	PT-0	PT-0	PT-0	PT-0	GWB	PT-0	7'-8"	5/8" GYPSUM BOARD SUSPENDED CEILING SYSTEM
126	BATH	SV-1	VB-1	PT-0	PT-0	PT-0	PT-0	GWB	PT-0	7'-8"	5/8" GYPSUM BOARD SUSPENDED CEILING SYSTEM
127	BATH	SV-1	VB-1	PT-0	PT-0	PT-0	PT-0	GWB	PT-0	7'-8"	5/8" GYPSUM BOARD SUSPENDED CEILING SYSTEM
128	BATH	SV-1	VB-1	PT-0	PT-0	PT-0	PT-0	GWB	PT-0	7'-8"	5/8" GYPSUM BOARD SUSPENDED CEILING SYSTEM
129	LIVING	CPT-2	VB-1	PT-0	PT-0	PT-0	PT-0	ACT		7'-8"	
130	SENSORY SPACE		CPT-1	VB-1	PT-0	PT-0	PT-0	ACT		7'-8"	
131	HALL		CPT-2	VB-1	PT-0	PT-0	PT-0	EXIST	PT-0	EXIST	INSTALL NEW ACOUSTICAL TILES IN EXISTING GRID
132	OFFICE		CPT-1	VB-1	PT-0	PT-0	PT-0	EXIST	PT-0	EXIST	
133	OFFICE		CPT-1	VB-1	PT-0	PT-0	PT-0	EXIST	PT-0	EXIST	
134	KITCHEN		VCT-1/VCT2	VB-1	PT-0	PT-0	PT-0	ACT		7'-8"	
135	HALL		CPT-2	VB-1	PT-0	PT-0	PT-0	ACT		7'-8"	
136	LAUNDRY		SV-1	VB-1	PT-0	PT-0	PT-0	ACT		7'-8"	
137	BEDROOM		VT-1	VB-1	PT-0	PT-0	PT-0	GWB	PT-0	7'-8"	5/8" GYPSUM BOARD SUSPENDED CEILING SYSTEM
138	BEDROOM		VT-1	VB-1	PT-0	PT-0	PT-0	GWB	PT-0	7'-8"	5/8" GYPSUM BOARD SUSPENDED CEILING SYSTEM
139	BEDROOM		VT-1	VB-1	PT-0	PT-0	PT-0	GWB	PT-0	7'-8"	5/8" GYPSUM BOARD SUSPENDED CEILING SYSTEM
140	BEDROOM		VT-1	VB-1	PT-0	PT-0	PT-0	GWB	PT-0	7'-8"	5/8" GYPSUM BOARD SUSPENDED CEILING SYSTEM
141	ENTRY		EXIST	EXIST	EXIST	EXIST	EXIST	EXIST		EXIST	
142	STORAGE		EXIST	EXIST	EXIST	EXIST	EXIST	EXIST		EXIST	
143	TOILET		SV-1	VB	PT-0	PT-0	PT-0	ACT		8'-0"	
144	PROGRAM ROOM		EXIST	EXIST	EXIST	EXIST	PT-0	EXIST	EXIST	EXIST	NOTE SV-1 AREA ADJACENT TO SINK CABINET
145	KITCHEN		EXIST	EXIST	EXIST	EXIST	EXIST	EXIST	EXIST	EXIST	
146	OFFICE		EXIST	EXIST	EXIST	EXIST	EXIST	EXIST	EXIST	EXIST	
											GENERAL PAINT AND ACCENT PAINT COLOR LOCATIONS TO BE DETERMINED

FINISH KEY	
EXIST	EXISTING FINISH TO REMAIN
ACT	ACOUSTICAL TILE CEILING
GWB	GYPSUM BOARD
PT-1	ODORLESS, NON-VOC PAINT TO MATCH SHERWIN WILLIAMS COLOR
PT-2	ODORLESS, NON-VOC PAINT TO MATCH SHERWIN WILLIAMS COLOR
PT-3	ODORLESS, NON-VOC PAINT TO MATCH SHERWIN WILLIAMS COLOR
PT-4	ODORLESS, NON-VOC PAINT TO MATCH SHERWIN WILLIAMS COLOR
PL-1	FORMICA LAMINATE, COLOR
PL-2	FORMICA LAMINATE, COLOR
CPT-1	SHAW BROADLOOM CARPET, 5A153 GRADIENT GROUP, COLOR
CPT-2	SHAW BROADLOOM CARPET, 5A151 TINT GROUP, COLOR
VB-1	JOHNSONITE STANDARD VINYL COVE BASE, 4" HIGH, COLOR
VCT-1	ARMSTRONG STANDARD EXCELON MULTICOLOR 12" X 12" TILE, COLOR
VCT-2	ARMSTRONG STANDARD EXCELON MULTICOLOR 12" X 12" TILE, COLOR

Michael Charek Architects
 25 Hartley Street
 Portland, Maine 04103
 (207) 761-0556



Spurwink Bishop Street
 17 Bishop Street
 Portland, ME 04103

Title
 DOOR AND FINISH SCHEDULES

Scale: 1/4" = 1'-0"

Date: 3/4/09

Revisions

ISSUED FOR PERMIT

Sheet
A4