

SPECIFICATION

Provide all design services, construction documents, labor, transportation, equipment, permits, materials, tools, inspections, incidentals, tests and perform all operations in connection with the modification of the existing Wet Pipe Sprinkler System.

Conduct a walk through to evaluate existing conditions and verify that all areas will be protected adequately.

Relocate drops according to the plan to allow for the new partition configuration and new reflected ceiling plan. Include aesthetic considerations into the design. Locate drops in the center of the ceiling tile or if indicated at the quarter point.

Replace heads in finished areas with concealed commercial quick response heads with white cover.

Remove drops and heads of unneeded sprinklers and plug at mains.

Comply with requirements of all Authorities Having Jurisdiction.

Coordinate with installing trades.

Submit equipment and components for review.

Prepare sprinkler drawings and Record Drawings.

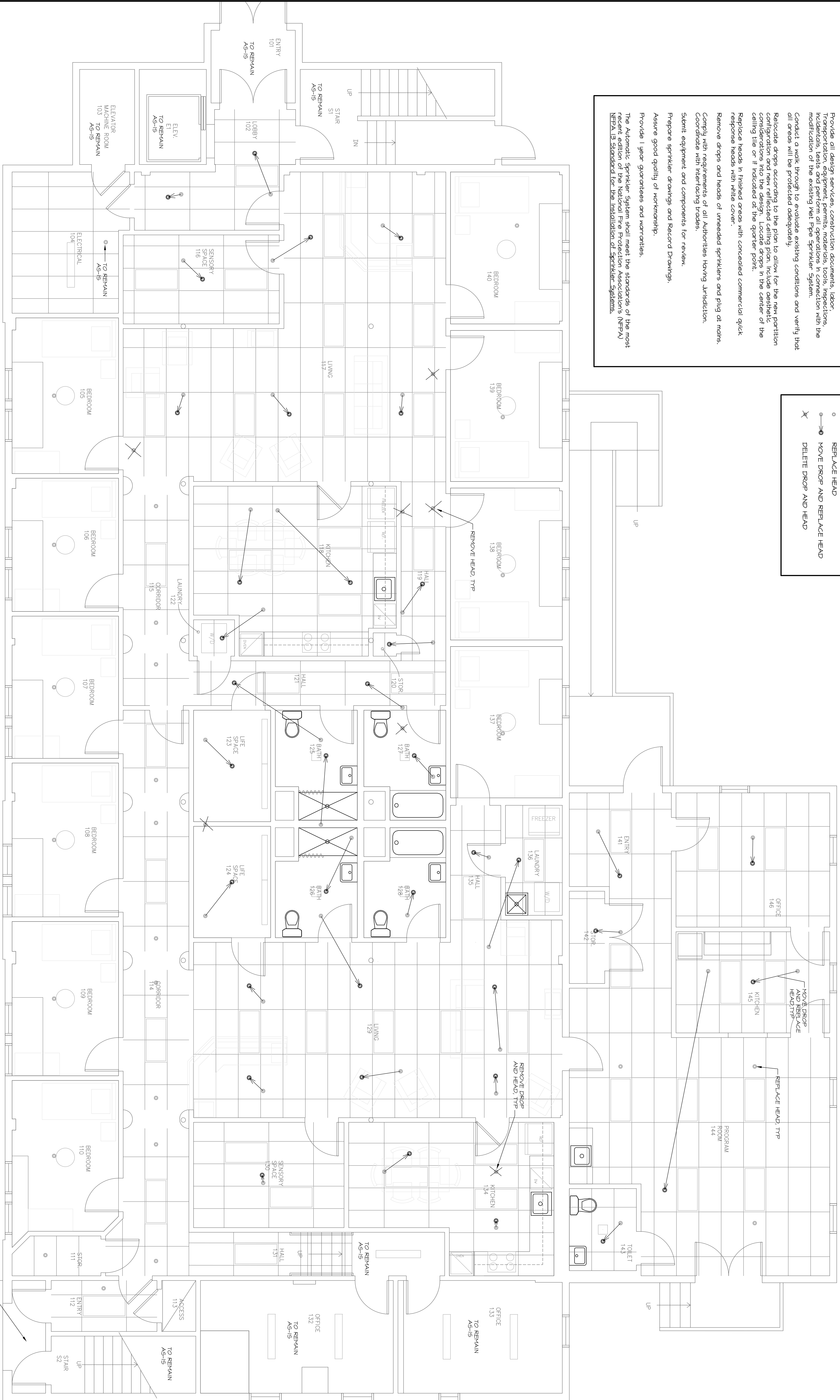
Assure good quality of workmanship.

Provide 1 year guarantees and warranties.

The Automatic Sprinkler System shall meet the standards of the most recent edition of the National Fire Protection Association's (NFPA) NFPA 13 Standard for the Installation of Sprinkler Systems.

LEGEND

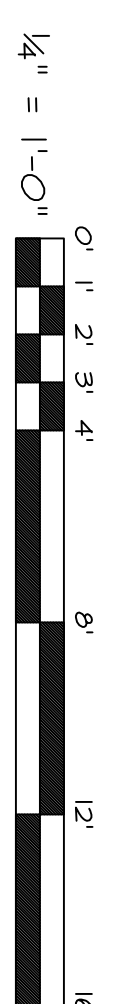
- REPLACE HEAD
- MOVE DROP AND REPLACE HEAD
- ✕ DELETE DROP AND HEAD



EXISTING SPRINKLER ENTRANCE IS LOCATED IN BASEMENT BELOW THIS AREA

SPRINKLER PLAN - FIRST FLOOR

SCALE: 1/4" = 1'-0"



MECHANICAL SYSTEMS ENGINEERS
 ROYAL RIVER CENTER, UNIT #10
 10 FOREST FALLS DRIVE
 PORTLAND, MAINE 04103
 VOICE: (207) 846-1441
 FAX: (207) 846-1443
 msc@msce.com
 © September 2009

© 2009 Michael R. Charek, Architect

Michael R. Charek
 Architect

25 Hartley Street
 Portland, Maine 04103
 (207) 761-0556



Spurwink Bishop Street

17 Bishop Street
 Portland, Maine
 04103

Title
**FIRST FLOOR
 SPRINKLER
 PLAN**

Scale: 1/4" = 1'-0"
 Date: 3/2/09
 Revisions

Sheet
SP1
 MFC 08 NO. 0909