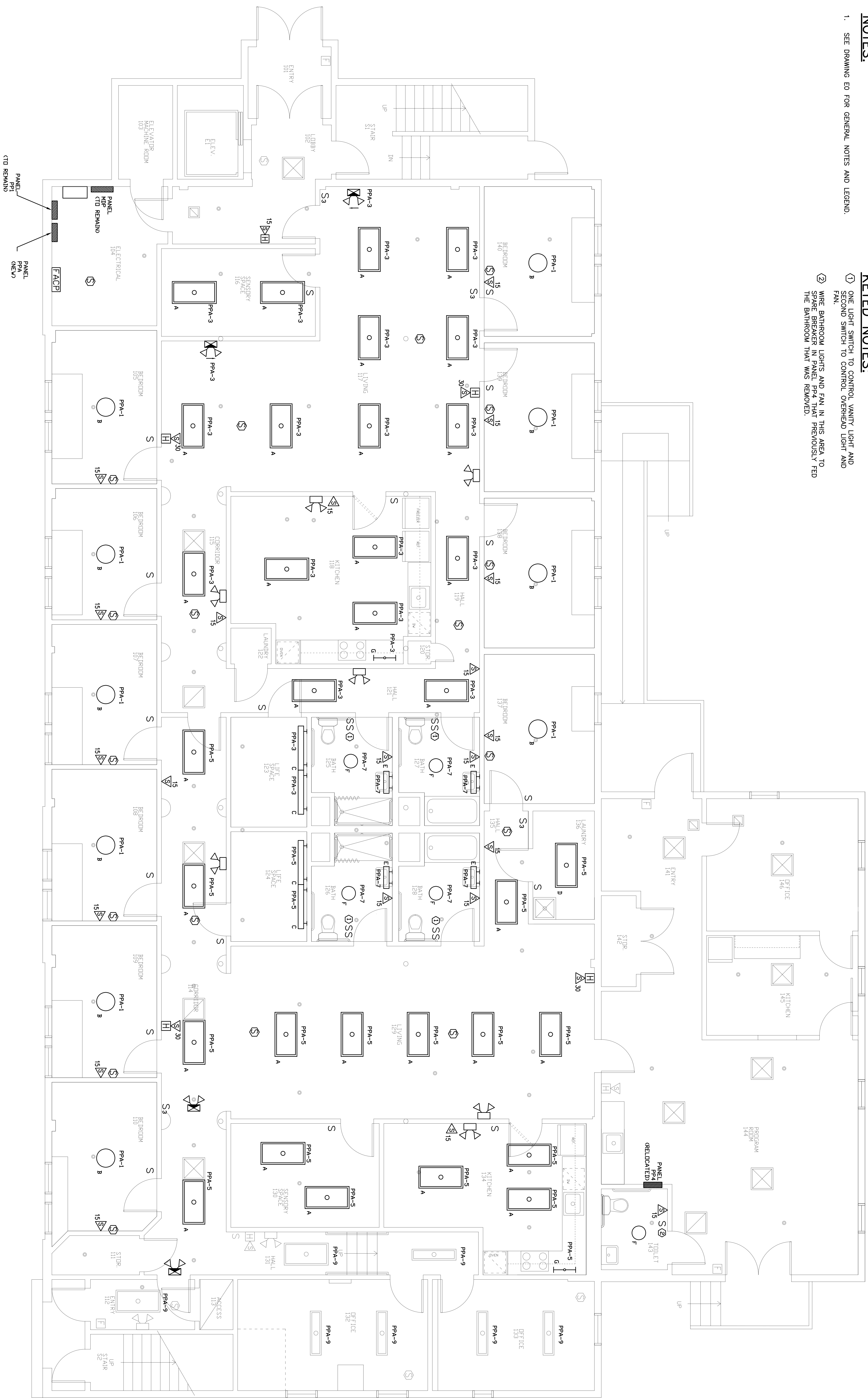


**NOTES:**

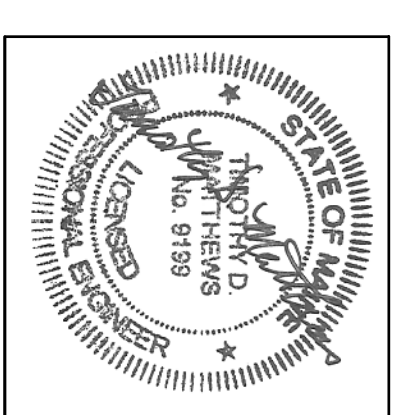
1. SEE DRAWING E0 FOR GENERAL NOTES AND LEGEND.

**KEYED NOTES:**

- ① ONE LIGHT SWITCH TO CONTROL VANITY LIGHT AND SECOND SWITCH TO CONTROL OVERHEAD LIGHT AND FAN
- ② WIRE BATHROOM LIGHTS AND FAN IN THIS AREA TO SWITCHER IN PANEL RATHAN PREVIOUSLY FED THE BATHROOM THAT WAS REMOVED.



**Michael Charek Architects**  
 25 Hartley Street  
 Portland, Maine 04103  
 (207) 761-0556



**Spurwink Bishop Street**  
 17 Bishop Street  
 Portland, Maine 04103

<b>Title</b>	ELECTRICAL LIGHTING & FIRE ALARM PLAN
<b>Scale:</b>	1/4"=1'-0"
<b>Date:</b>	2/6/09
<b>Revisions</b>	

Sheet

**SWIFTCURRENT**  
 Engineering Services  
 273 Main Street  
 Yarmouth, ME 04096  
 Tel: (207) 841-2880

**E3**