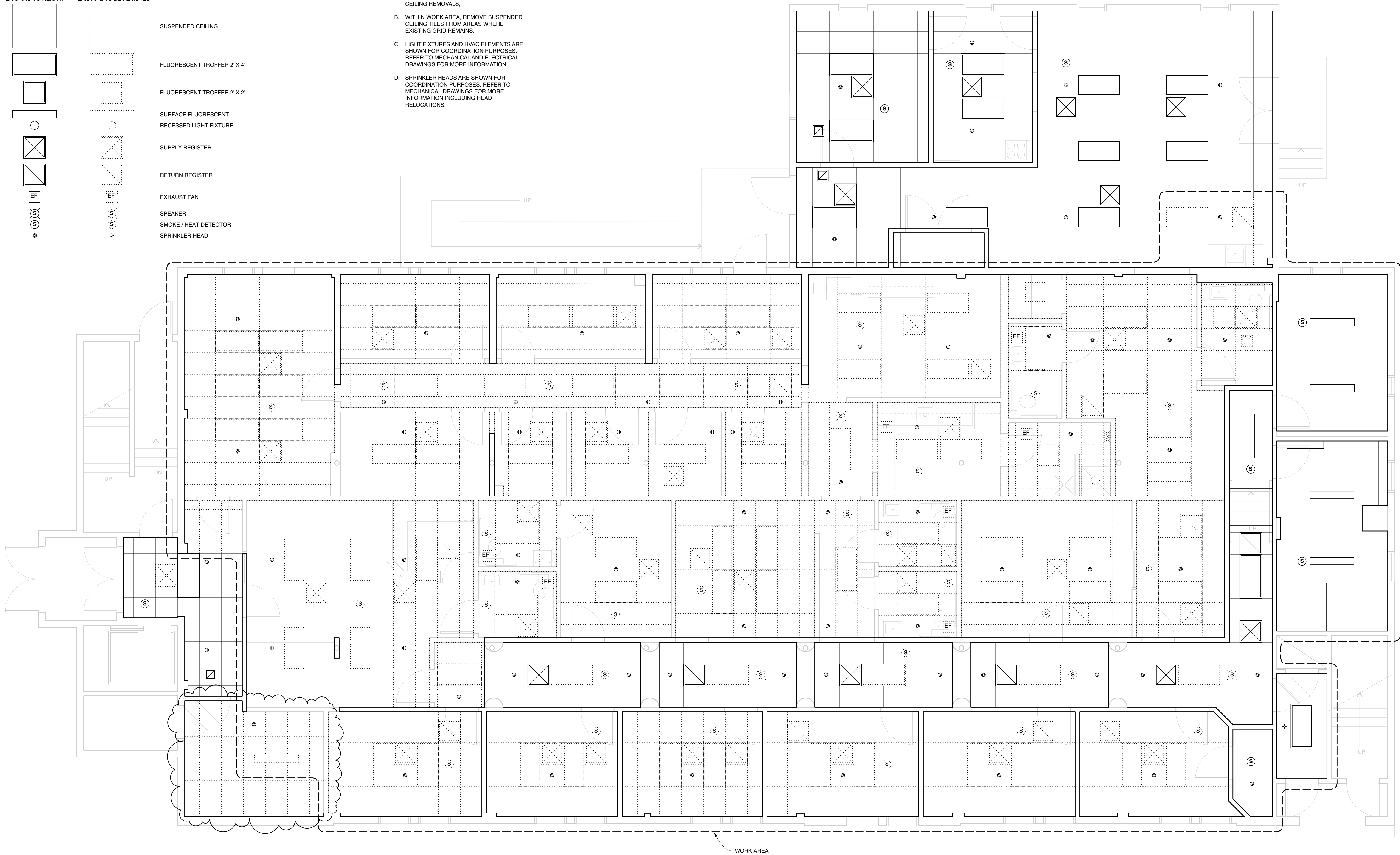
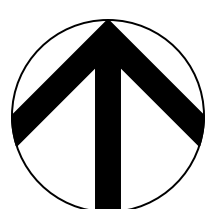


EXISTING TO REMAIN	EXISTING TO BE REMOVED

- A. INTENT OF DRAWING IS TO SHOW AREAS OF CEILING REMOVALS,
- B. WITHIN WORK AREA, REMOVE SUSPENDED CEILING TILES FROM AREAS WHERE EXISTING GRID REMAINS,
- C. LIGHT FIXTURES AND HVAC ELEMENTS ARE SHOWN FOR COORDINATION PURPOSES. REFER TO MECHANICAL AND ELECTRICAL DRAWINGS FOR MORE INFORMATION,
- D. SPRINKLER HEADS ARE SHOWN FOR COORDINATION PURPOSES. REFER TO MECHANICAL DRAWINGS FOR MORE INFORMATION INCLUDING HEAD RELOCATIONS.



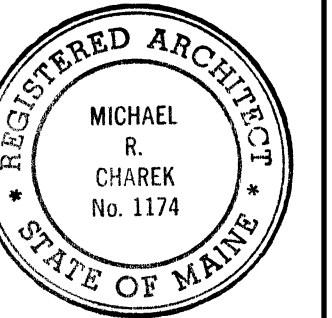
1 **CEILING DEMOLITION PLAN**
SCALE: 1/4" = 1'-0"
1' 2' 4' 8'



© 2009 Michael R. Charek, Architect

**Michael Charek
Architects**

Portland, Maine 04103
(207) 761-0556



Spurwink Bishop Street

17 Bishop Street
Portland, ME 04103

itle

CEILING
DEMOLITION
PLAN

Scale: 1/4" = 1'-0"

Date: 3/16/09

Revisions

 INDICATES REVISION

**ISSUED FOR
PERMIT**

heet

D2