

DOOR SCHEDULE																									
NO.	DOOR	FRAME			TYPE			MAT.			FIN.			HEAD		JAMB		SILL		HDWR.		FIRE		NOTES	
NO.	TYPE	MAT.	FIN.	WIDTH	HEIGHT	THICK.	TYPE	MAT.	FIN.	HEAD	JAMB	SILL	HDWR.	FIRE	NOTES										
101	EXG	--	--	--	--	--	EXG	--	--	--	--	--	EXG	--											
102	EXG	--	--	--	--	--	EXG	--	--	--	--	--	EXG	--											
103	EXG	--	--	--	--	--	EXG	--	--	--	--	--	EXG	--											
104	EXG	--	--	--	--	--	EXG	--	--	--	--	--	EXG	--											
105	EXG	--	--	--	--	--	EXG	--	--	--	--	--	EXG	--	2										
106	EXG	--	--	--	--	--	EXG	--	--	--	--	--	EXG	--	2										
107	EXG	--	--	--	--	--	EXG	--	--	--	--	--	EXG	--	2										
108	EXG	--	--	--	--	--	EXG	--	--	--	--	--	EXG	--	2										
109	EXG	--	--	--	--	--	EXG	--	--	--	--	--	EXG	--	2										
110	EXG	--	--	--	--	--	EXG	--	--	--	--	--	EXG	--	2										
111	X08	WD-SC	NAT	3'-0"	6'-8"	1 3/4"	1	HM	PT				HW-1		1										
112	EXG	--	--	--	--	--	EXG	--	--	--	--	--	EXG	--											
113	EXG	--	--	--	--	--	EXG	--	--	--	--	--	EXG	--											
114	EXG	--	--	--	--	--	EXG	--	--	--	--	--	EXG	--											
115	X03	WD-SC	NAT	3'-0"	6'-8"	1 3/4"	1	HM	PT				HW-2		1,2										
116	X18	WD-SC	NAT	3'-0"	6'-8"	1 3/4"	1	HM	PT				HW-3		1,2,3										
117	X17	WD-SC	NAT	3'-0"	6'-8"	1 3/4"	1	HM	PT				HW-4		1,3										
118	C	WD-SC	NAT	3'-0"	6'-8"	1 3/4"	1	HM	PT				HW-5												
120	A	WD-SC	NAT	1'-8"	6'-8"	1 3/4"	1	HM	PT				HW-1												
122	X06	WD-SC	NAT	3'-0"	6'-8"	1 3/4"	1	HM	PT				HW-1		1										
123	X16	WD-SC	NAT	3'-0"	6'-8"	1 3/4"	1	HM	PT				HW-3		1,3										
124	X10	WD-SC	NAT	3'-0"	6'-8"	1 3/4"	1	HM	PT				HW-3		1,3										
125	A	WD-SC	NAT	3'-0"	6'-8"	1 3/4"	1	HM	PT				HW-6												
126	A	WD-SC	NAT	3'-0"	6'-8"	1 3/4"	1	HM	PT				HW-6												
127	A	WD-SC	NAT	3'-0"	6'-8"	1 3/4"	1	HM	PT				HW-6												
128	A	WD-SC	NAT	3'-0"	6'-8"	1 3/4"	1	HM	PT				HW-6												
129	X20	WD-SC	NAT	3'-0"	6'-8"	1 3/4"	1	HM	PT				HW-4		1,3										
130	X05	WD-SC	NAT	3'-0"	6'-8"	1 3/4"	1	HM	PT				HW-3		1,2,3										
132	EXG	--	--	--	--	--	EXG	--	--	--	--	--	EXG	--											
133	EXG	--	--	--	--	--	EXG	--	--	--	--	--	EXG	--											
134	C	WD-SC	NAT	3'-0"	6'-8"	1 3/4"	1	HM	PT				HW-5												
136	X07	WD-SC	NAT	3'-0"	6'-8"	1 3/4"	1	HM	PT				HW-1		1,4										
137	X19	WD-SC	NAT	3'-0"	6'-8"	1 3/4"	1	HM	PT				HW-3		1,2										
138	X23	WD-SC	NAT	3'-0"	6'-8"	1 3/4"	1	HM	PT				HW-3		1,2										
139	X22	WD-SC	NAT	3'-0"	6'-8"	1 3/4"	1	HM	PT				HW-3		1,2										
140	X21	WD-SC	NAT	3'-0"	6'-8"	1 3/4"	1	HM	PT				HW-3		1,2										
141	EXG	--	--	--	--	--	EXG	--	--	--	--	--	EXG	--											
142	EXG	--	--	--	--	--	EXG	--	--	--	--	--	EXG	--											
143	A	WD-SC	NAT	1'-8"	6'-8"	1 3/4"	1	HM	PT				HW-6												
144	EXG	--	--	--	--	--	EXG	--	--	--	--	--	EXG	--											
145	EXG	--	--	--	--	--	EXG	--	--	--	--	--	EXG	--											
146	EXG	--	--	--	--	--	EXG	--	--	--	--	--	EXG	--											
147	EXG	--	--	--	--	--	EXG	--	--	--	--	--	EXG	--											
148	X04	WD-SC	NAT	3'-0"	6'-8"	1 3/4"	1	HM	PT				HW-1		1,4										

MATERIAL/FINISH ABBREVIATIONS

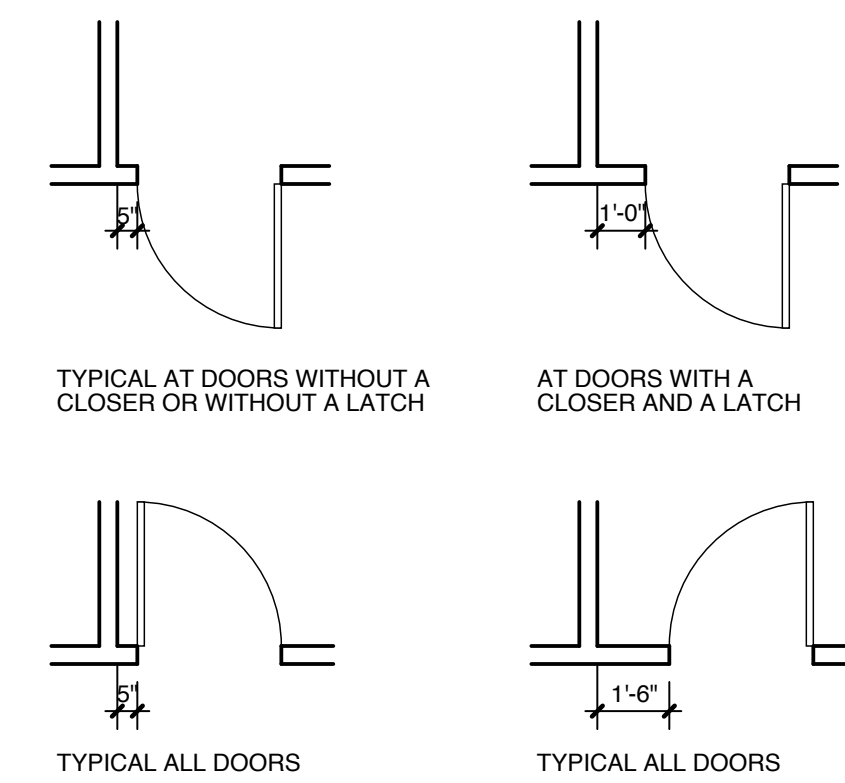
EXG EXISTING
HM HOLLOW METAL
NAT NATURAL FINISH
PT PAINT
SC SOLID CORE
STL STEEL
WD WOOD

NOTES

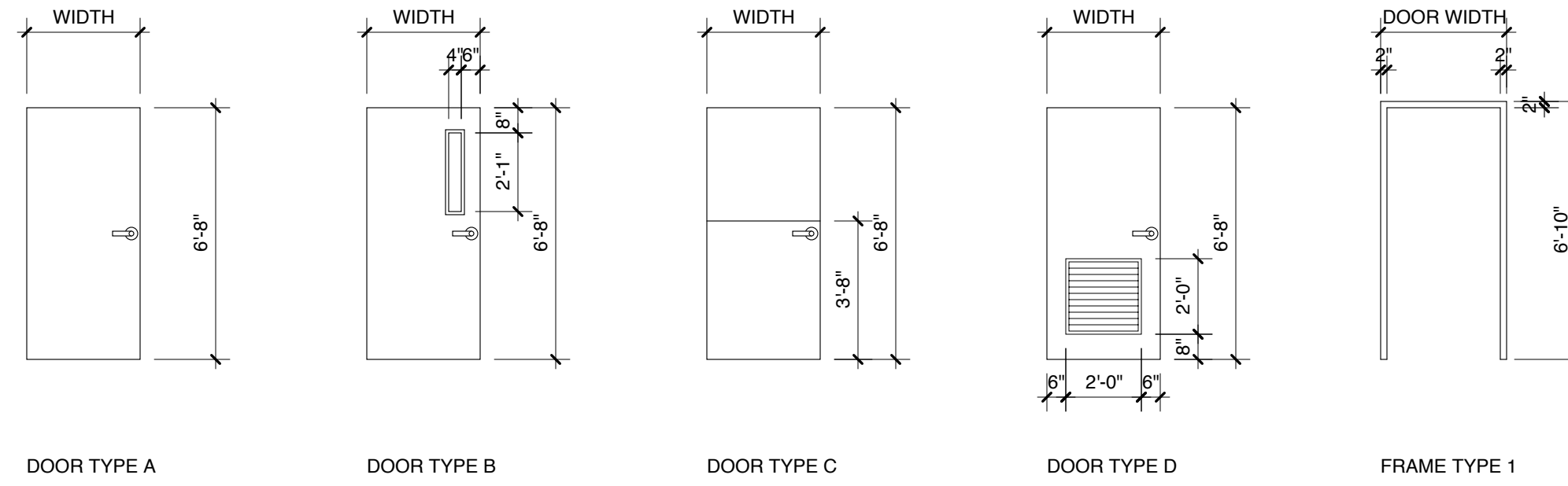
- USE EXISTING HARDWARE ON REUSED DOORS WHERE APPLICABLE.
- CHANGE LOCKSET TO PASSAGE SET.
- CUT IN VIEW LIGHT TO MATCH DOOR TYPE B
- CUT IN LOUVER TO MATCH DOOR TYPE D

HARDWARE

HW-1 3 HINGES
1 LOCK - STORAGE FUNCTION
HW-2 3 HINGES
1 PASSAGE SET
CLOSER
HW-3 3 HINGES
1 PASSAGE SET
HW-4 3 HINGES
1 LOCKSET
1 CLOSER
HW-5 4 HINGES
1 LOCKSET
1 DUTCH DOOR BOLT
HW-6 3 HINGES
1 PRIVACY SET



1 TYPICAL DOOR JAMB CLEARANCES
SCALE: 1/4" = 1'-0"
1' 2' 4' 8'

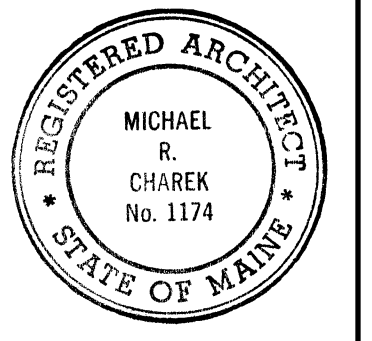


ROOM FINISH SCHEDULE												
NO.	ROOM NAME	FLOORS	BASE	WALLS				CEILING			NOTES	
NO.	ROOM NAME	FLOORS	BASE	N	E	S	W	MATERIAL	FINISH	HEIGHT	NOTES	
101	ENTRY		EXIST	PT-0	PT-0	PT-0	PT-0	EXIST	EXIST	EXIST	INSTALL NEW ACOUSTICAL TILES IN EXISTING GRID	
102	LOBBY		EXIST	EXIST	EXIST	EXIST	EXIST	EXIST	EXIST	EXIST		
103	ELEVATOR MACHINE ROOM		EXIST	EXIST	EXIST	EXIST	EXIST	EXIST	EXIST	EXIST		
104	ELECTRICAL		EXIST	PT-0	PT-0	PT-0	PT-0	EXIST	EXIST	EXIST		
105	BEDROOM	VT-1	VB-1	PT-0	PT-0	PT-0	PT-0	GWB	PT-0	7'-8"	5/8" GYPSUM BOARD SUSPENDED CEILING SYSTEM	
106	BEDROOM	VT-1	VB-1	PT-0	PT-0	PT-0	PT-0	GWB	PT-0	7'-8"	5/8" GYPSUM BOARD SUSPENDED CEILING SYSTEM	
107	BEDROOM	VT-1	VB-1	PT-0	PT-0	PT-0	PT-0	GWB	PT-0	7'-8"	5/8" GYPSUM BOARD SUSPENDED CEILING SYSTEM	
108	BEDROOM	VT-1	VB-1	PT-0	PT-0	PT-0	PT-0	GWB	PT-0	7'-8"	5/8" GYPSUM BOARD SUSPENDED CEILING SYSTEM	
109	BEDROOM	VT-1	VB-1	PT-0	PT-0	PT-0	PT-0	GWB	PT-0	7'-8"	5/8" GYPSUM BOARD SUSPENDED CEILING SYSTEM	
110	BEDROOM	VT-1	VB-1	PT-0	PT-0	PT-0	PT-0	GWB	PT-0	7'-8"	5/8" GYPSUM BOARD SUSPENDED CEILING SYSTEM	
111	STORAGE	CPT-1	VB-1	PT-0	PT-0	PT-0	PT-0	EXIST	EXIST	EXIST	INSTALL NEW ACOUSTICAL TILES IN EXISTING GRID	
112	ENTRY		EXIST	VB-1	PT-0	PT-0	PT-0	EXIST	EXIST	EXIST	INSTALL NEW ACOUSTICAL TILES IN EXISTING GRID	
113	ACCESS		EXIST	VB-1	EXIST	EXIST	EXIST	EXIST	EXIST	EXIST		
114	CORRIDOR	CPT-2	VB-1	PT-0	PT-0	PT-0	PT-0	EXIST	EXIST	EXIST	INSTALL NEW ACOUSTICAL TILES IN EXISTING GRID	
115	CORRIDOR	CPT-2	VB-1	PT-0	PT-0	PT-0	PT-0	EXIST	EXIST	EXIST	INSTALL NEW ACOUSTICAL TILES IN EXISTING GRID	
116	SENSORY SPACE		EXG	VB-1	PT-0	PT-0	PT-0	ACT		7'-8"		
117	LIVING	CPT-2	VB-1	PT-0	PT-0	PT-0	PT-0	ACT		7'-8"		
118	KITCHEN	VCT-1/VCT/2	VB-1	PT-0	PT-0	PT-0	PT-0	ACT		7'-8"		
119	HALL	CPT-2	VB-1	PT-0	PT-0	PT-0	PT-0	ACT		7'-8"		
120	STORAGE	CPT-2	VB-1	PT-0	PT-0	PT-0	PT-0	ACT		7'-8"		
121	HALL	CPT-2	VB-1	PT-0	PT-0	PT-0	PT-0	ACT		7'-8"		
122	STORAGE	VCT-1/VCT/2	VB-1	PT-0	PT-0	PT-0	PT-0	ACT		7'-8"		
123	LIFE SPACE	VT-1	VB-1	PT-0	PT-0	PT-0	PT-0	GWB	PT-0	7'-8"	5/8" GYPSUM BOARD SUSPENDED CEILING SYSTEM	
124	LIFE SPACE	VT-1	VB-1	PT-0	PT-0	PT-0	PT-0	GWB	PT-0	7'-8"	5/8" GYPSUM BOARD SUSPENDED CEILING SYSTEM	
125	BATH	SV-1	COVE	PT-0	PT-0	PT-0	PT-0	GWB	PT-0	7'-8"	5/8" GYPSUM BOARD SUSPENDED CEILING SYSTEM	
126	BATH	SV-1	COVE	PT-0	PT-0	PT-0	PT-0	GWB	PT-0	7'-8"	5/8" GYPSUM BOARD SUSPENDED CEILING SYSTEM	
127	BATH	SV-1	COVE	PT-0	PT-0	PT-0	PT-0	GWB	PT-0	7'-8"	5/8" GYPSUM BOARD SUSPENDED CEILING SYSTEM	
128	BATH	SV-1	COVE	PT-0	PT-0	PT-0	PT-0	GWB	PT-0	7'-8"	5/8" GYPSUM BOARD SUSPENDED CEILING SYSTEM	
129	LIVING	CPT-2	VB-1	PT-0	PT-0	PT-0	PT-0	ACT		7'-8"		
130	SENSORY SPACE	CPT-1	VB-1	PT-0	PT-0	PT-0	PT-0	ACT		7'-8"		
131	HALL	CPT-2	VB-1	PT-0	PT-0	PT-0	PT-0	EXIST	PT-0	EXIST	INSTALL NEW ACOUSTICAL TILES IN EXISTING GRID	
132	OFFICE	CPT-1	VB-1	PT-0	PT-0	PT-0	PT-0	EXIST	PT-0	EXIST		
133	OFFICE	CPT-1	VB-1	PT-0	PT-0	PT-0	PT-0	EXIST	PT-0	EXIST		
134	KITCHEN	VCT-1/VCT/2	VB-1	PT-0	PT-0	PT-0	PT-0	ACT		7'-8"		
135	HALL	CPT-2	VB-1	PT-0	PT-0	PT-0	PT-0	ACT		7'-8"		
136	LAUNDRY	SV-1	VB-1	PT-0	PT-0	PT-0	PT-0	ACT		7'-8"		
137	BEDROOM	VT-1	VB-1	PT-0	PT-0	PT-0	PT-0	GWB	PT-0	7'-8"	5/8" GYPSUM BOARD SUSPENDED CEILING SYSTEM	
138	BEDROOM	VT-1	VB-1	PT-0	PT-0	PT-0	PT-0	GWB	PT-0	7'-8"	5/8" GYPSUM BOARD SUSPENDED CEILING SYSTEM	
139	BEDROOM	VT-1	VB-1	PT-0	PT-0	PT-0	PT-0	GWB	PT-0	7'-8"	5/8" GYPSUM BOARD SUSPENDED CEILING SYSTEM	
140	BEDROOM	VT-1	VB-1	PT-0	PT-0	PT-0	PT-0	GWB	PT-0	7'-8"	5/8" GYPSUM BOARD SUSPENDED CEILING SYSTEM	
141	ENTRY		EXIST	EXIST	EXIST	EXIST	EXIST	EXIST		EXIST		
142	STORAGE		EXIST	EXIST	EXIST	EXIST	EXIST	EXIST		EXIST		
143	TOILET	SV-1	VB	PT-0	PT-0	PT-0	PT-0	ACT		8'-0"		
144	PROGRAM ROOM		EXIST	EXIST	EXIST	EXIST	PT-0	EXIST	EXIST	EXIST	NOTE SV-1 AREA ADJACENT TO SINK CABINET	
145	KITCHEN		EXIST	EXIST	EXIST	EXIST	EXIST	EXIST		EXIST		
146	OFFICE		EXIST	EXIST	EXIST	EXIST	EXIST	EXIST		EXIST		
147	LAUNDRY	SV-1	VB-1	PT-0	PT-0	PT-0	PT-0	ACT		7'-8"		
GENERAL PAINT AND ACCENT PAINT COLOR LOCATIONS TO BE DETERMINED												

FINISH KEY	
EXIST	EXISTING FINISH TO REMAIN
ACT	ACOUSTICAL TILE CEILING
GWB	GYPSUM BOARD
PT-1	ODORLESS, NON-VOC PAINT TO MATCH SHERWIN WILLIAMS COLOR TO BE DETERMINED
PT-2	ODORLESS, NON-VOC PAINT TO MATCH SHERWIN WILLIAMS COLOR TO BE DETERMINED
PT-3	ODORLESS, NON-VOC PAINT TO MATCH SHERWIN WILLIAMS COLOR TO BE DETERMINED
PT-4	ODORLESS, NON-VOC PAINT TO MATCH SHERWIN WILLIAMS COLOR TO BE DETERMINED
PL-1	FORMICA LAMINATE, COLOR TO BE DETERMINED
PL-2	FORMICA LAMINATE, COLOR TO BE DETERMINED
CPT-1	SHAW BROADLOOM CARPET, 5A153 GRADIENT GROUP, COLOR TO BE DETERMINED
CPT-2	SHAW BROADLOOM CARPET, 5A151 TINT GROUP, COLOR TO BE DETERMINED
VB-1	JOHNSONITE STANDARD VINYL COVE BASE, 4" HIGH, COLOR TO BE DETERMINED
VCT-1	ARMSTRONG STANDARD EXCELON MULTICOLOR 12" X 12" TILE, COLOR TO BE DETERMINED
VCT-2	ARMSTRONG STANDARD EXCELON MULTICOLOR 12" X 12" TILE, COLOR TO BE DETERMINED
VT-1	ARMSTRONG NATURAL CREATIONS ARBORART 4" X 36" VINYL PLAN, COLOR TO BE DETERMINED
COVE	INTEGRAL FLASH-COVE BASE USING SHEET VINYL FLOORING

Michael Charek Architects

25 Hartley Street
Portland, Maine 04103
(207) 761-0556



Spurwink Bishop Street

17 Bishop Street
Portland, ME 04103

Title
DOOR AND FINISH SCHEDULES

Scale: 1/4" = 1'-0"

Date: 3/16/09

Revisions
INDICATES REVISION
ISSUED FOR PERMIT

Sheet
A4