

SPECIFICATION

Provide all design services, construction documents, labor, Transportation, equipment, permits, materials, tools, inspections, incidentals, tests and perform all operations in connection with the modification of the existing Wet Pipe Sprinkler System.

Conduct a walk through to evaluate existing conditions and verify that all areas will be protected adequately.

Relocate drops according to the plan to allow for the new partition configuration and new reflected ceiling plan. Include aesthetic considerations into the design. Locate drops in the center of the ceiling tile or if indicated at the quarter point.

Replace heads in finished areas with concealed commercial quick response heads with white cover.

Remove drops and heads of unneeded sprinklers and plug at mains.

Comply with requirements of all Authorities Having Jurisdiction. Coordinate with interfacing trades.

Submit equipment and components for review.

Prepare sprinkler drawings and Record Drawings.

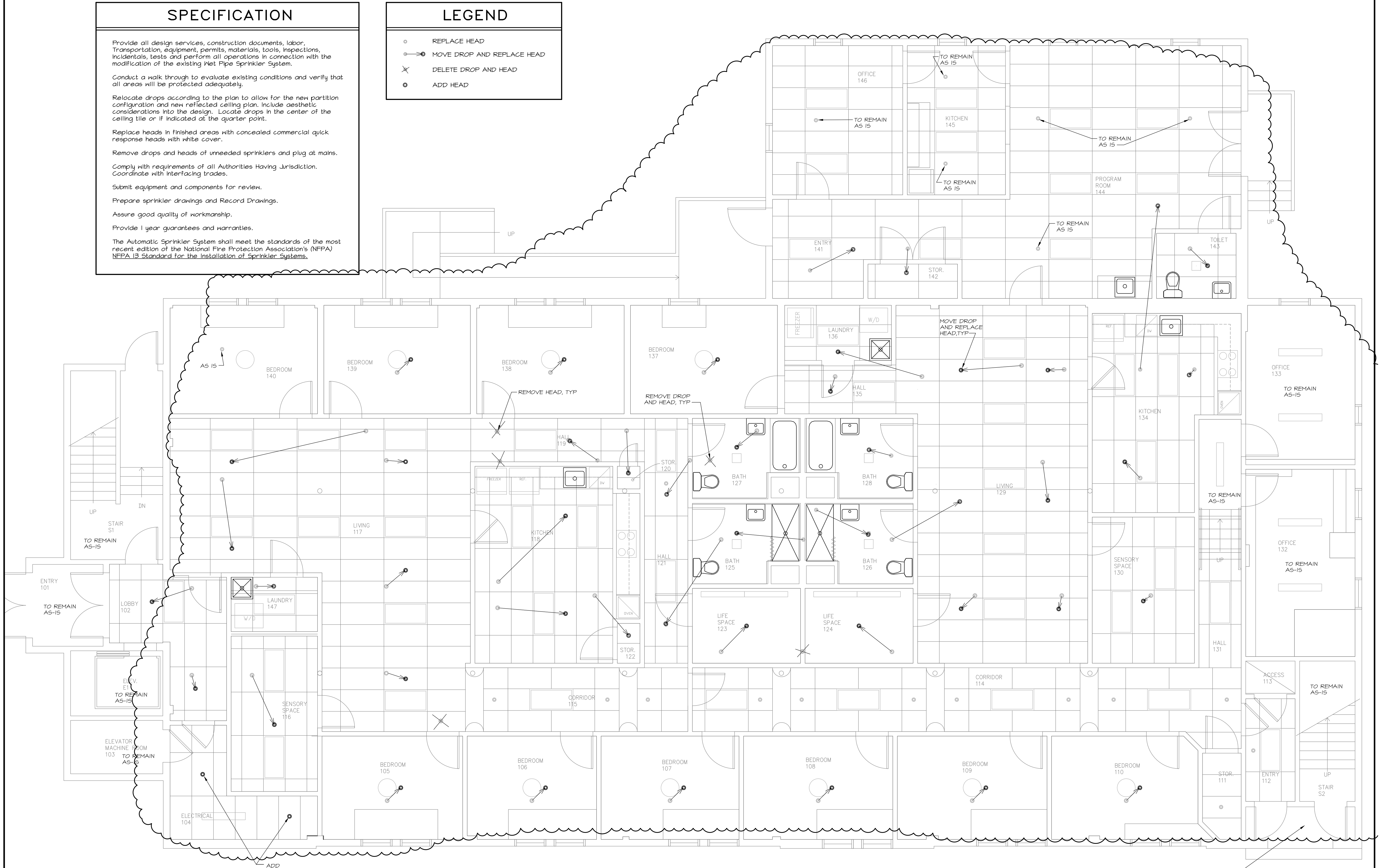
Assure good quality of workmanship.

Provide 1 year guarantees and warranties.

The Automatic Sprinkler System shall meet the standards of the most recent edition of the National Fire Protection Association's (NFPA) NFPA 13 Standard for the Installation of Sprinkler Systems.

LEGEND

- REPLACE HEAD
- MOVE DROP AND REPLACE HEAD
- ✕ DELETE DROP AND HEAD
- ADD HEAD



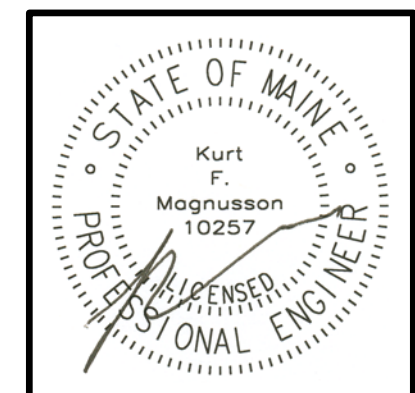
SPRINKLER PLAN - FIRST FLOOR

SCALE: 1/4" = 1'-0"

EXISTING SPRINKLER ENTRANCE IS LOCATED IN BASEMENT, BELOW THIS AREA

March 17, 2009 - 9:54 am \\Merpas\Projects\0909_Bishop_Street\Drawings\0909_F1SP1.dwg

Michael R. Charek
Architect
25 Hartley Street
Portland, Maine 04103
(207) 761-0566



Spurwink Bishop Street
17 Bishop Street
Portland, Maine
04103

Title
**FIRST FLOOR
SPRINKLER
PLAN**

Scale: 1/4" = 1'-0"

Date: 3/16/09

Revisions

Sheet

SP1



MECHANICAL SYSTEMS ENGINEERS
ROYAL RIVER CENTER, UNIT #10
10 FOREST FALLS DRIVE
YARMOUTH, MAINE 04096
VOICE: (207) 846-1441
FAX: (207) 846-1443
mechsyst@maine.net
© COPYRIGHT 2009

© 2009 Michael R. Charek, Architect

MSE JOB NO. 0909