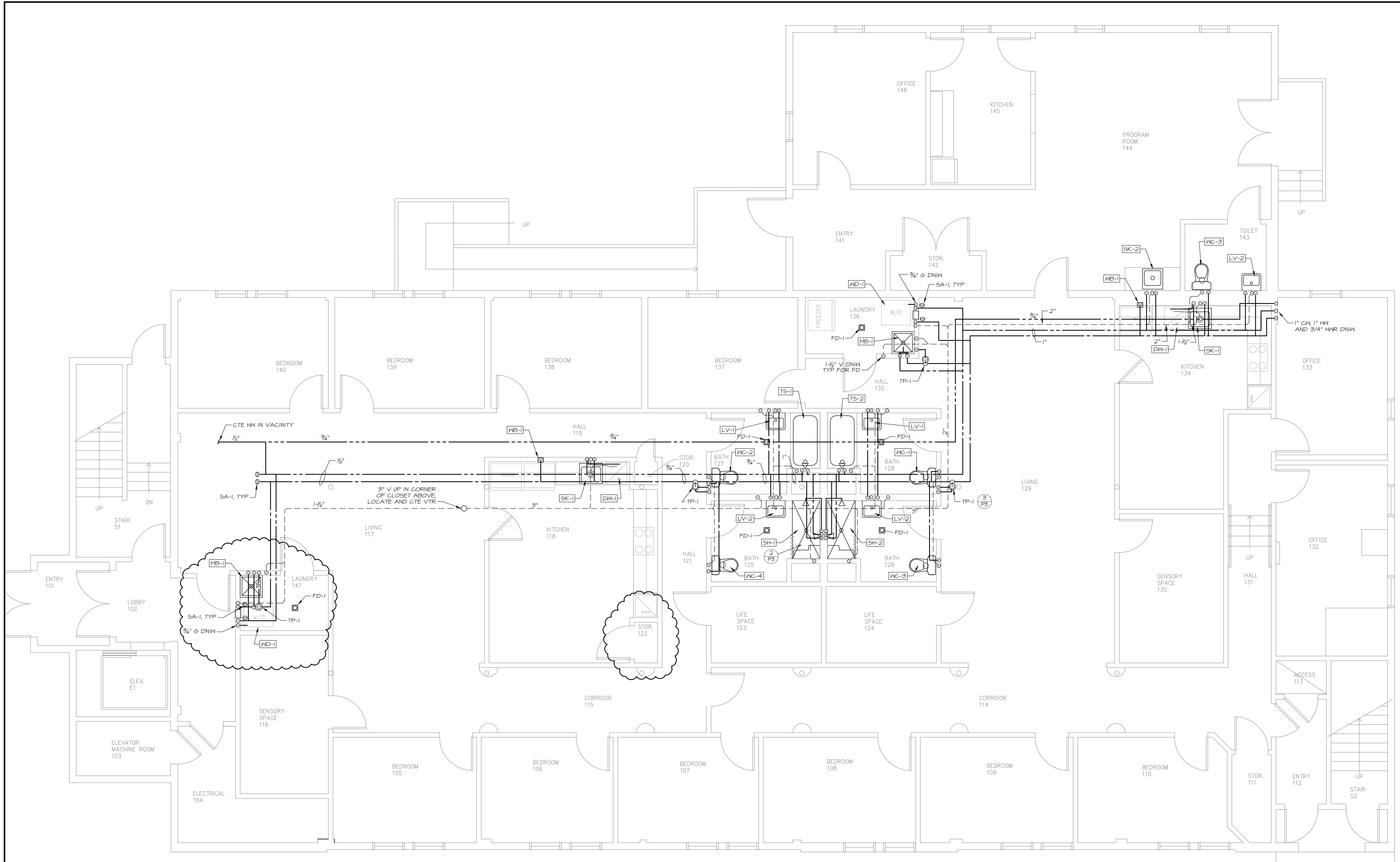
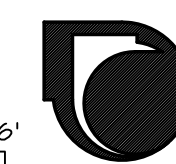
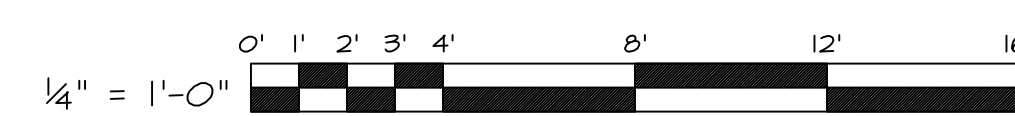


March 16, 2009 - 1:23 PM
\\mechsys\projects\0809_Bishop_Street\Drawings\0809_F1P1P2.dwg



PLUMBING PLAN - FIRST FLOOR

SCALE: 1/4" = 1'-0"

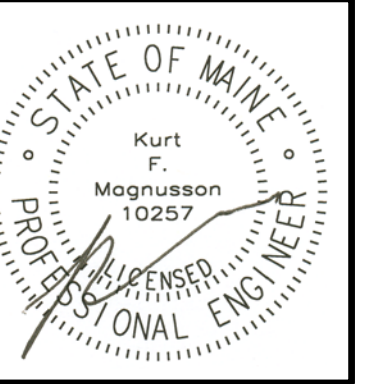


MECHANICAL SYSTEMS ENGINEERS
ROYAL RIVER CENTER, UNIT #10
10 FOREST FALLS DRIVE
YARMOUTH, MAINE 04096
VOICE: (207) 846-1441
FAX: (207) 846-1443
mechsys@maine.me
© COPYRIGHT 2009

© 2009 Michael R. Charek, Architect

Michael R. Charek
Architect

25 Hartley Street
Portland, Maine 04103
(207) 761-0566



Spurwink Bishop
Street

17 Bishop Street
Portland, Maine
04103

Title
**FIRST FLOOR
PLUMBING
PLAN**

Scale: 1/4" = 1'-0"

Date: 3/16/09

Revisions

Sheet

P2

MSE JOB NO. 0909