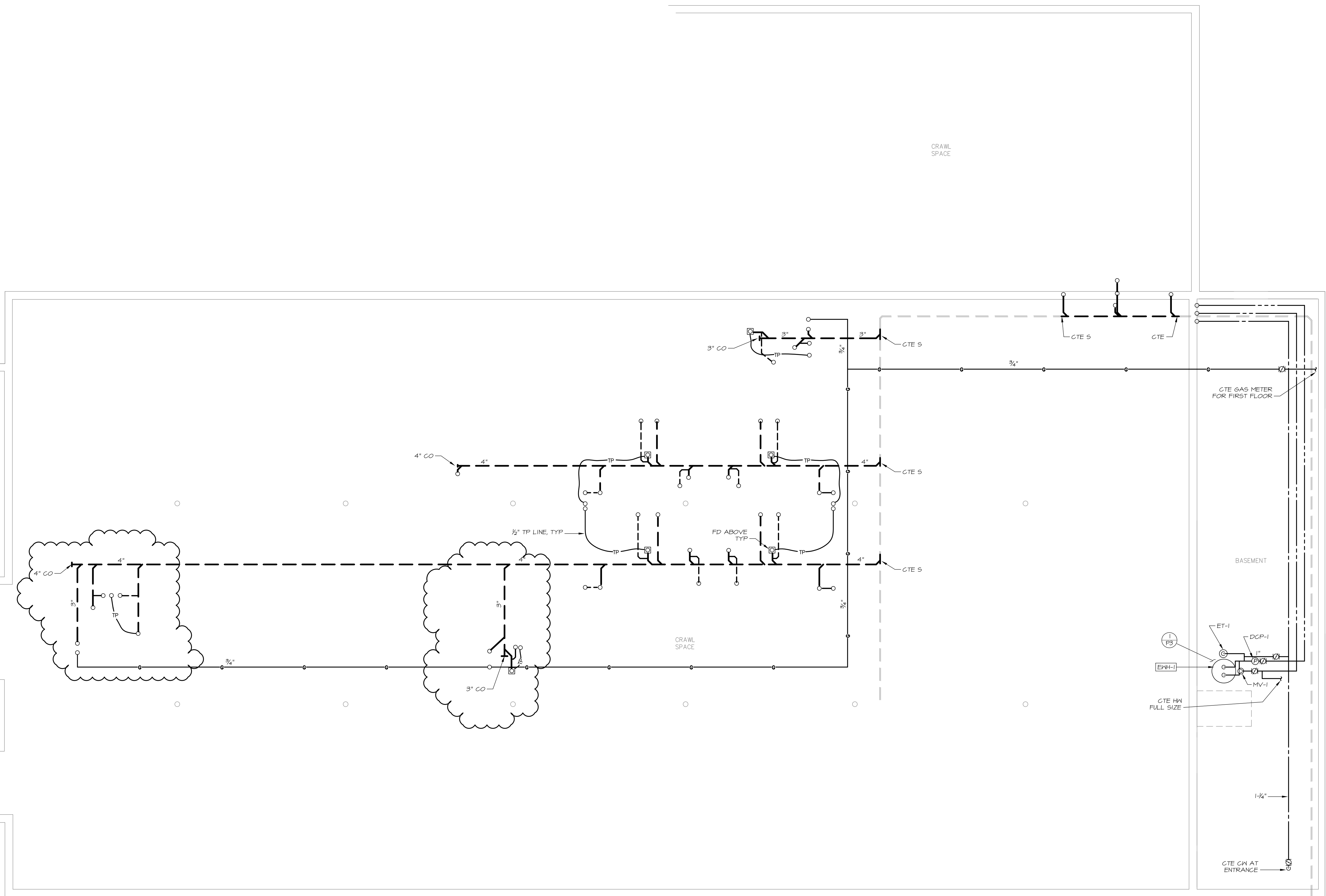


March 16, 2009 - 3:23 PM  
 \\Meerops\Projects\0909 Bishop\_Street\Drawings\0909 FTP\P2.dwg



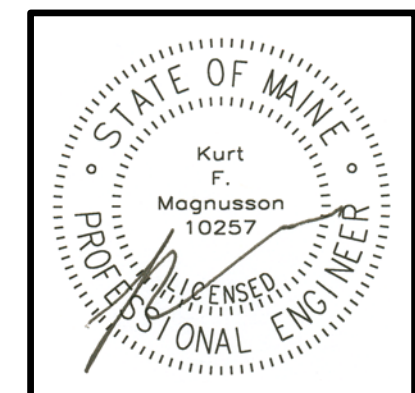
**PLUMBING PLAN - BASEMENT / CRAWL SPACE**  
 SCALE: 1/4" = 1'-0"



**MECHANICAL SYSTEMS ENGINEERS**  
 ROYAL RIVER CENTER, UNIT #10  
 10 FOREST FALLS DRIVE  
 YARMOUTH, MAINE 04096  
 VOICE: (207) 846-1441  
 FAX: (207) 846-1443  
 mechsys@maine.net  
 © COPYRIGHT 2009

© 2009 Michael R. Charek, Architect

**Michael R. Charek**  
 Architect  
 25 Hartley Street  
 Portland, Maine 04103  
 (207) 761-0566



**Spurwink Bishop**  
 Street  
 17 Bishop Street  
 Portland, Maine  
 04103

Title  
**BASEMENT  
 PLUMBING  
 PLAN**

Scale: 1/4" = 1'-0"  
 Date: 3/16/09

Revisions

Sheet

**P1**

MSE JOB NO. 0909