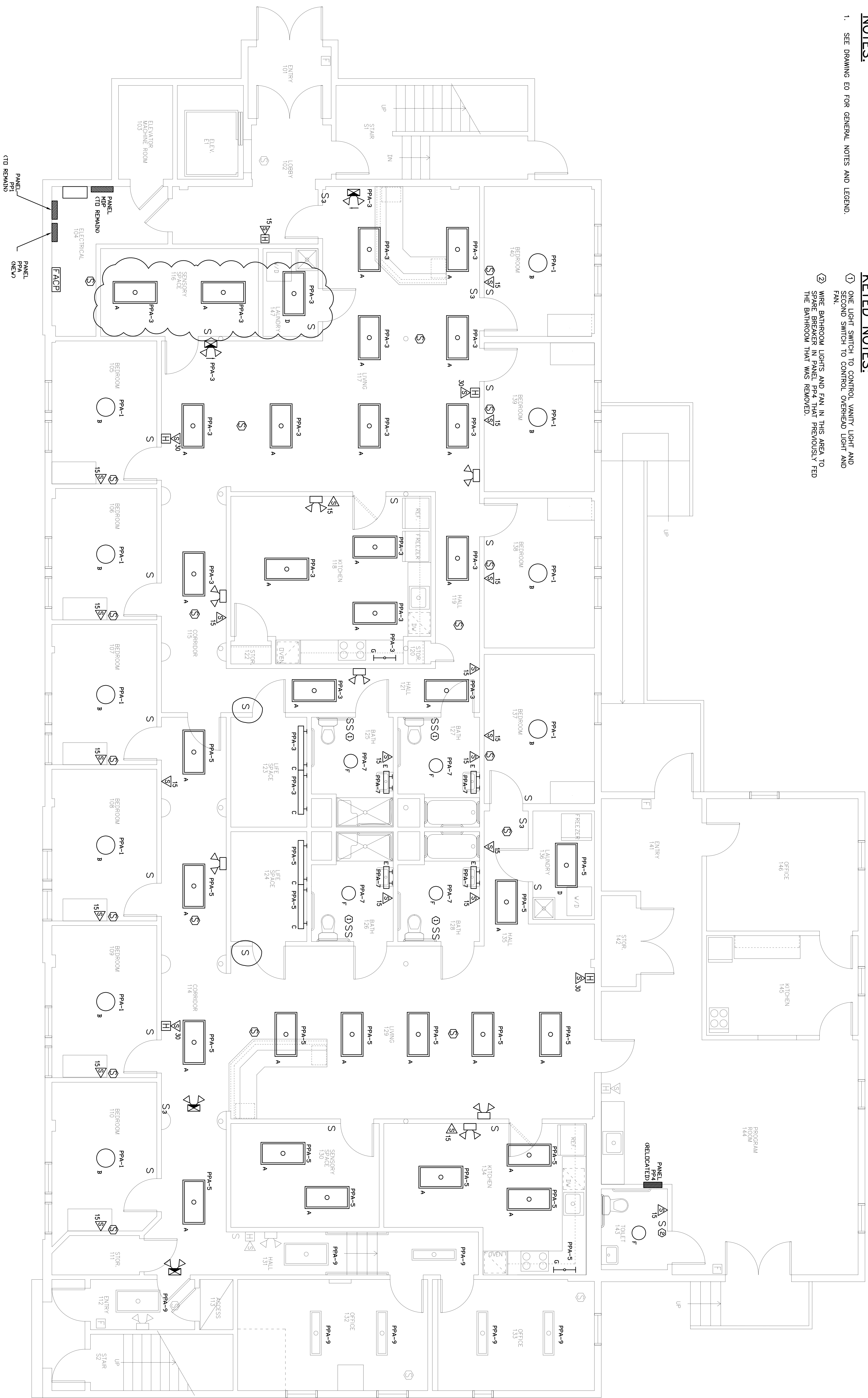


**NOTES:**

- 1. SEE DRAWING E0 FOR GENERAL NOTES AND LEGEND.

**KEYED NOTES:**

- ① ONE LIGHT SWITCH TO CONTROL VANITY LIGHT AND SECOND SWITCH TO CONTROL OVERHEAD LIGHT AND FAN
- ② WIRE BATHROOM LIGHTS AND FAN IN THIS AREA TO SURE BREAKER IN PANEL PPA4 IS MORE THAN PREVIOUSLY FED THE BATHROOM THAT WAS REMOVED.



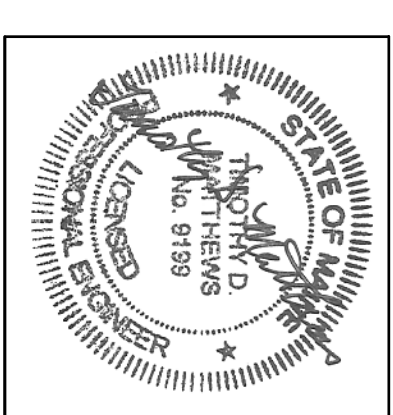
© 2009 Michael R. Charek, Architect

**SWIFTCURRENT**  
 Engineering Services  
 273 Main Street  
 Yarmouth, ME 04096  
 Tel: (207) 841-2880

Sheet	<b>E3</b>
Revisions	Revision #1 3/16/09
Date:	2/6/09
Scale:	1/4"=1'-0"
Title	ELECTRICAL LIGHTING & FIRE ALARM PLAN

**Spurwink  
 Bishop Street**

17 Bishop Street  
 Portland, Maine 04103



**Michael Charek  
 Architects**

25 Hartley Street  
 Portland, Maine 04103  
 (207) 761-0556