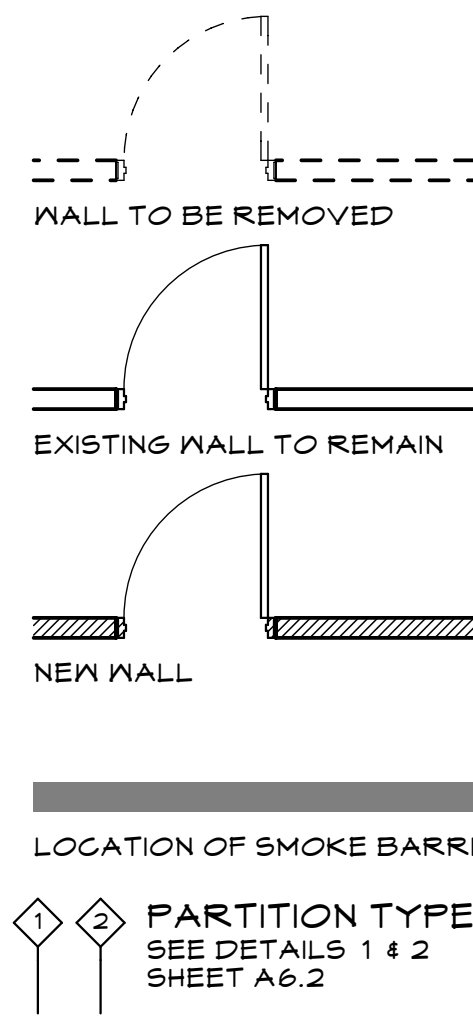


LEGEND

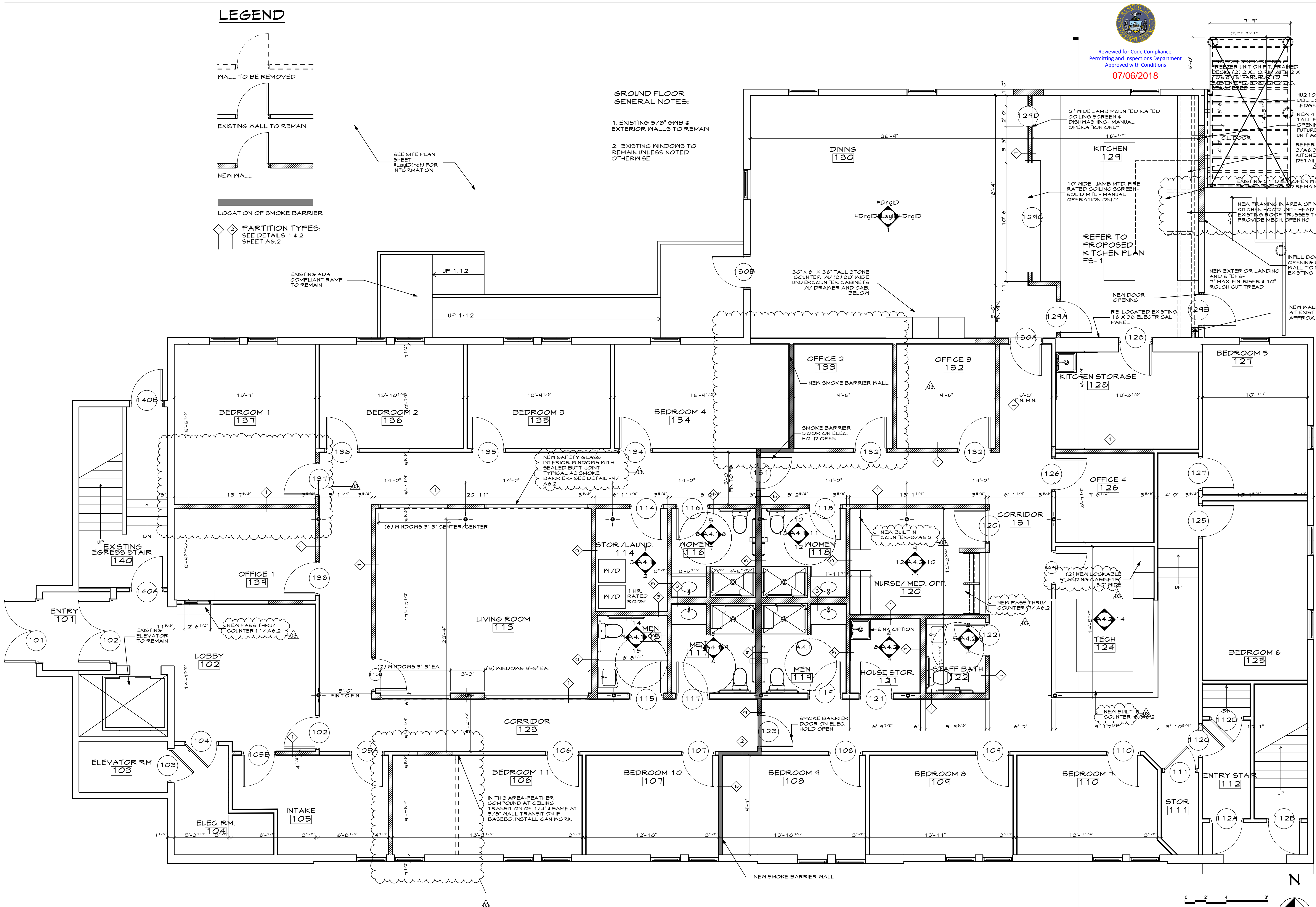


SEE SITE PLAN SHEET 141D(REF) FOR INFORMATION

GROUND FLOOR GENERAL NOTES:

- 1. EXISTING 5/8" GWB @ EXTERIOR WALLS TO REMAIN
- 2. EXISTING WINDOWS TO REMAIN UNLESS NOTED OTHERWISE

Reviewed for Code Compliance
 Permitting and Inspections Department
 Approved with Conditions
 07/06/2018



1 FIRST FLOOR PLAN
 SCALE: 1/4" = 1'-0"

THIS DRAWING IS AN INSTRUMENT OF SERVICE AND SHALL REMAIN THE PROPERTY OF WHIPPLE CALLENDER ARCHITECTS. IT SHALL NOT BE USED FOR ANY OTHER PURPOSE THAN THAT FOR WHICH IT IS SPECIFICALLY FURNISHED.

PINETREE RECOVERY
 17 BISHOP STREET PORTLAND, MAINE 04103

WHIPPLE CALLENDER ARCHITECTS

136 PLEASANT AV.
 PORTLAND, ME 04103
 P 207.775.2696
 F 207.775.3631
 www.whipplecallender.com

MARK	DATE	DESCRIPTION
1	11.6.17	SITE REVISIONS
2	12.1.17	SITE REV. & FREEZER DELETED
3	2.13.18	BUILT IN DETAILS/INT. WALL REV.
4	3.15.18	PLAN REV-LABEL/GRAPHIC
5	5.22.18	CAMERA LOC. & ELEC. SYMBOLS
6	4.11.19	FREESTANDING FREEZER

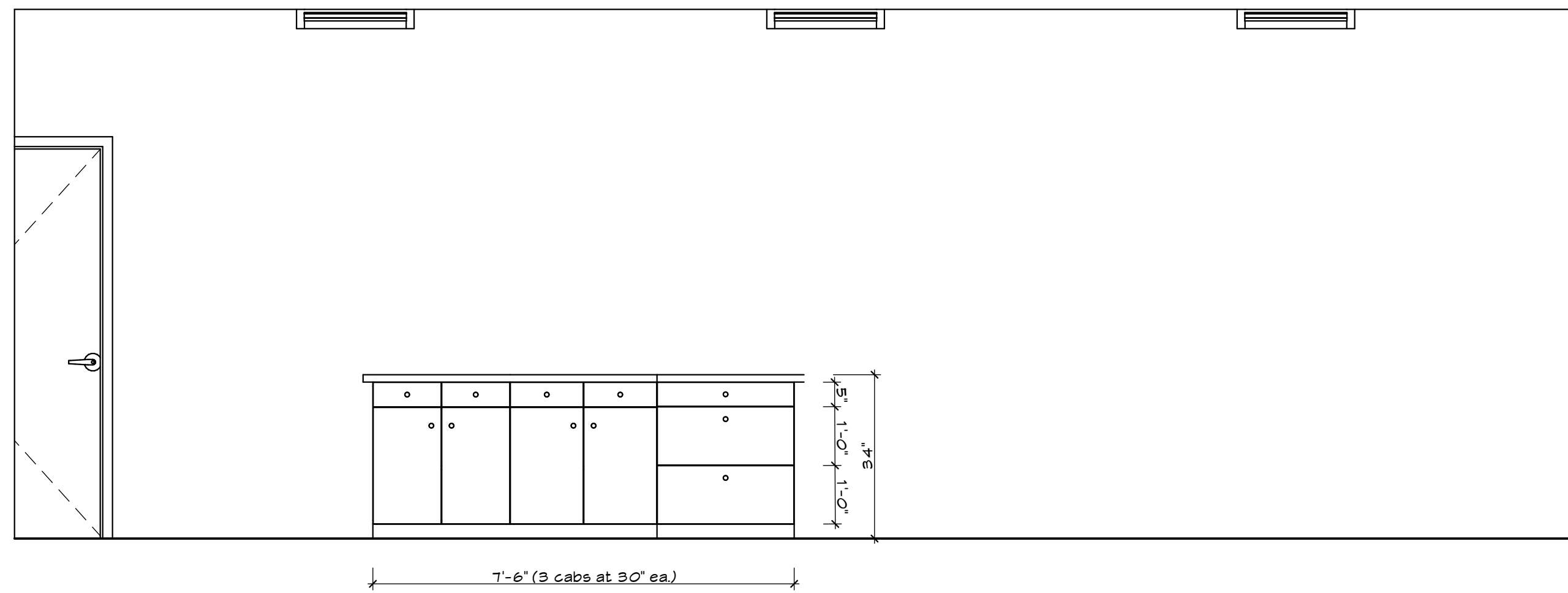
DATE: 5/24/18
 CHECKED BY: JAD
 DRAWN BY: CJC
 JOB: 2017 - BISHOP
 SHEET TITLE: FIRST FLOOR PLAN

A1.2

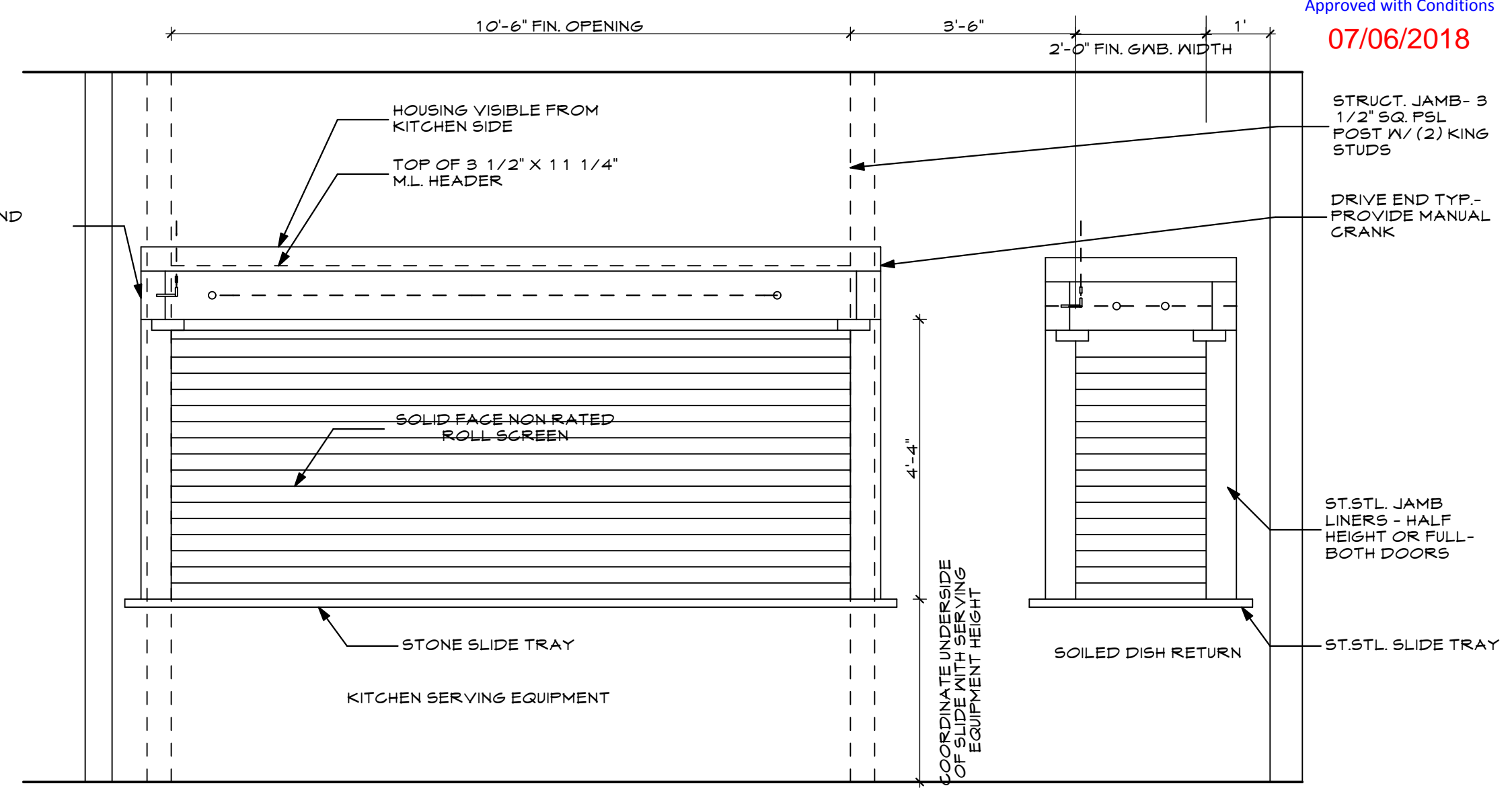
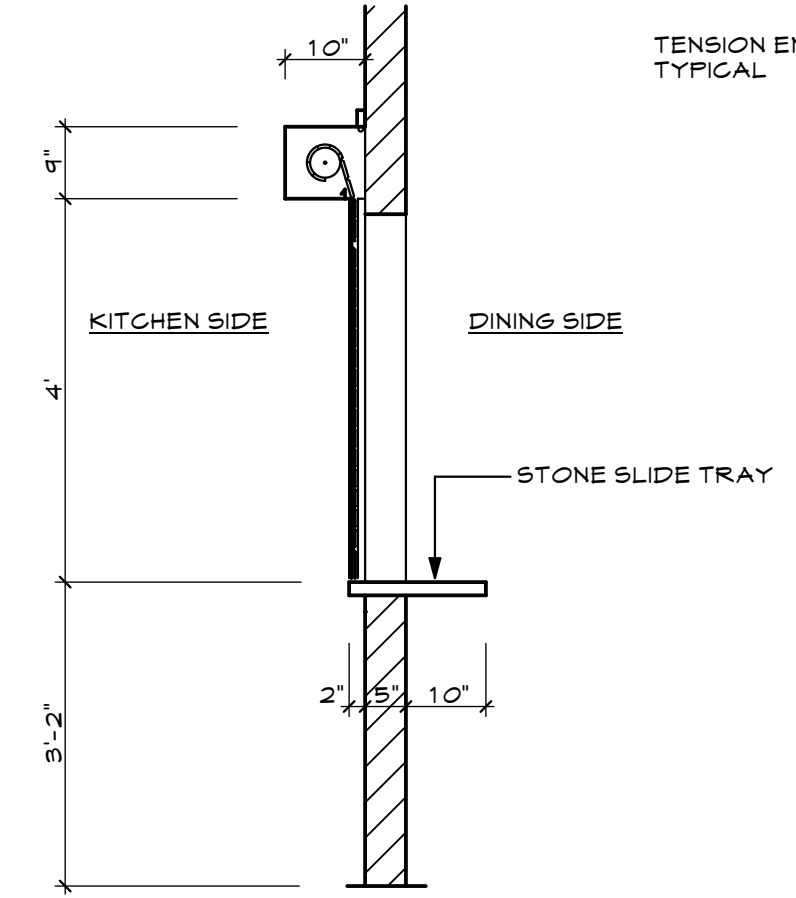


Reviewed for Code Compliance
Permitting and Inspections Department
Approved with Conditions

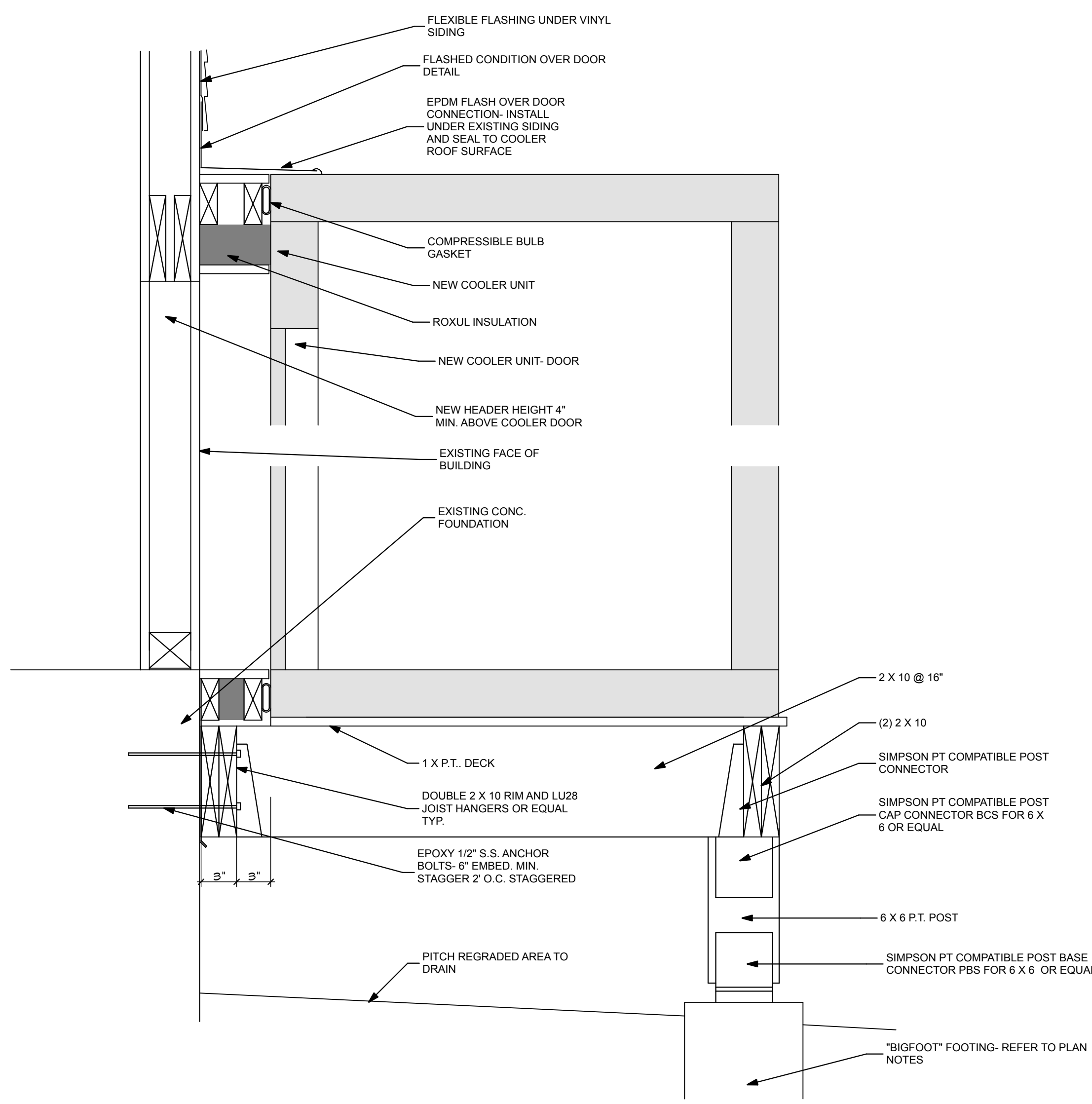
07/06/2018



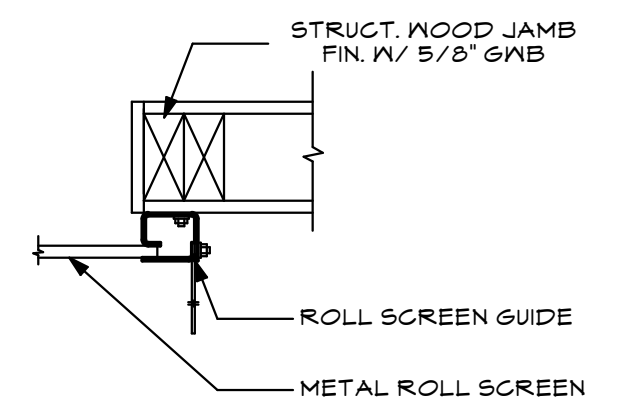
4
A6.4 **DINING ROOM SIDEBOARD**
SCALE: 1/2" = 1'-0"



1
A6.4 **COILING ROLL SCREEN ELEV.**
SCALE: 1/2" = 1'-0"

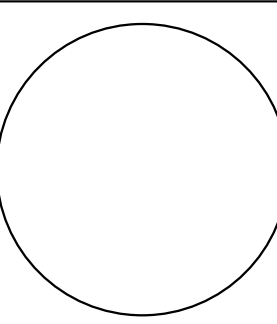


3
A6.4 **COOLER UNIT DETAIL SECTION**
SCALE: 1 1/2" = 1'-0"

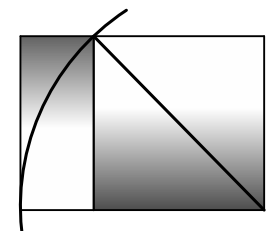


2
A6.4 **COILING ROLL SCREEN JAMB**
SCALE: 1 1/2" = 1'-0"

PINETREE RECOVERY
17 BISHOP STREET PORTLAND, MAINE 04103



**WHIPPLE
CALLENDER
ARCHITECTS**



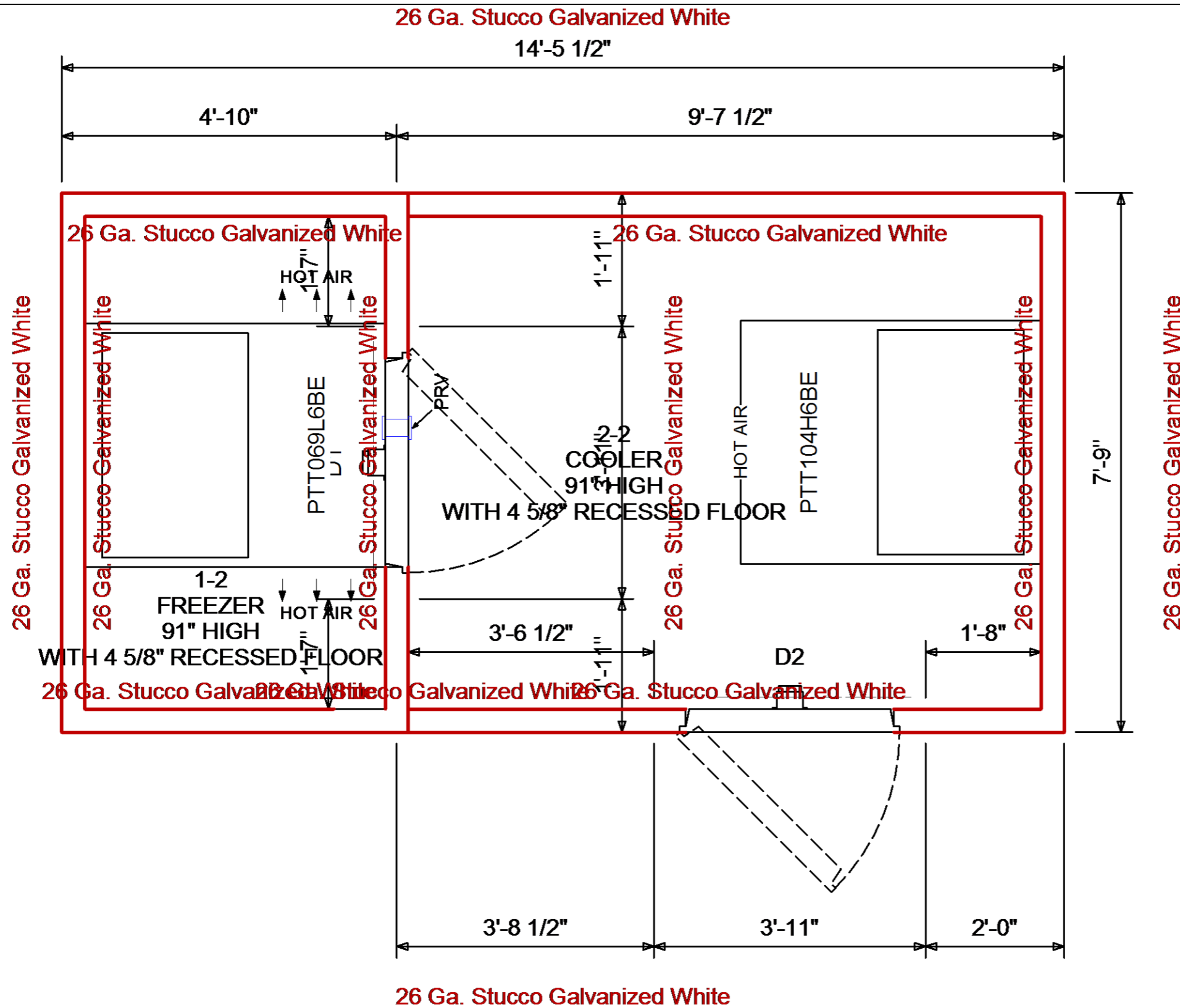
136 PLEASANT AVE.
PORTLAND, ME 04103
P 207.775.3696
F 207.775.3631
www.whipplecallender.com

DATE	DESCRIPTION
11.6.17	SITE REVISIONS
12.1.17	SITE REV. & FREEZER DELETED
2.13.18	BUILT IN DETAILS / INT. WALL REV.
3.15.18	PLAN REV.-LABEL / GRAPHIC
5.22.18	CAMERA LOC. & ELEC. SYMBOLS
4.11.18	FREESTANDING FREEZER

DATE: 5/29/18
CHECKED BY: JAD
DRAWN BY: CJC
JOB: 2017 - BISHOP
SHEET TITLE:

KITCHEN PASS THRU
DTL'S

A6.4



-SPECIFICATION-

Box Height: Freezer 7'-7" (6'-11" Interior)
Cooler 7'-7" (6'-11" Interior)
Insulation: 4" thick AK-XPS4 Extruded foam UL classified core flame spread 15, Smoke rating less than 165

Compartment 1 - Freezer

D1 - (1) Standard 36" x 76" Right hinged flush door with brushed hardware. Interior & Exterior finish: 26 Ga. Stucco Galvanized White. 36" kickplates to interior and exterior of door. Energy saving temperature regulating thermostat heater wire and heated relief vent. Heavy duty deadbolt handle latch. 75LC Modularm Multi-Monitor Controller with Temperature Probe and Door Open/Close Sensor for Coolers or Freezers Wired and Installed. 1807 11w, Vapor Proof, 120V. LED fixture. 82 Lumens /watt Angled face . Strip curtain. Requires 115vac. 2.2 amps. With third hinge, curtain, 12 x 12 heated frame & glass viewing window

Refrigeration:

- (1) 2 HP Pro3 Outdoor Top Mount Self-contained Refrig. Unit, Model PTT069L6BE, 208-230/60/1, MCA 23.8 Amps, Low Temperature, R404A, 2 years compressor and parts warranty from date of shipment within Continental USA.
- (1) Extended 3 year compressor Warranty for PTT069L6BE

Wall Panels

Interior Finish: 26 Ga. Stucco Galvanized White
Exterior Finish: 26 Ga. Stucco Galvanized White

Ceiling Panels

Interior Finish: 26 Ga. Stucco Galvanized White
Exterior Finish: 26 Ga. Stucco Galvanized White

Floor Panels

NSF Floor panel rated for 1200 LBS/ SQ. FT. .050 Smooth Aluminum Integral. Reinforced with coated 0.5" plywood underlay

Application: Hand Trucks, Dunnage Racks, Beer Kegs, Log Carts

Compartment 2 - Cooler

D2 - (1) Standard 36" x 76" Left hinged flush door with brushed hardware. Interior & Exterior finish: 26 Ga. Stucco Galvanized White. 36" kickplates to interior and exterior of door. Heavy duty deadbolt handle latch. 75LC Modularm Multi-Monitor Controller with Temperature Probe and Door Open/Close Sensor for Coolers or Freezers Wired and Installed. 1807 11w, Vapor Proof, 120V. LED fixture. 82 Lumens /watt Angled face . Strip curtain. Requires 115vac. 1 amps. With third hinge, curtain, 12 x 12 heated frame & glass viewing window



Customer Approval:

[Reviewed for Code Compliance](#)
[Permitting and Inspections Department](#)
[Approved with Conditions](#)

07/06/2018

Quote #: 18-02531 Revision: 2

Project: Pinetree Recovery

Date: 04/17/2018

Customer: Main State Builders, Inc

Page 1 of 3



-SPECIFICATION-Continued

Refrigeration:

(1) 1 1/2 HP Pro3 Outdoor Top Mount Self-contained Refrig. Unit, Model PTT104H6BE, 208-230/60/1, MCA 14.8 Amps, BTUH 11190, Medium Temperature, R404A, 2 years compressor and parts warranty from date of shipment within Continental USA.

(1) Extended 3 year compressor Warranty for PTT104H6BE

Wall Panels

Interior Finish: 26 Ga. Stucco Galvanized White
Exterior Finish: 26 Ga. Stucco Galvanized White

Ceiling Panels

Interior Finish: 26 Ga. Stucco Galvanized White
Exterior Finish: 26 Ga. Stucco Galvanized White

Floor Panels

NSF Floor panel rated for 1200 LBS/ SQ. FT.
.050 Smooth Aluminum Integral. Reinforced with coated 0.5" plywood underlay

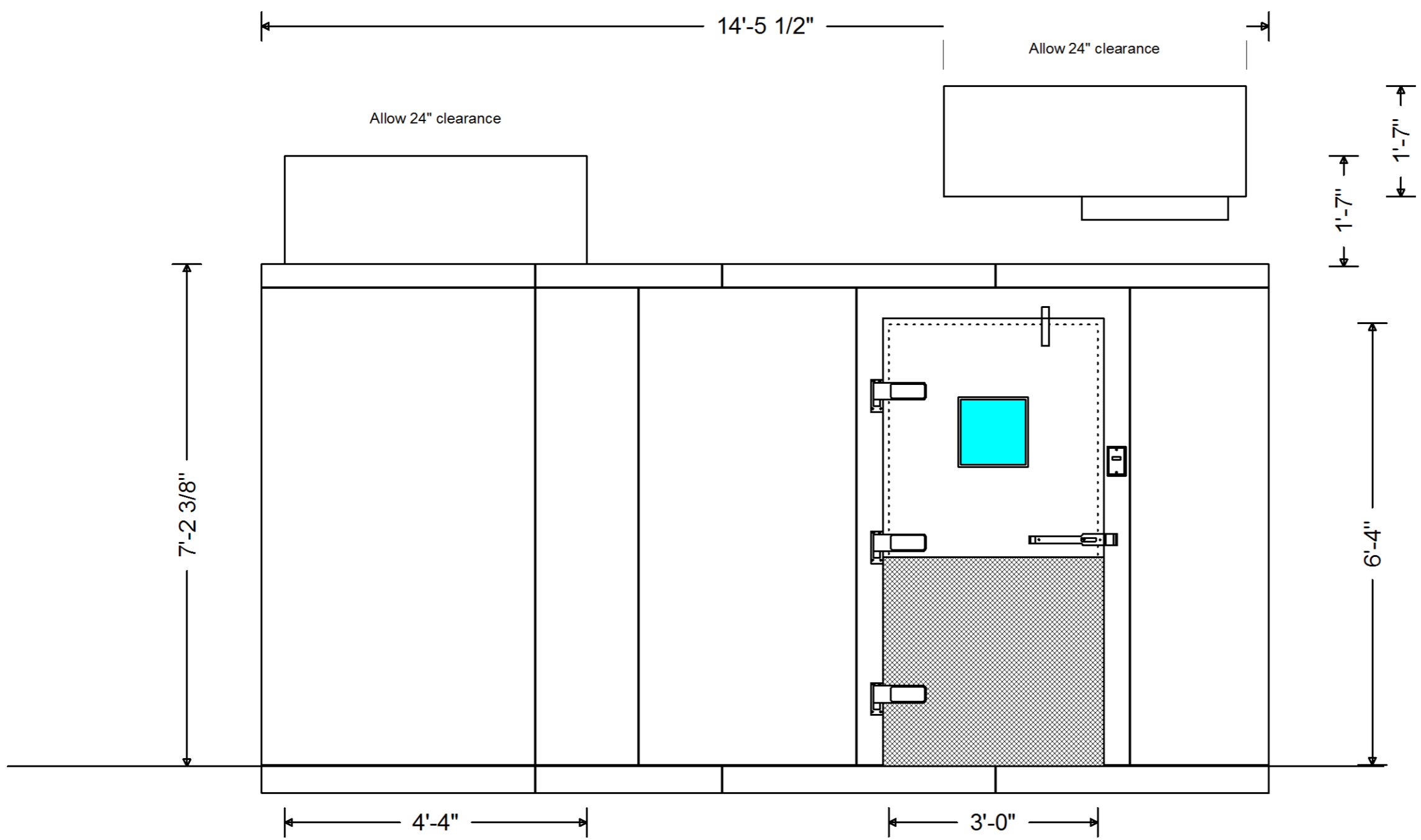
Application: Hand Trucks, Dunnage Racks, Beer Kegs, Log Carts

Accessories Shipped Loose

- (120) Rain roof membrane w/ 10 ft. long with termination bars with 1 screw every 12inch (per sq.ft.)
- (1) DOOR HOOD FROM 30" TO 42" LONG WHITE STUCCO EMBOSSED FINISH, WITH 4 TEK SCREWS (LOOSE)
- (12) OUTDOOR WALK-IN PERIMETER REINFORCEMENT FLOOR ANGLE (.050 THICK ALUMINUM) 1 1/2" X 6" X 48" EACH SECTION - SUPPLIED WITH STAINLESS STEEL TEK SCREWS, TO SECURE WALL AND FLOOR. CONCRETE ANCHORS (BY OTHERS)


Notes:

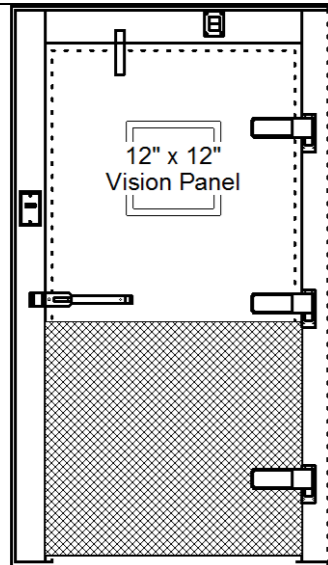
* Allow a minimum of 24" clearance above top mounted refrigeration for installation



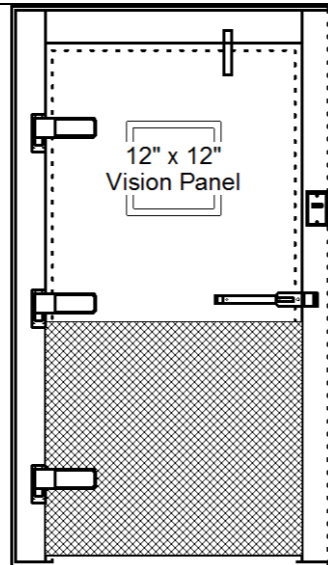
Customer Approval: [Reviewed for Code Compliance](#)
[Permitting and Inspections Department](#)
[Approved with Conditions](#)

07/06/2018

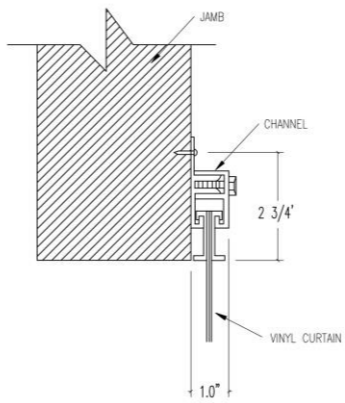
Quote #: 18-02531 Revision: 2	Project: Pinetree Recovery	Date: 04/17/2018	
Customer: Main State Builders, Inc	Page 2 of 3		



D1

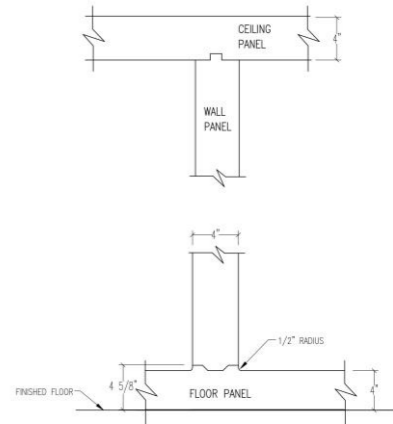


D2



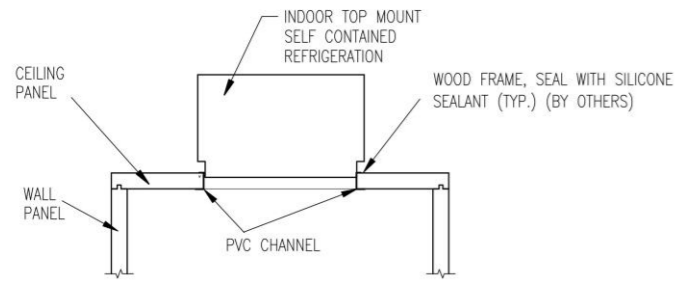
PLASTIC STRIP CURTAIN

178: PLASTIC STRIP CURTAIN FOR RETROFIT DOOR OPENING 36" X 78" (FOR COOLER OR FREEZER) KASON PART NUMBER:402LA6063878



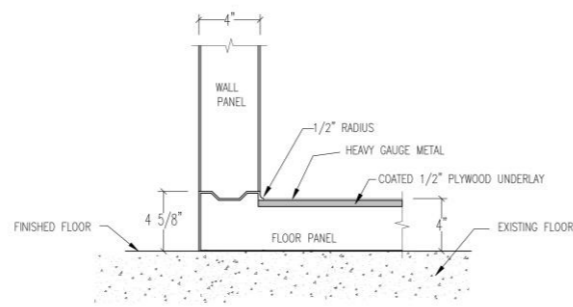
STANDARD PARTITION WALL

20012: STANDARD PARTITION WALL UPCHARGE, WITH FLOOR (PER LINEAR FT OF PARTITION WALL LENGTH)



TOP MOUNT SELF CONTAINED

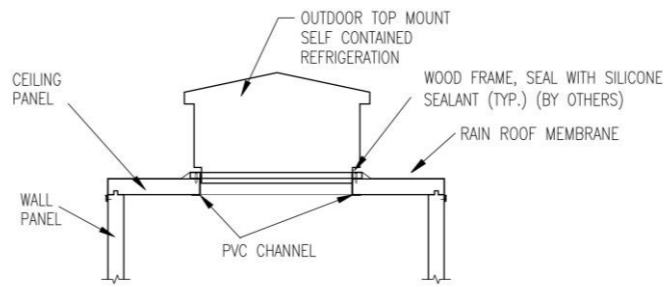
20027: TOP MOUNT SELF CONTAINED INDOOR CEILING PANEL FRAMED CUT-OUT



FLOOR & WALL DETAIL (1200 LBS / FT² DIST. LOAD)

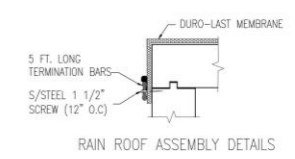
2C: NSF FLOOR .050 SMOOTH ALUMINUM INTEGRAL, REINFORCED WITH COATED 1/2" PLYWOOD UNDERLAY, RATED FOR 1200 LBS/ SQ FT. (APPLICATION:HAND TRUCKS, DUNNAGE RACKS, LOG CARTS)

NOTE: IMPORTANT REQUIREMENT FOR INSTALLATION IS TO HAVE A PERFECTLY LEVEL FLOOR.

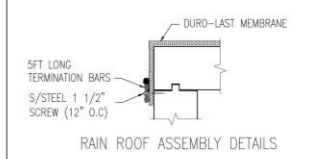


TOP MOUNT SELF CONTAINED WITH EXTERIOR WOOD FRAME

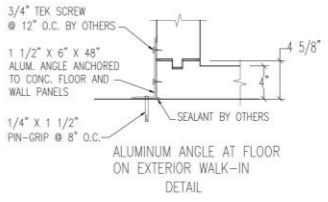
338: TOP MOUNT SELF CONTAINED OUTDOOR CEILING PANEL FRAMED CUT-OUT WITH EXTERIOR WOOD FRAME.



RAIN ROOF ASSEMBLY DETAILS



RAIN ROOF ASSEMBLY DETAILS



RAIN ROOF MEMBRANE

9462: RAIN ROOF MEMBRANE W/ 10 FT. LONG WITH TERMINATION BARS WITH 1 SCREW EVERY 12 INCH (PER SQ.FT.)



Reviewed for Code Compliance
Permitting and Inspections Department
Approved with Conditions

07/06/2018

Quote #: 18-02531 Revision: 2

Project: Pinetree Recovery

Date: 04/17/2018

Customer:Main State Builders,Inc

Page 3 of 3





Reviewed for Code Compliance
Permitting and Inspections Department
Approved with Conditions
07/06/2018

SNOW CLEARANCE NOTES

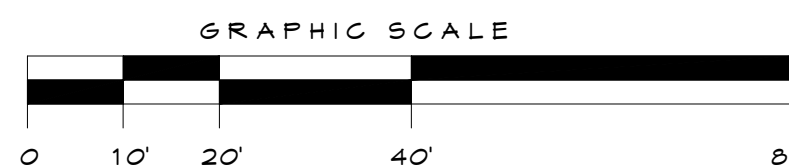
1. SNOW MAY BE STORED WITHIN THE TEMPORARY SNOW STORAGE AREAS ONLY.
2. THE SNOW CONTRACTOR SHALL USE SALT OR CHLORIDE SUBSTITUTE TO DEICE THE PARKING LOT.
3. THE OWNER IS RESPONSIBLE FOR SNOW REMOVAL BEING UNDERTAKEN IN A TIMELY FASHION.

CITY OF PORTLAND SITE PLAN AND SUBDIVISION NOTES

1. LANDSCAPING SHALL MEET THE "ARBORICULTURAL SPECIFICATIONS AND STANDARDS OF PRACTICE AND LANDSCAPE GUIDELINES" OF THE CITY OF PORTLAND TECHNICAL AND DESIGN STANDARDS AND GUIDELINES.
2. THE ENTIRE SITE SHALL BE RENOVATED AND MAINTAINED AS DEPICTED ON THE SITE PLAN. APPROVAL OF THE PLANNING AUTHORITY OR PLANNING BOARD SHALL BE REQUIRED FOR ANY ALTERATION TO OR DEVIATION FROM THE APPROVED SITE PLAN, INCLUDING, WITHOUT LIMITATION: TOPOGRAPHY, DRAINAGE, LANDSCAPING, RETENTION OF WOODED OR LAWN AREAS, ACCESS, SIZE, LOCATION, AND SURFACING OF PARKING AREAS AND LOCATION AND SIZE OF BUILDINGS.
3. ALL EROSION CONTROL MEASURES SHALL BE CONSTRUCTED AND MAINTAINED IN ACCORDANCE WITH THE MAINE EROSION AND SEDIMENT CONTROL BMPs PUBLISHED BY THE BUREAU OF LAND AND QUALITY, MAINE DEPARTMENT OF ENVIRONMENTAL PROTECTION, MARCH 2003.
4. ALL EROSION CONTROL MEASURES SHALL BE INSTALLED PRIOR TO ANY SITE EXCAVATION OR REGRADING.
5. ALL DISTURBED AREAS ON THE SITE NOT COVERED BY BUILDINGS OR PAVED AREAS SHALL BE STABILIZED WITH LOAM AND SEED OR OTHER METHODS AS REQUIRED BY BEST MANAGEMENT PRACTICES (SEE ABOVE).
6. PRIOR TO CONSTRUCTION, A PRECONSTRUCTION MEETING SHALL BE HELD AT THE PROJECT SITE WITH THE CONTRACTOR, DEVELOPMENT REVIEW COORDINATOR, PUBLIC WORKS REPRESENTATIVE AND OWNER TO REVIEW THE CONSTRUCTION SCHEDULE AND CRITICAL ASPECTS OF THE SITE WORK AT THAT TIME. THE SITE-BUILDING CONTRACTOR SHALL PROVIDE THREE (3) COPIES OF A DETAILED CONSTRUCTION SCHEDULE TO THE ATTENDING CITY REPRESENTATIVE. IT SHALL BE THE CONTRACTOR'S RESPONSIBILITY TO ARRANGE A MUTUALLY AGREEABLE TIME FOR THE PRECONSTRUCTION MEETING.
7. EXISTING VEGETATION SHALL BE CONSERVED IN AREAS SHOWN ON THIS SITE. FENCING OR OTHER PROTECTIVE BARRIERS SHALL BE ERRECTED OUTSIDE THE DRIP-LINE OF INDIVIDUAL GROUPINGS OF TREES DESIGNATED FOR PRESERVATION PRIOR TO THE ONSET OF CONSTRUCTION. REGRADING SHALL NOT TAKE PLACE WITHIN THE DRIP-LINE OF TREES DESIGNATED FOR PRESERVATION. NO STORAGE OR CONSTRUCTION MATERIALS SHALL BE PERMITTED WITHIN THE DRIP-LINE OF TREES TO BE PRESERVED.

LEGEND

- ELECTRIC METER
- SIGN
- DECIDUOUS TREE
- CURB
- PROPERTY LINE



GENERAL NOTES:

1. PLAN BASED ON OWEN HASKELLS SURVEY 12 & #17 BISHOP STREET, PORTLAND, MAINE DATED 8.2.17
2. EXISTING CONDITIONS TO REMAIN UNLESS NOTED OTHERWISE
3. SWEEP MATERIAL EXCAVATED FOR DUMPSTER PAD THAT FALLS ON PAVED AREAS, PARTICULARLY IN THE PUBLIC WAY.
4. EXISTING CROSSWALK SIGNAGE TO BE REPLACED WITH NEW MUTCD COMPLIANT CROSSWALK SIGNAGE

WAIVER REQUESTS-

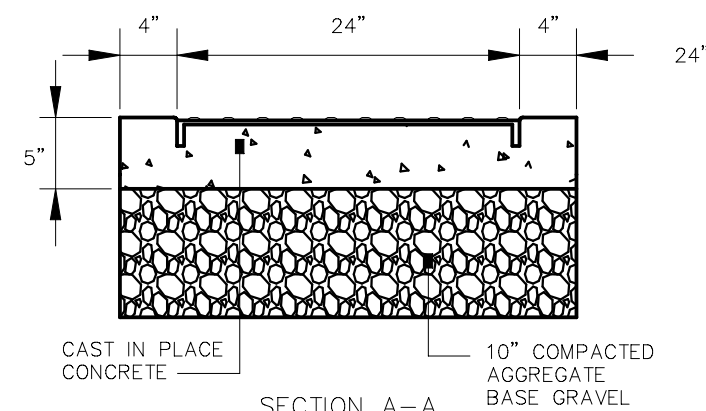
2. 20' WIDTH OF PARKING AISLE

PARKING REQUIREMENTS FOR 40 BEDS AND STAFF-

- 12 STAFF PER SHIFT / 1 PER - (12) SPACES
- 40 MAX. BEDS / 1 PER 5 - (8) SPACES
- TOTAL REQ. PARKING SPACES- 20, LESS THAN THE 25 AVAILABLE

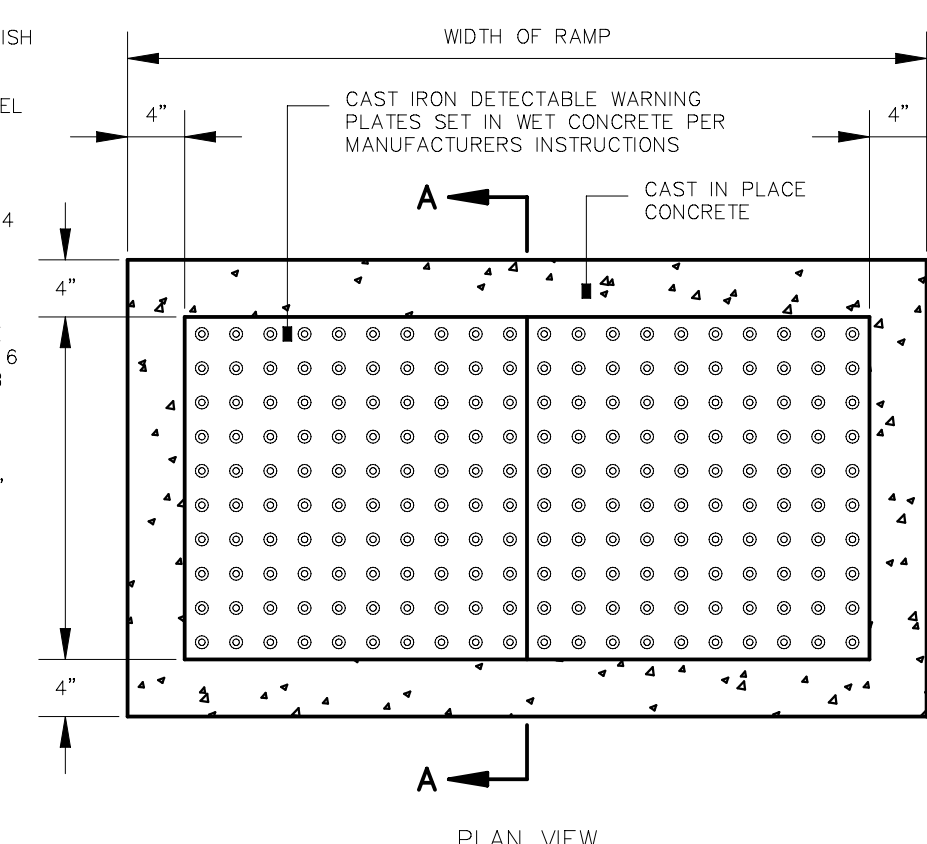
NOTES:

1. ALL DETECTABLE WARNING PLATES SHALL BE UNCOATED CAST IRON. FOLLOW MANUFACTURER'S INSTRUCTIONS FOR INSTALLATION.
2. CAST IN PLACE CONCRETE SHALL MEET SPECIFICATIONS FOR M40 CLASS A STRUCTURAL CONCRETE, MINIMUM COMPRESSIVE STRENGTH 4,000 PSI. THE EXPOSED CONCRETE BORDER SHALL RECEIVE A UNIFORM BROOM FINISH PERPENDICULAR TO THE FLOW OF PEDESTRIAN TRAFFIC.
3. TRUNCATED DOMES SHALL BE ALIGNED IN ROWS, PARALLEL AND PERPENDICULAR TO THE PREDOMINANT DIRECTION OF TRAVEL. TRUNCATED DOME BRICKS AND GRANITE PAVERS ARE NOT ALLOWED.
4. SIZE: THE DETECTABLE WARNING PLATES SHALL EXTEND 24 INCHES MINIMUM IN THE DIRECTION OF TRAVEL AND THE FULL WIDTH OF THE CURB RAMP, LANDING, OR BLENDED TRANSITION TO THE STREET.
5. ORIENTATION: THE DETECTABLE WARNING PANEL SHALL BE LOCATED SO THAT THE EDGE NEAREST THE CURB LINE IS 6 INCHES MINIMUM AND 8 INCHES MAXIMUM FROM THE CURB LINE. THE PANEL SHALL BE ORIENTED TO THE DIRECTION OF TRAVEL AS IDENTIFIED BY THE POINT OF EGRESS.



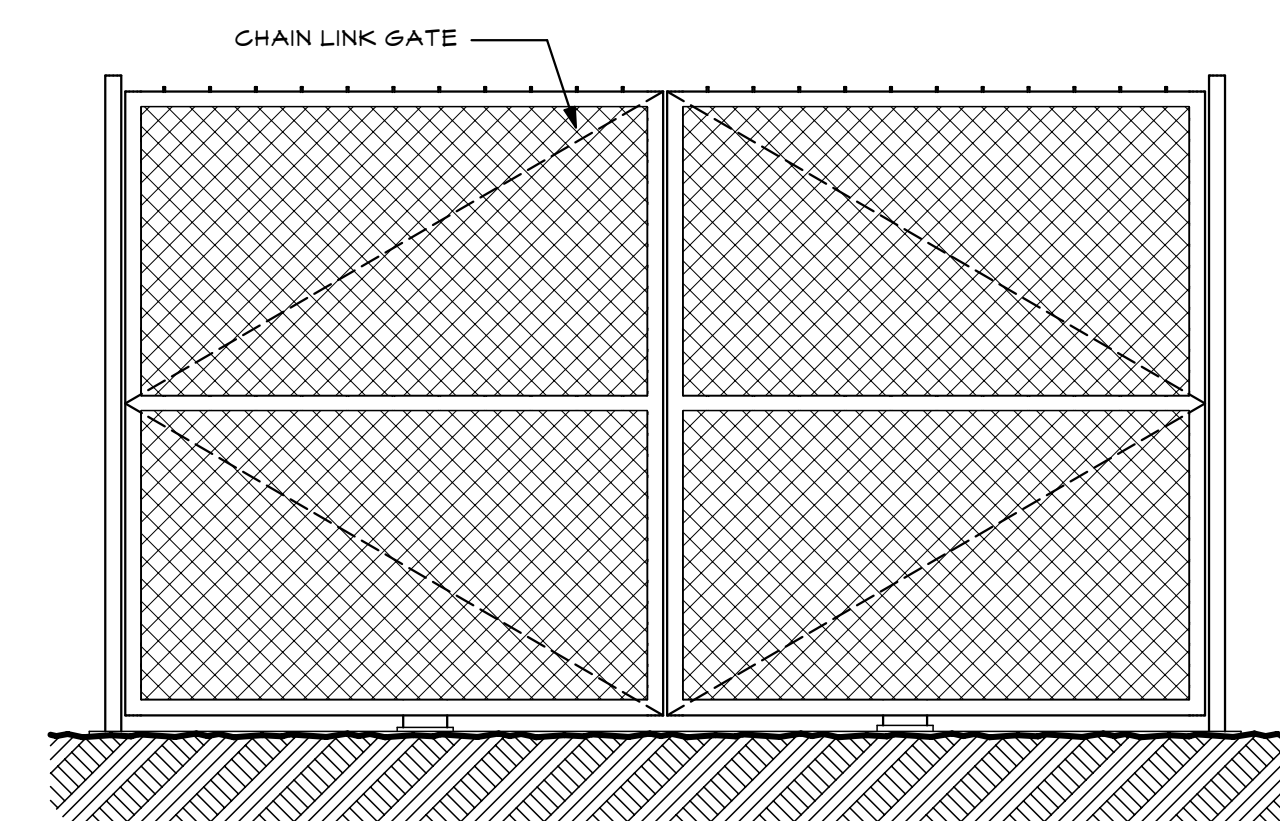
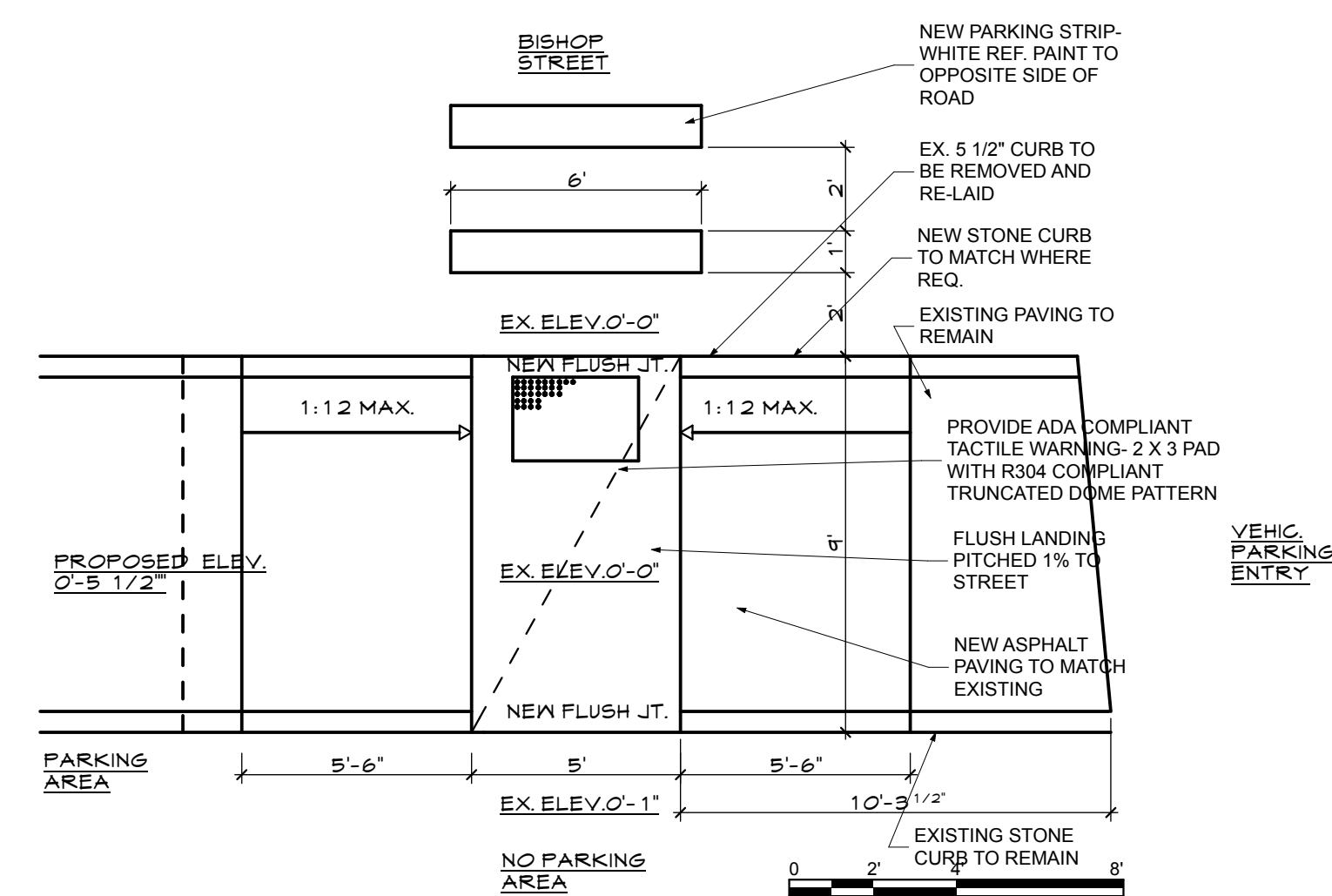
3 SIDEWALK RAMP DETECTABLE WARNING PANEL

NOT TO SCALE



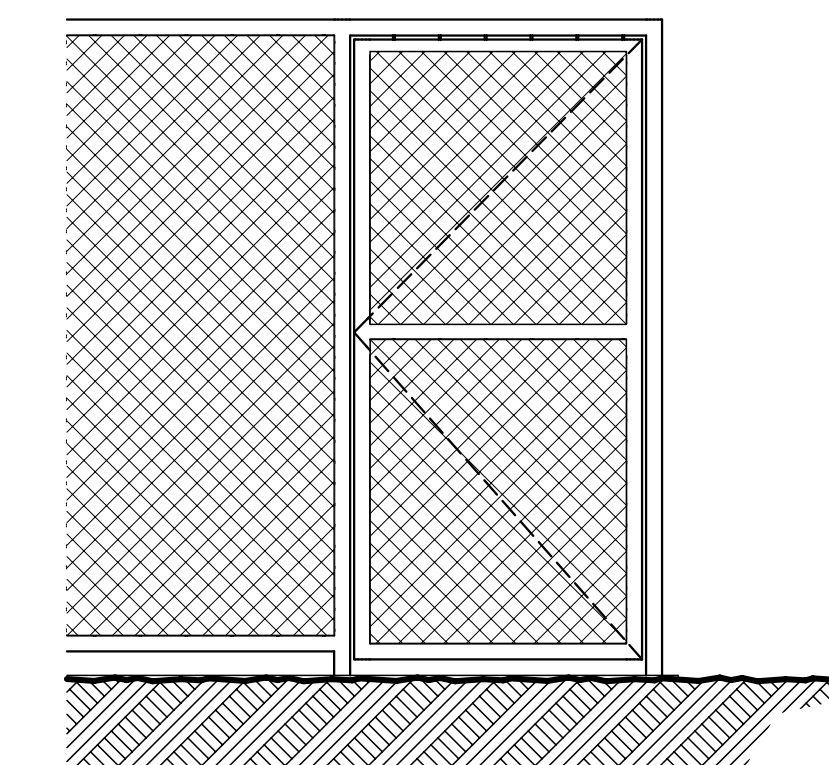
4 ADA CURB CUT DETAIL

SCALE: 1/4" = 1'-0"



5 DUMPSTER ENCLOSURE ELEV.

SCALE: 1/2" = 1'-0"



6 ELEV. @ MAN DOOR

SCALE: 1/2" = 1'-0"

THIS DRAWING IS AN INSTRUMENT OF SERVICE AND SHALL REMAIN THE PROPERTY OF WHIPPLE CALLENDER ARCHITECTS. IT SHALL NOT BE USED FOR ANY OTHER PURPOSE THAT FOR WHICH IT IS SPECIFICALLY FURNISHED.

PINETREE RECOVERY
PORTLAND, MAINE 04103

WHIPPLE CALLENDER ARCHITECTS

136 PLEASANT AVE.
PORTLAND, ME 04103
P 207.775.3696
F 207.775.3631
www.whipplecallender.com

DATE	DESCRIPTION
11.16.17	SITE REVISIONS
12.1.17	SITE REV. # FREEZER DELETED
2.13.18	BUILT IN DETAILS / INT. WALL REV.
3.15.18	PLAN REV.-LABEL / GRAPHIC
5.22.18	CAMERA LOC. & ELEC. SYMBOLS
4.11.18	FREESTANDING FREEZER

DATE: 5/24/18

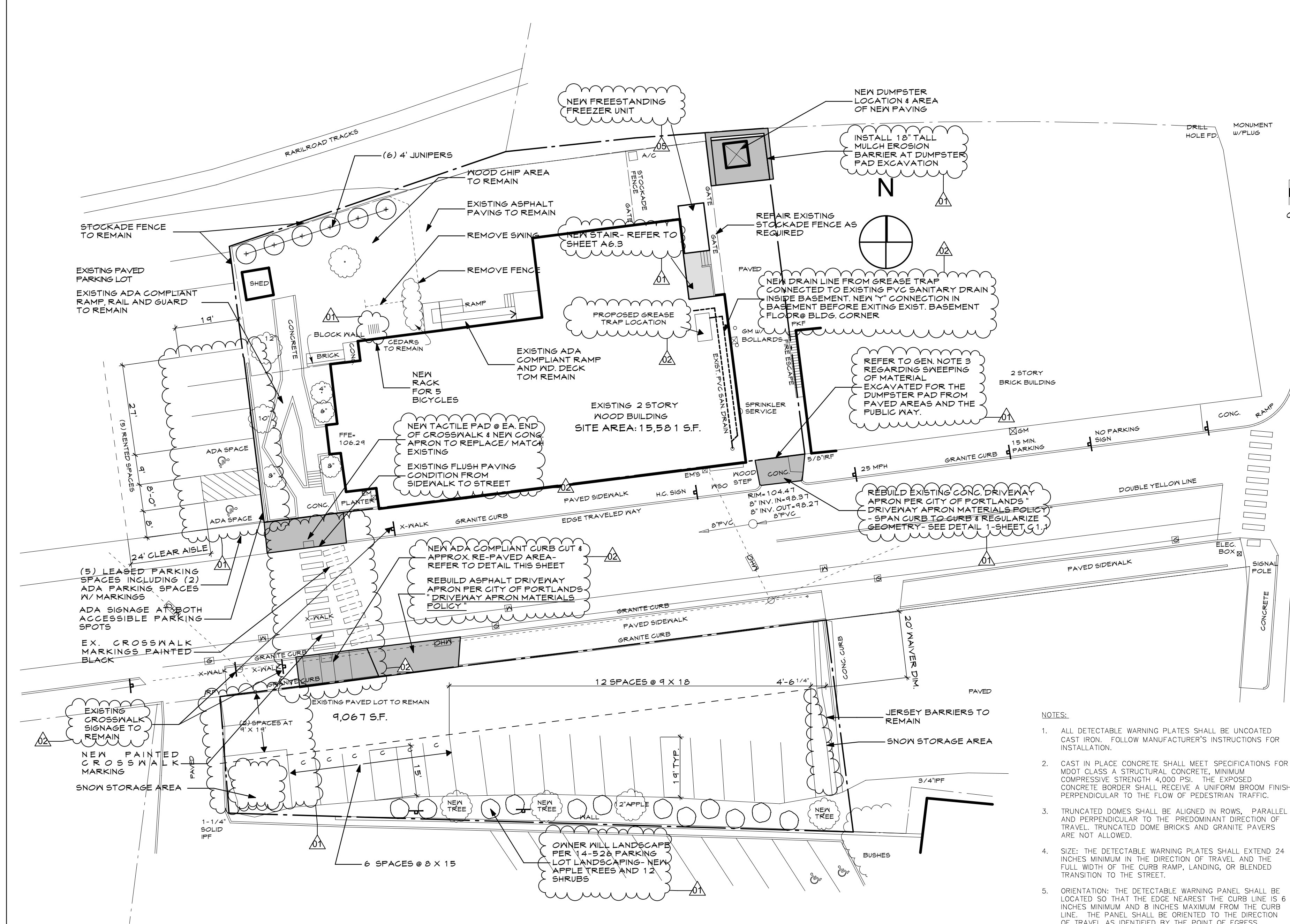
CHECKED BY: JAD

DRAWN BY: CJC

JOB: 2017 - BISHOP

SHEET TITLE: PROPOSED SITE PLAN

C1.2



1 DUMPSTER ENCLOSURE PLAN

SCALE: 1/2" = 1'-0"

2 DUMPSTER SECTION DETAIL

SCALE: 1/2" = 1'-0"

