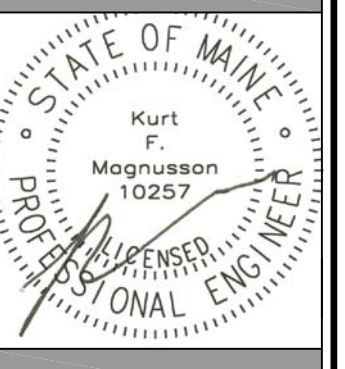


17 BISHOP STREET
 PORTLAND, MAINE



WHIPPLE | CALLENDER ARCHITECTS

136 PLEASANT AVE.
 PORTLAND, ME 04103
 P 207.775.2696
 F 207.775.3631
 www.whipplecallender.com

DATE	DESCRIPTION
12/20/17	FOR CONSTRUCTION

MECHANICAL DEMOLITION FIRST FLOOR

REMOVE ALL DUCTWORK, REGISTERS AND GRILLES THAT ARE SHOWN WITH HEAVY LINES

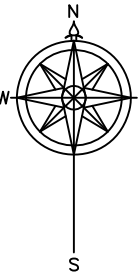
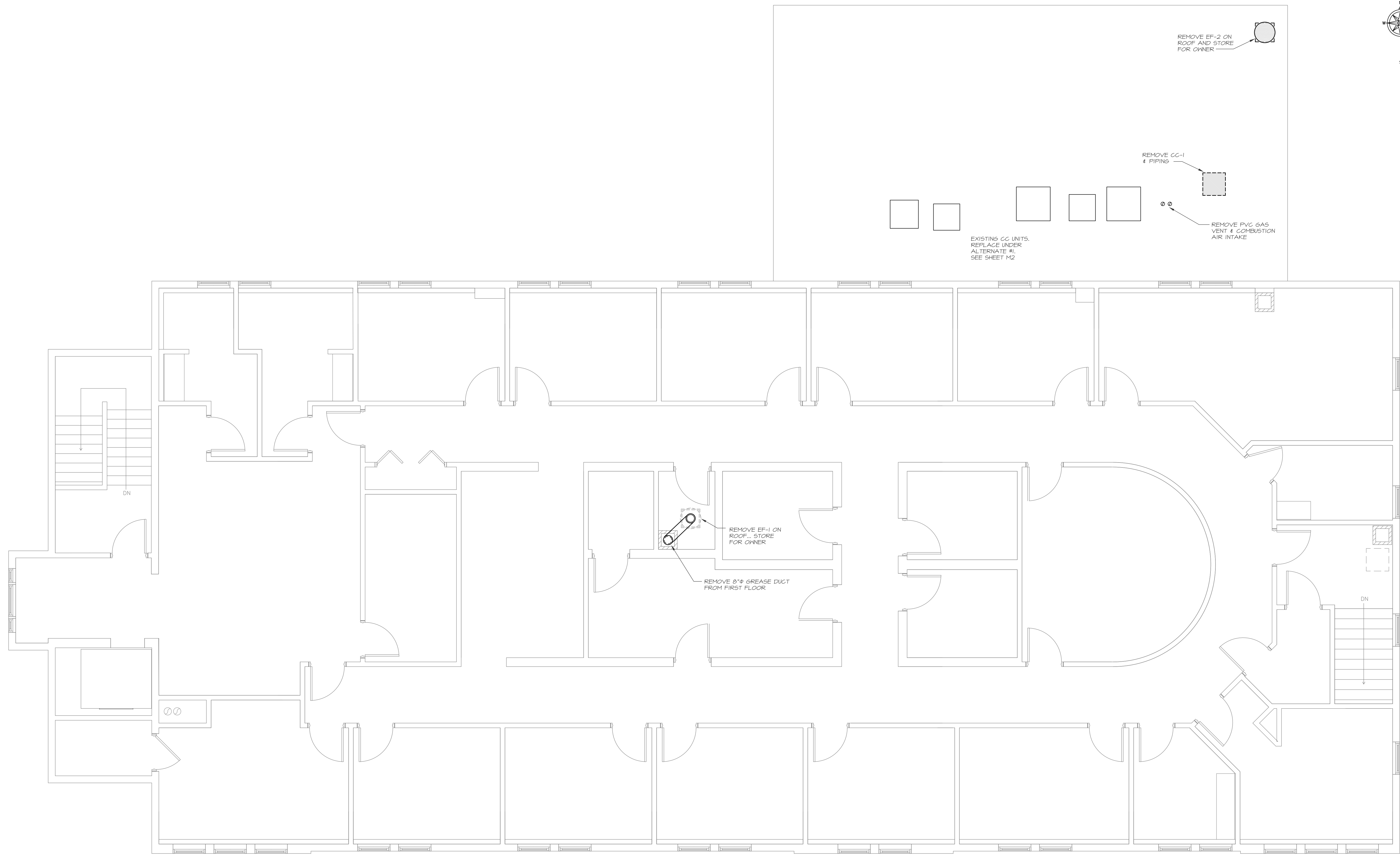
PATCH & SEAL DUCTWORK WHERE BRANCH DUCTS ARE REMOVED.

STORE ALL REMOVED DIFFUSERS, REGISTERS AND GRILLES FOR RE-USE. SEE SHEET M1

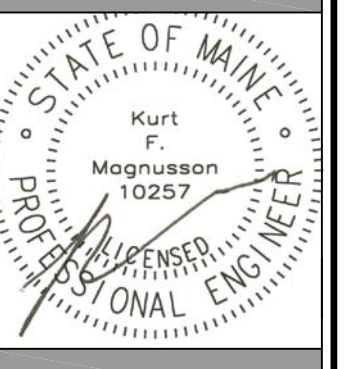


MECHANICAL SYSTEMS ENGINEERS
 ROYAL RIVER CENTER, UNIT 10B
 10 FOREST FALLS DRIVE, YARMOUTH, MAINE 04096
 (207) 846-1441
 FACEBOOK: MECHANICAL SYSTEMS ENGINEERS
 Project #1733
 © COPYRIGHT 2017





17 BISHOP STREET
PORTLAND, MAINE



WHIPPLE | CALLENDER ARCHITECTS
136 PLEASANT AVE.
PORTLAND, ME 04103
P 207.775.2696
F 207.775.3631
www.whipplecalender.com

DATE	DESCRIPTION
11/16/16	FOR CONSTRUCTION

DATE: 12/20/17
CHECKED BY: K.F.M.
DRAWN BY: R.E.M.
JOB: 2017-BISHOP

SHEET TITLE:
MECHANICAL DEMOLITION SECOND FL'R

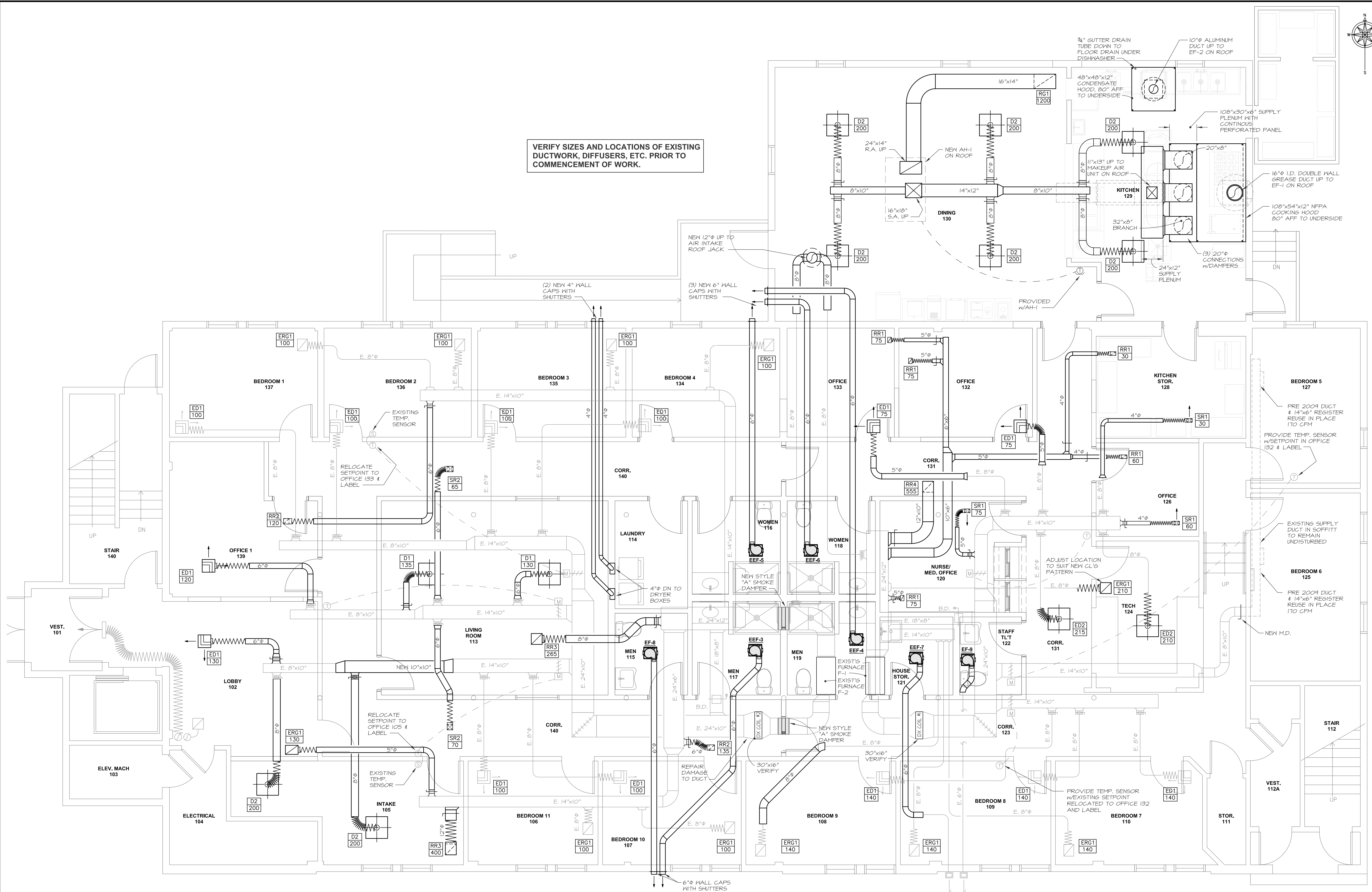


MECHANICAL SYSTEMS ENGINEERS
ROYAL RIVER CENTER, UNIT 10B
10 FOREST FALLS DRIVE, YARMOUTH, MAINE 04096
(207) 846-1441
FACEBOOK: MECHANICAL SYSTEMS ENGINEERS
Project #1733
© COPYRIGHT 2017

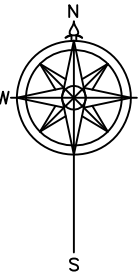


MD2

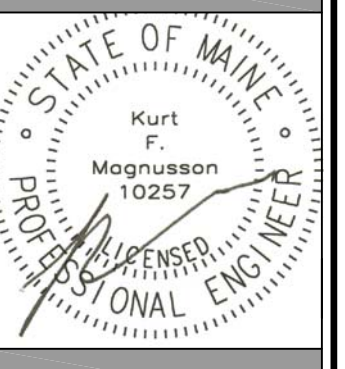
December 18, 2017, 11:48 am
X:\Projects\1733 17 Bishop Street Drawings\1733 MI-M2.dwg



VERIFY SIZES AND LOCATIONS OF EXISTING DUCTWORK, DIFFUSERS, ETC. PRIOR TO COMMENCEMENT OF WORK.



17 BISHOP STREET
PORTLAND, MAINE
17 BISHOP STREET



WHIPPLE | CALLENDER ARCHITECTS

136 PLEASANT AVE.
PORTLAND, ME 04103
P 207.775.2696
F 207.775.3631
www.whipplecallender.com

MARK	DATE	DESCRIPTION
	11/16/16	FOR CONSTRUCTION

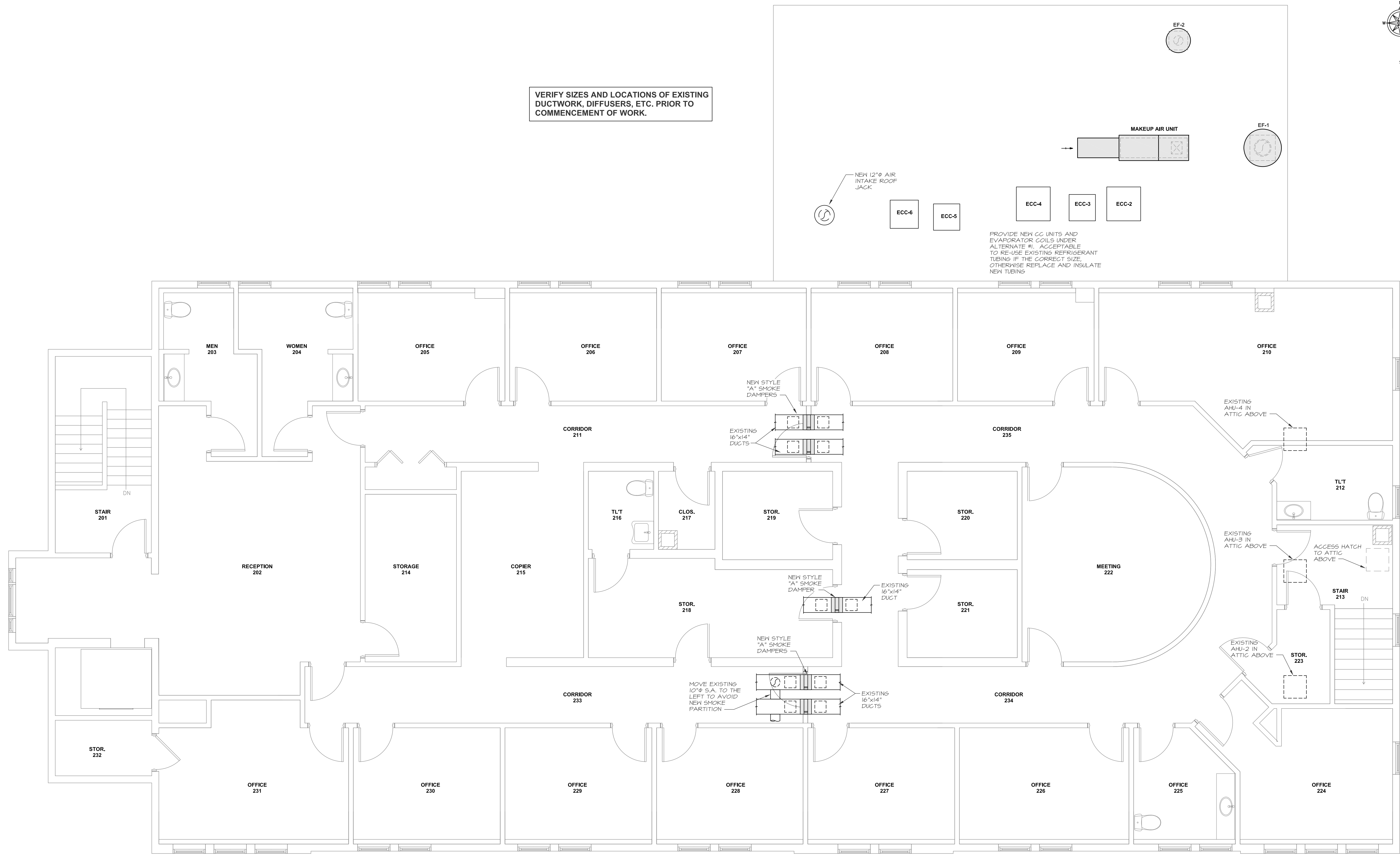
DATE: 12/20/17
CHECKED BY: K.F.M.
DRAWN BY: R.E.M.

JOB: 2017-BISHOP
SHEET TITLE: MECHANICAL FLOOR PLAN FIRST FLOOR

MECHANICAL SYSTEMS ENGINEERS
ROYAL RIVER CENTER, UNIT 10B
10 FOREST FALLS DRIVE, YARMOUTH, MAINE 04096
(207) 846-1441
FACEBOOK: MECHANICAL SYSTEMS ENGINEERS
Project #1733
© COPYRIGHT 2017



December 18, 2017, 11:48 am
 X:\Projects\1733 17 Bishop Street Drawings\1733 M1-M2.dwg



VERIFY SIZES AND LOCATIONS OF EXISTING DUCTWORK, DIFFUSERS, ETC. PRIOR TO COMMENCEMENT OF WORK.

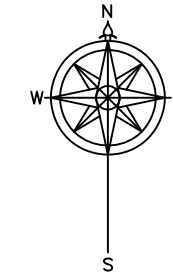
PROVIDE NEW CG UNITS AND EVAPORATOR COILS UNDER ALTERNATE #1. ACCEPTABLE TO RE-USE EXISTING REFRIGERANT TUBING IF THE CORRECT SIZE, OTHERWISE REPLACE AND INSULATE NEW TUBING



MECHANICAL SYSTEMS ENGINEERS
 ROYAL RIVER CENTER, UNIT 10B
 10 FOREST FALLS DRIVE, YARMOUTH, MAINE 04096
 (207) 846-1441
 FACEBOOK: MECHANICAL SYSTEMS ENGINEERS
 Project #1733
 © COPYRIGHT 2017



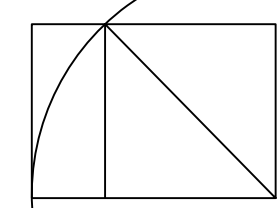
M2



17 BISHOP STREET
 PORTLAND, MAINE



WHIPPLE | CALLENDER ARCHITECTS



136 PLEASANT AVE.
 PORTLAND, ME 04103
 P 207.775.2696
 F 207.775.3631
 www.whipplecallender.com

DATE	DESCRIPTION
11/15/16	FOR CONSTRUCTION

DATE: 12/20/17
 CHECKED BY: K.F.M.
 DRAWN BY: R.E.M.
 JOB: 2017-BISHOP

SHEET TITLE:
MECHANICAL FLOOR PLAN SECOND FL'R

