

DATE	DESCRIPTION

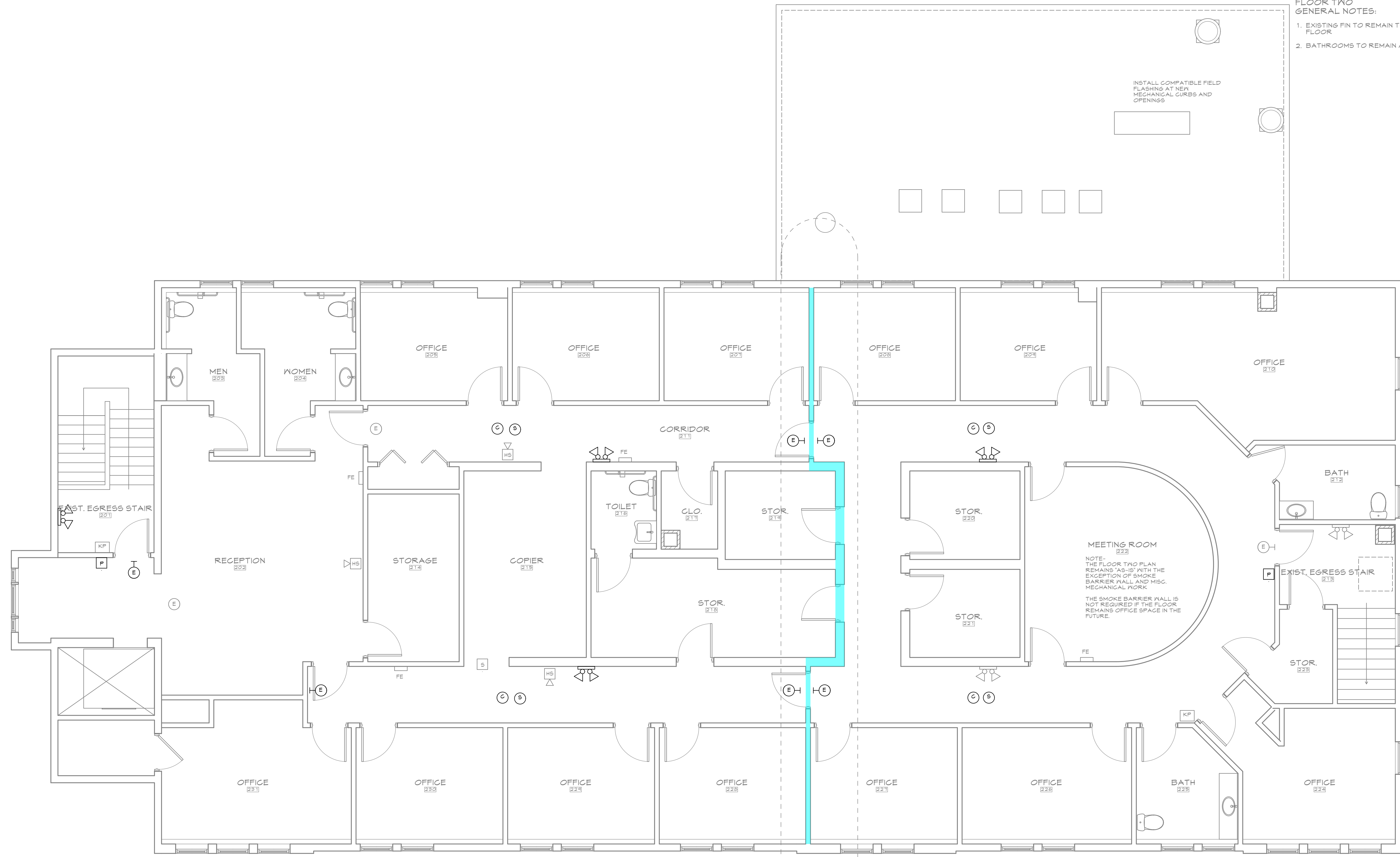
DATE: 12/14/17
 CHECKED BY: JAD
 DRAWN BY: CJC
 JOB: 2017-BISHOP
 SHEET TITLE:

SECOND FLOOR LIFE SAFETY PLAN

FLOOR TWO GENERAL NOTES:
 1. EXISTING FIN TO REMAIN THIS FLOOR.
 2. BATHROOMS TO REMAIN AS IS

INSTALL COMPATIBLE FIELD FLASHING AT NEW MECHANICAL CURBS AND OPENINGS

MEETING ROOM 223
 NOTE - THE FLOOR TWO PLAN REMAINS "AS-IS" WITH THE EXCEPTION OF SMOKE BARRIER WALL AND MISC. MECHANICAL WORK
 THE SMOKE BARRIER WALL IS NOT REQUIRED IF THE FLOOR REMAINS OFFICE SPACE IN THE FUTURE.



1 SECOND FLOOR LIFE SAFETY PLAN
 SCALE: 1/4" = 1'-0"

- LIFE SAFETY LEGEND
 NOTE: LIGHT GREY INDICATES EXISTING FIXTURE
- LOCKING SYSTEM KEYPAD
 - FIRE ALARM PULL STATION
 - EXIT SIGN
 - STROBE
 - EXIT SIGN WITH TRAVEL DISTANCE
 - HORN STROBE
 - EMERGENCY LIGHT
 - HORN STROBE
 - SMOKE DETECTOR
 - FIRE EXTINGUISHER
 - CARBON MONOXIDE DETECTOR
 - CARBON MONOXIDE DETECTOR

