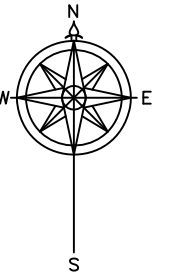
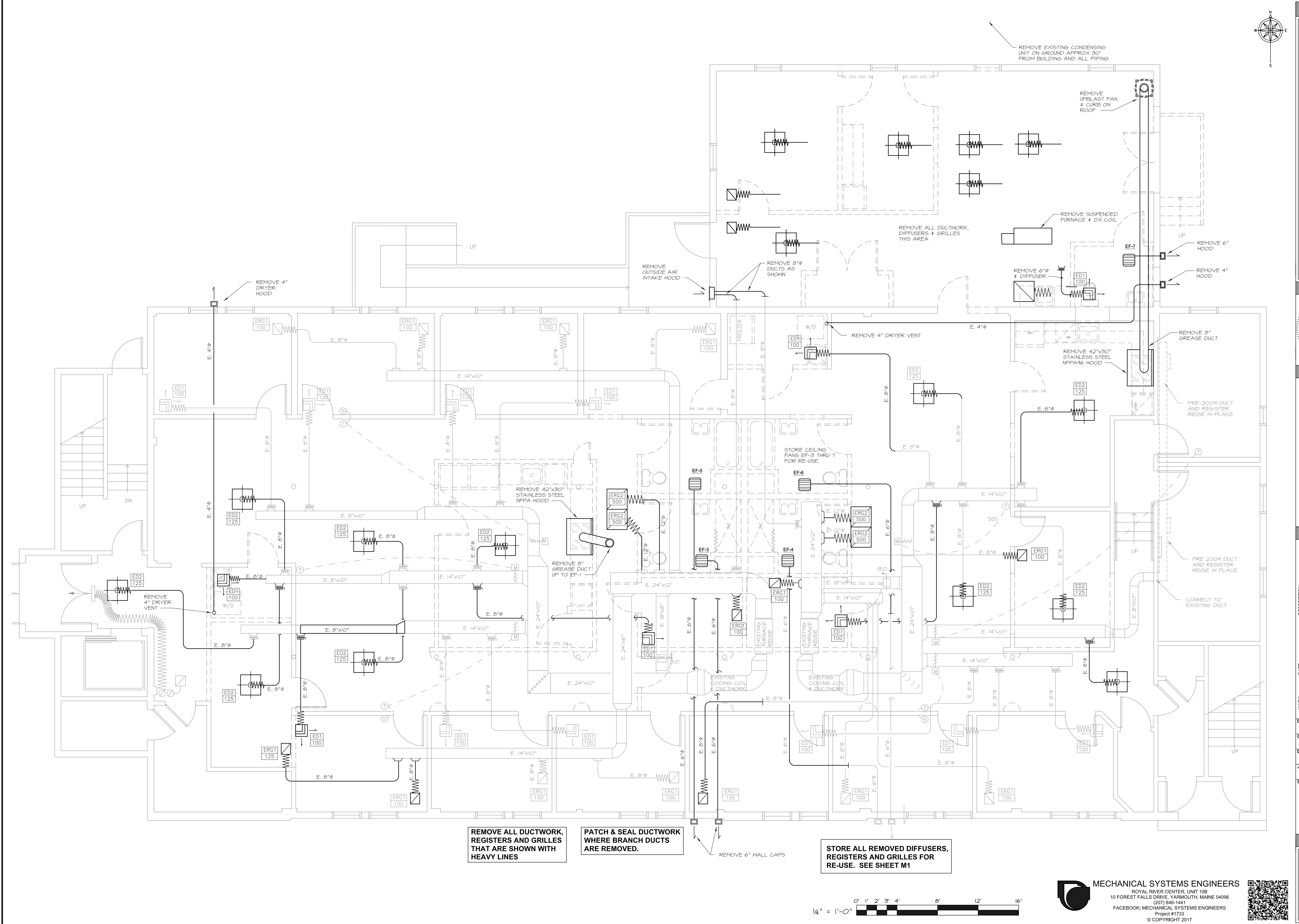
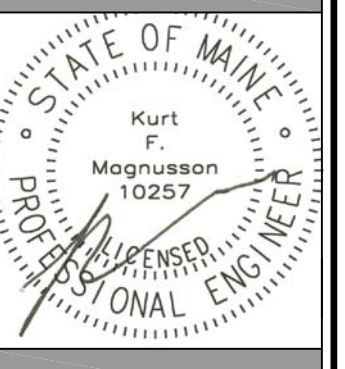


December 18, 2017, 11:50 am
X:\Projects\1733 17 Bishop Street Drawings\1733 MD1-M02.dwg



17 BISHOP STREET
 PORTLAND, MAINE
 17 BISHOP STREET



WHIPPLE |
 CALLENDER
 ARCHITECTS
 136 PLEASANT AVE.
 PORTLAND, ME 04103
 P 207.775.2696
 F 207.775.3631
 www.whipplecallender.com

DATE	DESCRIPTION
12/20/17	FOR CONSTRUCTION

CHECKED BY: K.F.M.
 DRAWN BY: R.E.M.
 JOB: 2017-BISHOP
 SHEET TITLE: MECHANICAL DEMOLITION FIRST FLOOR

REMOVE ALL DUCTWORK, REGISTERS AND GRILLES THAT ARE SHOWN WITH HEAVY LINES

PATCH & SEAL DUCTWORK WHERE BRANCH DUCTS ARE REMOVED.

STORE ALL REMOVED DIFFUSERS, REGISTERS AND GRILLES FOR RE-USE. SEE SHEET M1



MECHANICAL SYSTEMS ENGINEERS
 ROYAL RIVER CENTER, UNIT 10B
 10 FOREST FALLS DRIVE, YARMOUTH, MAINE 04096
 (207) 846-1441
 FACEBOOK: MECHANICAL SYSTEMS ENGINEERS
 Project #1733
 © COPYRIGHT 2017



MDI