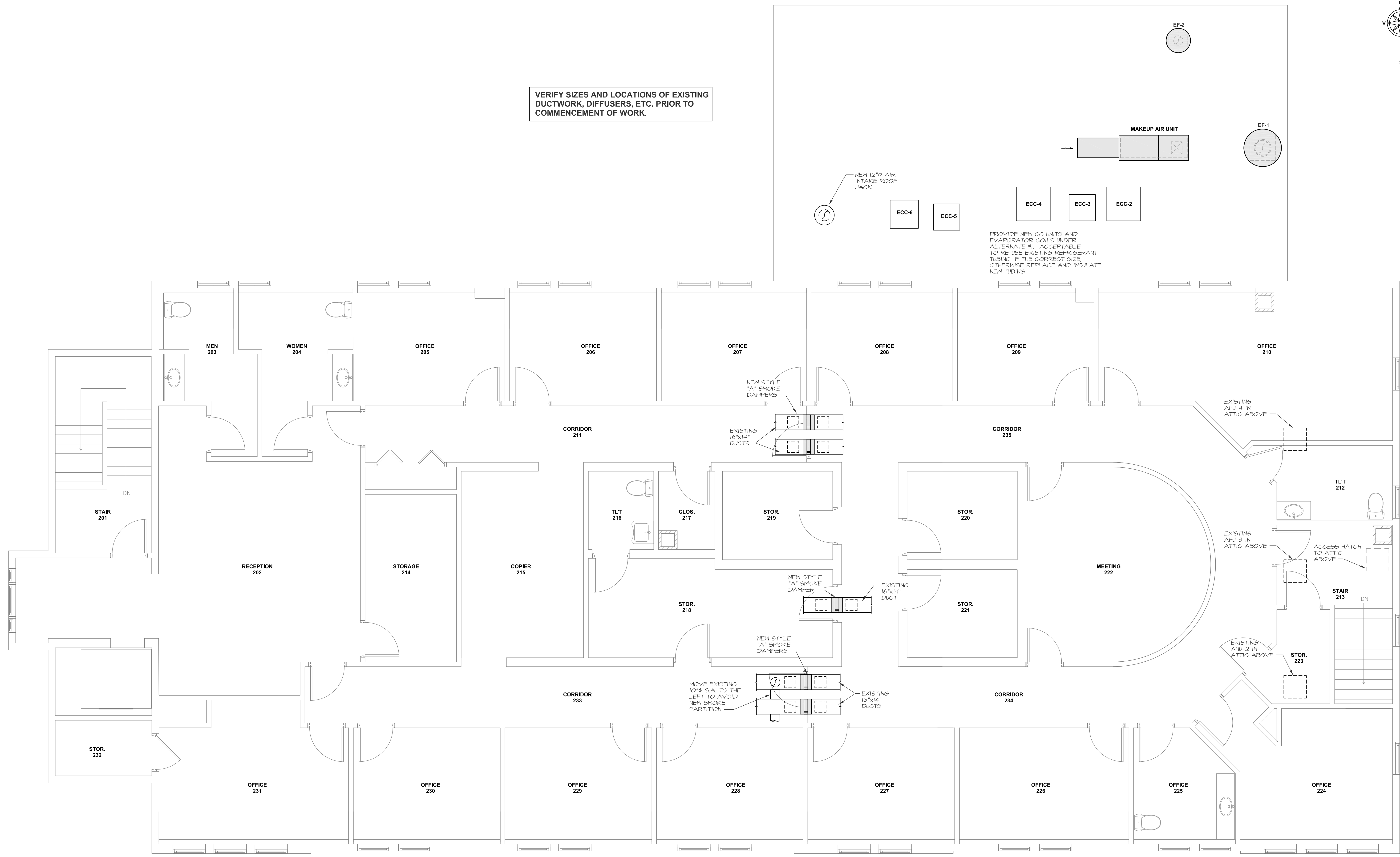


December 18, 2017, 11:48 am  
 X:\Projects\1733 17 Bishop Street Drawings\1733 M1-M2.dwg



VERIFY SIZES AND LOCATIONS OF EXISTING DUCTWORK, DIFFUSERS, ETC. PRIOR TO COMMENCEMENT OF WORK.

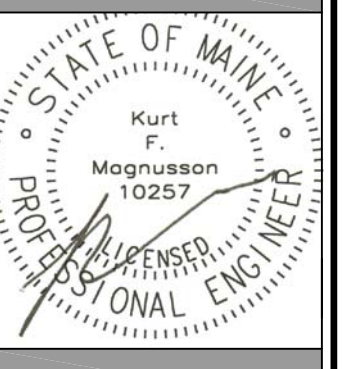
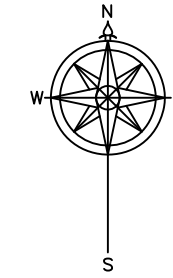
PROVIDE NEW CG UNITS AND EVAPORATOR COILS UNDER ALTERNATE #1. ACCEPTABLE TO RE-USE EXISTING REFRIGERANT TUBING IF THE CORRECT SIZE, OTHERWISE REPLACE AND INSULATE NEW TUBING



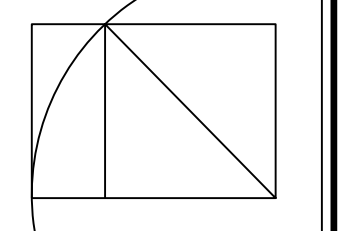
**MECHANICAL SYSTEMS ENGINEERS**  
 ROYAL RIVER CENTER, UNIT 10B  
 10 FOREST FALLS DRIVE, YARMOUTH, MAINE 04096  
 (207) 846-1441  
 FACEBOOK: MECHANICAL SYSTEMS ENGINEERS  
 Project #1733  
 © COPYRIGHT 2017



**M2**



**WHIPPLE | CALLENDER ARCHITECTS**



136 PLEASANT AVE.  
 PORTLAND, ME 04103  
 P 207.775.2696  
 F 207.775.3631  
 www.whipplecallender.com

DATE	DESCRIPTION
11/16/16	FOR CONSTRUCTION

DATE: 12/20/17  
 CHECKED BY: K.F.M.  
 DRAWN BY: R.E.M.  
 JOB: 2017-BISHOP

SHEET TITLE:  
**MECHANICAL FLOOR PLAN SECOND FL'R**

**17 BISHOP STREET**  
 PORTLAND, MAINE  
 17 BISHOP STREET