



1 BUILDING FROM SOUTH - BISHOP STREET
A0.2



2 BUILDING FROM EAST
A0.2

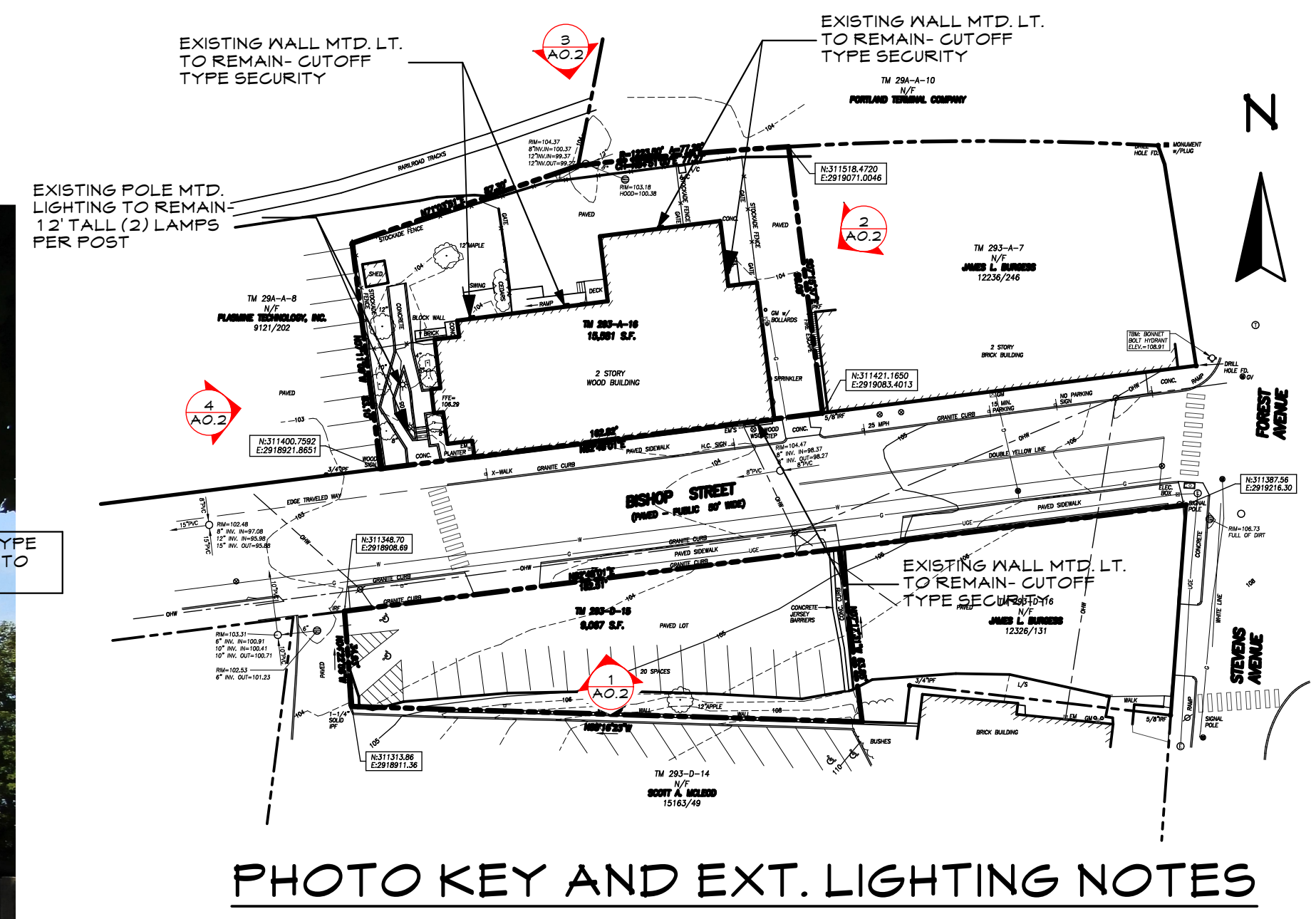


PHOTO KEY AND EXT. LIGHTING NOTES

GENERAL NOTES

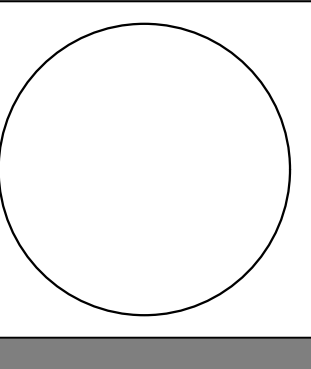
1. EXISTING WINDOWS TO REMAIN
2. EXISTING SIDING & ROOFING TO REMAIN
3. EXISTING ADA ENTRY RAMP TO REMAIN
4. EXISTING EXTERIOR LIGHTING TO REMAIN
5. EXISTING EXTERIOR MECH. COMPONENTS TO REMAIN



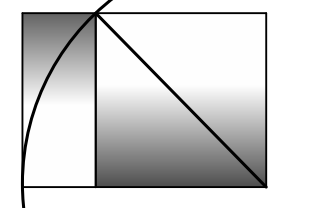
3 BUILDING FROM NORTH
A0.2



4 BUILDING FROM WEST
A0.2



WHIPPLE
CALLENDER
ARCHITECTS



136 PLEASANT AVE.
PORTLAND, ME 04103
P 207.775.2696
F 207.775.3631
www.whipplecallender.com

MARK	DATE	DESCRIPTION

DATE: 1/3/18
CHECKED BY: JAD
DRAWN BY: CJC
JOB: 2017- BISHOP
SHEET TITLE:

SITE PHOTOS