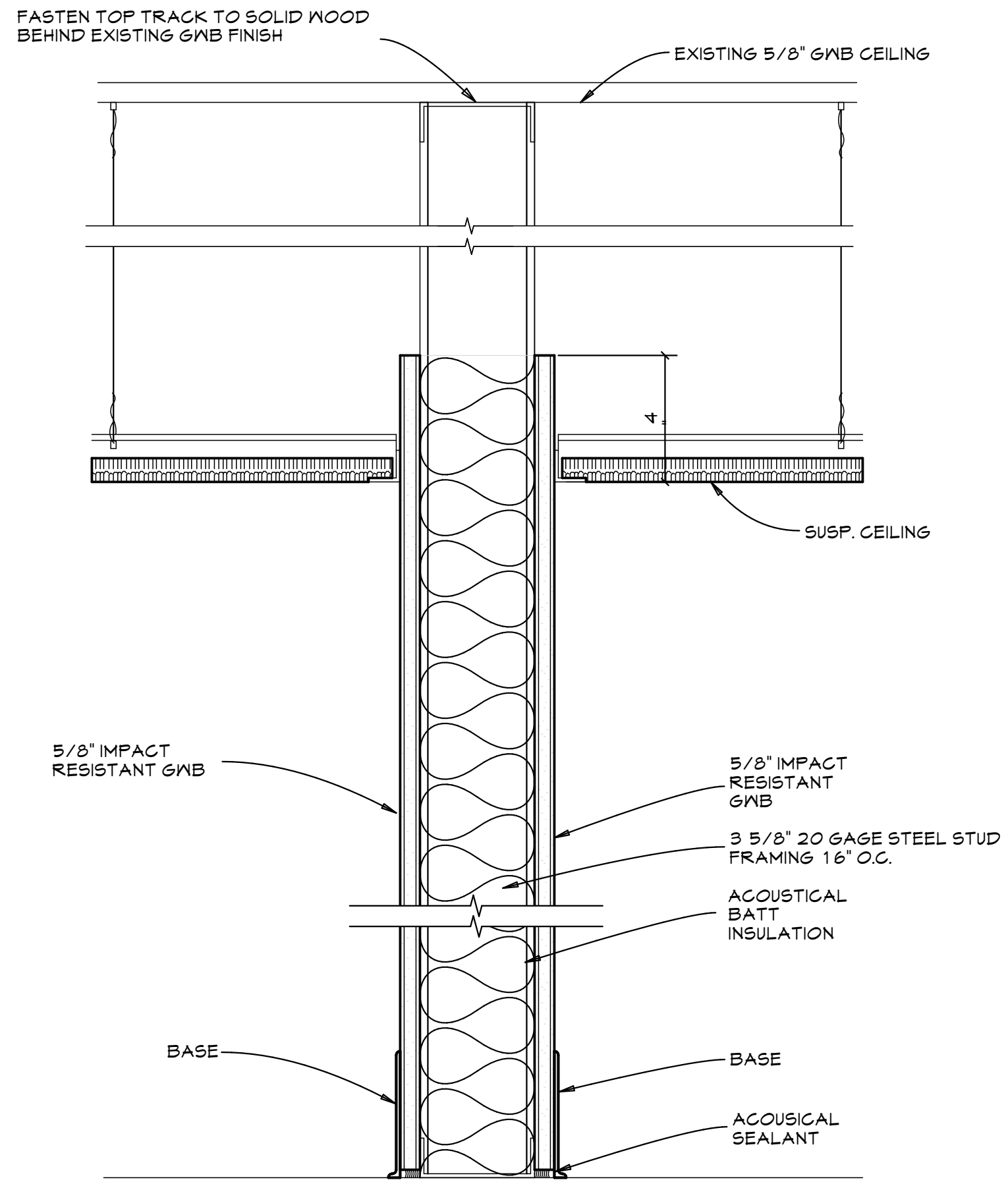
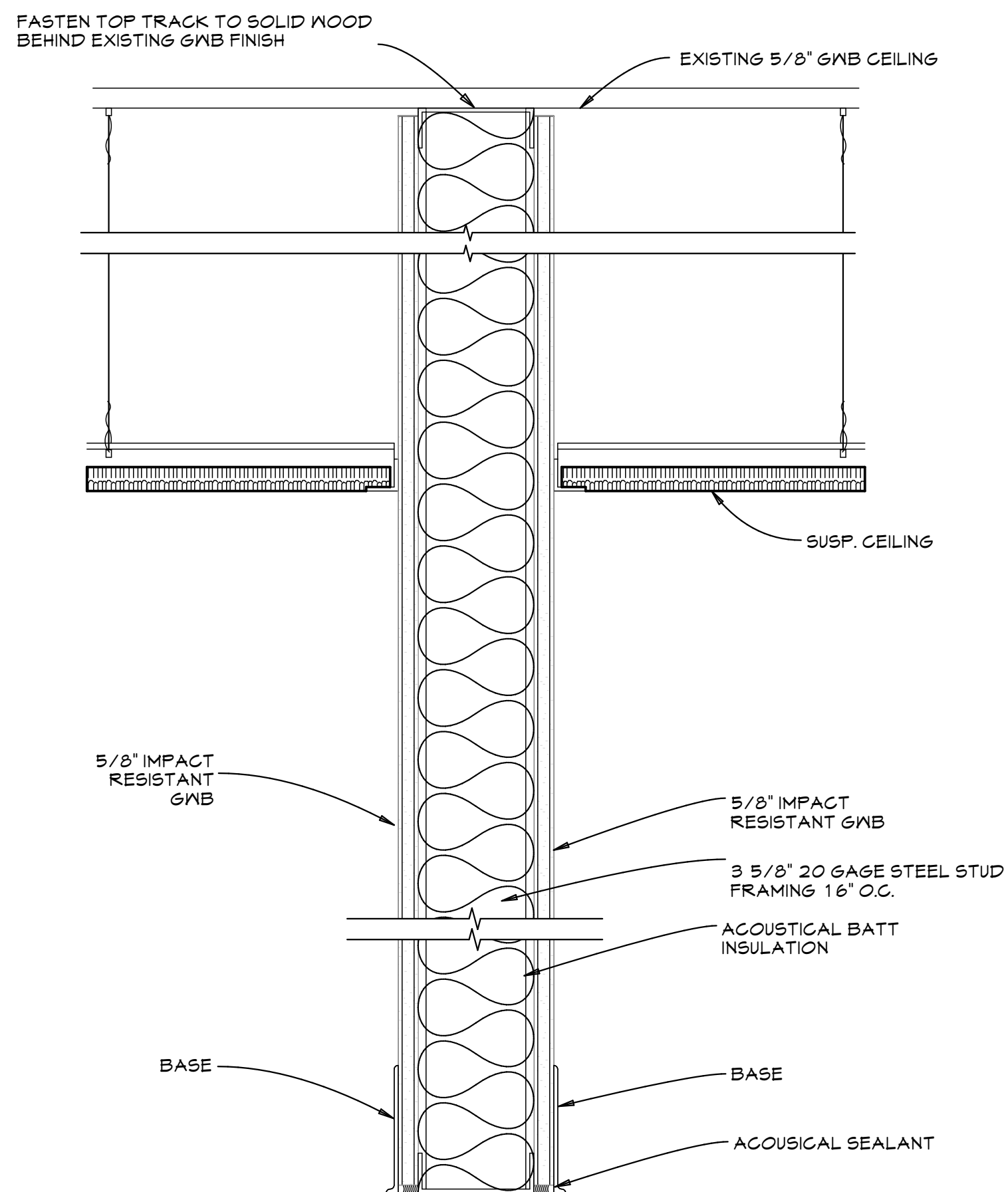


WALL PARTITION TYPES



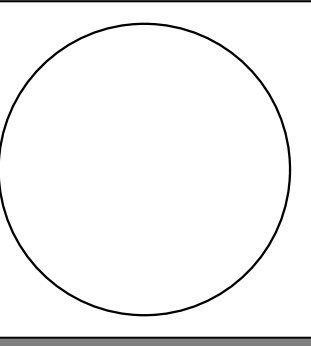
1 WALL PARTITION 1- TYPICAL
SCALE: 3/8" = 1'-0"



2 WALL PARTITION 2- SMOKE BARRIER
SCALE: 3/8" = 1'-0"

FINISH SCHEDULE

NO.	ROOM NAME	WALL- CLASS B	FLOOR- CLASS B	BASE	CEILING	NOTES
101	ENTRY	PAINT	VINYL PLANK	4" VINYL	A.C.T.	
102	LOBBY	PAINT	VINYL PLANK	4" VINYL	A.C.T.	
103	ELEVATOR RM	PAINT	EXISTING	EXISTING	1 HR. G&B	
104	ELEC. RM.	PAINT	EXISTING	EXISTING	1 HR. G&B	
105	OFFICE 1	PAINT	VINYL PLANK	4" VINYL	A.C.T.	
106	BEDROOM 11	PAINT	VINYL PLANK	4" VINYL	EXIST. G&B.	
107	BEDROOM 10	PAINT	VINYL PLANK	4" VINYL	EXIST. G&B.	
108	BEDROOM 9	PAINT	VINYL PLANK	4" VINYL	EXIST. G&B.	
109	BEDROOM 8	PAINT	VINYL PLANK	4" VINYL	EXIST. G&B.	
110	BEDROOM 7	PAINT	VINYL PLANK	4" VINYL	EXIST. G&B.	
111	STOR.	PAINT	VINYL PLANK	4" VINYL	1 HR. G&B.	
112	ENTRY STAIR	PAINT		4" VINYL	A.C.T.	
113	LIVING ROOM	PAINT	VINYL PLANK	4" VINYL	A.C.T.	
114	STOR./LAUND.	PAINT	VINYL SHEET	INTEGRAL VINYL BASE	1 HR. G&B.	
115	MEN	EPOXY PAINT & TILE	TILE	TILE	A.C.T.	
116	WOMEN	EPOXY PAINT & TILE	TILE	TILE	A.C.T.	
117	MEN	EPOXY PAINT & TILE	TILE	TILE	A.C.T.	
118	WOMEN	EPOXY PAINT & TILE	TILE	TILE	A.C.T.	
119	MEN	EPOXY PAINT & TILE	TILE	TILE	A.C.T.	
120	NURSE/ MED. OFFICE	PAINT	VINYL PLANK	4" VINYL	A.C.T.	
121	HOUSE STOR.	PAINT	VINYL PLANK	4" VINYL	1 HR. G&B.	
122	STAFF BATHRM.	EPOXY PAINT & TILE	TILE		A.C.T.	
123	CORRIDOR	PAINT	VINYL PLANK	4" VINYL	A.C.T.	
124	TECH	PAINT	VINYL PLANK	4" VINYL	A.C.T.	
125	BEDROOM 6	PAINT	VINYL PLANK	4" VINYL	A.C.T.	
126	OFFICE 4	PAINT	VINYL PLANK	4" VINYL	A.C.T.	
127	BEDROOM 5	PAINT	VINYL PLANK	4" VINYL	A.C.T.	
128	KITCHEN STORAGE	EPOXY PAINT	SHEET VINYL	INTEGRAL VINYL BASE	EPOXY PAINT G&B	
129	KITCHEN	EPOXY PAINT	SHEET VINYL	INTEGRAL VINYL BASE	A.C.T.	WASHABLE CEILING TILE
130	DINING	PAINT	VINYL PLANK	4" VINYL	A.C.T.	
131	CORRIDOR	PAINT	VINYL PLANK	4" VINYL	A.C.T.	
132	OFFICE 3	PAINT	VINYL PLANK	4" VINYL	A.C.T.	
133	OFFICE 2	PAINT	VINYL PLANK		A.C.T.	
134	BEDROOM 4	PAINT	VINYL PLANK	4" VINYL	EXIST. G&B.	
135	BEDROOM 3	PAINT	VINYL PLANK	4" VINYL	EXIST. G&B.	
136	BEDROOM 2	PAINT	VINYL PLANK	4" VINYL	EXIST. G&B.	
137	BEDROOM 1	PAINT	VINYL PLANK	4" VINYL	EXIST. G&B.	
138	STORAGE	PAINT	VINYL PLANK	4" VINYL	A.C.T.	
139	INTAKE	PAINT	VINYL PLANK	4" VINYL	A.C.T.	
140	EGRESS STAIR	PAINT	VINYL PLANK	4" VINYL	A.C.T.	
201	STAIR	EXIST. TO REMAIN	EXIST. TO REMAIN	EXIST. TO REMAIN	EXISTING TO REMAIN	
202	RECEPTION	EXIST. TO REMAIN	EXIST. TO REMAIN	EXIST. TO REMAIN	EXISTING TO REMAIN	
203	MEN	EXIST. TO REMAIN	EXIST. TO REMAIN	EXIST. TO REMAIN	EXISTING TO REMAIN	
204	WOMEN	EXIST. TO REMAIN	EXIST. TO REMAIN	EXIST. TO REMAIN	EXISTING TO REMAIN	
205	OFFICE	EXIST. TO REMAIN	EXIST. TO REMAIN	EXIST. TO REMAIN	EXISTING TO REMAIN	
206	OFFICE	EXIST. TO REMAIN	EXIST. TO REMAIN	EXIST. TO REMAIN	EXISTING TO REMAIN	
207	OFFICE	EXIST. TO REMAIN	EXIST. TO REMAIN	EXIST. TO REMAIN	EXISTING TO REMAIN	
208	OFFICE	EXIST. TO REMAIN	EXIST. TO REMAIN	EXIST. TO REMAIN	EXISTING TO REMAIN	
209	OFFICE	EXIST. TO REMAIN	EXIST. TO REMAIN	EXIST. TO REMAIN	EXISTING TO REMAIN	
210	OFFICE	EXIST. TO REMAIN	EXIST. TO REMAIN	EXIST. TO REMAIN	EXISTING TO REMAIN	
211	CORRIDOR	EXIST. TO REMAIN	EXIST. TO REMAIN	EXIST. TO REMAIN	EXISTING TO REMAIN	
212	BATH	EXIST. TO REMAIN	EXIST. TO REMAIN	EXIST. TO REMAIN	EXISTING TO REMAIN	
213	EGRESS STAIR	EXIST. TO REMAIN	EXIST. TO REMAIN	EXIST. TO REMAIN	EXISTING TO REMAIN	
214	STORAGE	EXIST. TO REMAIN	EXIST. TO REMAIN	EXIST. TO REMAIN	EXISTING TO REMAIN	
215	COPIER	EXIST. TO REMAIN	EXIST. TO REMAIN	EXIST. TO REMAIN	EXISTING TO REMAIN	
216	TOILET	EXIST. TO REMAIN	EXIST. TO REMAIN	EXIST. TO REMAIN	EXISTING TO REMAIN	
217	CLO.	EXIST. TO REMAIN	EXIST. TO REMAIN	EXIST. TO REMAIN	EXISTING TO REMAIN	
218	STOR.	EXIST. TO REMAIN	EXIST. TO REMAIN	EXIST. TO REMAIN	EXISTING TO REMAIN	
219	STOR.	EXIST. TO REMAIN	EXIST. TO REMAIN	EXIST. TO REMAIN	EXISTING TO REMAIN	
220	STOR.	EXIST. TO REMAIN	EXIST. TO REMAIN	EXIST. TO REMAIN	EXISTING TO REMAIN	
221	STOR.	EXIST. TO REMAIN	EXIST. TO REMAIN	EXIST. TO REMAIN	EXISTING TO REMAIN	
222	MEETING ROOM	EXIST. TO REMAIN	EXIST. TO REMAIN	EXIST. TO REMAIN	EXISTING TO REMAIN	
223	STOR.	EXIST. TO REMAIN	EXIST. TO REMAIN	EXIST. TO REMAIN	EXISTING TO REMAIN	
224	OFFICE	EXIST. TO REMAIN	EXIST. TO REMAIN	EXIST. TO REMAIN	EXISTING TO REMAIN	
225	BATH	EXIST. TO REMAIN	EXIST. TO REMAIN	EXIST. TO REMAIN	EXISTING TO REMAIN	
226	OFFICE	EXIST. TO REMAIN	EXIST. TO REMAIN	EXIST. TO REMAIN	EXISTING TO REMAIN	
227	OFFICE	EXIST. TO REMAIN	EXIST. TO REMAIN	EXIST. TO REMAIN	EXISTING TO REMAIN	
228	OFFICE	EXIST. TO REMAIN	EXIST. TO REMAIN	EXIST. TO REMAIN	EXISTING TO REMAIN	
229	OFFICE	EXIST. TO REMAIN	EXIST. TO REMAIN	EXIST. TO REMAIN	EXISTING TO REMAIN	
230	OFFICE	EXIST. TO REMAIN	EXIST. TO REMAIN	EXIST. TO REMAIN	EXISTING TO REMAIN	
231	OFFICE	EXIST. TO REMAIN	EXIST. TO REMAIN	EXIST. TO REMAIN	EXISTING TO REMAIN	
300	MECHANICAL ROOM	EXIST. TO REMAIN	EXIST. TO REMAIN	EXIST. TO REMAIN	EXISTING TO REMAIN	
301	EXISTING VENTED ATTIC SPACE	EXIST. TO REMAIN	EXIST. TO REMAIN	EXIST. TO REMAIN	EXISTING TO REMAIN	



DESCRIPTION
DATE
MARK

DATE: 8/31/17
CHECKED BY: JAD
DRAWN BY: CJC
JOB: 2017- BISHOP
SHEET TITLE:

THIS DRAWING IS AN INSTRUMENT OF SERVICE AND SHALL REMAIN THE PROPERTY OF WHIPPLE CALLENDER ARCHITECTS. IT SHALL NOT BE USED FOR ANY OTHER PURPOSE THAN THAT FOR WHICH IT IS SPECIFICALLY FURNISHED.

A6.2 FINISH SCHEDULE & WALL TYPES - Plotted on 8/31/17 at 2:31 PM by Joe Delaney. File Path: \\Volumes\WCA Expansion Drive\ WCA Projects\2017 Projects\BIS Bishop st.\BIS ArchCAD Models\BIS Model v20.plt