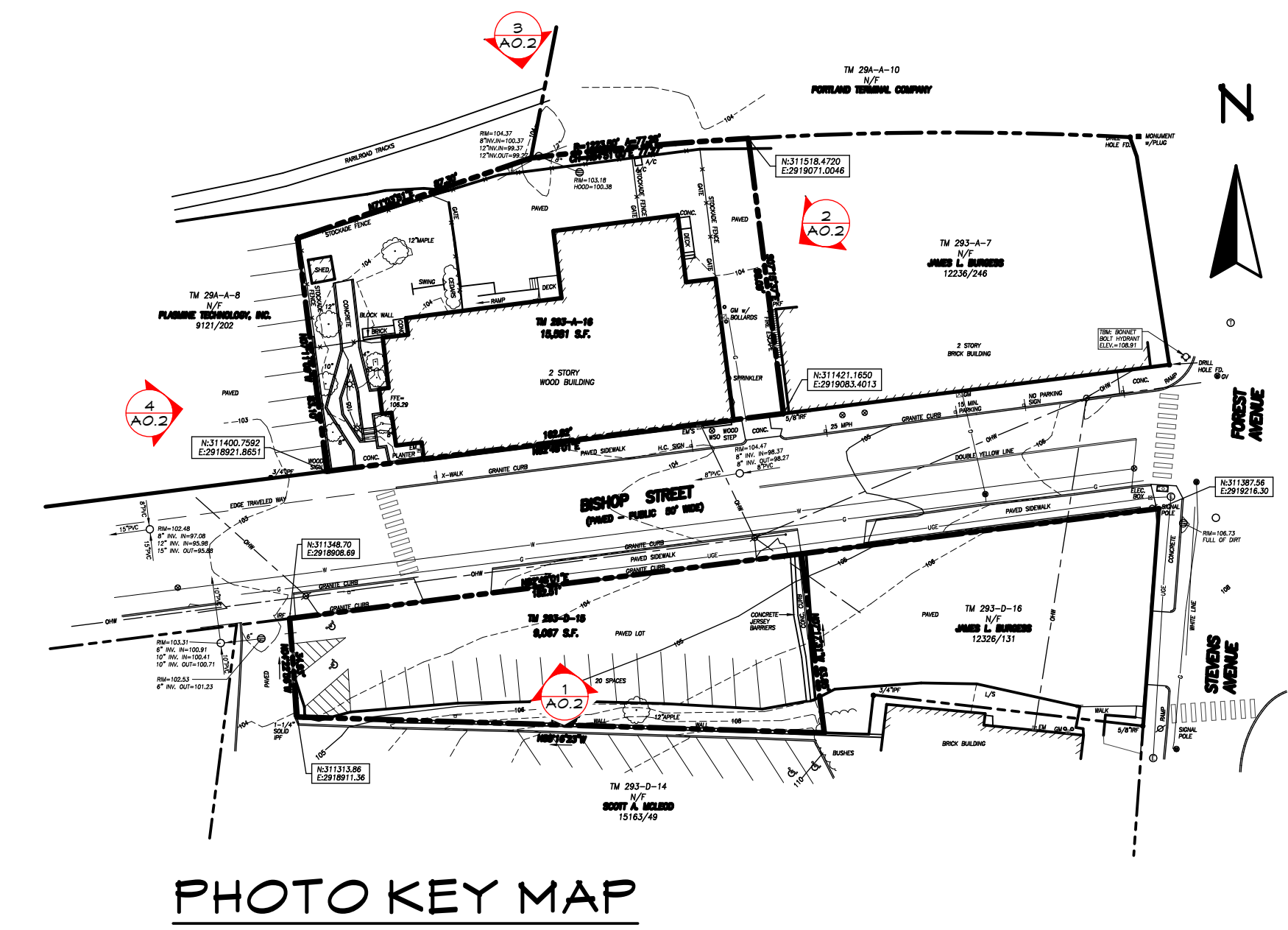




1 BUILDING FROM SOUTH - BISHOP STREET  
A0.2



2 BUILDING FROM EAST  
A0.2



**GENERAL NOTES**

1. EXISTING WINDOWS TO REMAIN
2. EXISTING SIDING TO REMAIN
3. EXISTING ADA ENTRY RAMP TO REMAIN
4. EXISTING EXTERIOR LIGHTING TO REMAIN
5. EXISTING EXTERIOR MECH. COMPONENTS TO REMAIN



3 BUILDING FROM NORTH  
A0.2



4 BUILDING FROM WEST  
A0.2

**PINETREE RECOVERY**  
 17 BISHOP STREET    PORTLAND, MAINE 04103

**WHIPPLE CALLENDER ARCHITECTS**  
 136 PLEASANT AVE.  
 PORTLAND, ME 04103  
 P 207.775.2696  
 F 207.775.3631  
 www.whipplecallender.com

MARK	DATE	DESCRIPTION

DATE: 8/31/17  
 CHECKED BY: JAD  
 DRAWN BY: CJC  
 JOB: 2017-BISHOP  
 SHEET TITLE: SITE PHOTOS

A0.2