

X No change to Heating system

X No change to exterior Doors or windows

X All interior Doors

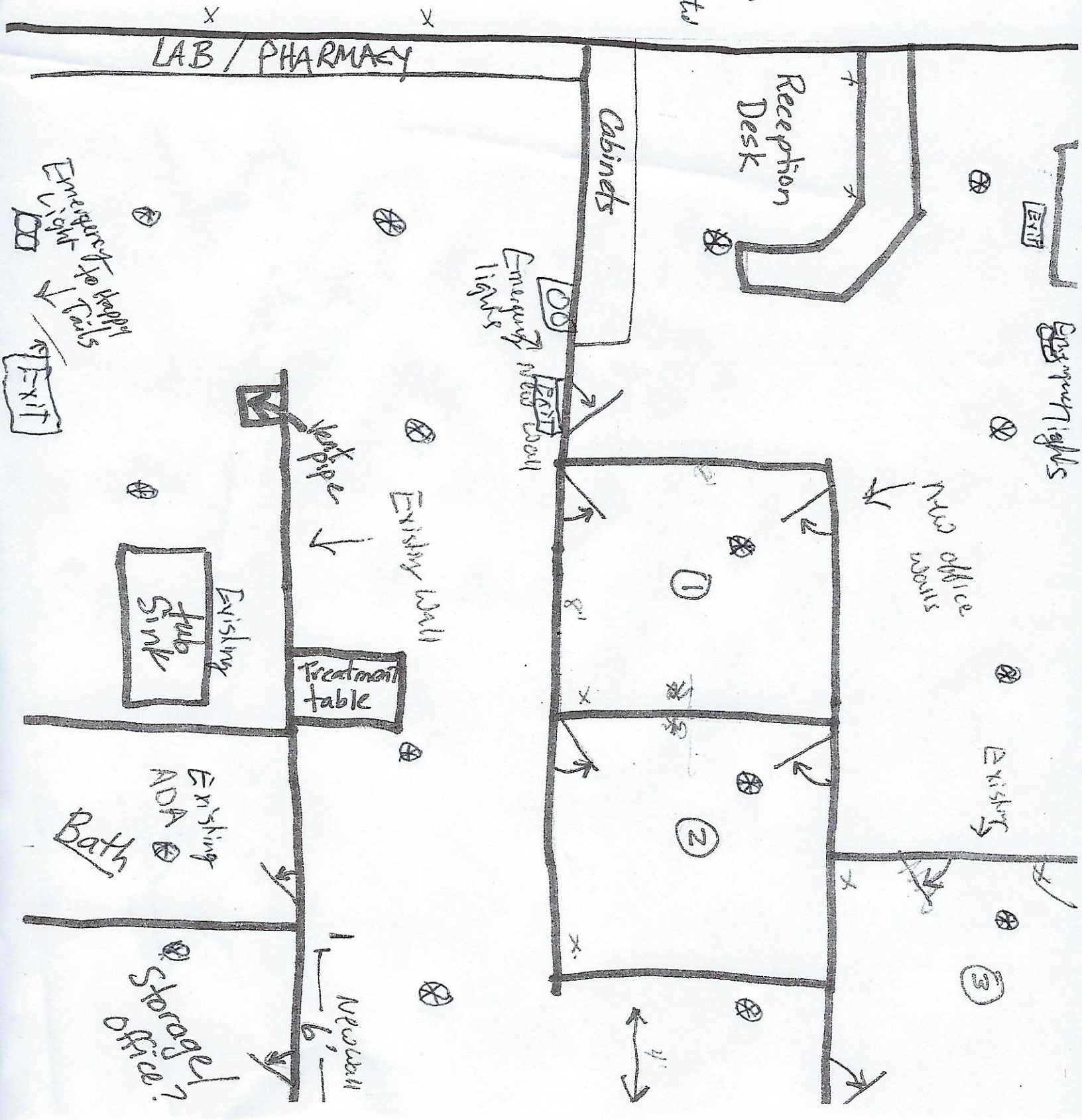
36" x 90 Knock Down Steel Frames, solid OAH 20 min Fire rated

Doors

X No changes to exterior walls or ceilings

* Handicap Ramp Existing

⊗ = Sprinkler Heads



LAB / PHARMACY

Reception Desk

Cabinets

Emergency lights

New door

Existing wall

Treatment table

Existing

Sink

Office

1

2

3

Existing

Bath

Existing ADA

Storage Office

New wall 6'

4'

EXIT

Emergency lights

⊗

⊗

⊗

⊗

⊗

⊗

⊗

⊗

⊗

⊗

⊗

⊗

⊗

Emergency to happy lights

EXIT

X

X

⊗

⊗

⊗