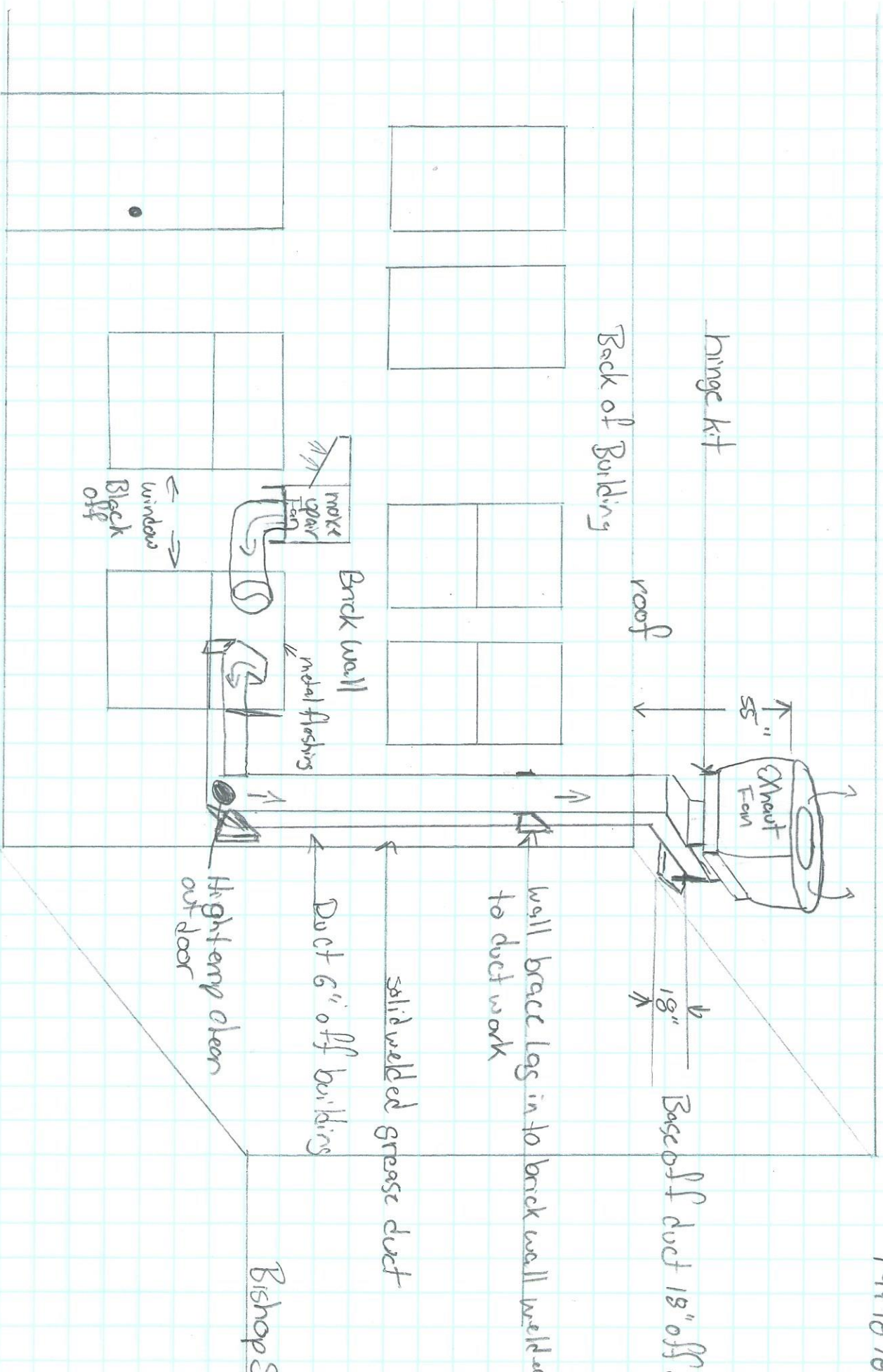


permitt # 2014-00929

11 Bishop ST
Revised Draw
Duct move to back of building

Not to Scale
Dan Bourgeois
749-1876



Hinge Kit

Back of Building

roof

Brick wall

metal flashing

Heat Fan

18"

Base of duct 18" off

Wall brace logs in to back wall weld on to duct work

solid welded grease duct

Duct 6" off building

High temp clear out door

Black off window

Bishops