

1250 FOREST AVENUE
INTERIOR RENOVATION - NO STRUCTURAL WORK

OWNER
TIM ZERILLO
SAZ, LLC
17 JORDAN DRIVE
GORHAM, ME 04038
timothyzerillo@yahoo.com



DEXTRIOUS CREATIVE

PORTLAND, ME 04102
TRACIE REED, ARCHITECT
NCARB, AIA, LEED AP BD+C
traciereed@dextrouscreative.com
207.403.0459 (cell)

PROJECT TEAM

CONTRACTOR

Konnick Ballantyne, President
Optimum, Inc.
91 Auburn St., Suite 1050
Portland, ME 04103
207.712.7195
www.optimuminc.com
konnick@optimuminc.com

No.	Description	Date

INTERIOR ELEVATIONS

Project number 17-16_1250 Forest

Date 10.14.17

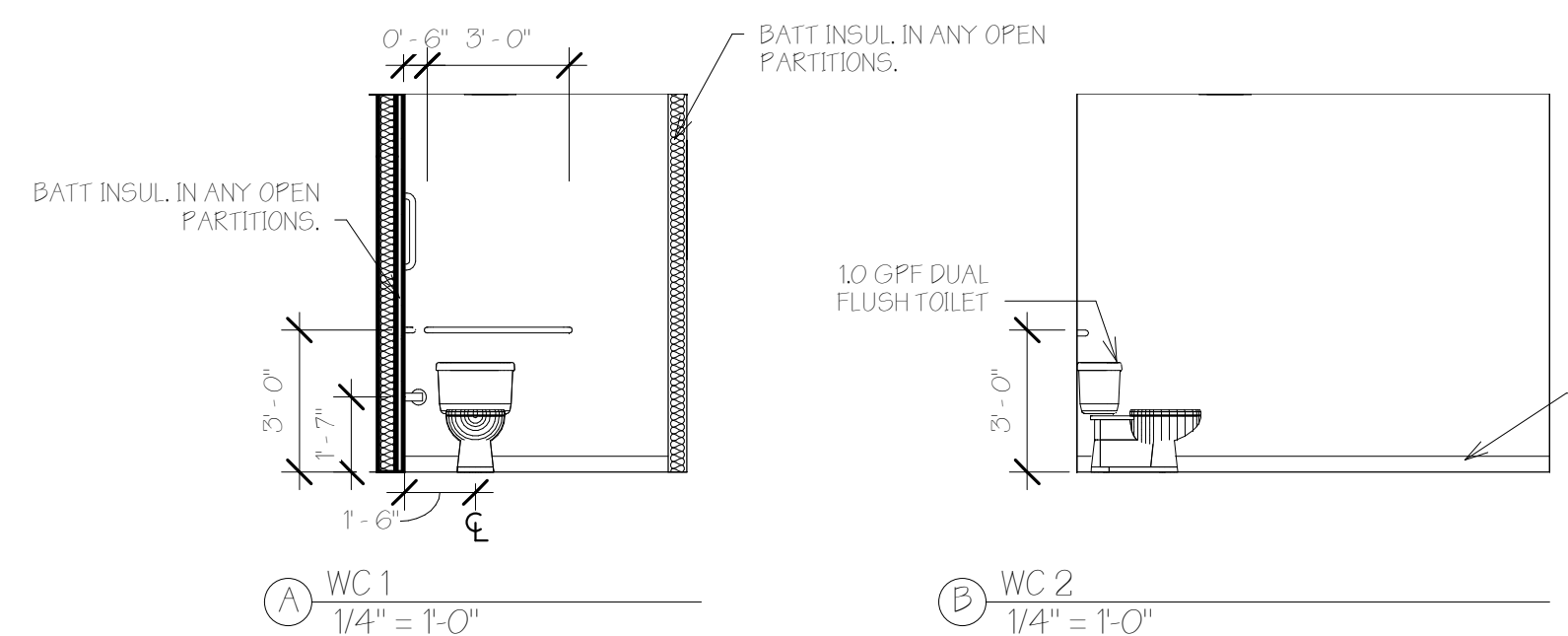
Drawn by T.J.R.

Checked by T.J.R.

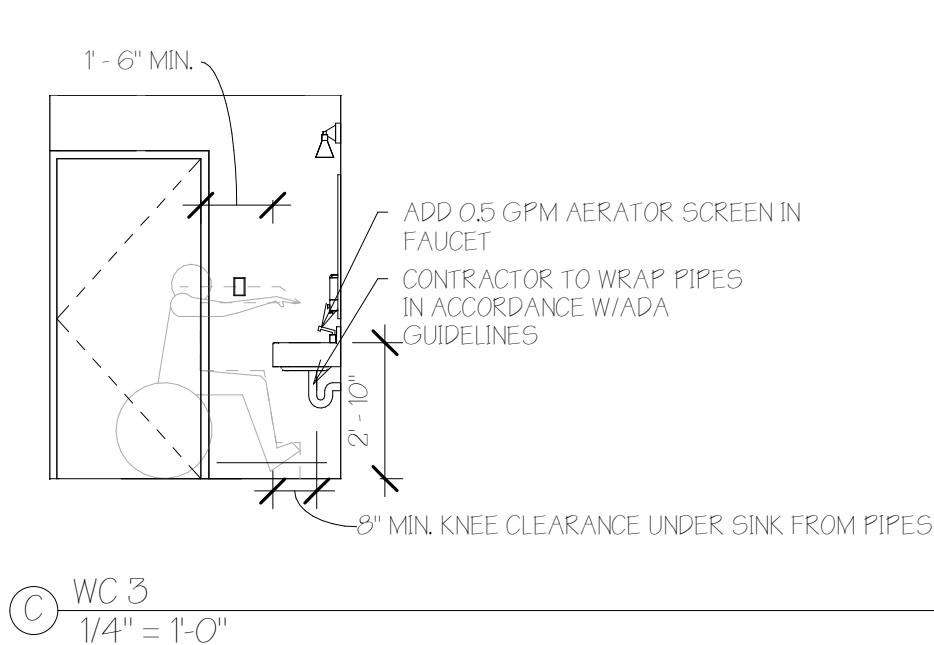
A-4.1

Scale 1/4" = 1'-0"

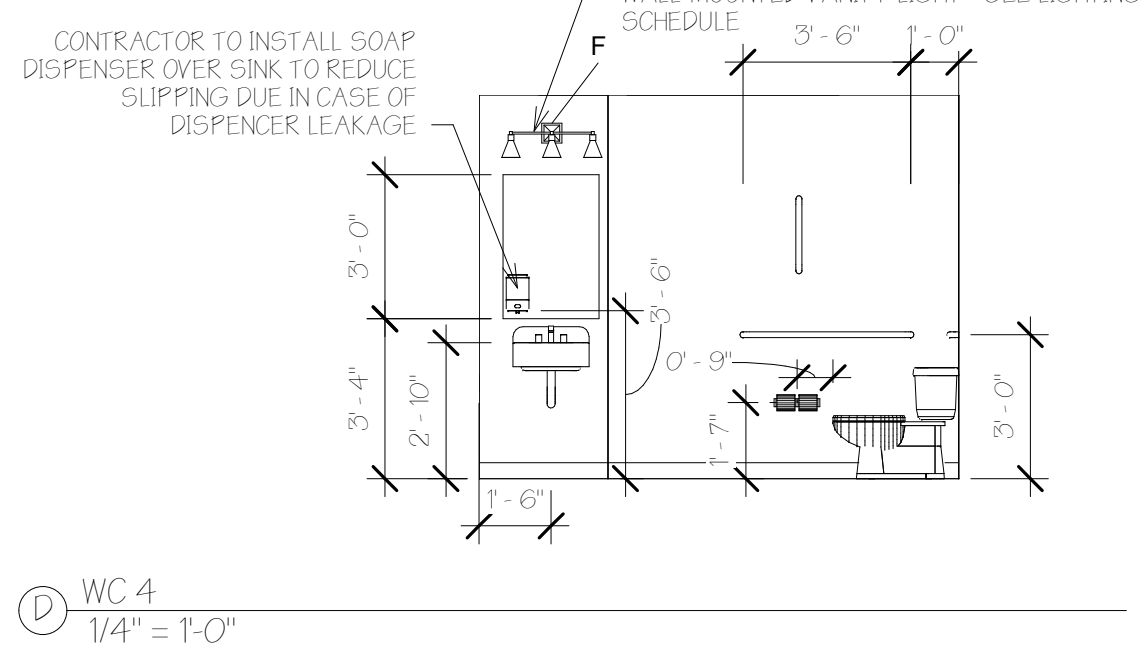
10/14/2017 3:47:33 PM



A WC 1
1/4" = 1'-0"

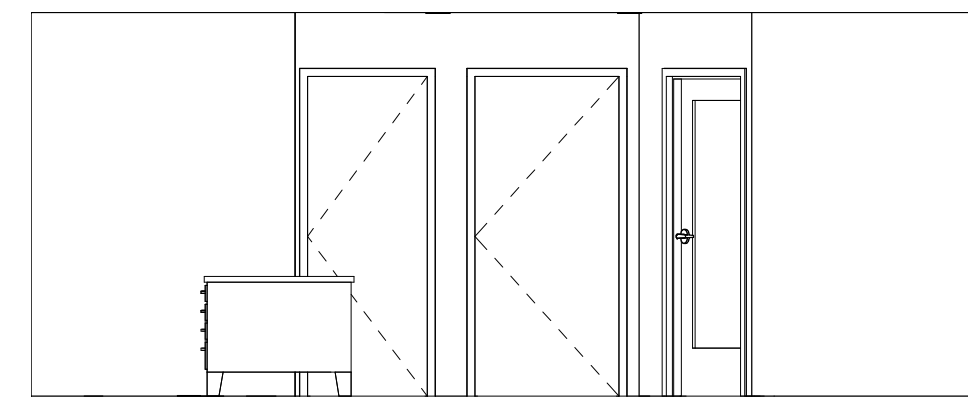


C WC 3
1/4" = 1'-0"

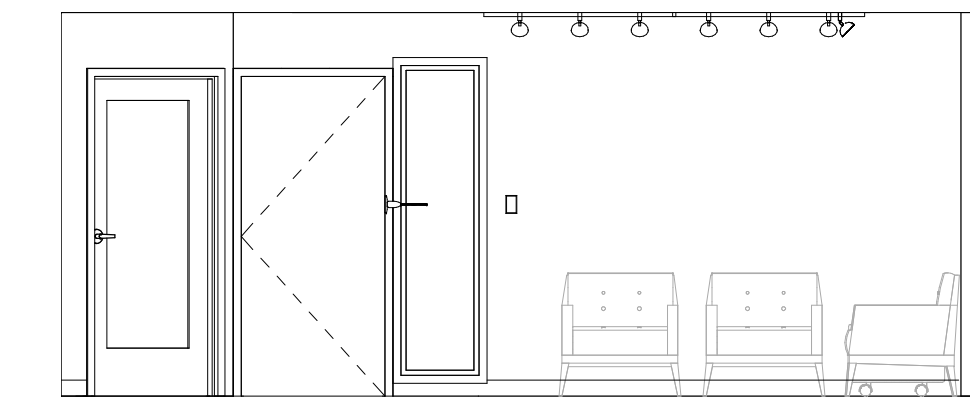


D WC 4
1/4" = 1'-0"

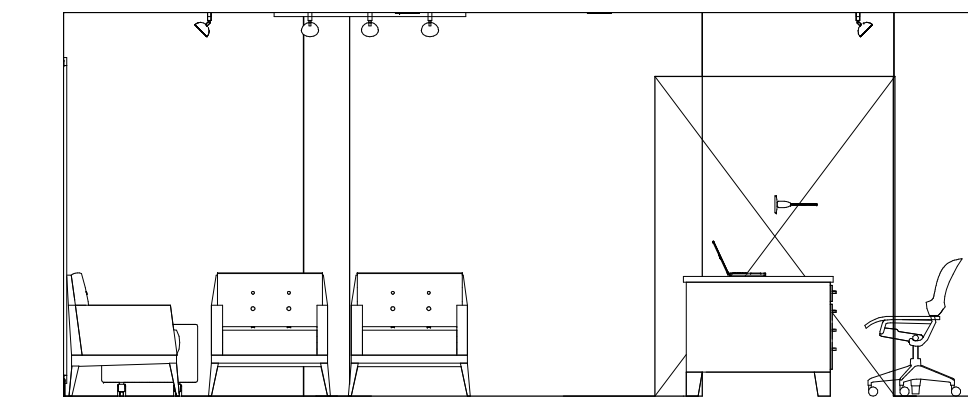
- GENERAL BATHROOM NOTES**
1. PROVIDE SOLID BLOCKING FOR ALL WALL MOUNTED/HUNG FIXTURES OR BRACKETS.
 2. MOUNT HAND-SOAP DISPENSER OVER THE MIRROR SO THAT IT DOES NOT DRIP ON THE FLOOR, CREATING A SLIPPING HAZARD.
 3. TOILET PAPER DISPENSER - DISPENSER SHALL BE MOUNTED NO HIGHER THAN 18" AFF AND 7" IN FRONT OF TOILET OR ADA-STALL
 4. MOUNT GRAB BARS 33-36" AFF.
 5. TOILET SEAT HEIGHT OF 17-18" AFF.
 6. PROVIDE ADA-COMPLIANT PIPE WRAP ON ALL SINKS, TYP.
 7. 40" AFF MAX MIRROR HEIGHT
 8. 1 1/4" TO 2" DIAMETER GRAB BARS IN ACCESSIBLE WCS TO INCLUDE (1) 3'-0" GRAB BAR MOUNTED 6" FROM CORNER FACE OF WALL, (1) 3'-6" GRAB BAR, 1'-0" FROM CORNER FACE OF WALL, AND (1) VERTICAL 18" BAR MOUNTED 39-41" AFF 51" FROM CORNER OF WALL ABOVE 3'-6" BAR.



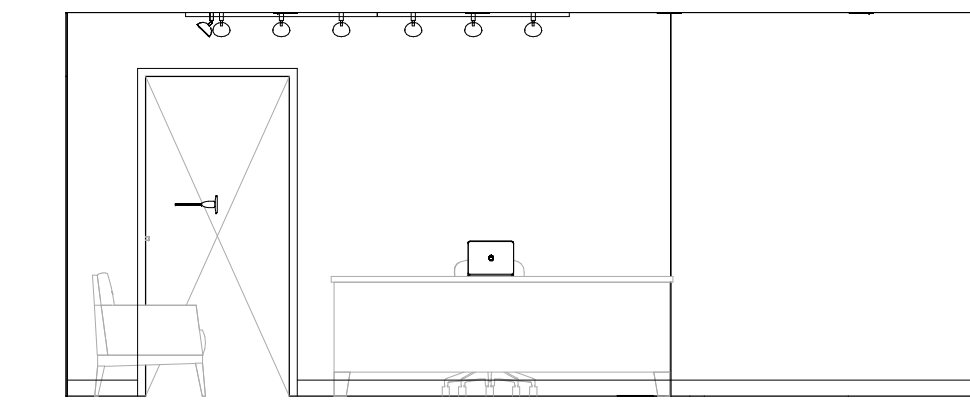
E RECEPTION 1
1/4" = 1'-0"



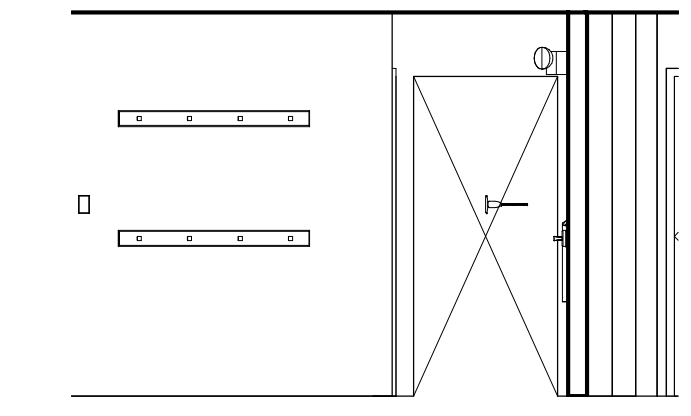
F RECEPTION 2
1/4" = 1'-0"



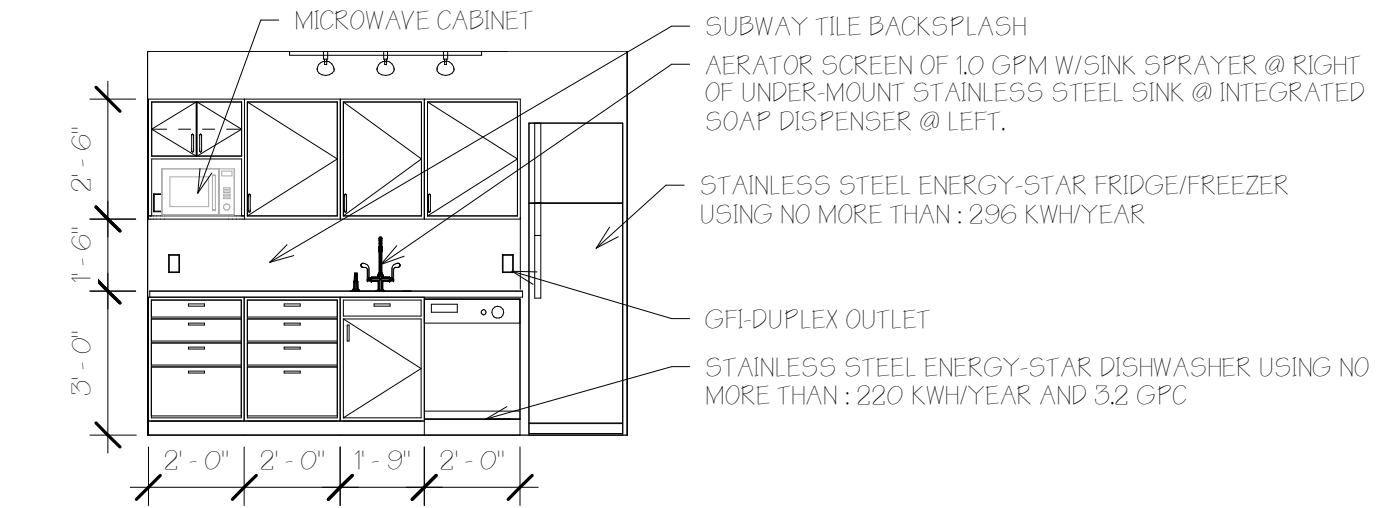
G RECEPTION 3
1/4" = 1'-0"



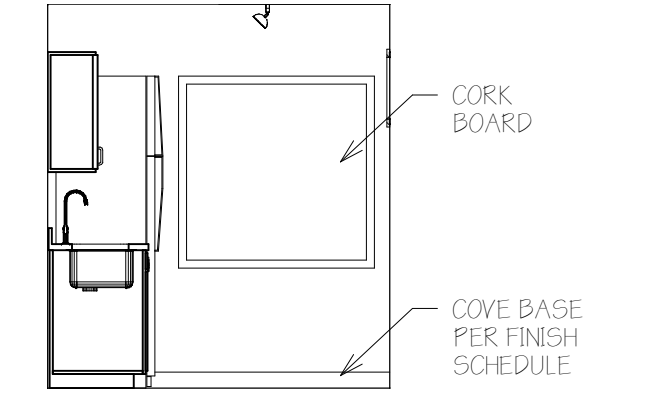
H RECEPTION 4
1/4" = 1'-0"



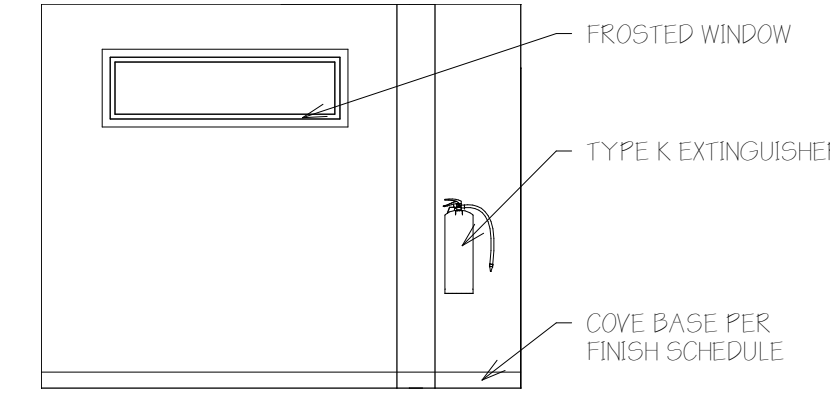
J REAR HALL
1/4" = 1'-0"



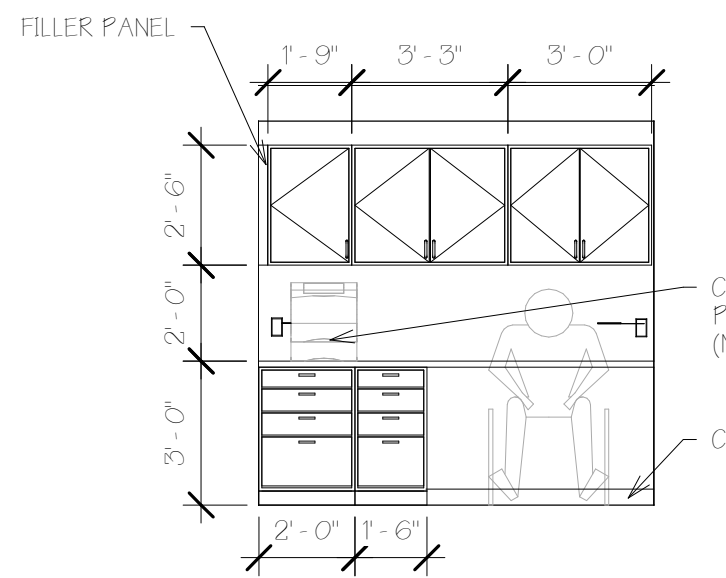
K KITCHENETTE 1
1/4" = 1'-0"



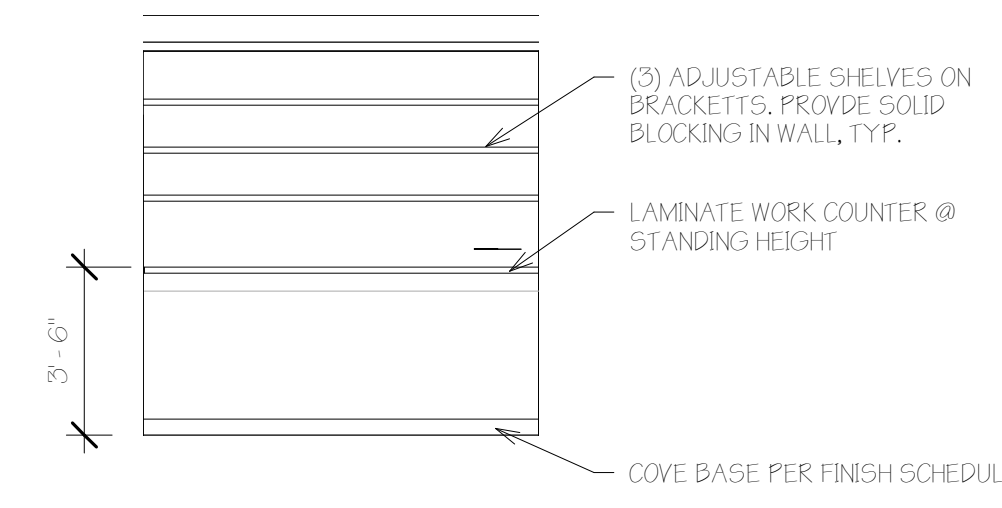
L KITCHENETTE 2
1/4" = 1'-0"



M KITCHENETTE 3
1/4" = 1'-0"



N COPY 1
1/4" = 1'-0"



P COPY 2
1/4" = 1'-0"