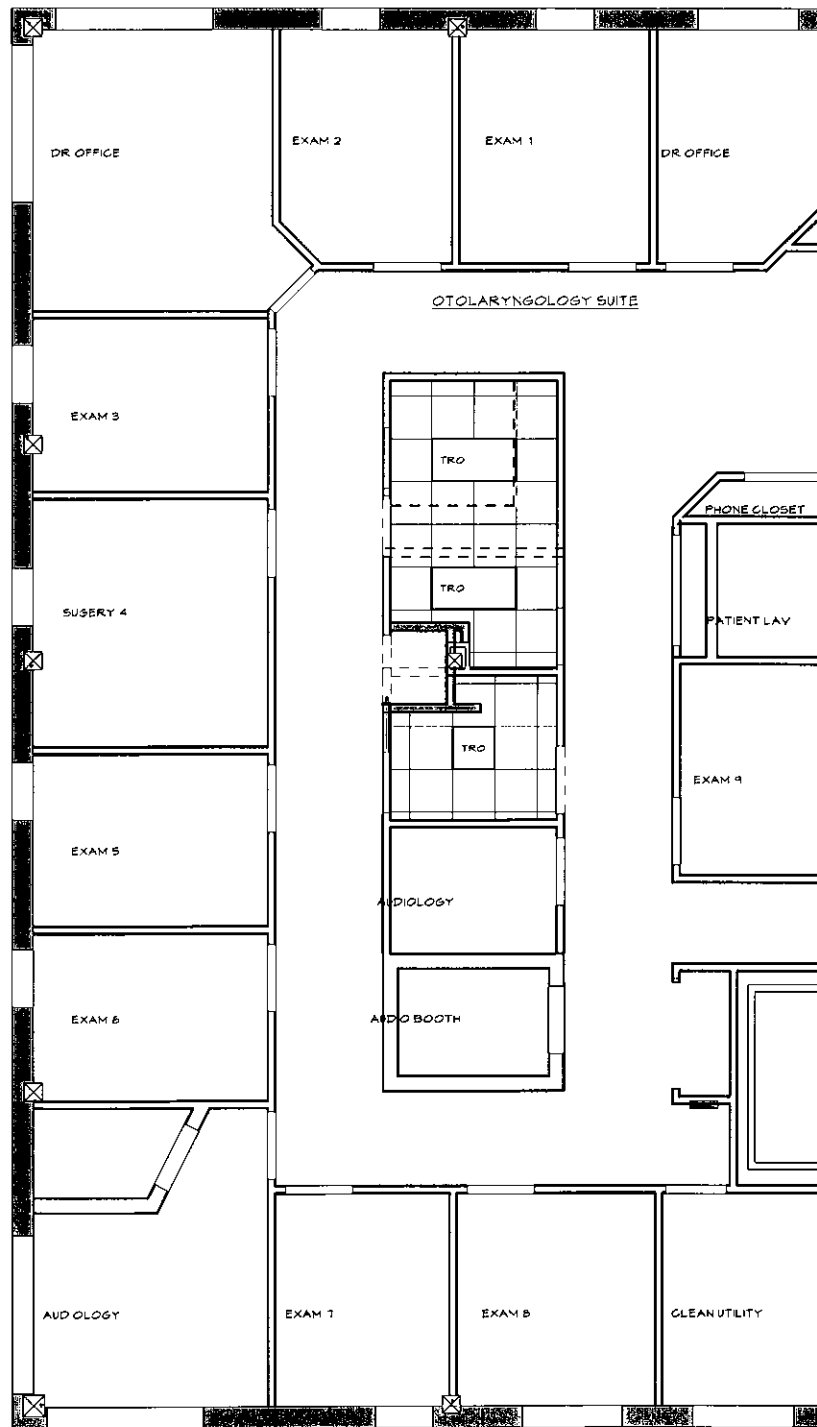


MMP OTOLARYNGOLOGY LAB

THIRD FLOOR SUITE, 1250 FOREST AVENUE, PORTLAND, MAINE

REFLECTED CEILING PLAN



OTO FLOOR LIGHTING / R.C.P.
SCALE: 1/4" = 1'-0"

FINISHES

- FLOORING MATERIALS:**
- JOHNSONITE, ARIA 2.0. COLOR: 651 COTTON BLOSSOM
 - VINYL BASE: JOHNSONITE 4" COVE. COLOR: 80 FAWN CB
 - HALLWAY VINYL BASE: MATCH EXISTING JOHNSONITE MILLWORK CONTOURED BASE AND COLOR

SCOPE OF WORK

- RENOVATION OF SEVERAL ROOMS IN THIRD FLOOR CONDO MEDICAL OFFICE SUITE:
- ENLARGE ONE LAB
 - CREATE A NEW ADA BATHROOM
 - RECONFIGURE CABINETS IN SECOND LAB
 - RECONFIGURE BATHROOM INTO UTILITY ROOM
 - CONVERT A CLOSET INTO SPACE FOR SCOPE CABINET

PROJECT DATA

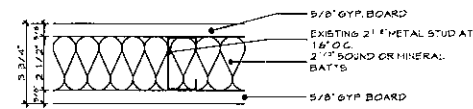
EXISTING THREE STORY BUILDING CONSTRUCTED IN 1988 (BOCA 1986)
THIRD FLOOR: 14,800 SF
TOTAL BUILDING: 40,360 SF

BUILDING OCCUPANCY: BUSINESS OFFICES
OCCUPANCY GROUP: IBC: B, BUSINESS
NFFA: EXISTING BUSINESS

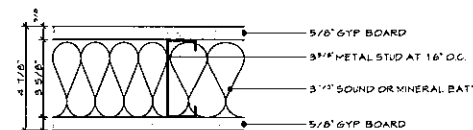
CONSTRUCTION TYPE: IBC: TYPE II B
NFFA: TYPE II 000

CLIMATE ZONE: 6A
AUTOMATIC FIRE SPRINKLER: YES
FIRE ALARM SYSTEM: YES, MONITORED

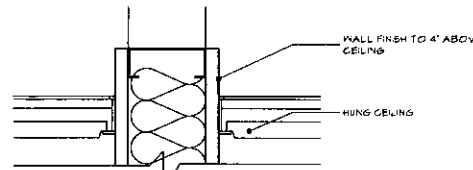
WALL TYPES



2 EXISTING PARTITION



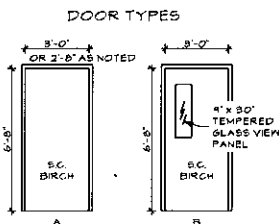
1 TYPICAL NEW 3 1/2\"/>



TYPICAL WALL DETAIL
SCALE 3/4\"/>

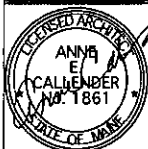
DOOR AND HARDWARE

DOOR SCHEDULE					
MARK	LOCATION	UNIT SIZE	TYPE	HARDWARE FUNCTION	NOTES/REMARKS
114	LAB	8'-0" x 6'-8"	B	TRILGY IV / DOOR CLOSER	
116	SOILED UTILITY	2'-8" OR 2'-8" x 6'-8"	A	TRILGY IV / DOOR CLOSER	REUSE EXISTING DOOR FROM EITHER EXISTING LAV
117	STAFF BATH	8'-0" x 6'-8"	A	PRIVACY	
134	UTILITY	8'-0" x 6'-8"	A	TRILGY IV / DOOR CLOSER	
109	LAB	EXISTING	B	EXISTING	PROVIDE NEW GLASS KIT FOR EXISTING DOOR



- HARDWARE NOTES**
- PROVIDE SILENCERS FOR ALL DOORS
 - DOOR STOPS TO BE WALL MOUNTED
 - OFFICE FUNCTION: PUSH BUTTON LOCKING, PUSH BUTTON LOCKS OUTSIDE LEVER UNTIL UNLOCKED BY KEY FROM OUTSIDE OR TURNING INSIDE LEVER.
 - PRIVACY FUNCTION: PUSH BUTTON LOCKING FROM INSIDE, PUSH BUTTON LOCKS OUTSIDE LEVER UNTIL UNLOCKED BY TURNING LEVER OR CLOSING DOOR.
 - CLASSROOM FUNCTION: KEY LOCKING, KEY IN OUTSIDE LEVER, LOCKS/UNLOCKS OUTSIDE LEVER, INSIDE LEVER ALWAYS UNLOCKED.
 - PASSAGE FUNCTION: LATCH BY EITHER LEVER
 - STOREROOM FUNCTION: DEADLOCKING LATCH, LATCH BY LEVER INSIDE OR KEY OUTSIDE, OUTSIDE LEVER RIGID AT ALL TIMES.
 - TRILGY: KEY PAD LEVER HANDSET FROM OUTSIDE, INSIDE LEVER ALWAYS UNLOCKED.

MMP OTOLARYNGOLOGY
1250 FOREST AVENUE
PORTLAND, MAINE



WHIPPLE - CALLENDER ARCHITECTS

128 PLEASANT AVE
PORTLAND, ME 04103
P 201.775.2646
F 201.775.3631
www.whipplecallender.com

DATE	DESCRIPTION
1/23/17	ISSUED FOR PERMITTING

DATE: 1/23/17
CHECKED BY: AEC
DRAWN BY: AEC
JOB: 16-OTO
SHEET TITLE: REFLECTED CEILING PLAN
DOOR SCHEDULE
WALL TYPES
NOTES

A1.0