

- ELECTRICAL AND LIFE SAFETY DEVICE LEGEND**
- - 
  - 
  - 
  - 
  - 
  - 
  - 
  - 
  - 
  - 
  - 
  - 
  - 
  - 
  - 
  - 
  - 
  - 
  -

**1 ELECTRICAL & LIFE SAFETY PLAN**  
SCALE: 1/4" = 1'-0"

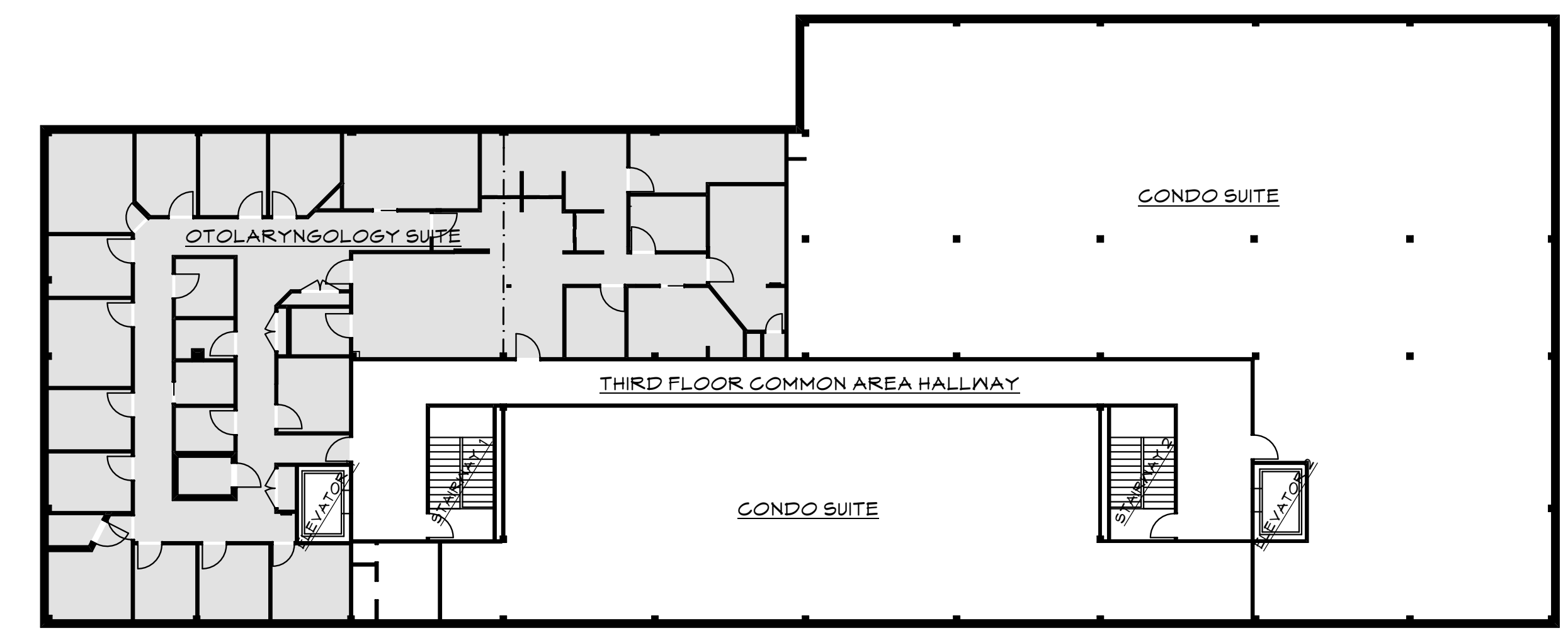
**PROJECT DATA**

EXISTING THREE STORY BUILDING CONSTRUCTED IN 1988 (BOCA 1986)  
 THIRD FLOOR: 14,800 SF  
 TOTAL BUILDING: 40,360 SF

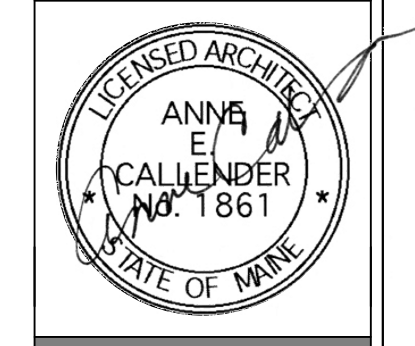
BUILDING OCCUPANCY: BUSINESS OFFICES  
 OCCUPANCY GROUP: IBC: B, BUSINESS  
 NPPA: EXISTING BUSINESS

CONSTRUCTION TYPE: IBC: TYPE II B  
 NPPA: TYPE II 000

CLIMATE ZONE: 6A  
 AUTOMATIC FIRE SPRINKLER: YES  
 FIRE ALARM SYSTEM: YES, MONITORED



**2 KEY PLAN - THIRD FLOOR**  
SCALE: 1/16" = 1'-0"



**WHIPPLE — CALLENDER ARCHITECTS**

196 PLEASANT AVE.  
 PORTLAND, ME 04103  
 P.207.715.2414  
 F.207.715.3631  
 www.whipplecallender.com

DATE	DESCRIPTION
1-21-13	PERMIT SET
1-30-13	REVISIONS TO PLAN
1-21-14	REVISIONS TO PLAN (UPDATE FOR PERMIT)
2-25-14	REVISIONS TO DOCTOR'S OFFICE LOS
3-7-14	ADDITION OF REF PLAN & PROJECT DATA

DATE: 21 JAN 2013  
 CHECKED BY: AEC  
 DRAWN BY: AEC  
 JOB: 12-TFA  
 SHEET TITLE: ELECTRICAL AND LIFE SAFETY PLAN  
 FIRST FLOOR OFFICE PLAN