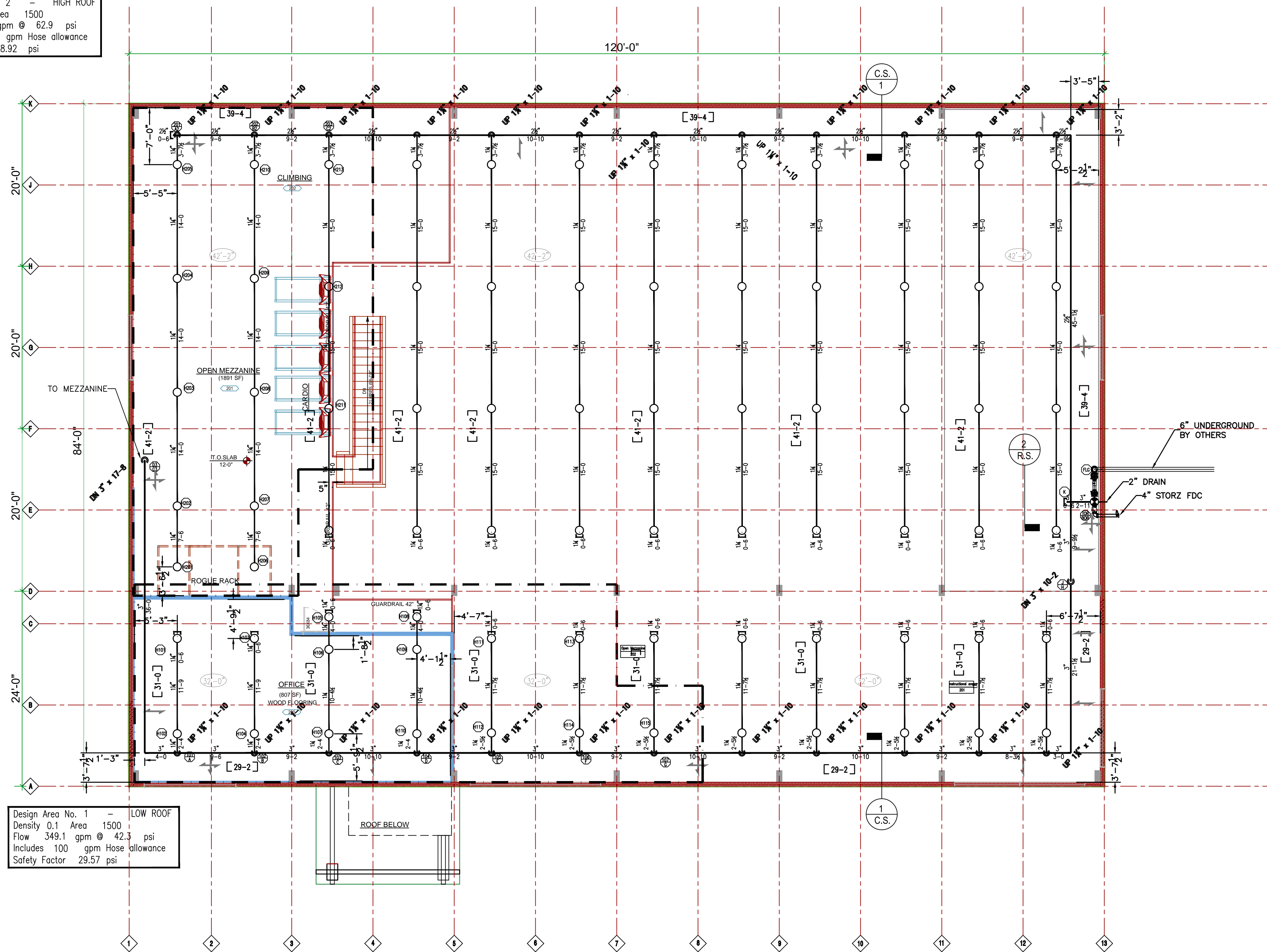


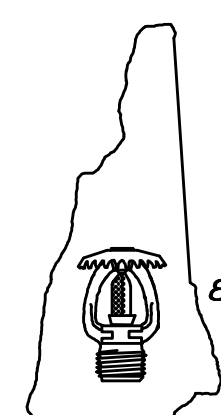
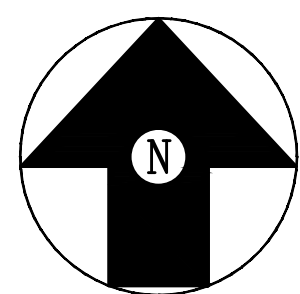
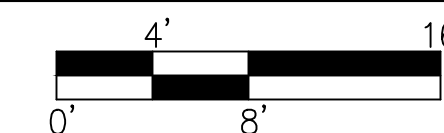
Design Area No. 2 - HIGH ROOF
 Density 0.1 Area 1500
 Flow 295.5 gpm @ 62.9 psi
 Includes 100 gpm Hose allowance
 Safety Factor 8.92 psi



Design Area No. 1 - LOW ROOF
 Density 0.1 Area 1500
 Flow 349.1 gpm @ 42.3 psi
 Includes 100 gpm Hose allowance
 Safety Factor 29.57 psi

ROOF FP PLAN

SCALE: 1/8" = 1'-0"



Hampshire
FIRE PROTECTION
 8 NORTH WENTWORTH AVENUE LONDONDERRY, NH 03053
 PH: (603) 432-8221 FAX: (603) 434-3194
 EMAIL: HAMPSHIRE@FIRE.MV.COM
 MASS LIC# 003841 MAINE LIC# 238
 VERMONT CERTIFIED

WATER SUPPLY DATA	
Static pressure	72 psi
Residual pressure	70 psi
Flow	1255 gpm
Location	HYD 01318
Elevation	-9'-0"
Date	5/2/2013 Time N/A
Information by	PORTLAND WD

SPRINKLERS	
Total This Sheet	76
Total This Job	107
Symbol	(1/2"K=5.6)
Description	RELIABLE FIFR56 155# BRASS QR SSU (SIN: RA1425)

Drawing	
Title	ROOF LEVEL FP PLAN
Contract No.	4480 CME
Drawn By	CRAIG S.
Scale	1/8" = 1'-0"
Date	1/22/2014
Approval By	STATE OF MAINE PORTLAND PD

Revisions	
1	
2	
3	
4	
5	
6	
7	

Project:
 EVOLUTION ROCKS PORTLAND
 65 WARREN AVE
 PORTLAND, ME, 04103
 Contract with:
 FLYNN CONSTRUCTION CORPORATION
 17 OLD NASHUA ROAD, SUITE 15
 AMHERST, NH 03031

FIRE PROTECTION ENGINEER STAMP

CUT