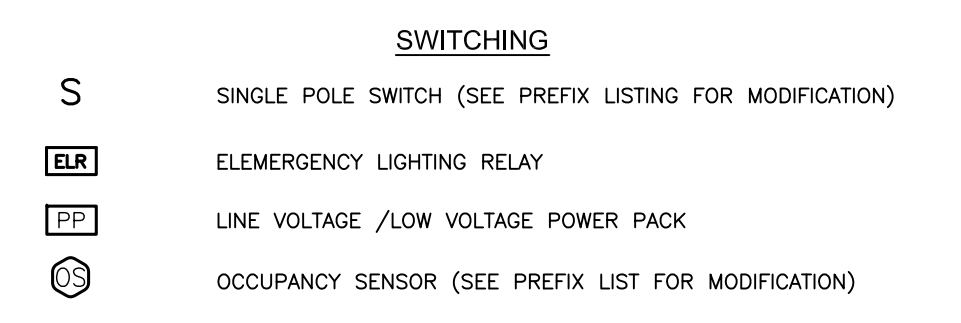
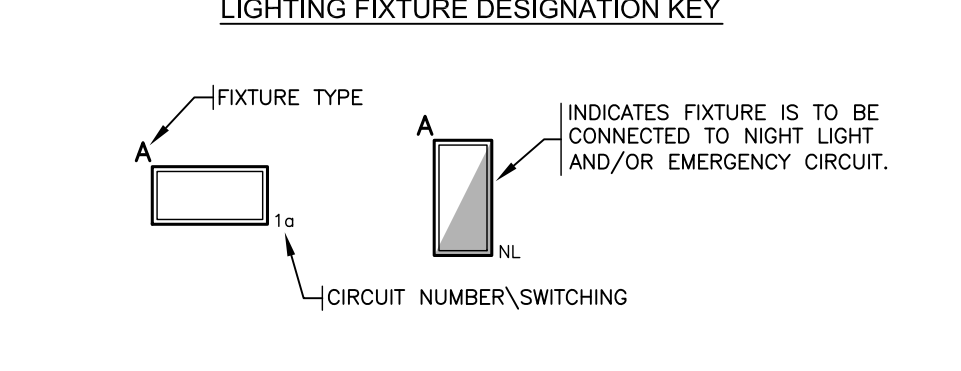
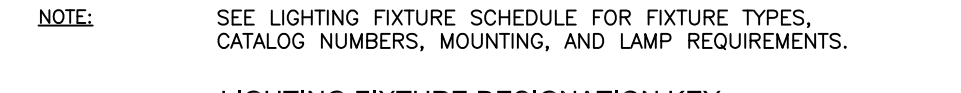
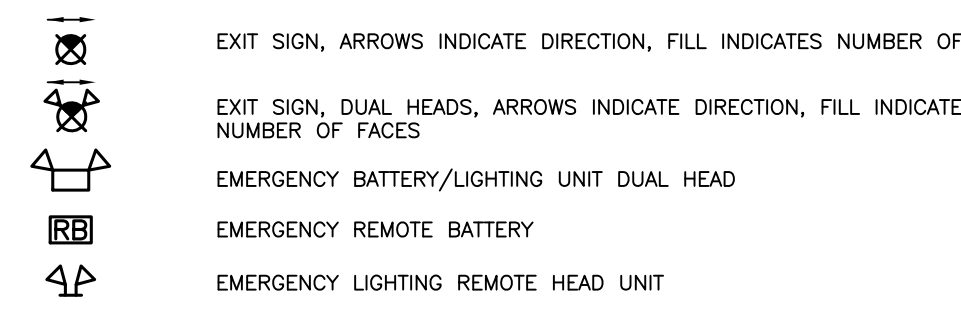
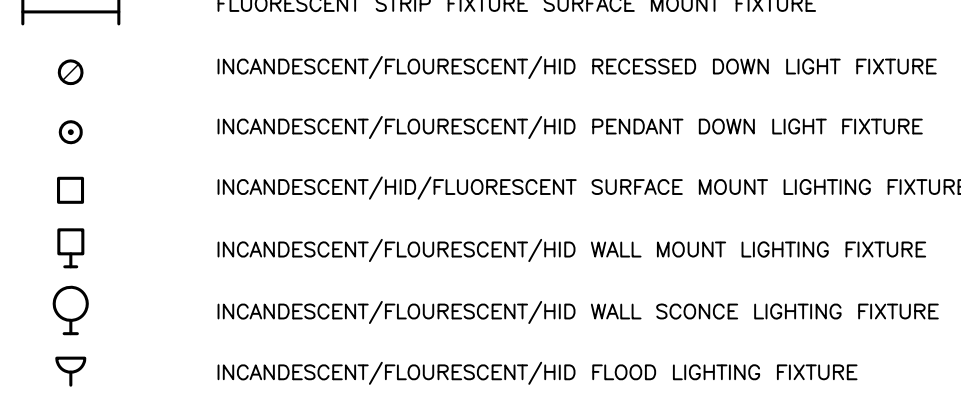
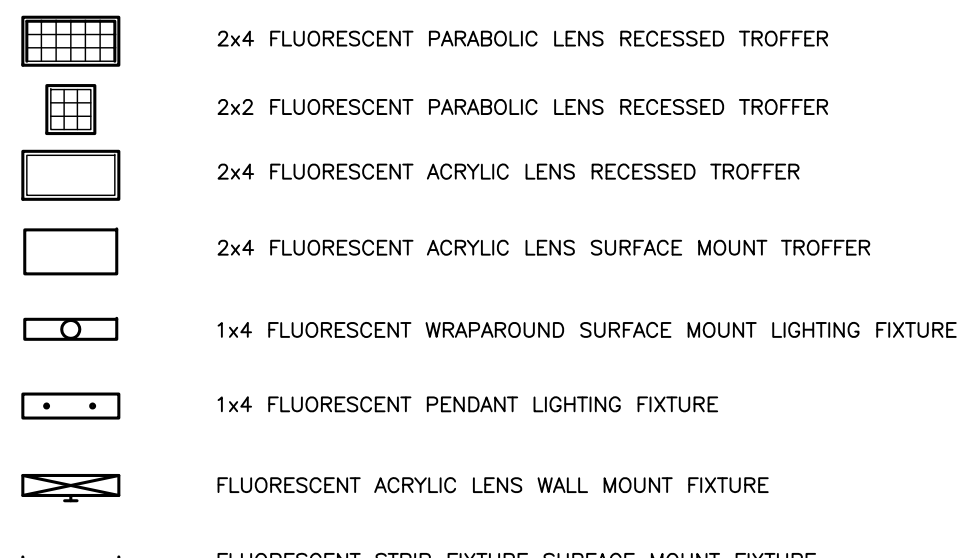


# LEGEND

## LIGHTING FIXTURES

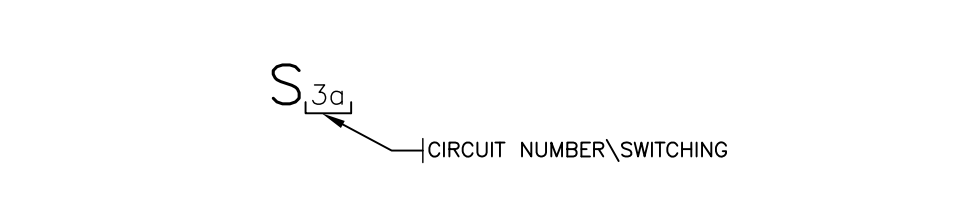


**NOTE:** 1. FOR GENERAL USE, OFFICES, OTHER, MEETING ROOMS, COMMON AREAS USE SPECIFICATION GRADE DEVICES WITH PLASTIC FINISH PLATE, EQUAL TO LEVITON CS SERIES 20A 120V/277V FLUSH MOUNTED (DEVICE COLOR: IVORY)  
2. FOR MECHANICAL, NON FINISH SPACES USE SPECIFICATION GRADE DEVICES WITH GALVANIZED STEEL PLATE, EQUAL TO LEVITON CS SERIES 20A 120V/277V SURFACE MOUNTED (DEVICE COLOR: IVORY)

## SWITCHING PREFIX LISTING

2	DOUBLE POLE	SV	SERVICE DISCONNECT
3	THREE WAY	OS	OCCUPANCY SENSOR
4	FOUR WAY	OB	OIL BURNER SHUT OFF
T	THERMAL OVERLOAD	FD	FLUORESCENT DIMMER
F	FAN	LV	LOW VOLTAGE
P	PILOT LIGHT	M	MOTOR RATED TOGGLE
K	KEYED	L	LIMIT
DT	DUAL TECHNOLOGY	US	ULTRASONIC

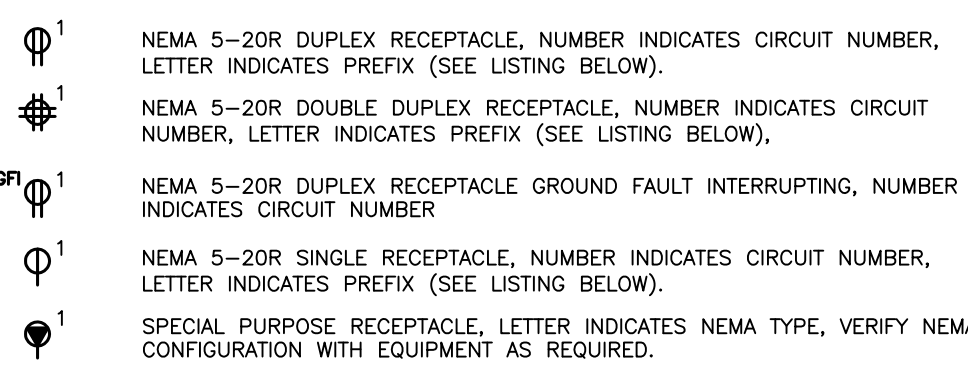
## LIGHTING SWITCH DESIGNATION KEY



## EXISTING EQUIPMENT CODES:

EXISTING DEVICE, FIXTURE, EQUIPMENT TO REMAIN.  
EXISTING DEVICE, FIXTURE, EQUIPMENT TO BE REMOVED AND BRANCH WIRING PULLED BACK TO NEXT ACTIVE OUTLET OF ITS ORIGIN, WHICHEVER IS CLOSEST.  
EXISTING DEVICE, FIXTURE, EQUIPMENT TO BE RELOCATED  
NEW LOCATION OF RELOCATED EXISTING DEVICE, FIXTURE, EQUIPMENT.  
EXISTING DEVICE, FIXTURE, EQUIPMENT TO BE REMOVED AND BRANCH WIRING MADE SAFE AT THIS LOCATION OR EXTENDED TO NEW EQUIPMENT LOCATION AS DETAILED.  
EXISTING DEVICE, FIXTURE, EQUIPMENT TO BE REWORKED, REPAIRED, OR REPLACED AT THIS LOCATION TO RESTORE SYSTEM TO ITS ORIGINAL OPERATION.  
NEW DEVICE, FIXTURE, OR EQUIPMENT  
EXISTING DEVICE, FIXTURE, OR EQUIPMENT ("OUT-OF-FUNCTION") SHOWN AT EXISTING LOCATION  
EXISTING DEVICE, FIXTURE, OR EQUIPMENT TO BE REWORKED AND/OR RELOCATED  
**NOTE:** EXISTING ELECTRICAL DEVICES, FIXTURES, EQUIPMENT SHOWN "OUT-OF-FUNCTION" REPRESENT WORK OF A PREVIOUS CONTRACT. THIS IS NOT AN AS-BUILT DRAWING. ANY EXISTING ELECTRICAL EQUIPMENT THAT IS NOT IN COMPLIANCE WITH THE LOCALLY ACCEPTED VERSION OF NFPA 70 IS NOT INCLUDED AS PART OF THIS CONTRACT, UNLESS SPECIFICALLY NOTED.

## POWER/GROUNDING RECEPTACLES AND OUTLETS

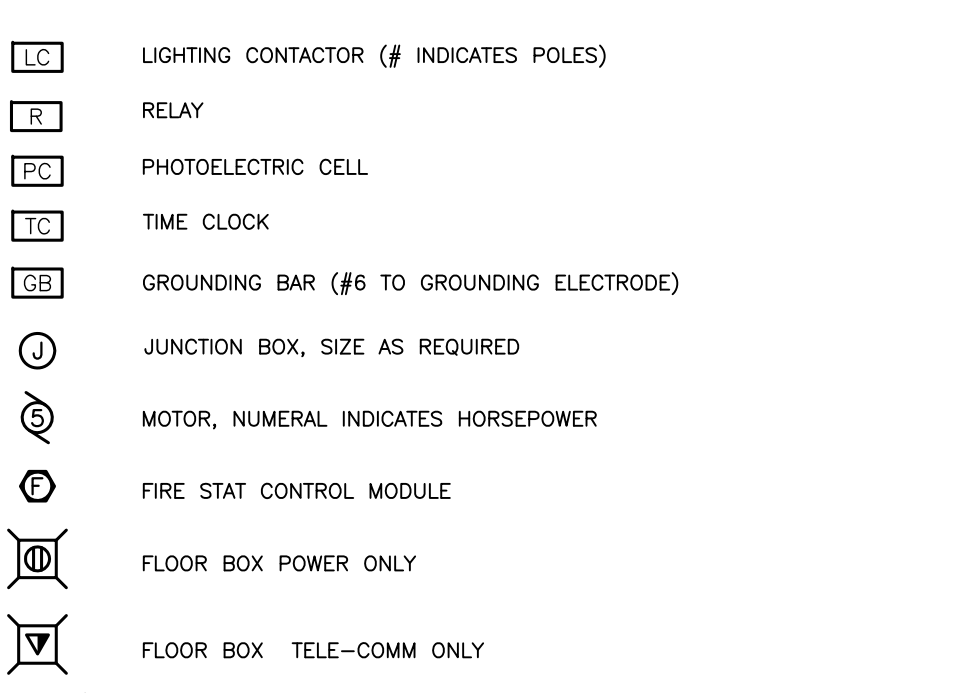


**NOTE:** 1. FOR GENERAL USE, OFFICES, OTHER, MEETING ROOMS, COMMON AREAS USE SPECIFICATION GRADE DEVICES WITH PLASTIC FINISH PLATE, EQUAL TO LEVITON CR SERIES 20A 125V FLUSH MOUNTED (DEVICE COLOR: IVORY)  
2. FOR MECHANICAL, NON FINISH SPACES USE SPECIFICATION GRADE DEVICES WITH GALVANIZED STEEL PLATE, EQUAL TO LEVITON CR SERIES 20A 125V SURFACE MOUNTED (DEVICE COLOR: IVORY)

## RECEPTACLE PREFIX LISTING

C	COUNTER TOP MOUNTED	HG	HOSPITAL GRADE
CD	CORD DROP	HV	HOOD VENT
CL	CLOCK	IG	ISOLATED GROUND
CM	CEILING MOUNTED	MW	MICROWAVE
D	DEDICATED	P	PEDESTAL
DW	DISHWASHER	PT	PIKE TIRRU
DR	DRYER	RNG	RANGE
EW	ELECTRIC WATER COOLER	SS	SURGE SUPPRESSOR
EXP	EXPLOSION PROOF	TR	TAMPER RESISTANT
GD	GARBAGE DISPOSAL	TV	TELEVISION
GFI	GROUND FAULT INTERRUPTER	WP	WEATHERPROOF

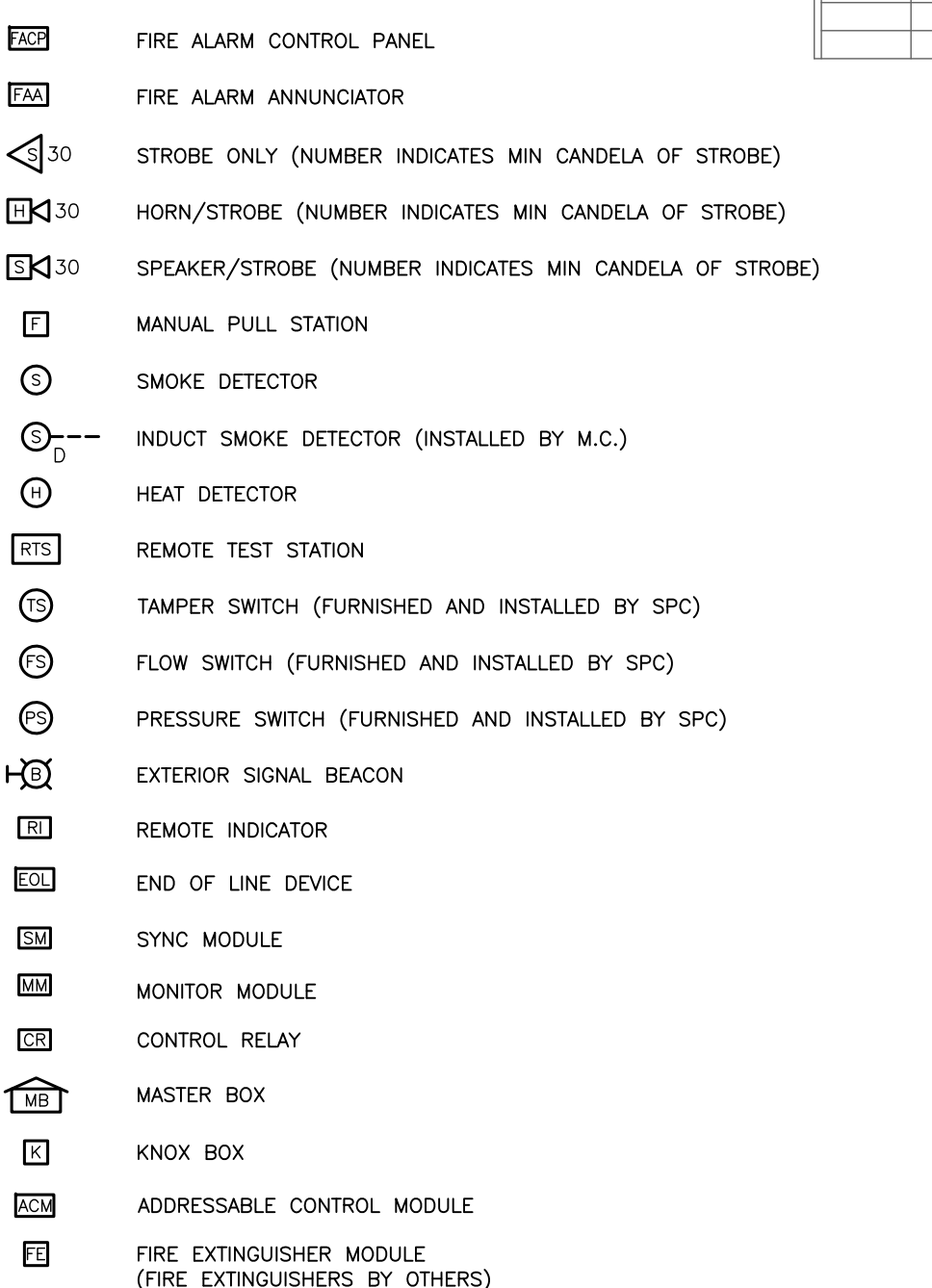
## MISCELLANEOUS POWER AND EQUIPMENT



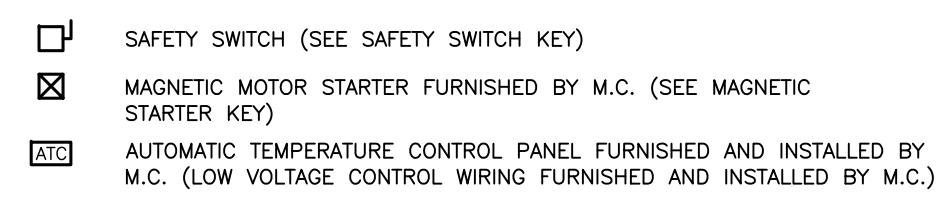
## TELECOMMUNICATION DEVICES

TELEPHONE OUTLET- PROVIDE SINGLE GANG PLASTER RING AND PULL STRING TO ABOVE ACCESSIBLE CEILING. "W" INDICATES OUTLET FOR WALL MOUNT DEVICE "P" INDICATES PAY PHONE DEVICE SET AT 54" A.F.F.  
TELE/DATA OUTLET- PROVIDE SINGLE GANG PLASTER RING AND PULL STRING TO ABOVE ACCESSIBLE CEILING.  
DATA OUTLET- PROVIDE SINGLE GANG PLASTER RING AND PULL STRING TO ABOVE ACCESSIBLE CEILING.  
**NOTE:** E.C. TO PROVIDE PLASTER RING, AND PULL STRING FOR USE BY OTHERS, DEVICES, EQUIPMENT, CABLING, TERMINATIONS AND TESTING FURNISHED AND INSTALLED COMPLETE BY OTHERS.

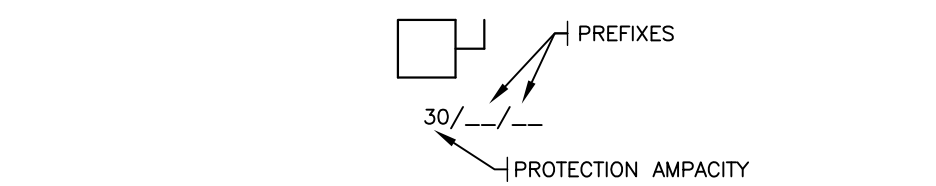
## FIRE ALARM DEVICES



## MECHANICAL EQUIPMENT



## SAFETY SWITCH DESIGNATION KEY

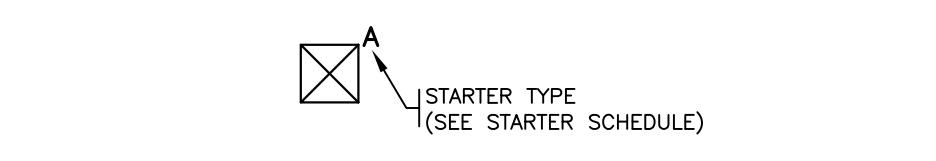


**NOTES:** 1. VOLTAGE, CURRENT, AND QUANTITY OF TERMINATION POLES SHALL MEET OR EXCEED THE SOURCE CAPACITY AND WIRING REQUIREMENTS OF THE BRANCH CIRCUIT.  
2. ALL MOTOR STARTERS FOR MECHANICAL EQUIPMENT ARE FURNISHED AND INSTALLED BY M.C., WIRED BY E.C., COORDINATE WITH HVAC DRAWINGS.  
3. ALL DISTRIBUTION EQUIPMENT SHALL HAVE ADHESIVE BACKED IDENTIFICATION LABELS.  
4. COORDINATE FUSE SIZE AND TYPE PER EQUIPMENT NAME PLATE.

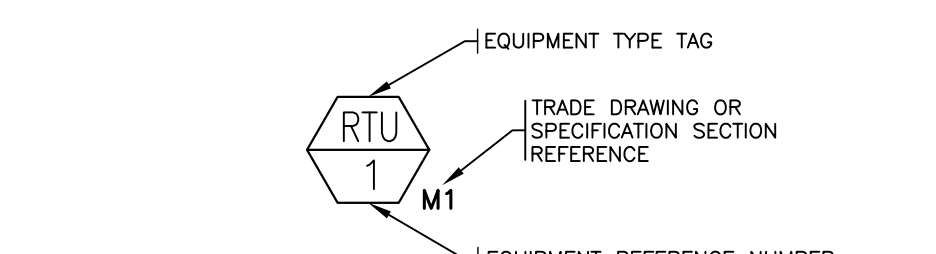
## SAFETY SWITCH PREFIX LISTING

CB	CIRCUIT BREAKER	NF	NON-FUSED
F	FUSED	T	THERMAL OVERLOAD
MP	HACR BREAKER	WP	WEATHER PROOF

## MAGNETIC STARTER DESIGNATION KEY



## EQUIPMENT DESIGNATION KEY



## LIGHTING FIXTURE SCHEDULE

TYPE	MANUFACTURER	CATALOG NO.	LAMPS	VOLTS	WATTS	MOUNTING	DESCRIPTION
A	METALUX	WN-232A-UV-EB81	(2) F32T8	120	65	SURFACE/CEILING	4' FLUORESCENT ACRYLIC WRAPAROUND
B	METALUX	SSF-232-UV-HB81N-WG/SSF4FT	(2) F28T8	120	65	SUSPENDED/CEILING	4' FLUORESCENT STRIP W/WIRE GUARD
C	METALUX	HBI-654HT5-L5	(6) F54T5HO	120	351	SUSPENDED/CEILING	HIGH OUTPUT FLUORESCENT HI-BAY
D	BRUCK	360075MC (3 HEAD SET)	(3) 20W MR16	120/12	60	SURFACE/CEILING	2' LV TRACK KIT W/3 SPOT TRACK HEADS
E	BRUCK	340096MC (5 HEAD SET)	(3) 50W MR16	120/12	250	SURFACE/CEILING	8' LV TRACK KIT W/5 SPOT TRACK HEADS
F	TERON	VENS-F2260-120E-PSL-AL-35K	(2) F226Q	120	45	SURFACE/WALL	COMPACT FLUORESCENT DECORATIVE WALL SCONCE
F1	TERON	VENS-F2260-120E-PSL-AL-DIM-35K	(2) F226Q	120	45	SURFACE/WALL	COMPACT FLUORESCENT DECORATIVE WALL SCONCE (DIMMABLE)
G	TERON	AR24-217E-120E-SM	(2) F17T8	120	36	SURFACE/WALL	2' FLUORESCENT DECORATIVE WALL BRACKET
W1	MCGRAW EDISON	IST-B02-LED-E1-BL3-BZ	(2) 21W LED	120	42	SURFACE/WALL	EXTERIOR LED WALL PACK TYPE III DISTRIBUTION
W2	MCGRAW EDISON	IST-B02-LED-E1-BL4-BZ	(2) 21W LED	120	42	SURFACE/WALL	EXTERIOR LED WALL PACK TYPE IV DISTRIBUTION
EX	SURE-LITES	LPXH-7-DH	(2) 5.4W INC.	120	7.8	UNIVERSAL	SELF CONTAINED EXIT SIGN W/DUAL HEADS & REMOTE CAPACITY
ER	SURE-LITES	6X54DWHH	(2) 5.4W INC.	6	10.8	SURFACE/WALL	EMERGENCY WEATHER PROOF REMOTE HEAD
EBU1	SURE-LITES	CC2	(2) 5.4W INC.	120	14.4	SURFACE/WALL	EMERGENCY BATTERY UNIT

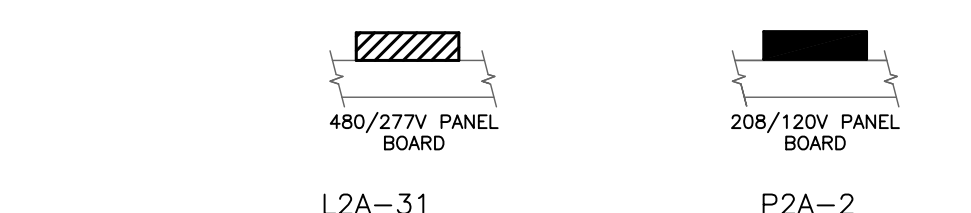
## LIGHTING FIXTURE NOTES

1) MANUFACTURERS AND CATALOG NUMBERS INDICATE QUALITY AND INTENT OF LIGHTING FIXTURES TO BE FURNISHED AND ARE NOT INTENDED TO LIMIT ALTERNATE MANUFACTURERS.  
2) BALLAST FOR FLUORESCENT FIXTURES SPECIFIED WILL BE HIGH PERFORMANCE TYPE ELECTRONIC WITH T8 OR T5 LAMPS AND BEAR CBM-ETL LABEL.  
3) REVIEW ARCHITECTURAL DRAWING TO COORDINATE FIXTURE MOUNTING AND FINISH CEILING MATERIAL PRIOR TO ORDERING FIXTURES.  
4) LIGHTING SUPPLIER SHALL COORDINATE COMPACT FLUORESCENT LAMP BASE TYPE WITH FIXTURE LAMP SOCKET AND BALLAST TYPE PER MANUFACTURE'S REQUIREMENTS  
5) LIGHTING SUPPLIER SHALL COORDINATE HID LAMP BASE TYPE AND BURNING POSITION WITH FIXTURE LAMP SOCKET TYPE AND POSITION PER MANUFACTURE'S REQUIREMENTS

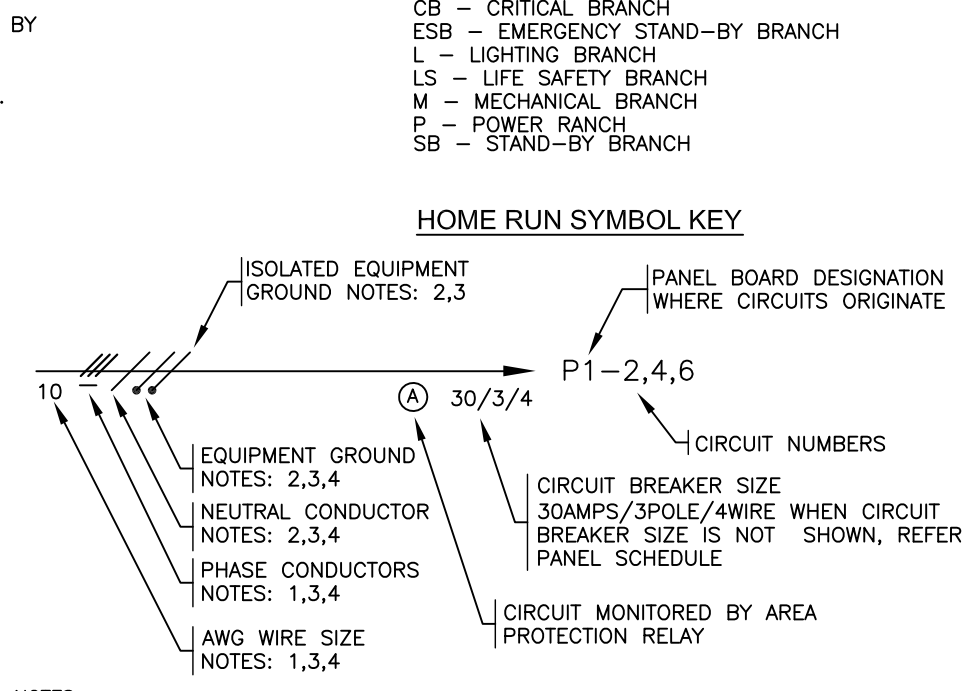
## ABBREVIATIONS

AF	ABOVE FINISHED FLOOR	GF	FLEXIBLE METALLIC CONDUIT	PWR	POWER
AFG	ABOVE FINISHED GRADE	GRS	GALVANIZED RIGID STEEL CONDUIT	RSC	RIGID STEEL CONDUIT
BLDG	BUILDING	HVAC	HEATING/VENTILATING AIR CONDITIONING	S.P.C.	SPRINKLER CONTRACTOR
C/L	CENTER LINE	IMC	INTERMEDIATE METAL CONDUIT	ST	PVC COATED FLEXIBLE CONDUIT
CKT	CIRCUIT	LF	LINEAR FEET	TBB	TELEPHONE BACKBOARD
CM	CEILING MOUNTED	LTG	LIGHTING	TMH	TELEPHONE MANHOLE
EF	EXHAUST FAN	MC	METAL CLAD CABLE	TP	TWISTED PAIR
ELEC	ELECTRICAL	M.C.	MECHANICAL CONTRACTOR	TSP	TWISTED SHIELDED PAIR
E.C.	ELECTRICAL CONTRACTOR	MECH	MECHANICAL CONTRACTOR	UG	UNDER GROUND
EMT	ELECTRICAL METALLIC TUBING	NL	NIGHT LIGHT	UGA	UNDER GROUND FIRE ALARM
ENT	ELECTRICAL NONMETALLIC TUBING	NEC	NATIONAL ELECTRIC CODE	UGPE	UNDER GROUND PRIMARY ELECTRIC
ENC	ELECTRIC WATER COOLER	NFPA	NATIONAL FIRE PREVENTION AGENCY	UGSE	UNDER GROUND SECONDARY ELECTRIC
EQUP	EQUIPMENT	N.T.S.	NOT TO SCALE	UOT	UNDER GROUND TELECOMMUNICATIONS
FBO	FURNISHED BY OTHERS	DEM	ORIGINAL EQUIPMENT MANUFACTURE	UON	UNLESS OTHERWISE NOTED
G	GROUNDING CONDUCTOR	P.C.	PLUMBING CONTRACTOR	US	UNDER SLAB
G.C.	GENERAL CONTRACTOR	PVC	POLY VINYL CHLORIDE	WP	WEATHER PROOF

## PANEL BOARD SYMBOL KEY



## HOME RUN SYMBOL KEY



**NOTES:** 1. WIRE SIZE IS BASED ON THE NATIONAL ELECTRICAL CODE, NFPA 70-2011, TABLE 310-16, COLUMN 75° C (167° F) FOR COPPER CONDUCTORS.  
2. WIRE SIZE IS BASED ON THE NATIONAL ELECTRICAL CODE, NFPA 70-2008, TABLE 250-122 (A) THROUGH (F), FOR COPPER CONDUCTORS.  
3. WHEN NO SLASHES OR WIRE SIZES ARE SHOWN, WIRES SHALL CONSIST OF ONE PHASE, ONE NEUTRAL, AND ONE EQUIPMENT GROUND, WIRE SIZE AWG 12 MINIMUM, REFER TO PANEL SCHEDULES FOR CIRCUIT AMPACITY.  
4. SLASHES MAY BE REPLACED BY NUMERICAL IDENTIFICATION (EXAMPLE: 2#8, #8G-3/4")  
5. METALLIC CONDUIT MAY BE USED AS EQUIPMENT GROUND IN ACCORDANCE WITH NEC ARTICLE 250-118.

## GENERAL NOTES

- CONDUITS AND CIRCUITRY INDICATED ON THE DRAWINGS ARE DIAGRAMMATIC ONLY AND DO NOT INDICATE SPECIFIC ROUTES, SPECIFIC CONDITIONS OR HOMERUNS. FINAL ROUTING SHALL BE COORDINATED IN THE FIELD TO AVOID CONFLICTS WITH OTHER TRADES. PULLING FITTINGS AND BOXES IN ADDITION TO THOSE DETAILED SHALL BE ADDED TO MAINTAIN NO MORE THAN 360° BETWEEN PULLING POSITIONS. CLEAR ACCESS TO PULLING POSITIONS SHALL BE MAINTAINED.
- EXPOSED EQUIPMENT AND RACEWAYS SHALL BE INSTALLED LEVEL AND PLUMB.
- EXPOSED RACEWAYS SHALL RUN PARALLEL OR PERPENDICULAR TO BUILDING WALLS AND OR STRUCTURAL MEMBERS.
- EXACT LOCATION OF DOORS, TRANSOMS, WINDOWS, CASEWORK, PLUMBING FIXTURES ETC. IN FINISHED AREAS SHALL BE COORDINATED IN THE FIELD WITH OTHER TRADES.
- EXACT LOCATION OF EQUIPMENT WITHIN MECHANICAL SPACES, CEILINGS AND FLOOR VOIDS ABOUT MECHANICAL EQUIPMENT SHALL BE COORDINATED IN THE FIELD WITH OTHER TRADES.
- ALL ELECTRICAL WORK TO BE INSTALLED BY LICENSED ELECTRICIANS IN ACCORDANCE WITH NFPA 70 2011 NATIONAL ELECTRICAL CODE (NEC), NFPA 101 2009 LIFE SAFETY CODE AND ALL APPLICABLE STATE AND LOCAL CODES AND REGULATIONS.
- LIGHTING AND POWER SYSTEM TO BE INSTALLED IN ACCORDANCE WITH THE REQUIREMENTS OF THE STATES ENERGY EFFICIENCY CODE AND LOCAL REGULATIONS.
- ALL EQUIPMENT AND WIRING SHALL BE SUSPENDED FROM AND/OR TO THE BUILDING STRUCTURE.
- SEE MOUNTING HEIGHT DETAIL FOR WALL MOUNTED EQUIPMENT AND DEVICE MOUNTING HEIGHTS.
- SEE LIGHTING FIXTURE SCHEDULE AND DESIGNATION DETAIL FOR FIXTURE TYPE, BRANCH CIRCUIT, SWITCH CONTROL AND PHASING.
- PROVIDE ADHESIVE BACKED IDENTIFICATION LABELS ON ALL ELECTRICAL DISTRIBUTION EQUIPMENT INCLUDING PANEL BOARDS AND DISCONNECTS

## WIRING METHODS SCHEDULE

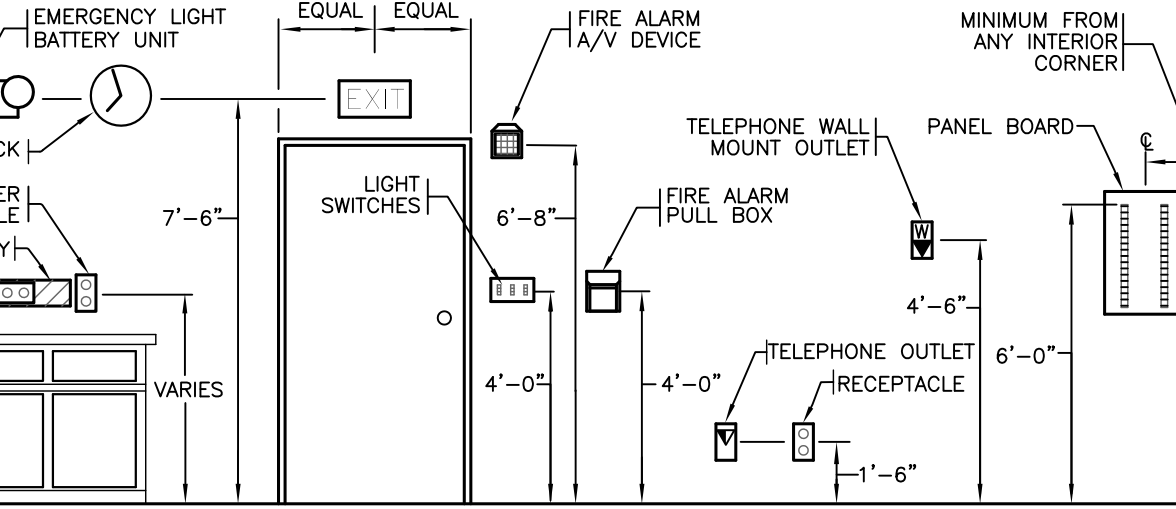
LOCATION	RACEWAY	FITTINGS	SUPPORTS (NOTE 2)	REMARKS
UNDERGROUND	PVC-SHC 40	GLUED	N/A	(2)(3)(4)
EXPOSED EXTERIOR	PVC-SCH 40	GLUED	SEE TABLE 347-B	(1)
EXPOSED INTERIOR	EMT	DIE CAST SET SCREW CLAMP	3'/10' 1'/6"	
CONCEALED INTERIOR FEEDERS	EMT	DIE CAST SET SCREW CLAMP	3'/10' 1'/6"	
CONCEALED INTERIOR BRANCH	MC CABLE	DIE CAST CLAMP	1'/6"	

## WIRING METHODS NOTES

- NOTES:**
- WIRING METHODS AND MATERIALS TO BE PROVIDED IN ACCORDANCE WITH APPLICABLE SECTIONS OF NEC ARTICLE 300
  - FLEXIBLE METALLIC CONDUIT (LIQUID TIGHT WHERE SUBJECT TO MOISTURE) SHALL BE UTILIZED BETWEEN NON-FLEXIBLE AND VIBRATING COMPONENTS, IN ACCORDANCE WITH NFPA-70-2011 PER ARTICLES 348 & 350.
  - MAXIMUM DISTANCE FROM CONNECTOR OR COUPLING/MAXIMUM DISTANCE BETWEEN SUPPORTS PER NFPA 70.
  - EXPANSION FITTINGS AS SUGGESTED BY THE MANUFACTURER AND/OR AS REQUIRED BY PROJECT.
  - BENDS SHALL NOT EXCEED FOUR QUARTER BENDS (360° DEGREES TOTAL) BETWEEN PULL POINTS, CONDUIT BODIES OR BOXES CLEAR PULLING POSITIONS SHALL BE MAINTAINED.
  - CONDUIT PENETRATIONS AND ELECTRICAL INSTALLATIONS SHALL BE MADE AS REQUIRED TO LIMIT THE SPREAD OF FIRE AND PRODUCTS OF COMBUSTION IN ACCORDANCE WITH SECTION 300.21.
  - CONDUIT PENETRATIONS THROUGH FIRE RATED ASSEMBLIES SHALL BE SEALED WITH A U.L. LISTED FIRE STOPPING SYSTEM INSTALLED PER MANUFACTURES RECOMMENDATIONS.

## REMARKS:

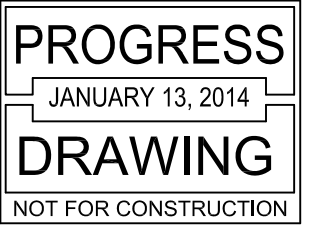
- USE PVC SCHD 80, IMC, OR, GRC AS REQUIRED OR WHERE SUBJECT TO DAMAGE.
- SEE TRENCH DETAIL FOR PLACEMENT, ELEVATION AND WARNINGS.
- COORDINATE UTILITY REQUIREMENTS WHERE APPLICABLE.
- UNDER GROUND CONDUITS TO BE 3/4" DIAMETER MINIMUM.



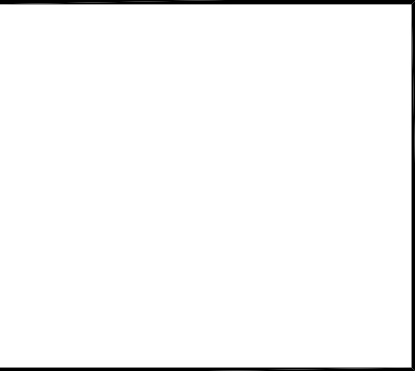
## TYPICAL MOUNTING LOCATIONS

## MOUNTING LOCATION NOTES:

- MOUNTING HEIGHTS ARE TO CENTER OF DEVICE AND TYPICAL UNLESS OTHERWISE NOTED.
- MOUNTING HEIGHTS FOR CONTROL DEVICES/OPERATING MECHANISMS SHALL CONFORM TO APPLICABLE REQUIREMENTS OF THE AMERICANS WITH DISABILITIES ACT ACCESSIBILITY GUIDE LINES SECTION 205 AND 309.
- MOUNTING HEIGHTS FOR FIRE ALARM SIGNALING APPLIANCES SHALL CONFORM TO APPLICABLE REQUIREMENTS OF THE AMERICANS WITH DISABILITIES ACT ACCESSIBILITY GUIDE LINES SECTION 215 AND 702.
- MOUNTING HEIGHTS FOR OUTLETS SERVING ACCESSIBLE TELEPHONES SHALL CONFORM TO APPLICABLE REQUIREMENTS OF THE AMERICANS WITH DISABILITIES ACT ACCESSIBILITY GUIDE LINES SECTION 217 AND 704.
- COORDINATE AND VERIFY COUNTER TOP AND BACK SPLASH HEIGHTS IN FIELD WITH MILL WORK CONTRACTOR.
- MOUNTING HEIGHTS SHOWN ARE BASED ON CEILING HEIGHTS GREATER THAN 8'-0" COORDINATE DEVICE LOCATION IN AREAS WITH LOWER CEILINGS.



NO.	ISSUE/REVISION	DATE	BY
1	ISSUED FOR PROGRESS	1/13/14	JLEESARD



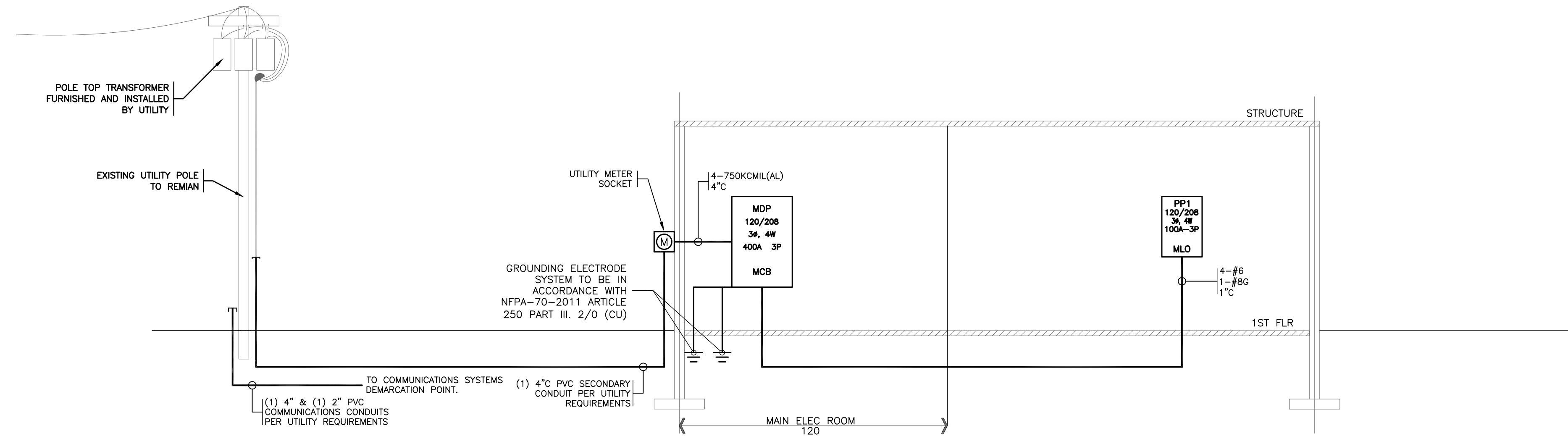
**Interstate Electrical Services**  
THE DIFFERENCE IS ATTITUDE  
15 GORRIS LANE BEDFORD, N.H. 03110  
P: (603) 882-9262 FAX: (603) 882-9666  
www.iesect.com

**EVO ROCK & FITNESS**  
65 WARREN AVE  
PORTLAND, MAINE

DATE: 12-6-13  
DRAWN BY: B.HARLOW  
DESIGNED BY: M.WHITE  
CHECKED BY: M. WHITE  
SCALE: AS SHOWN  
PROJECT NUMBER: ---

## LEGEND SCHEDULES NOTES AND KEYS

DRAWING NUMBER  
**E1**  
SHEET 1 OF 4



- POWER RISER NOTES:**
- 1.) CALCULATED AVAILABLE FAULT CURRENT AT THE SERVICE ENTRANCE IS ??,000 AMPS RMS SYMMETRICAL AT 208 VOLTS. FULLY RATE MAIN DISTRIBUTION PANEL (MDP) FOR A MINIMUM SHORT CIRCUIT INTERRUPT RATING OF ??,000 AMPS RMS SYMMETRICAL AT 208 VOLTS.
  - 2.) ALL NEW SUB PANELS FED FROM CIRCUIT BREAKERS IN MDP SHALL BE SERIES RATED FOR ??,000 AMPS PER UL STANDARDS IN ACCORDANCE WITH NEC SECTION 110-9, AND 110-10.
  - 3.) PROVIDED NEW 400A SELF-COORDINATED METER SOCKET, COORDINATED APPROVED METER SOCKET, MOUNTING AND LOCATION WITH APPLICABLE UTILITY STANDARDS. PROVIDE GROUNDING ELECTRODE SYSTEM AND BONDING CONNECTIONS AS REQUIRED PER NEC 250 PART III AND CMP STANDARDS.
  - 4.) PROVIDE (1) 4" SCHD 40 PVC SECONDARY CONDUITS AND CONDUCTORS SIZED IN ACCORDANCE WITH NEC 310.15B FROM UTILITY POLE TO METER SOCKET. COORDINATE UNDERGROUND SECONDARY AND POLE RISER REQUIREMENTS WITH CMP STANDARDS.
  - 5.) PROVIDE (1) 4" SCHD 40 PVC SECONDARY CONDUIT AND CONDUCTORS SIZED IN ACCORDANCE WITH NEC 310.15B FROM METER SOCKET TO PANEL MDP. COORDINATE MOUNTING LOCATION OF METER SOCKET WITH CMP STANDARDS.
  - 6.) PROVIDE (1) 4" SCHD 40 PVC TELECOMM SERVICE CONDUITS AND (1) 2" CATV SERVICE CONDUIT WITH PULL LINES IN ACCORDANCE WITH UTILITY STANDARDS FROM UTILITY POLE TO DEMARCATON POINT FOR BUILDING SERVICES TO BE PROVIDED BY OTHERS.

**1 ELECTRICAL RISER DAIGRAM**  
NOT TO SCALE

PANEL MDP														
VOLTAGE (L-N):		120		ENCLOSURE TYPE:		NEMA 1								
VOLTAGE (L-L):		208		MOUNTING:		SURFACE								
PHASES, WIRES:		3 Ø 4 W		AIC RATING (A):		0								
MINIMUM BUS CAPACITY (A):		400 A		NOTES:		----								
MAIN O.C. DEVICE (A):		400 A												
CKT NO	DESCRIPTION	TRIP AMPS	POLE	PHASE LOADS (VA)						POLE	TRIP AMPS	DESCRIPTION	CKT NO	
				A	B	C	PHASE	PHASE	PHASE					
1	TC 1	20	1	1370	360	0	0	0	0	1	20	RECEPTS, MECH/POWERWASH	2	
3	----	20	1	0	0	0	0	0	0	1	20	----	4	
5	----	20	1	0	0	0	0	0	0	1	20	----	6	
7	EMERG/MECH RM LTG/EXITS/EBUS	20	1	566	0	0	0	0	0	1	20	----	8	
9	FIRST FLOOR LTG-LCP RELAY 1	20	1	0	1404	0	0	0	0	1	20	----	10	
11	FIRST FLOOR LTG-LCP RELAY 2	20	1	0	0	1755	0	0	0	1	20	----	12	
13	FIRST FLOOR LTG-LCP RELAY 3	20	1	1755	0	0	0	0	0	1	20	----	14	
15	FIRST FLOOR LTG-LCP RELAY 4	20	1	0	1404	0	0	0	0	1	20	----	16	
17	LTG-MEZZANINE VIA LCP RELAY 5	20	1	0	0	1755	0	0	0	1	20	----	18	
19	LTG-MEZZANINE-LCP RELAY 6	20	1	702	0	0	0	0	0	1	20	----	20	
21	GEAR SHOP LTG/WALL SCONCES	20	1	0	375	0	0	0	0	1	20	----	22	
23	EXTERIOR DOOR LIGHTS	20	1	0	0	126	0	0	0	1	20	----	24	
25	----	20	1	0	0	0	0	0	0	1	20	----	26	
27	----	20	1	0	0	0	0	0	0	1	20	----	28	
29	----	20	1	0	0	0	0	0	0	1	20	----	30	
31,33,35	VNT 1	20	3	733	300	0	0	0	0	3	20	ERV 1	32,34,36	
31,33,35	VNT 1	20	3	0	733	300	0	0	0	3	20	ERV 1	32,34,36	
31,33,35	VNT 1	20	3	0	0	733	300	0	0	3	20	ERV 1	32,34,36	
37,39,41	RTU 1	100	3	9500	8771	0	0	0	0	3	100	PANEL PP1	38,40,42	
37,39,41	RTU 1	100	3	0	9500	11344	0	0	0	3	100	PANEL PP1	38,40,42	
37,39,41	RTU 1	100	3	0	0	9500	6913	0	0	3	100	PANEL PP1	38,40,42	
				CONNECTED LOAD PHASE TOTALS (VA)										
				24057	25060	21082								
				CONNECTED LOAD (KVA)	69.3	DEMAND FACTOR	1.00	DEMAND LOAD (KVA)	69.3					
				Standard	69.3	DEMAND FACTOR	1.00	DEMAND LOAD (KVA)	69.3	DEMAND LOAD	26.1 KVA			
										SPARE CAPACITY	9.9 KVA			
										SPARE CAPACITY	207.7 AMPS			
										SPARE CAPACITY	52%			
										PHASE BALANCE	A TO B	77%		
											B TO C	61%		
											C TO A	79%		
				TOTAL:	69.3			69.3						
				LOAD (AMPS):	192.3			192.3						

PANEL PP1													
VOLTAGE (L-N):		120		ENCLOSURE TYPE:		NEMA 1							
VOLTAGE (L-L):		208		MOUNTING:		SURFACE							
PHASES, WIRES:		3 Ø 4 W		AIC RATING (A):		0							
MINIMUM BUS CAPACITY (A):		100 A		NOTES:		----							
MAIN O.C. DEVICE (A):		100 A											
CKT NO	DESCRIPTION	TRIP AMPS	POLE	PHASE LOADS (VA)						POLE	TRIP AMPS	DESCRIPTION	CKT NO
				A	B	C	PHASE	PHASE	PHASE				
1	LIGHTING-101,103,104	20	1	1081	2500	0	0	0	0	2	30	DRYER RECEIPT-103	2,4
3	LTG-105,106,107	20	1	0	1161	2500	0	0	0	2	30	DRYER RECEIPT-103	2,4
5	LIGHTING-200	20	1	0	0	450	1080	0	0	1	20	RECEPTS-101, 102	6
7	TRACK LIGHTING-102	20	1	1120	180	0	0	0	0	1	20	PRINTER RECEIPT-101	8
9	LIGHTING-106,107	20	1	0	360	180	0	0	0	1	20	QUAD RECEIPT-SERVER-103	10
11	ERV 2	20	1	0	0	400	1500	0	0	1	20	WASHER RECEIPT-103	12
13	----	20	1	0	1260	0	0	0	0	1	20	RECEPTS-104,105,106,107	14
15	FRN 1	20	1	0	1750	180	0	0	0	1	20	BRKRM COUNTER RECEIPT-106	16
17,19	HEAT PUMP 1B	20	2	100	180	0	0	1000	0	1	20	OVEN/MICRO-BRKRM-106	18
17,19	HEAT PUMP 1B	20	2	100	180	0	0	1000	0	1	20	COUNTER RECEIPT-BRKRM-106	20
21,23	HEAT PUMP 1A	20	2	1663	1200	0	0	0	0	1	20	REFRIGERATOR-BRKRM-106	22
21,23	HEAT PUMP 1A	20	2	1663	1200	1663	720	0	0	1	20	RECEPTS-MEZZ RM 200	24
25,27	CONDENSER 1	40	2	2350	0	0	0	0	0	1	20	----	26
25,27	CONDENSER 1	40	2	2350	0	0	0	0	0	1	20	----	28
29	----	20	1	0	0	0	0	0	0	1	20	----	30
				CONNECTED LOAD PHASE TOTALS (VA)									
				8771	11344	6913							
				CONNECTED LOAD (KVA)	26.1	DEMAND FACTOR	1.00	DEMAND LOAD (KVA)	26.1	DEMAND LOAD	26.1 KVA		
				Standard	26.1	DEMAND FACTOR	1.00	DEMAND LOAD (KVA)	26.1	SPARE CAPACITY	9.9 KVA		
										SPARE CAPACITY	27.5 AMPS		
										SPARE CAPACITY	28%		
										PHASE BALANCE	A TO B	77%	
											B TO C	61%	
											C TO A	79%	
				TOTAL:	26.1			26.1					
				LOAD (AMPS):	72.5			72.5					

NO.	ISSUE/REVISION	DATE	BY
1	ISSUED FOR PROGRESS	1/13/14	JLESSARD

**Interstate Electrical Services**  
THE DIFFERENCE IS ATTITUDE  
16 GOTE LANE BEDFORD, N.H. 03110  
P: (603) 882-7868  
www.iesect.com

**EVO ROCK & FITNESS**  
65 WARREN AVE  
PORTLAND, MAINE

DATE: 12-6-13

DRAWN BY: B.HARLOW

DESIGNED BY: M.WHITE

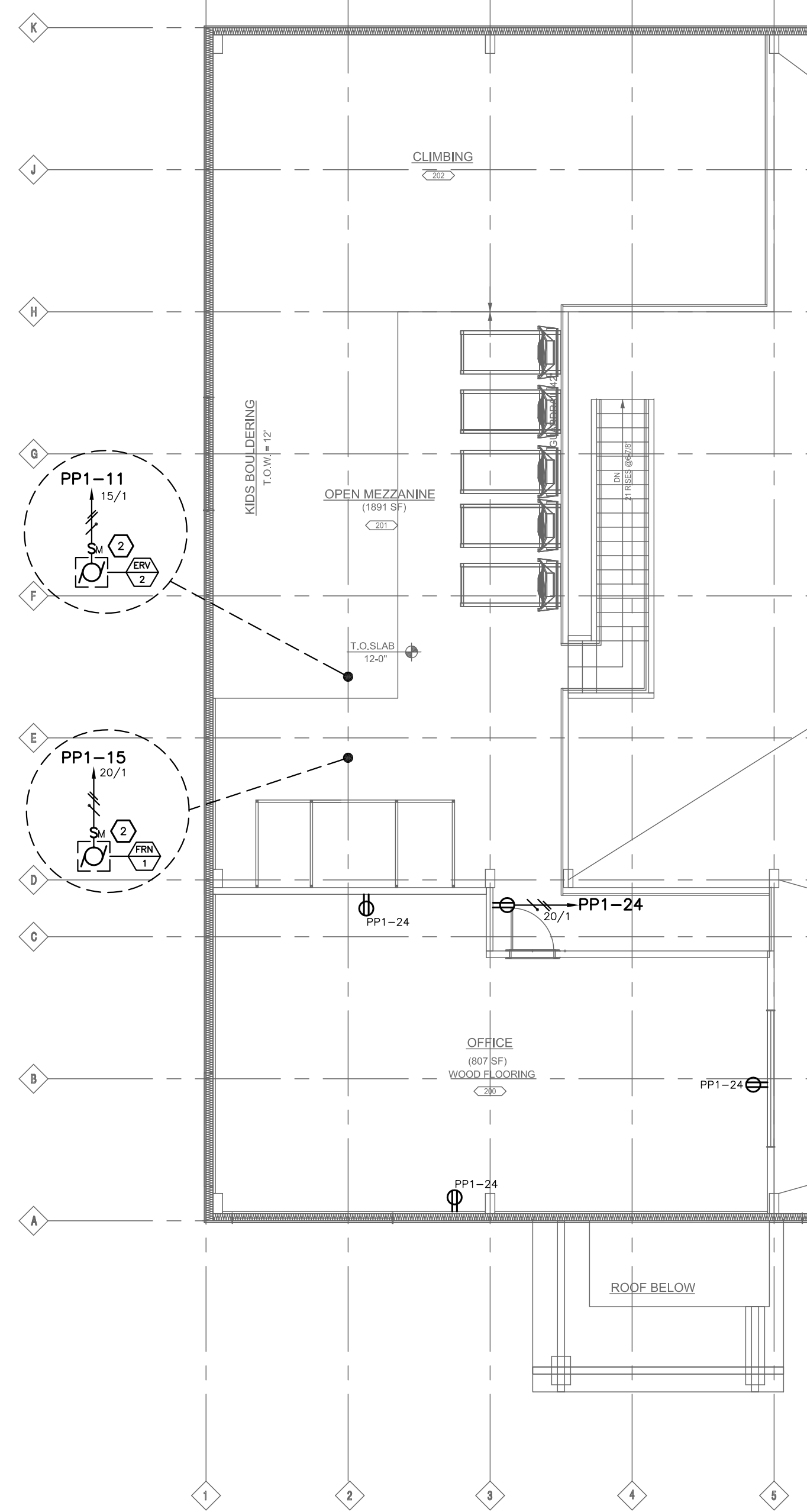
CHECKED BY: M. WHITE

SCALE: AS SHOWN

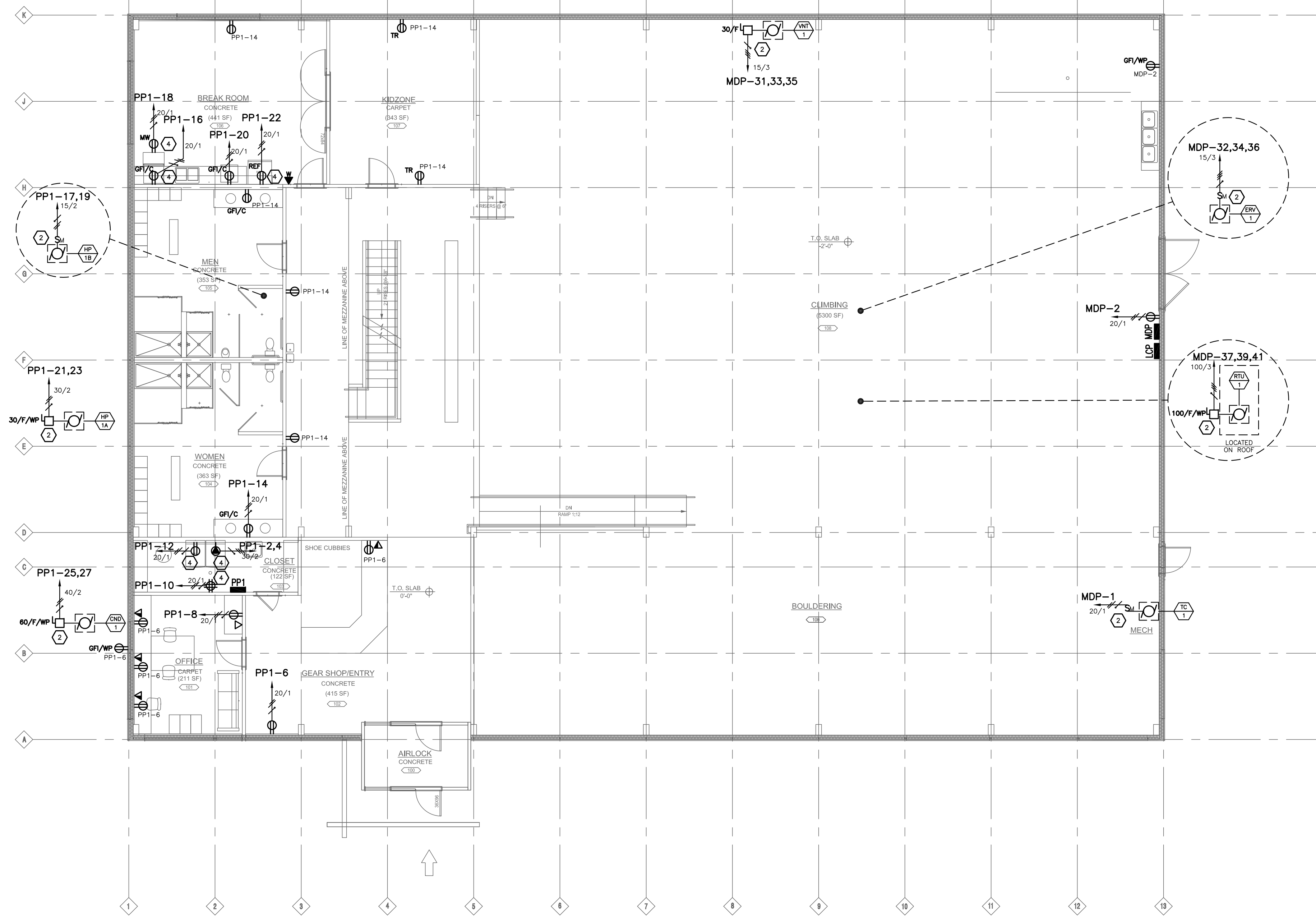
PROJECT NUMBER: ---

DRAWING TITLE:  
**RISER DIAGRAM AND DETAILS**

DRAWING NUMBER:  
**E2**  
SHEET 2 OF 4



**2 MEZZANINE PLAN**  
1/8"=1'-0"



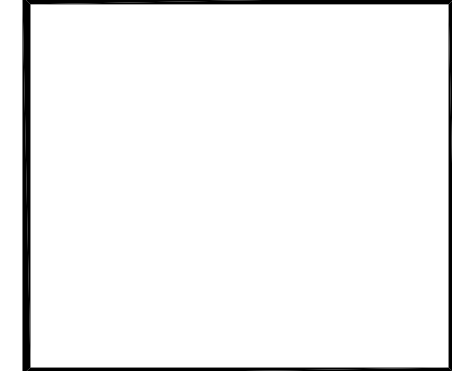
**1 FIRST FLOOR PLAN**  
1/8"=1'-0"

**ELECTRICAL KEY NOTES:**

- 1 SELF CONTAINED UNIT EXIT SIGNS, EMERGENCY BATTERY UNITS AND EMERGENCY BALLAST TO BE CONNECTED TO LOCAL AREA LIGHTING CIRCUITS AHEAD OF ALL SWITCHING CONTROLS, IN ACCORDANCE WITH 2011 NEC SECTION 700.12-(4).
- 2 E.C. TO PROVIDE POWER CONNECTION TO MECHANICAL EQUIPMENT AS SHOWN - ALL LOW VOLTAGE AND CONTROL WIRING TO BE FURNISHED AND INSTALLED BY THE M.C. VERIFY LOCATION OF MECHANICAL EQUIPMENT IN FIELD WITH THE MECHANICAL CONTRACTOR.
- 3 E.C. TO VERIFY FINAL LOCATION OF OUTLET, DEVICE, AND/OR EQUIPMENT IN FIELD WITH THE GENERAL CONTRACTOR PRIOR TO ROUGH IN.
- 4 E.C. TO COORDINATE EXACT LOCATION AND ELECTRICAL REQUIREMENTS OF OWNER FURNISHED EQUIPMENT IN THE FIELD WITH THE OWNERS REPRESENTATIVE.
- 5 REMOTE TEST STATION TO BE LOCATED IN ACCESSIBLE AREA WITH IN 25 FEET OF ROOF TOP UNIT. LABEL EACH STATION IDENTIFYING THE ROOF TOP UNIT IT SERVES. REFER TO MANUFACTURERS RISER DIAGRAM FOR WIRING REQUIREMENTS.
- 6 E.C. TO COORDINATE EXACT LOCATION OF LIGHTING FIXTURES IN MECHANICAL SPACE TO AVOID CONFLICT WITH MECHANICAL EQUIPMENT AND DUCT WORK.

PROGRESS  
JANUARY 13, 2014  
DRAWING  
NOT FOR CONSTRUCTION

NO.	ISSUE/REVISION	DATE	BY
1	ISSUED FOR PROGRESS	1/13/14	JLESSARD



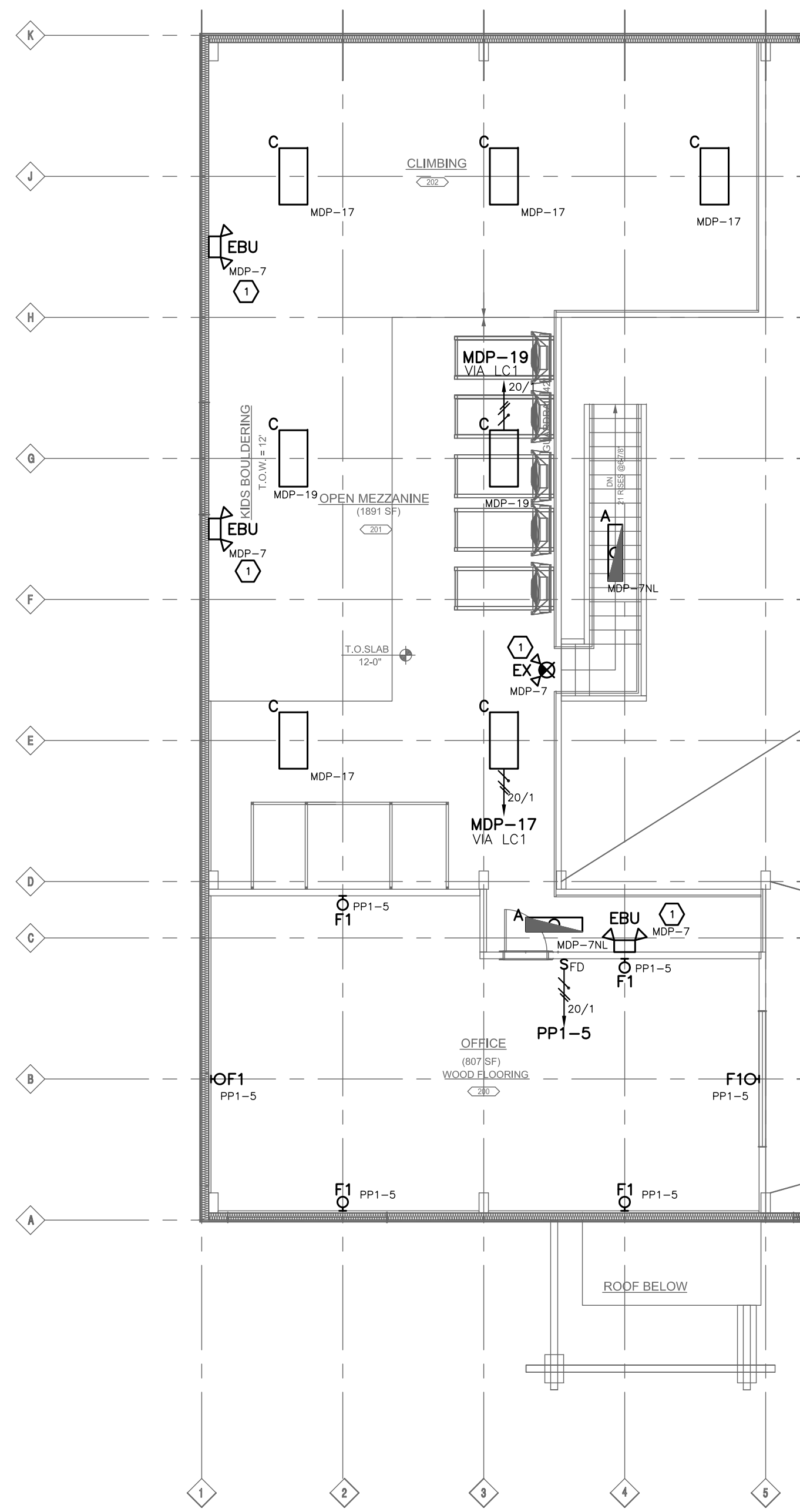
**Interstate Electrical Services**  
THE DIFFERENCE IS ATTITUDE  
16 GOTE LANE BEDFORD, N.H. 03110  
P: (603) 452-7667  
www.iesec1.com

PROJECT:  
**EVO ROCK & FITNESS**  
65 WARREN AVE  
PORTLAND, MAINE

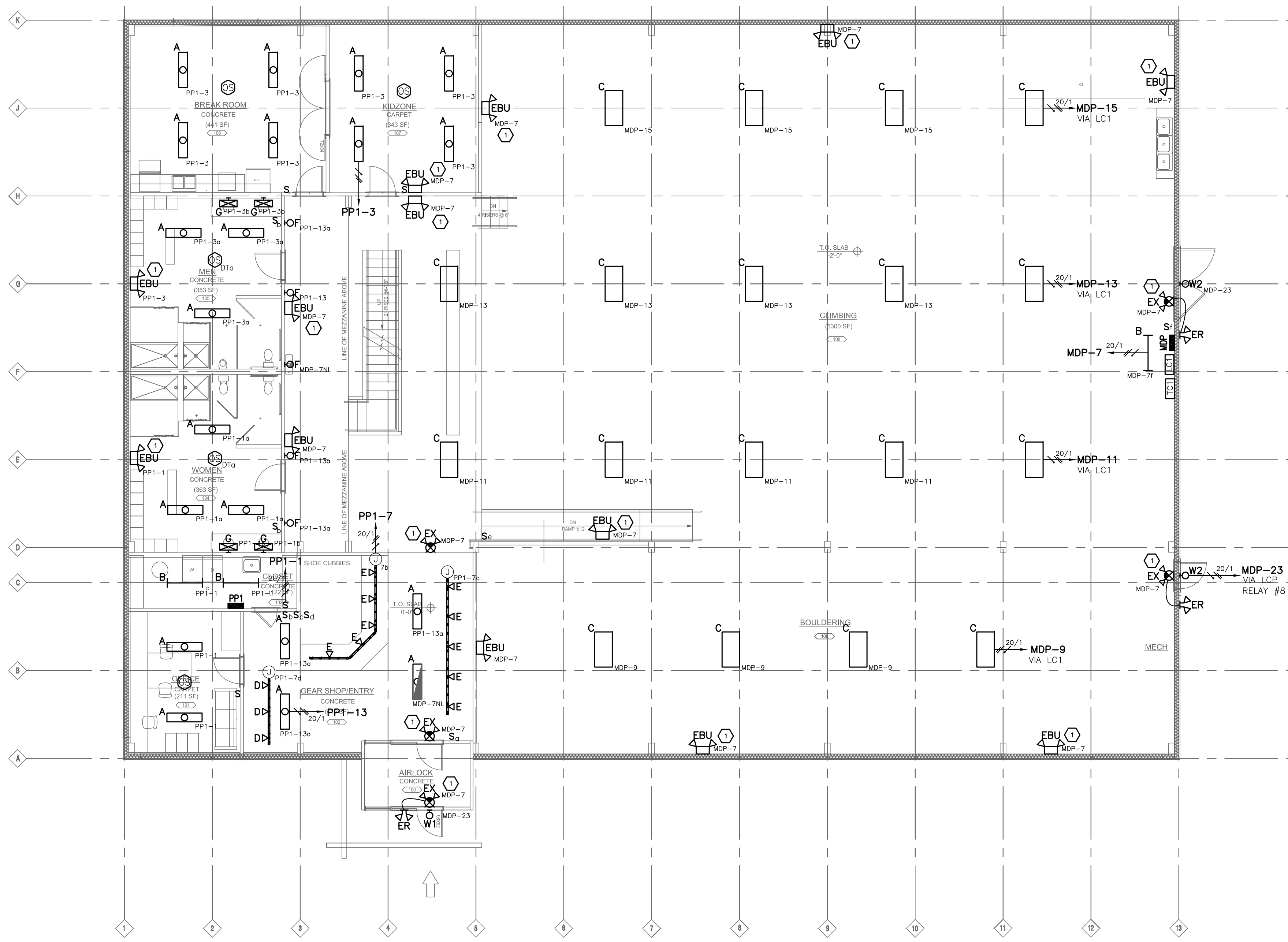
DATE:	12-6-13
DRAWN BY:	B.HARLOW
DESIGNED BY:	M.WHITE
CHECKED BY:	M. WHITE
SCALE:	AS SHOWN
PROJECT NUMBER:	---

DRAWING TITLE:  
**POWER PLANS**

DRAWING NUMBER:  
**E3**  
SHEET 3 OF 4



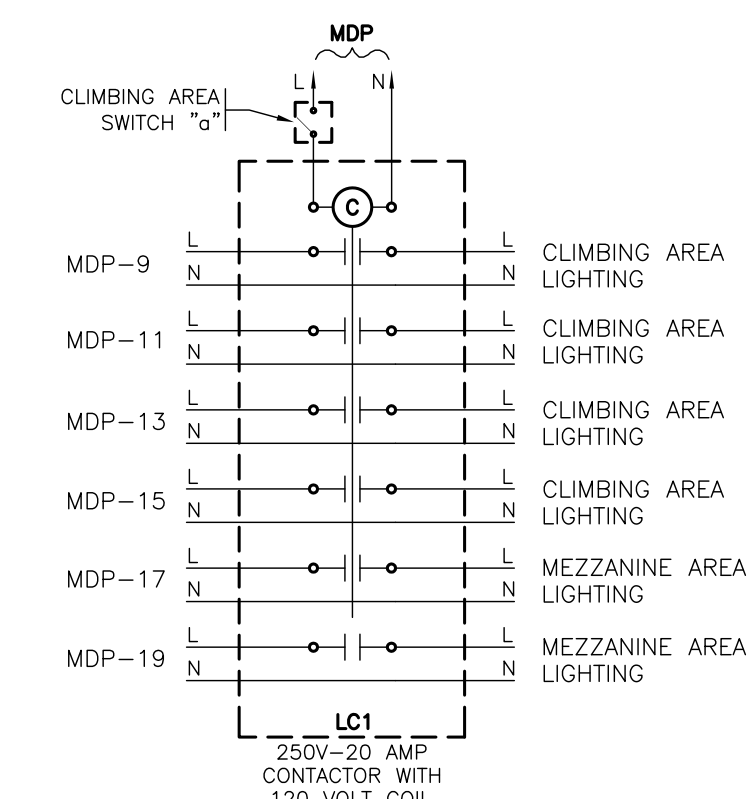
**2 MEZZANINE PLAN**  
1/8"=1'-0"



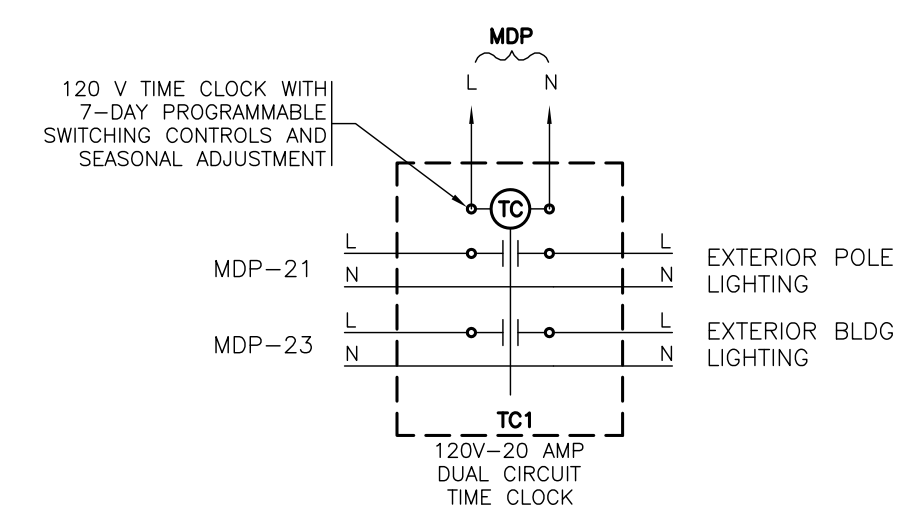
**1 FIRST FLOOR PLAN**  
1/8"=1'-0"

**ELECTRICAL KEY NOTES:**

- 1 SELF CONTAINED UNIT EXIT SIGNS, EMERGENCY BATTERY UNITS AND EMERGENCY BALLAST TO BE CONNECTED TO LOCAL AREA LIGHTING CIRCUITS AHEAD OF ALL SWITCHING CONTROLS, IN ACCORDANCE WITH 2011 NEC SECTION 700.12-(e).
- 2 E.C. TO PROVIDE POWER CONNECTION TO MECHANICAL EQUIPMENT AS SHOWN. ALL LOW VOLTAGE AND CONTROL WIRING TO BE FURNISHED AND INSTALLED BY THE M.C. VERIFY LOCATION OF MECHANICAL EQUIPMENT IN FIELD WITH THE MECHANICAL CONTRACTOR.
- 3 E.C. TO VERIFY FINAL LOCATION OF OUTLET, DEVICE, AND/OR EQUIPMENT IN FIELD WITH THE GENERAL CONTRACTOR PRIOR TO ROUGH IN.
- 4 E.C. TO COORDINATE EXACT LOCATION AND ELECTRICAL REQUIREMENTS OF OWNER FURNISHED EQUIPMENT IN THE FIELD WITH THE OWNERS REPRESENTATIVE.
- 5 REMOTE TEST STATION TO BE LOCATED IN ACCESSIBLE AREA WITH IN 25 FEET OF ROOF TOP UNIT. LABEL EACH STATION IDENTIFYING THE ROOF TOP UNIT IT SERVES. REFER TO MANUFACTURERS RISER DIAGRAM FOR WIRING REQUIREMENTS.
- 6 E.C. TO COORDINATE EXACT LOCATION OF LIGHTING FIXTURES IN MECHANICAL SPACE TO AVOID CONFLICT WITH MECHANICAL EQUIPMENT AND DUCT WORK.



**3 CLIMBING AREA LIGHTING CONTROL**  
NOT TO SCALE



**4 EXTERIOR LIGHTING CONTROL**  
NOT TO SCALE

**PROGRESS**  
FEBRUARY 5, 2014  
**DRAWING**  
NOT FOR CONSTRUCTION

NO.	ISSUE/REVISION	DATE	BY
1	ISSUED FOR PROGRESS	1/13/14	J.LESSARD
2	ISSUED FOR PROGRESS	2/5/14	J.LESSARD

**Interstate**  
Electrical Services

THE DIFFERENCE IS ATTITUDE  
15 COTE LANE BEDFORD, N.H. 03110  
P: (603) 627-5230 F: (603) 627-3480  
www.interstate.com

PROJECT:

**EVO ROCK & FITNESS**

65 WARREN AVE  
PORTLAND, MAINE

DATE: 12-6-13

DRAWN BY: B.HARLOW

DESIGNED BY: M.WHITE

CHECKED BY: M. WHITE

SCALE: AS SHOWN

PROJECT NUMBER: ---

DRAWING TITLE:

**LIGHTING PLANS**

DRAWING NUMBER

**E4**

SHEET 4 OF 4