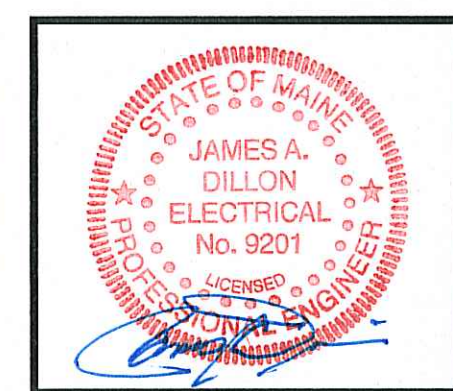


NO.	ISSUE/REVISION	DATE	BY
1	ISSUED FOR PROGRESS	1/13/14	J.LESSARD
2	ISSUED FOR PROGRESS	2/5/14	J.LESSARD
3	ISSUED FOR CONSTRUCTION	6/5/14	B.HARLOW



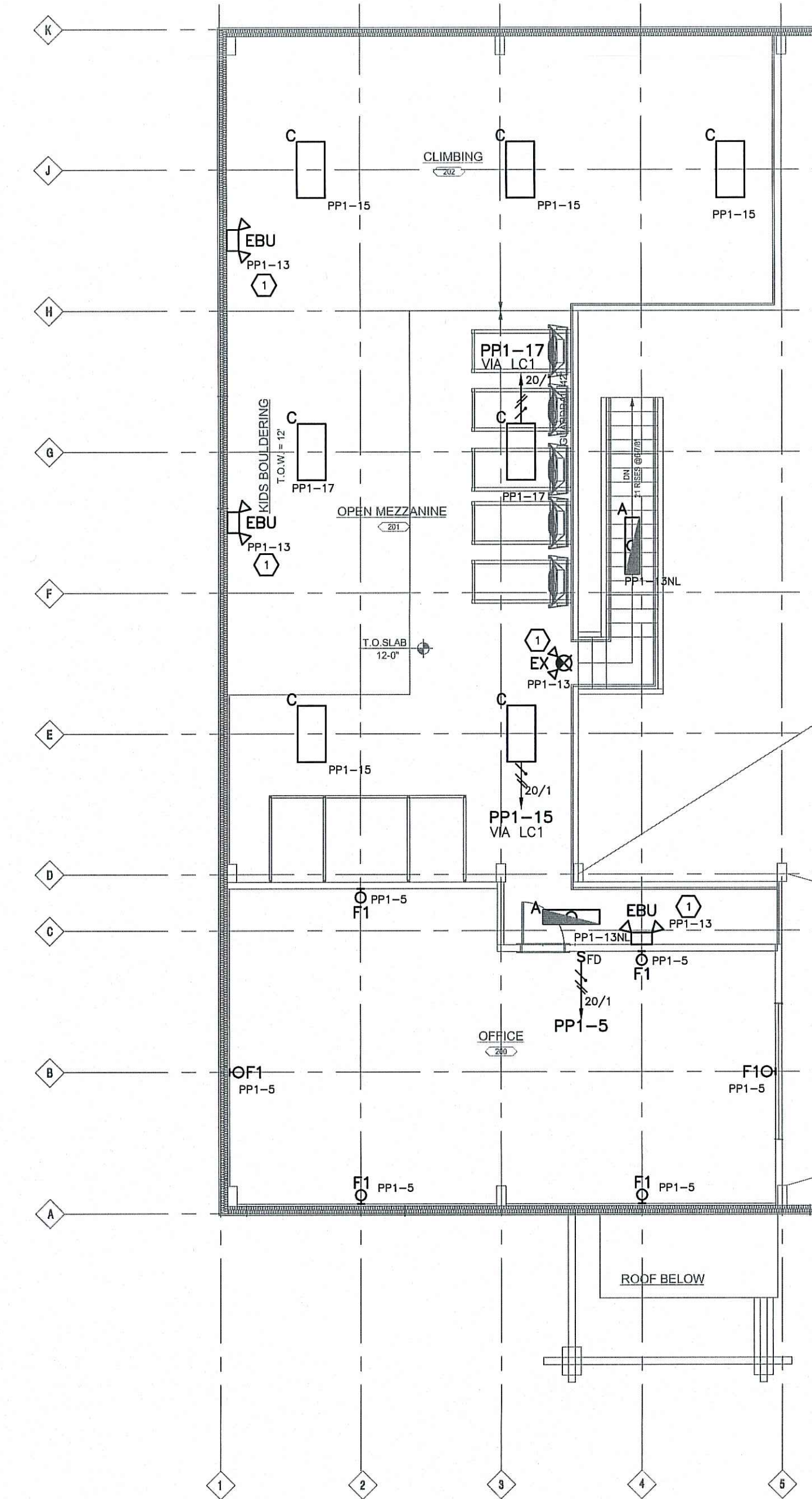
Interstate Electrical Services
 THE DIFFERENCE IS ATTITUDE
 16 COTE LANE BEDFORD, N.H. 03110
 P. (603) 627-3650 F. (603) 627-3460
 www.interstate-elect.com

PROJECT:
EVO ROCK & FITNESS
 65 WARREN AVE
 PORTLAND, MAINE

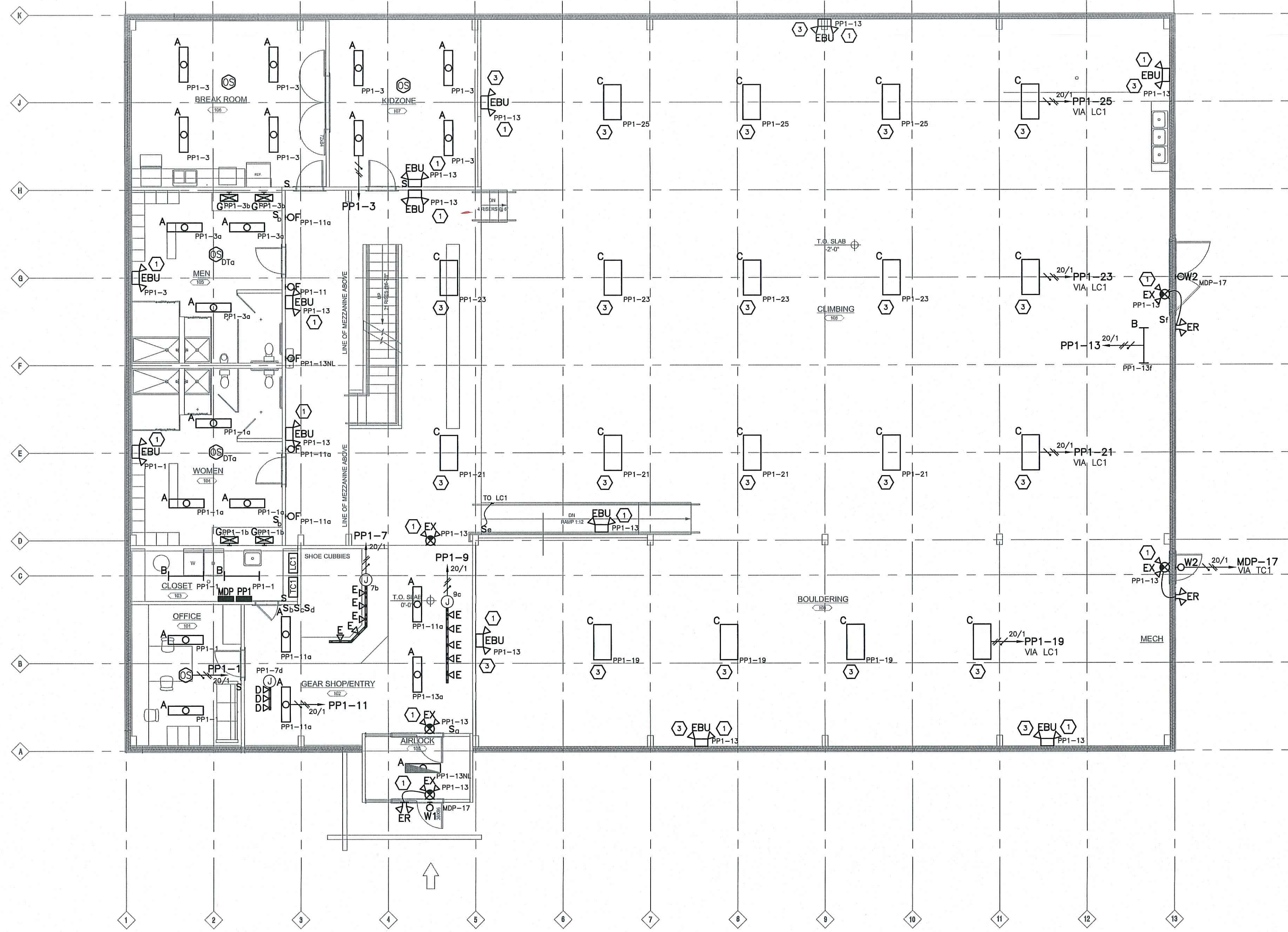
DATE:	12-6-13
DRAWN BY:	B.HARLOW
DESIGNED BY:	M.WHITE
CHECKED BY:	M. WHITE
SCALE:	AS SHOWN
PROJECT NUMBER:	631940

DRAWING TITLE:
LIGHTING PLANS

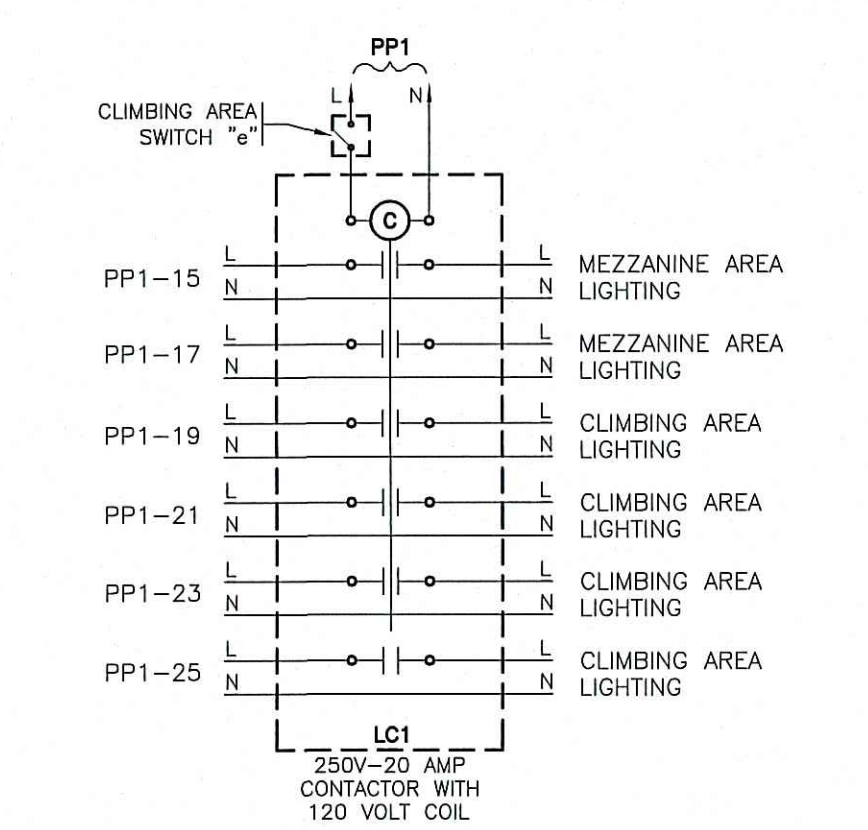
DRAWING NUMBER
E4
 SHEET 4 OF 4



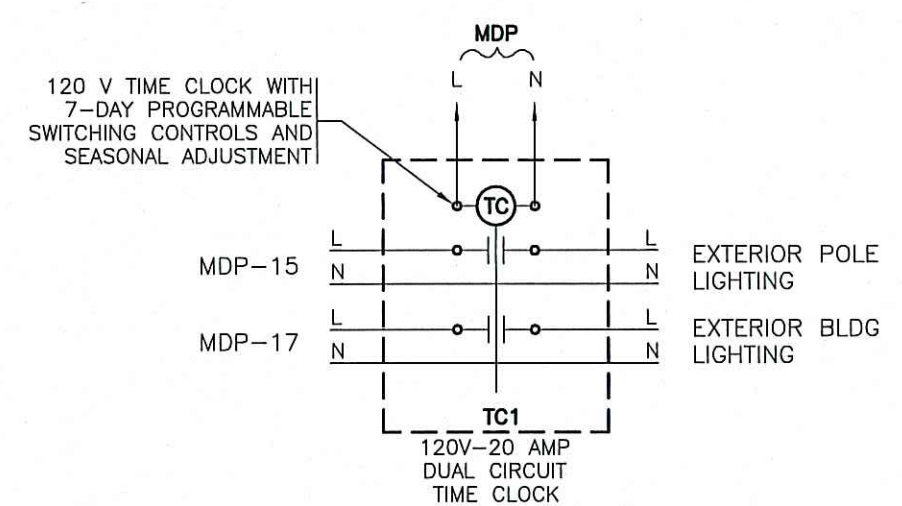
2 MEZZANINE PLAN
 1/8"=1'-0"



1 FIRST FLOOR PLAN
 1/8"=1'-0"



3 CLIMBING AREA LIGHTING CONTROL
 NOT TO SCALE



4 EXTERIOR LIGHTING CONTROL
 NOT TO SCALE

- ELECTRICAL KEY NOTES:**
- SELF CONTAINED UNIT EXIT SIGNS, EMERGENCY BATTERY UNITS AND EMERGENCY BALLAST TO BE CONNECTED TO LOCAL AREA LIGHTING CIRCUITS AHEAD OF ALL SWITCHING CONTROLS, IN ACCORDANCE WITH 2011 NEC SECTION 700.12-(6).
 - E.C. TO PROVIDE POWER CONNECTION TO MECHANICAL EQUIPMENT AS SHOWN, ALL LOW VOLTAGE AND CONTROL WIRING TO BE FURNISHED AND INSTALLED BY THE M.C. VERIFY LOCATION OF MECHANICAL EQUIPMENT IN FIELD WITH THE MECHANICAL CONTRACTOR.
 - E.C. TO VERIFY FINAL LOCATION OF OUTLET, DEVICE, AND/OR EQUIPMENT IN FIELD WITH THE GENERAL CONTRACTOR PRIOR TO ROUGH IN.
 - E.C. TO COORDINATE EXACT LOCATION AND ELECTRICAL REQUIREMENTS OF OWNER FURNISHED EQUIPMENT IN THE FIELD WITH THE OWNERS REPRESENTATIVE.
 - REMOTE TEST STATION TO BE LOCATED IN ACCESSIBLE AREA WITH IN 25 FEET OF ROOF TOP UNIT IT SERVES. REFER TO MANUFACTURERS RISER DIAGRAM FOR WIRING REQUIREMENTS.
 - E.C. TO COORDINATE EXACT LOCATION OF LIGHTING FIXTURES IN MECHANICAL SPACE TO AVOID CONFLICT WITH MECHANICAL EQUIPMENT AND DUCT WORK.

CONSTRUCTION
 JUNE 5, 2014
 DRAWING
 INTERSTATE ELECTRICAL