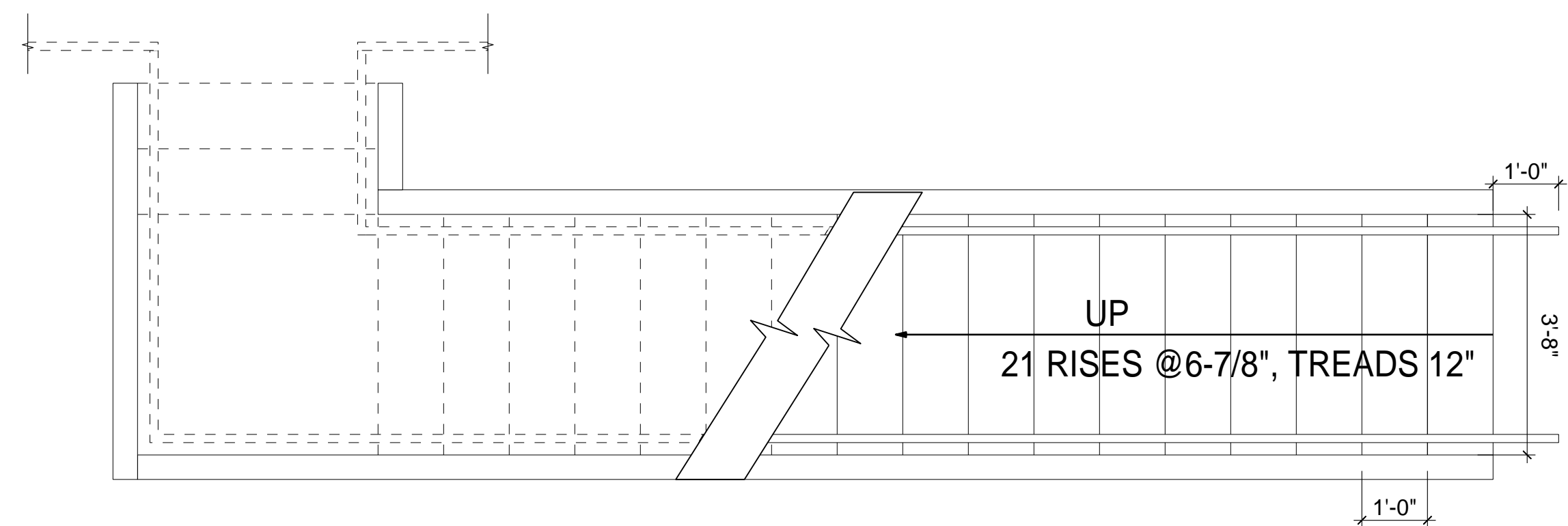
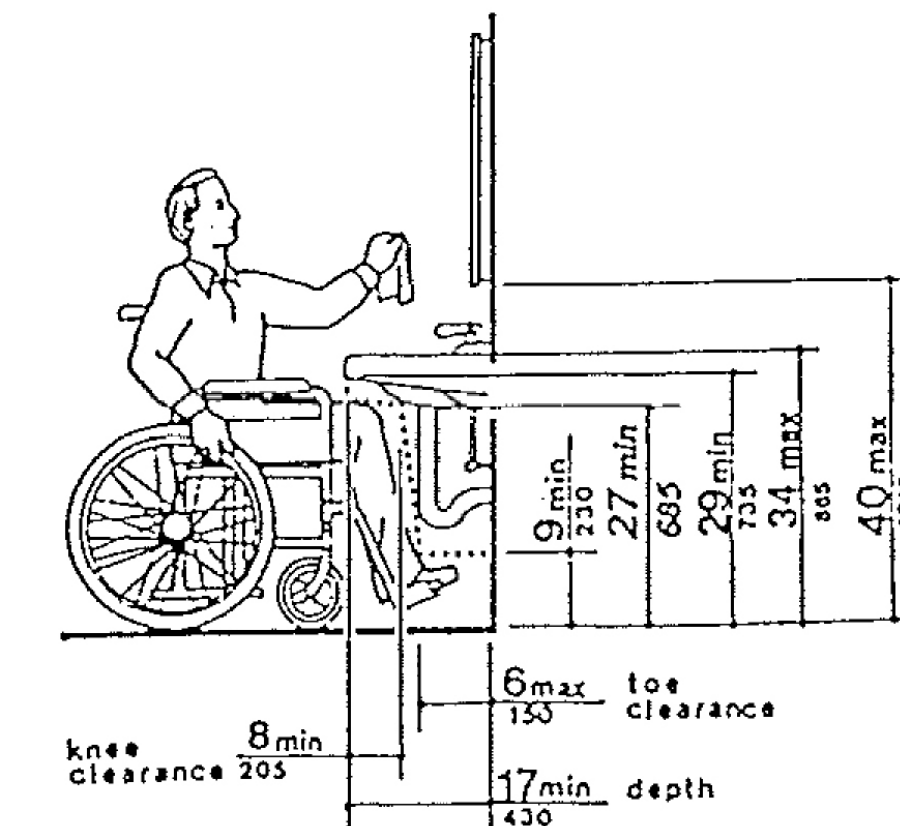


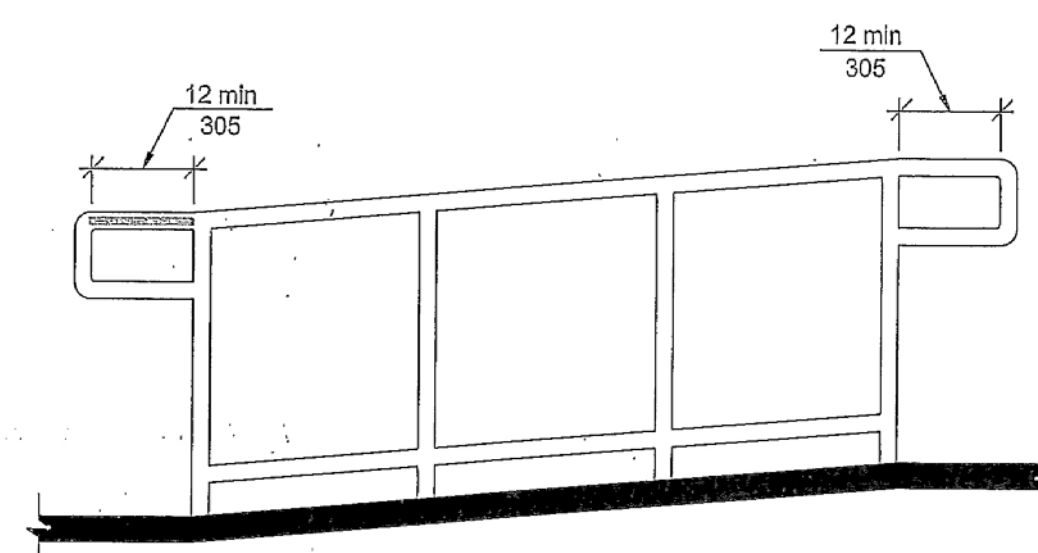
GRAB BARS AT WATER CLOSETS



STAIRS - PLAN VIEW

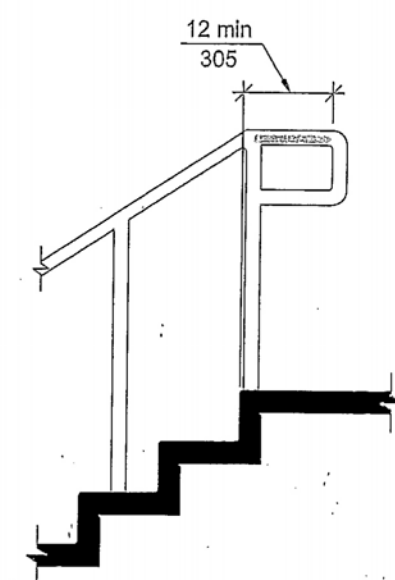


LAVATORY CLEARANCES



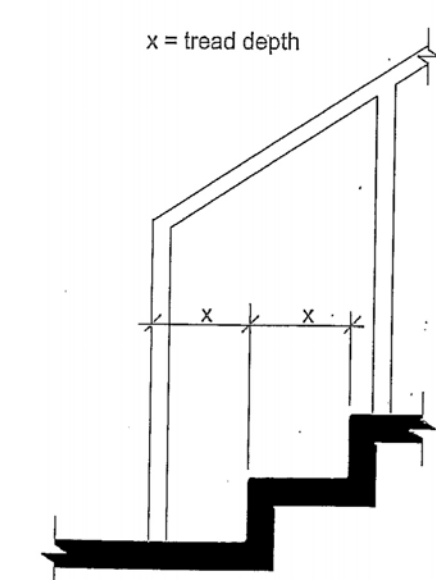
Top and Bottom Handrail Extensions at Ramps

HANDICAP RAMP - HANDRAIL EXTENSIONS

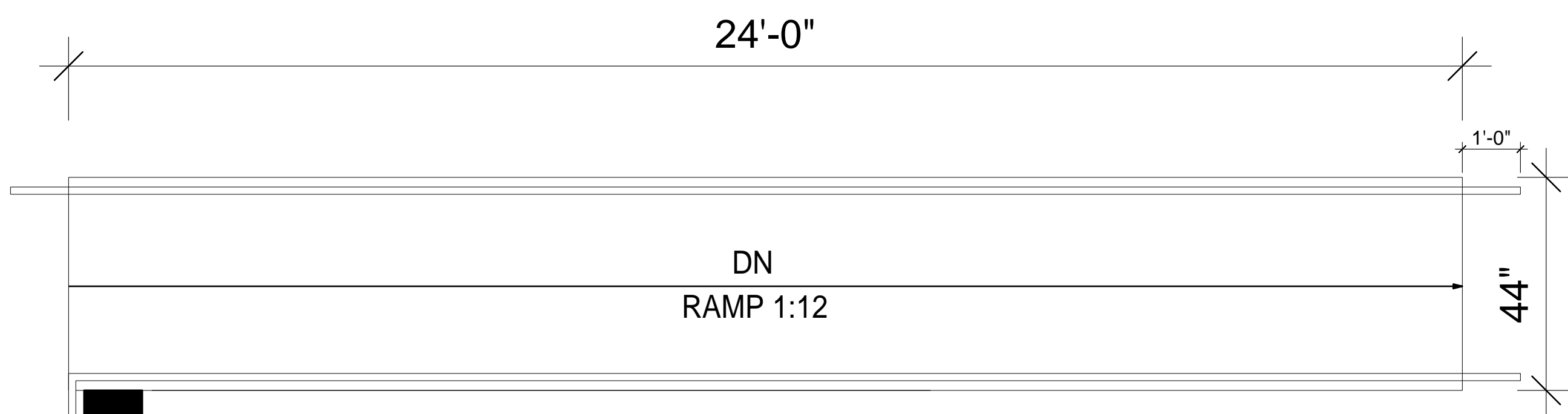


Top Handrail Extensions at Stairs

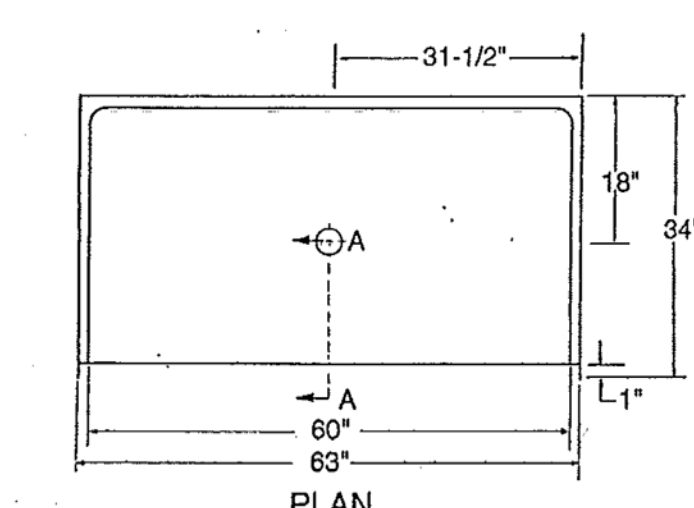
STAIRCASE - HANDRAIL EXTENSIONS



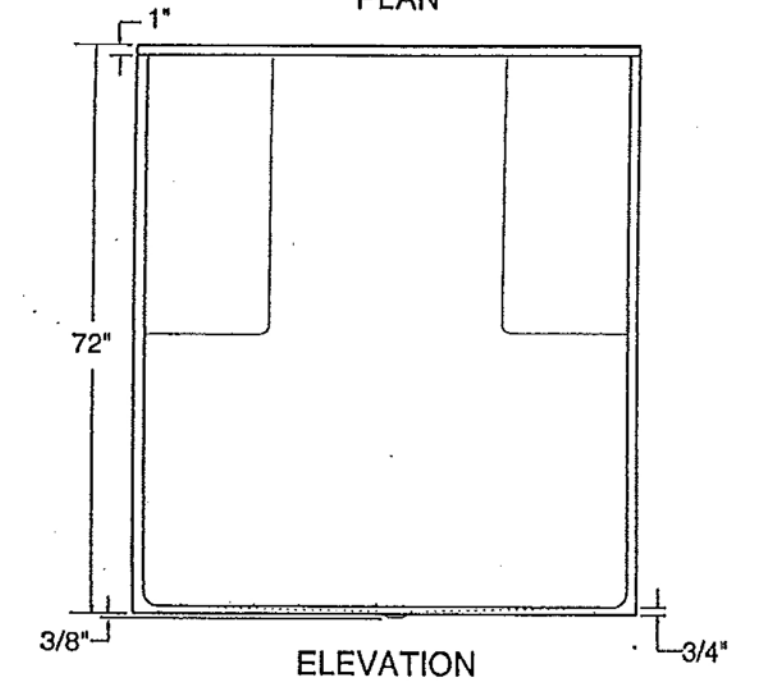
Bottom Handrail Extensions at Stairs



HANDICAP RAMP - PLAN VIEW



PLAN



ELEVATION

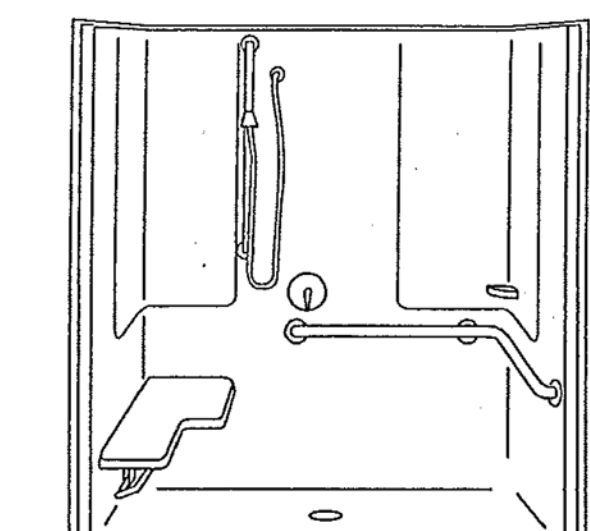
S-6333ADA.75 L
S-6333ADA.75 R



ADA COMPLIANT

DESCRIPTION
ADA compliant roll-in shower meeting min. I.D. of 60"x30". The 3/4" threshold design eliminates the need to recess for ADA compliance if 1/4" (min.) flooring is used. Fiberglass construction reinforced with 1/2" thick honeycomb core. Laminate includes ceramic fiber loaded resin matrix. Plywood backing for seat and grab bars. Wall material sample available.

OTHER FEATURES
-ADA compliant accessories available:
shower valve, soap dish, hand shower, curtain and rod
-Luxurious Gelecoat finish in solid colors and Granite



Shown here plumbed as Left hand model with optional fold-down seat, corner grab bar, soapdish, glidebar kit and valve.

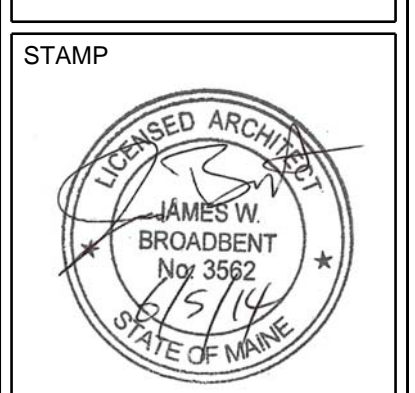
ADA SHOWER DETAILS

HILARY HARRIS, AIA
LEED AP
PO BOX 22
CONCORD, NH 03302
PH: (603) 499-1239
EMAIL:
hilyharris@gmail.com

EVO ROCK & FITNESS
PORTLAND, ME

REMARKS		ISSUE	
BY	FOR CONSTRUCTION	DATE	ISSUE
HBH	FOR CONSTRUCTION	08APR14	
HBH		08JUN14	

DRAWING TITLE:
ADA DETAILS



SCALE: 1/2"=1'-0"
DSN TEAM:
SHEET NUMBER:

D-1.1

FOR CONSTRUCTION