

HILARY HARRIS, AIA
LEED AP

PO BOX 22
CONCORD, NH 03302
PH: (603) 499-1239

EMAIL:
hilyharris@gmail.com

EVO ROCK & FITNESS
PORTLAND, ME

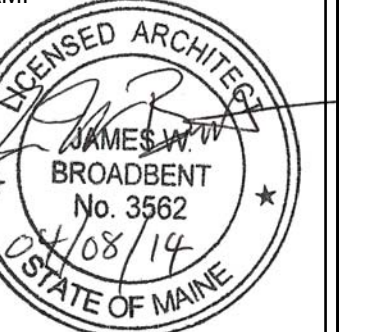
ISSUE

DATE	BY	REMARKS
01JUL13	HBH	PLANNING BOARD REVIEW
08APR14	HBH	FOR CONSTRUCTION
02JUN14	HBH	FOR CONSTRUCTION

DRAWING TITLE:

**MEZZANINE
LIFE SAFETY
PLAN**

STAMP



SCALE: 1/8"=1'-0"

DSN TEAM:

SHEET NUMBER:

A-1.5

LIFE SAFETY NOTES:

1. SEC. 505.3 EGRESS. EACH OCCUPANT SHALL HAVE ACCESS TO AT LEAST TWO INDEPENDENT MEANS OF EGRESS WHERE THE COMMON PATH OF EGRESS TRAVEL EXCEEDS THE LIMITATIONS OF SECTION 1014.3

2. SECTION 1014.3: COMMON PATH OF TRAVEL. IN OCCUPANCIES OTHER THAN GROUPS H-1, H-2, AND H-3 THE COMMON PATH OF EGRESS TRAVEL SHALL NOT EXCEED 75 FEET.

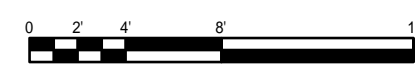
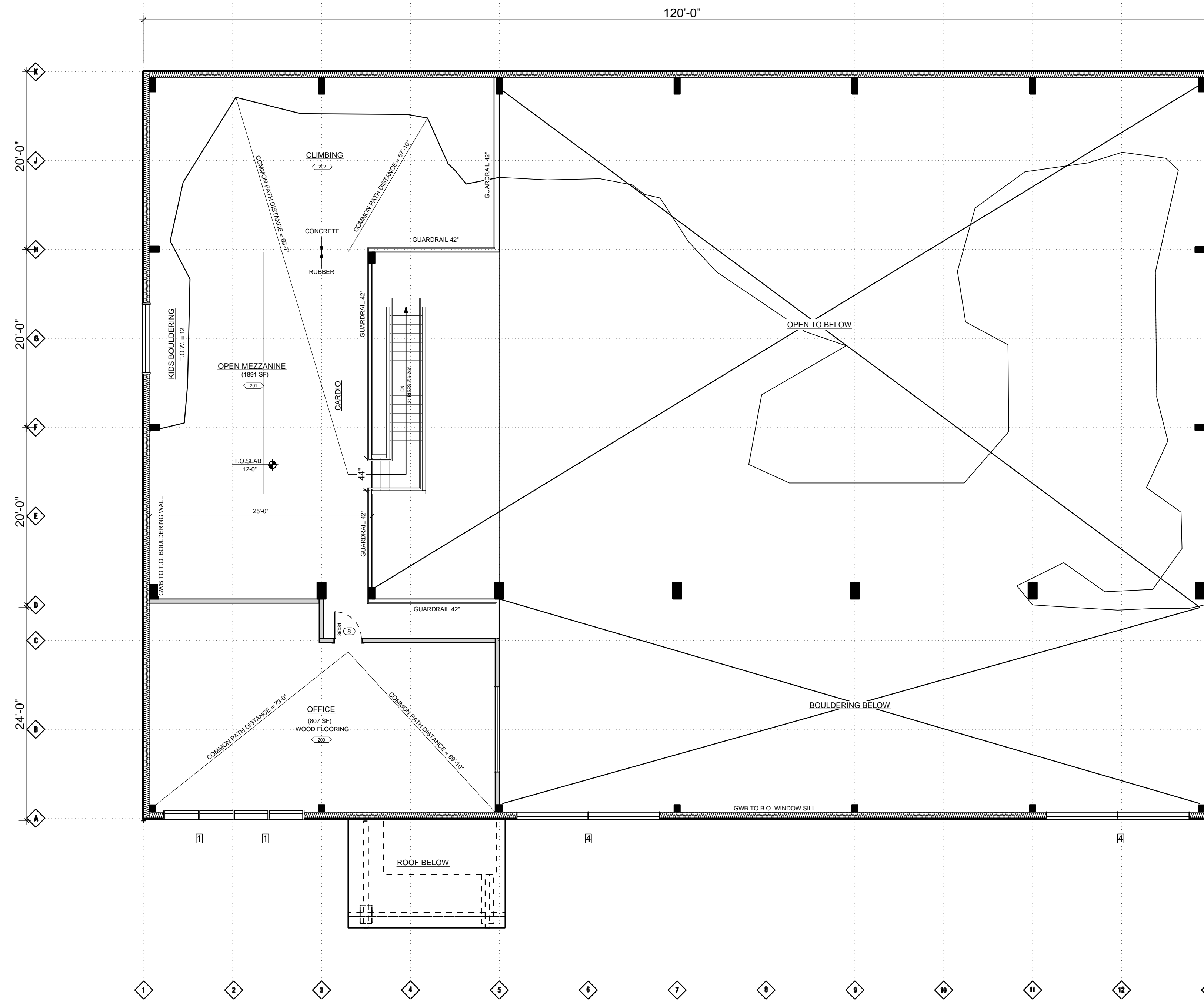
3. THIS IS GROUP A-3 OCCUPANCY, THEREFORE THE COMMON PATH OF EGRESS TRAVEL IS < 75' AND WE ARE ONLY REQUIRED ONE INDEPENDENT MEANS OF EGRESS FROM THE MEZZANINE LEVEL

4. NOTE: THE DISTANCE FROM THE MOST REMOTE POINT IN THE MEZZANINE IS < 75' WITHOUT THE CLIMBING WALLS INSTALLED AS WELL

MEZZANINE: 8155 SF X 1/3 = 2718 SF ALLOWABLE AREA
MEZZANINE AREA = 2692 SF
MEZZANINE OPENS TO AREA BELOW: 8034

MEZZANINE ALLOWABLE ENCLOSED OCCUPANT LOAD = 10
OFFICE OCCUPANT LOAD = 8

COMMON PATH OF TRAVEL = 75'
COMMON PATH OF TRAVEL FROM SE CORNER = 69'-10"
COMMON PATH OF TRAVEL FROM SW CORNER = 73'-10"
COMMON PATH OF TRAVEL FROM NW CORNER = 69'-7"
COMMON PATH OF TRAVEL FROM NE CORNER = 67'-10"



FOR CONSTRUCTION