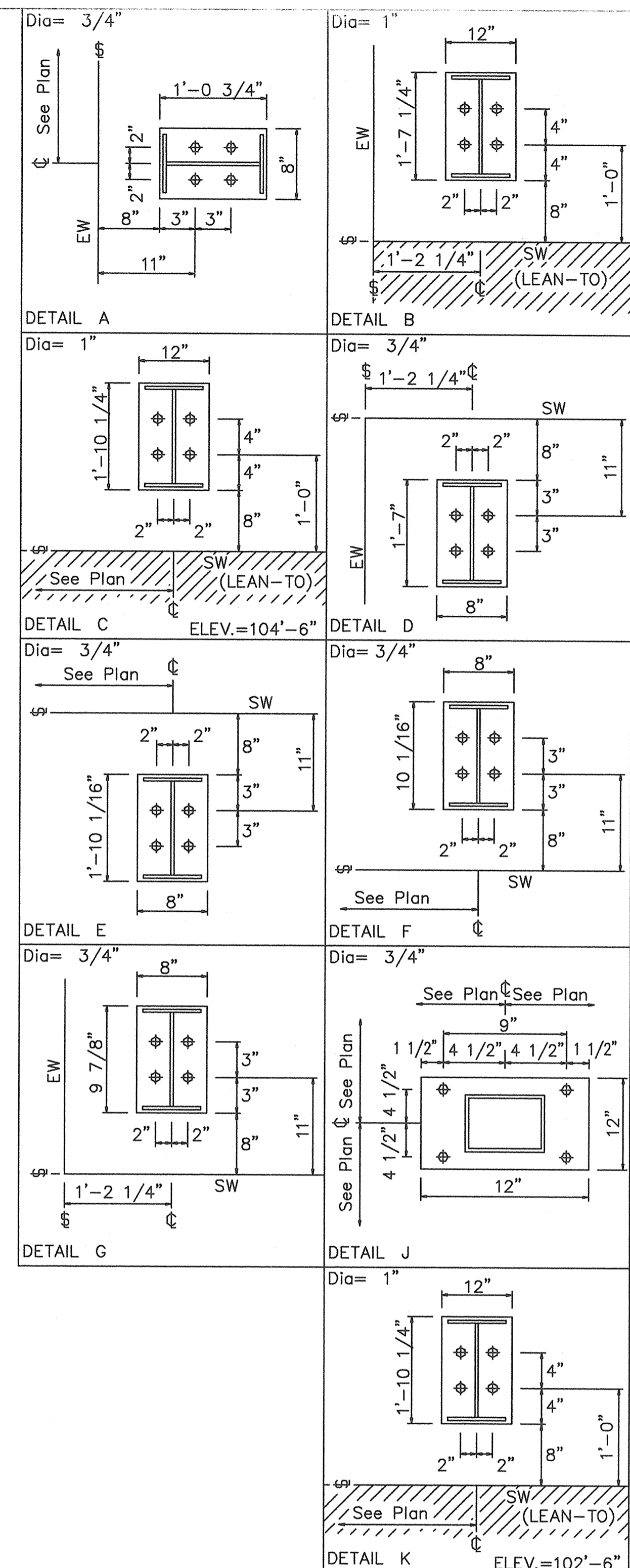
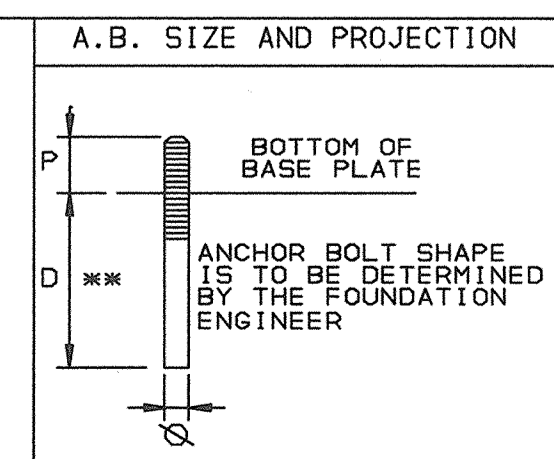


ANCHOR BOLT PLAN

NOTE: All Base Plates @ 105'-0" (U.N.)
 NOTE: Finished Floor @ 105'-0" (U.N.)



- GENERAL NOTES:**
- ALL DIMENSIONS ARE OUT TO OUT OF STEEL. IF CONCRETE NOTCH IS REQUIRED, THEN THE APPROPRIATE DIMENSIONS SHOULD BE ADDED TO OBTAIN THE OUT TO OUT OF CONCRETE DIMENSIONS.
 - CONCRETE STRENGTH = 3000 PSI MINIMUM.
 - ANCHOR BOLTS ARE NOT FURNISHED BY THE MANUFACTURER.
 - DRAWINGS ARE NOT TO SCALE.



A. B. SIZE AND PROJECTION		ANCHOR BOLT QUANTITY		ALLOW. LOAD TO BOLTS (LBS.)	PROJ. P (IN.)	MIN. EMBED D (IN.)	ISSUE	DESCRIPTION	BY	DATE
QTY.	BOLT DIA.	AS REQ'D								
	3/4"	80		8400	2 1/2"	**				
	1"	28		15,000	3"	**				
	1 1/2"			23,400	3 1/2"	**				
	1 3/4"			33,700	3 3/4"	**				

BOLT MATERIAL = ASTM A36
 ** - ANCHOR BOLT EMBEDMENT LENGTH "D" IS TO BE DETERMINED BY THE FOUNDATION ENGINEER.

ISSUE	DESCRIPTION	BY	DATE
A	APPROVAL	JLA	12-19-13

CERTIFICATION EXTENDS ONLY FOR THE LOADS SPECIFIED ON KIRBY'S PURCHASE ORDER AS APPLIED TO THE STRUCTURAL COMPONENTS OF THE BUILDING DESIGNED AND SUPPLIED BY KIRBY BUILDING SYSTEMS, IF ERECTED AS INDICATED. NOTE THAT KIRBY'S ENGINEER IS NOT ACTING AS THE ENGINEER OF RECORD FOR THIS CONSTRUCTION PROJECT.

Kirby Building Systems
AN ANCHOR Company

KIRBY BUILDING SYSTEMS • 124 KIRBY DRIVE • PORTLAND, TN 37148

1/7/14

FLYNN CONSTRUCTION CORP. COMMERCIAL • INDUSTRIAL 145 TRIPLE • WASHINGTON, N.H. 03060 PHONE: (603) 882-8177 • FAX: (603) 889-0484	
TITLE: ANCHOR BOLT PLAN	DRN. BY:
BUILDER: FLYNN CONSTRUCTION	DATE:
CUSTOMER: EVOLUTION ROCK	CKD. BY:
LOCATION: PORTLAND, ME	DATE:
ID NUMBER: K13B0648M8R1	MBS
JOB NO: K13B0648A	DFG. NO: E1 OF 14