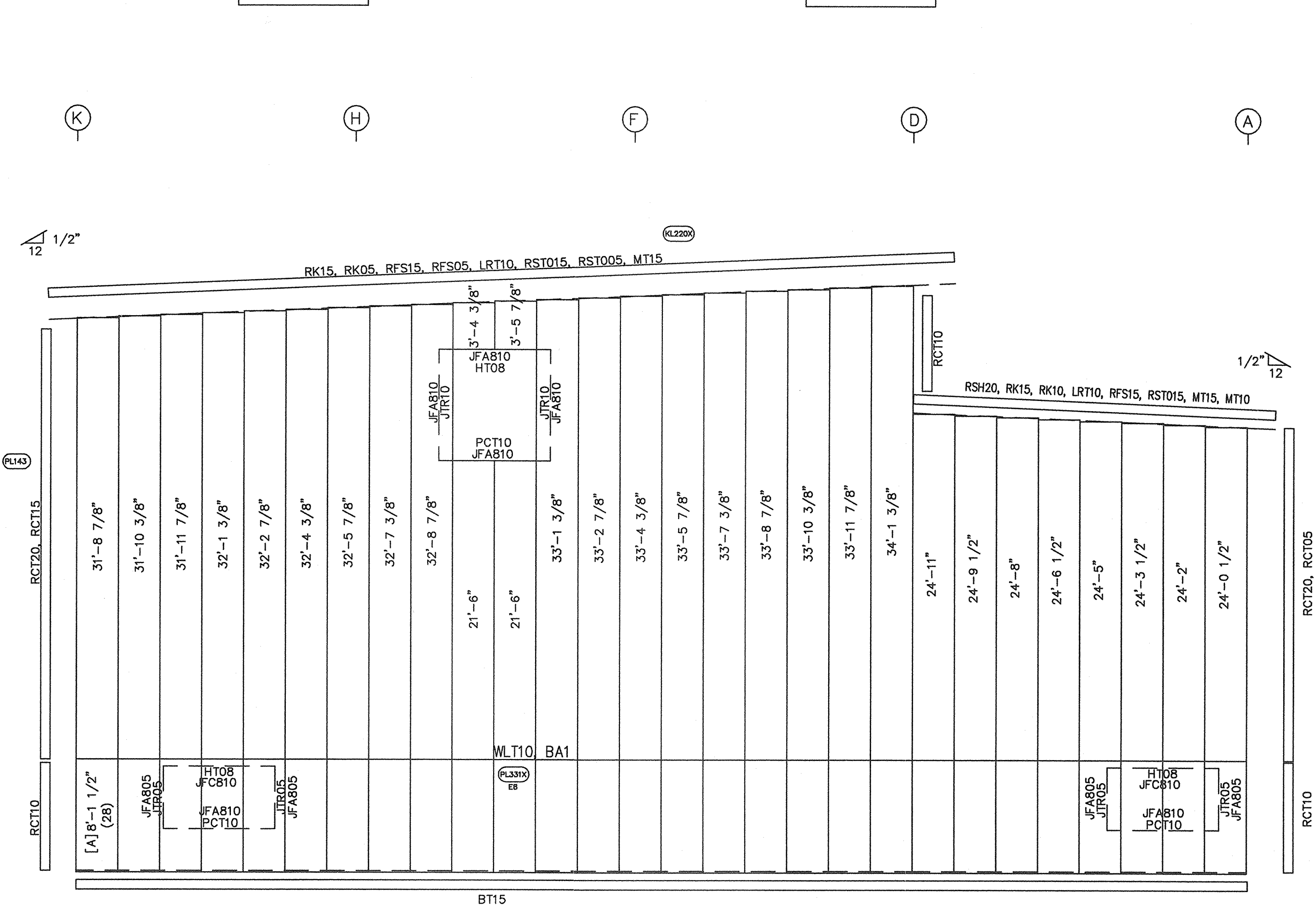
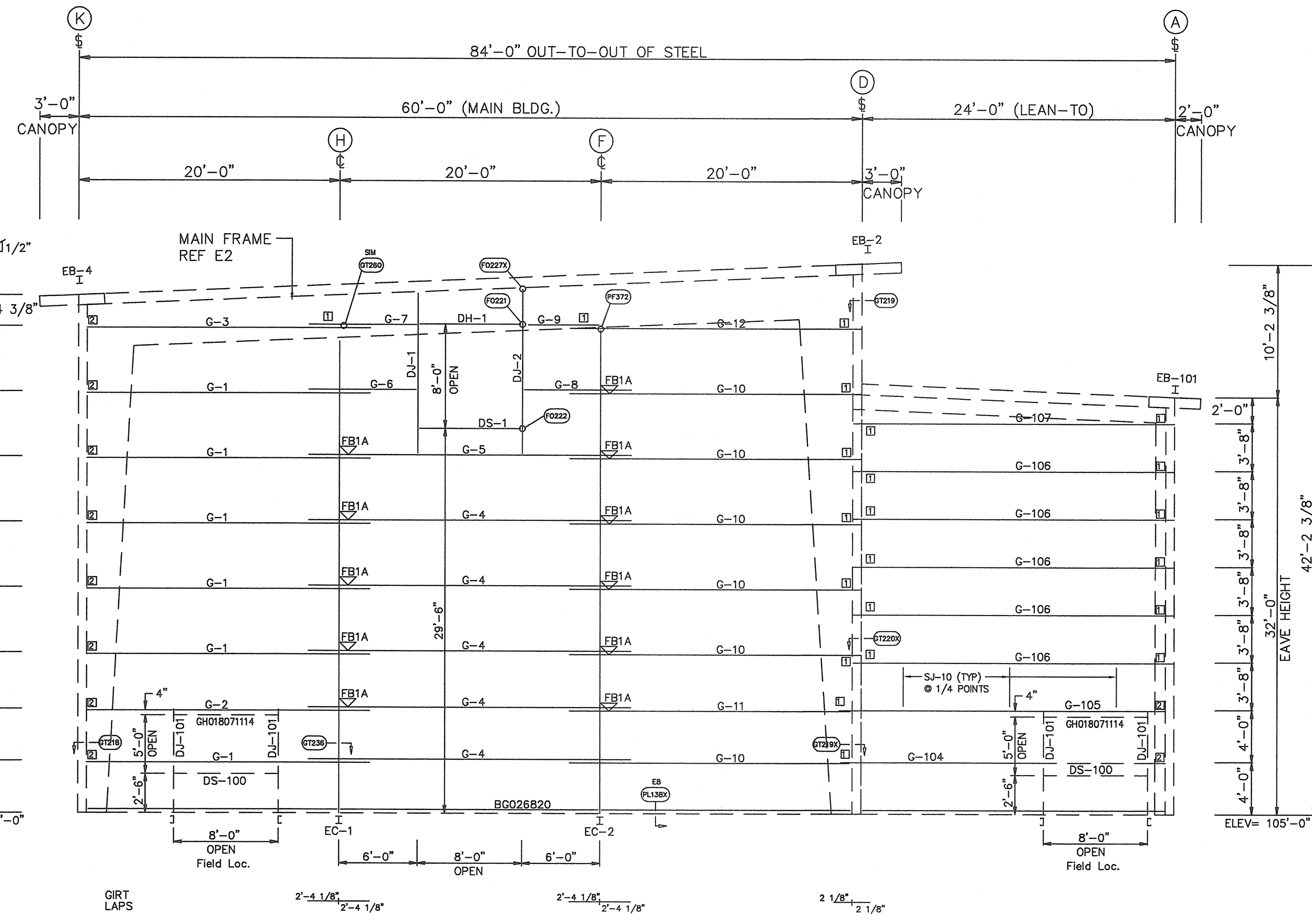


BOLT TABLE			
FRAME LINE 1			
LOCATION	QUAN	TYPE	DIA
Columns/Raf	2	A325	1/2"
Jamb	4	A325	1/2"

CONNECTION PLATES			
FRAME LINE 1			
ID	QUAN	MARK	PART
1	22	GC28	
2	10	GC03	

MEMBER TABLE			
FRAME LINE 1			
QUAN	MARK	PART	
1	EB-2	09W1305B	
1	EB-4	09W1305B	
1	EC-1	W12x26	
1	EC-2	W12x26	
1	DJ-1	8C060	
1	DJ-2	8C060	
1	DH-1	8C060	
1	DS-1	8C060	
6	G-1	8Z060	
1	G-2	8Z060	
1	G-3	8Z060	
5	G-4	8Z060	
1	G-5	8Z060	
1	G-6	8Z060	
1	G-7	8Z060	
1	G-8	8Z060	
1	G-9	8Z060	
6	G-10	8Z060	
1	G-11	8Z060	
1	G-12	8Z060	
1	EB-101	09W1305B	
2	DJ-101	8C060	
1	DS-100	8C060	
1	G-104	8Z060	
1	G-105	8Z099	
5	G-106	8Z099	
1	G-107	8Z089	
3	SJ-10	8C060	

FLANGE BRACE TABLE		
FRAME LINE 1		
VID	MARK	LENGTH
1	FB1A	2'-5 7/16"



START SHEETING LEFT ENDWALL SHEETING & TRIM: FRAME LINE 1
 PANELS: 26 Ga. KR2 - Fox Gray SP
 [A] PANELS: 26 Ga. KR2 - Forest Green SP
 TRIM: 26 Ga. - FOX GRAY

- GENERAL NOTES:
- USE 5/8" x 1 1/4" A325 BOLTS FOR ALL GIRT LAP AND GIRT TO CLIP CONNECTIONS.
 - REFER TO BEARING FRAME DETAILS [BF] FOR CONNECTION REQUIREMENTS OF RAFTER TO RAFTER AND RAFTER TO COLUMN.
 - ADEQUATE TEMPORARY BRACING MUST BE PROVIDED BY THE ERECTOR DURING THE ERECTION OF THE BUILDING.
 - ALL PRIMARY AND SECONDARY FRAMING, WIND BRACING, ETC. MUST BE INSTALLED, PROPERLY ALIGNED, BOLTED OR WELDED PRIOR TO THE INSTALLATION OF THE WALL PANELS.
 - IT MAY BE NECESSARY DURING ERECTION TO MAKE MINOR ADJUSTMENTS AND ALIGNMENTS TO BOTH PURLINS AND GIRTS PRIOR TO INSTALLING PANELS.
 - BUILDER TO FIELD CUT OR BACK LAP PANELS AS REQUIRED.
 - BUILDER TO FIELD CUT PANELS AS REQ'D.
 - DRAWINGS ARE NOT TO SCALE.
 - REF. [PL357] FOR CAULKING AT TRIM LAPS.
 - WARNING: PENCIL LEAD AND MARKER WILL CAUSE GALV. PANELS AND TRIM PIECES TO RUST. DO NOT USE THESE TO MARK ON PARTS.

DETAIL KEY	ISSUE	DESCRIPTION	BY	DATE
DETAIL NO.	A	APPROVAL	JLA	12-23-13
REFERENCE ERECTION DETAILS				

NOTE: ALL GIRT LAPS NOT INDICATED WILL BE 0'2 1/2" DOOR GIRTS.
 ALL GIRTS ATTACHED AT ONE END TO A DOOR JAMB ARE 16 GAGE UNLESS NOTED OTHERWISE.

CERTIFICATION EXTENDS ONLY FOR THE LOADS SPECIFIED ON KIRBY'S PURCHASE ORDER AS APPLIED TO THE STRUCTURAL COMPONENTS OF THE BUILDING DESIGNED AND SUPPLIED BY KIRBY BUILDING SYSTEMS, IF ERECTED AS INDICATED. NOTE THAT KIRBY'S ENGINEER IS NOT ACTING AS THE ENGINEER OF RECORD FOR THIS CONSTRUCTION PROJECT.

Kirby Building Systems
 A Nucor Company
 KIRBY BUILDING SYSTEMS • 124 KIRBY DRIVE • PORTLAND, TN 37148

FLYNN CONSTRUCTION CORP.
 COMMERCIAL INDUSTRIAL
 145 TRIPLE H WASHU, N.H. 03060
 PHONE: (603) 882-8177 • FAX: (603) 889-0494

TITLE: LEFT ENDWALL
 BUILDER: FLYNN CONSTRUCTION
 CUSTOMER: EVOLUTION ROCK
 LOCATION: PORTLAND, ME

DRN. BY:
 DATE:
 CKD. BY:
 DATE:
 DWG. NO: E11 OF 14



1/7/14