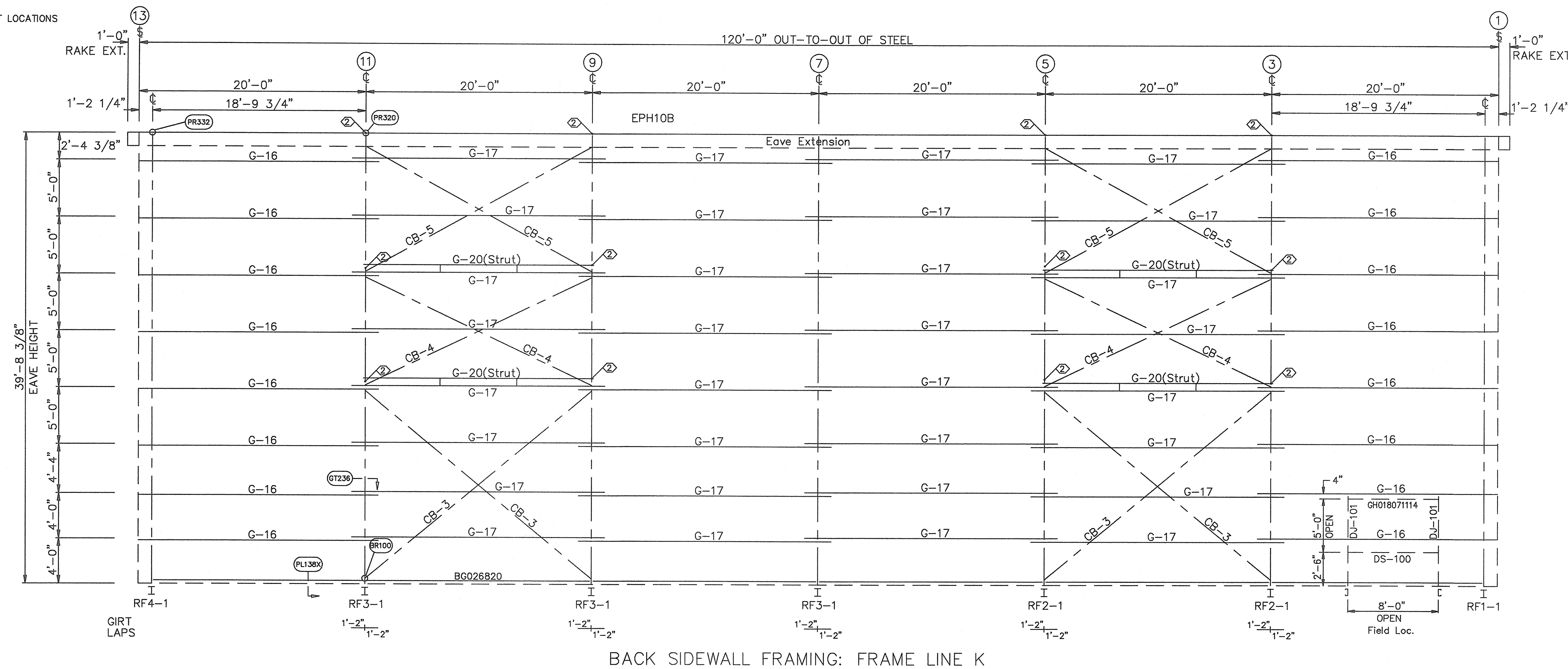
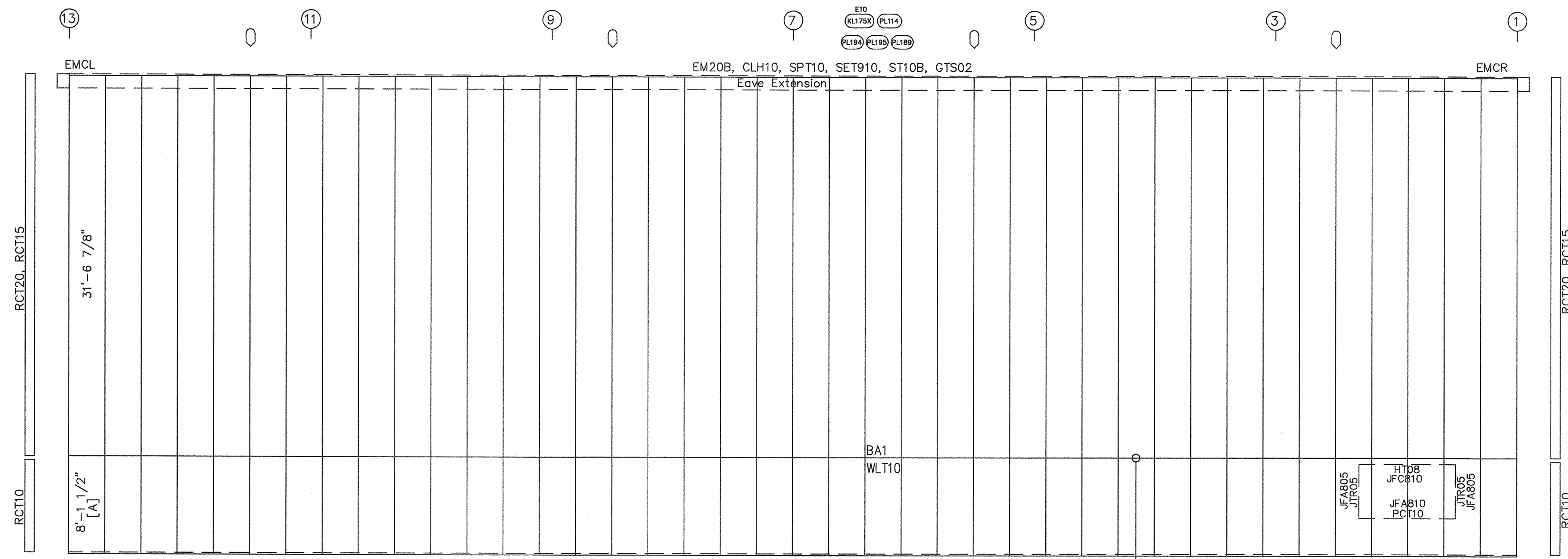


DOWNSPOUT LOCATIONS



BACK SIDEWALL FRAMING: FRAME LINE K

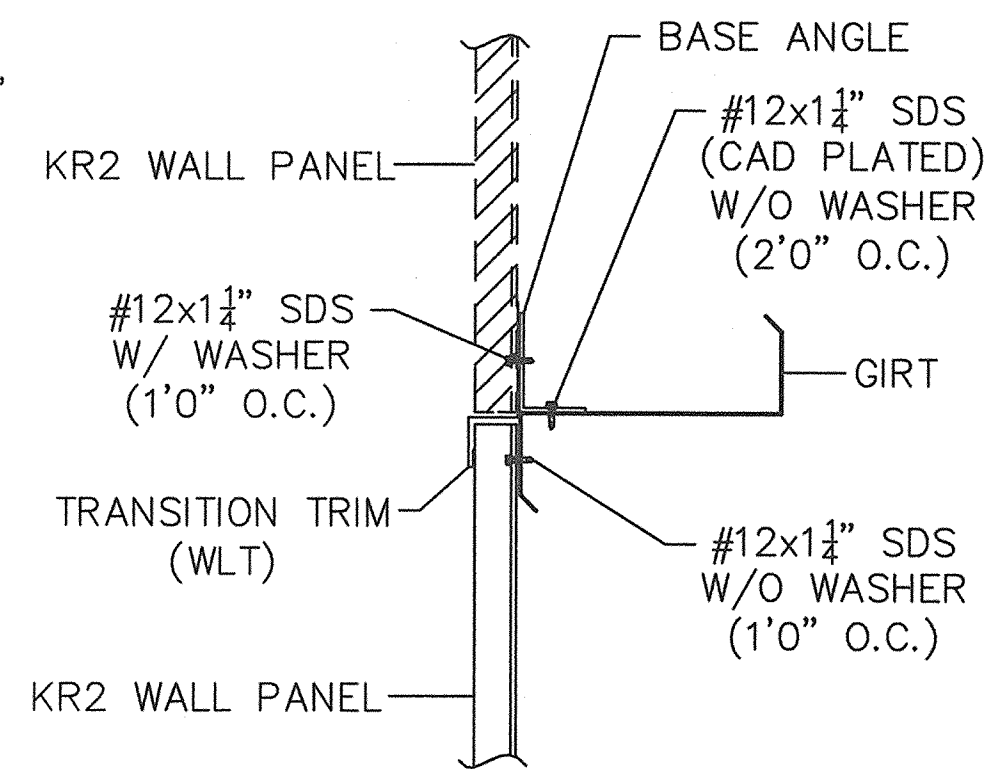


BACK SIDEWALL SHEETING & TRIM: FRAME LINE K

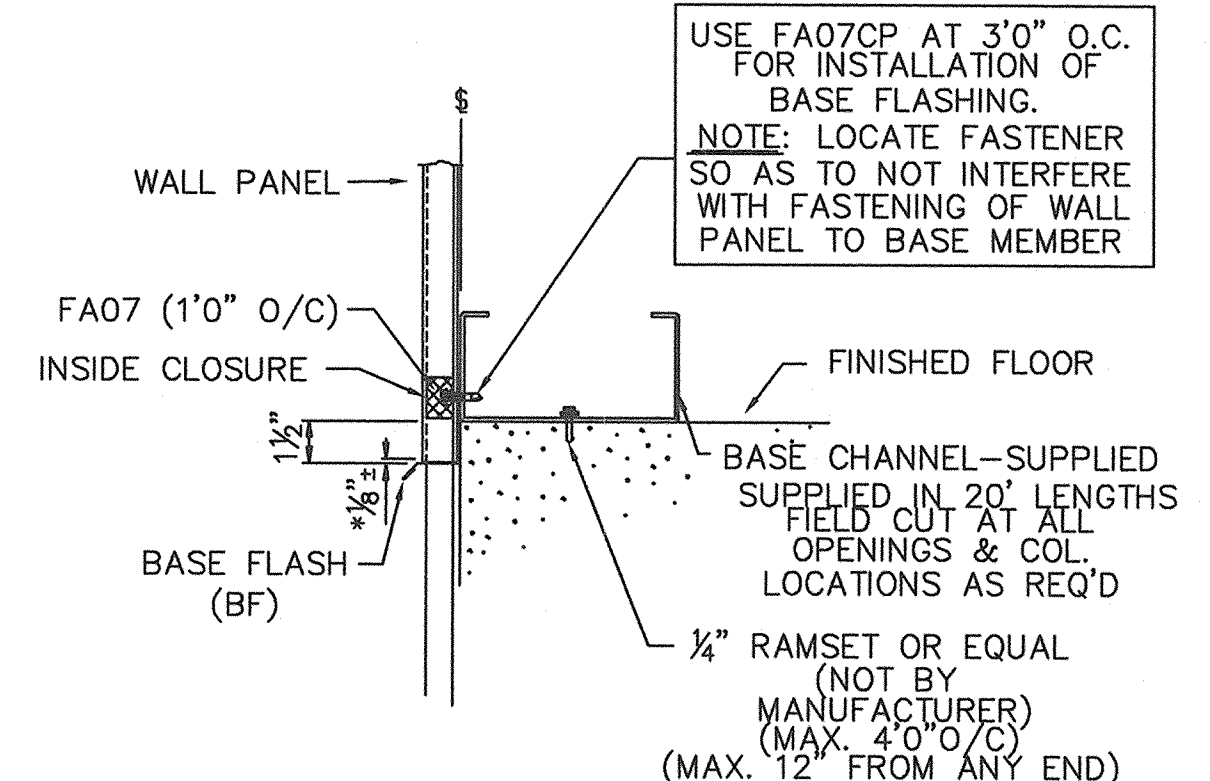
PANELS: 26 Ga. KR2 - Fox Gray SP
 [A] PANELS: 26 Ga. KR2 - Forest Green SP
 TRIM: 26 Ga. - FOX GRAY

| SPECIAL BOLTS | | | | |
|---------------|------|------|------|-------------|
| ID | QUAN | TYPE | DIA | LENGTH WASH |
| 2 | 4 | A325 | 1/2" | 1 1/2" 0 |

| MEMBER TABLE | | | |
|--------------|--------|------|-------|
| QUAN | MARK | LINE | PART |
| 16 | G-16 | | 8Z060 |
| 32 | G-17 | | 8Z060 |
| 4 | G-20 | | 8Z060 |
| 4 | CB-3 | | BR12 |
| 4 | CB-4 | | BR10 |
| 4 | CB-5 | | BR10 |
| 2 | DJ-101 | | 8C060 |
| 1 | DS-100 | | 8C060 |



PL331X



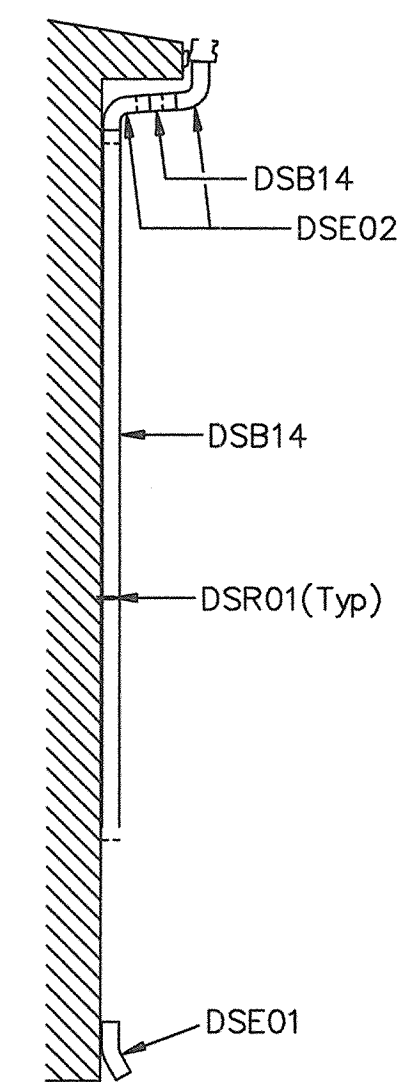
USE FA07CP AT 3'0" O.C. FOR INSTALLATION OF BASE FLASHING.
 NOTE: LOCATE FASTENER SO AS TO NOT INTERFERE WITH FASTENING OF WALL PANEL TO BASE MEMBER

DOWNSPOUT PARTS & LAYOUT:

- DSB14
- DSE01
- DSE02
- DSR01

*NOTE: ALLOW 1/8" GAP BETWEEN BASE OF PANEL AND CONCRETE.

PL138X



- GENERAL NOTES:
- USE 1/2" x 1 1/4" A325 BOLTS FOR ALL GIRT LAP AND GIRT TO CLIP CONNECTIONS.
 - THE DIAMETER OF THE BRACING IS DENOTED BY THE THIRD AND FOURTH DIGITS OF THE PIECE MARK. (EX. 08 = 1/2" x 10 = 8" dia)
 - ADEQUATE TEMPORARY BRACING MUST BE PROVIDED BY THE ERECTOR DURING THE ERECTION OF THE BUILDING.
 - ALL PRIMARY AND SECONDARY FRAMING, WIND BRACING, ETC. MUST BE INSTALLED, PROPERLY ALIGNED, BOLTED OR WELDED PRIOR TO THE INSTALLATION OF THE PANELS.
 - IT MAY BE NECESSARY DURING ERECTION TO MAKE MINOR ADJUSTMENTS AND ALIGNMENTS TO BOTH PURLINS AND GIRTS PRIOR TO INSTALLING PANELS.

- ERECTOR TO FIELD SLOT FLUSH FRAME GIRTS FOR CABLE BRACING.
- BUILDER TO FIELD CUT OR BACK LAP PANELS AS REQUIRED.
- BEFORE INSTALLATION OF WALL PANELS, IT IS IMPORTANT TO REFERENCE WALL PANEL FASTENER LAYOUT DETAILS ([PL153] KIRBYWALL [PL149] KIRBYRIB I) TO INSURE CORRECT USAGE OF FASTENERS.
- USE RVTCP AT 5'0" C/C FOR TEMPORARY INSTALLATION OF CLH TRIM.
- DRAWINGS ARE NOT TO SCALE.
- REF. [PL357] FOR CAULKING AT TRIM LAPS
- WARNING: PENCIL LEAD AND MARKER WILL CAUSE GALV. PANELS AND TRIM PIECES TO RUST. DO NOT USE THESE TO MARK ON PARTS.

| DETAIL KEY | ISSUE | DESCRIPTION | BY | DATE |
|----------------------------|-------|-------------|-----|----------|
| DETAIL NO. | A | APPROVAL | JLA | 12-23-13 |
| REFERENCE ERECTION DETAILS | | | | |

NOTE: ALL GIRT LAPS NOT INDICATED WILL BE 0'2 1/2" DOOR GIRTS. ALL GIRTS ATTACHED AT ONE END TO A DOOR JAMB ARE 16 GAGE UNLESS NOTED OTHERWISE.

| DETAIL NO. | ISSUE | DESCRIPTION | BY | DATE |
|------------|-------|-------------|-----|----------|
| | A | APPROVAL | JLA | 12-23-13 |

CERTIFICATION EXTENDS ONLY FOR THE LOADS SPECIFIED ON KIRBY'S PURCHASE ORDER AS APPLIED TO THE STRUCTURAL COMPONENTS OF THE BUILDING DESIGNED AND SUPPLIED BY KIRBY BUILDING SYSTEMS, IF ERECTED AS INDICATED. NOTE THAT KIRBY'S ENGINEER IS NOT ACTING AS THE ENGINEER OF RECORD FOR THIS CONSTRUCTION PROJECT.

| | | |
|-----------------------------|---|---|
| | KIRBY BUILDING SYSTEMS • 124 KIRBY DRIVE • PORTLAND, TN 37148 | |
| | TITLE: BACK SIDEWALL | DRN. BY: |
| BUILDER: FLYNN CONSTRUCTION | DATE: | FLYNN CONSTRUCTION CORP. COMMERCIAL INDUSTRIAL 145 TRIPLE HARBOR, N.H. 03060 PHONE: (603) 882-8177 • FAX: (603) 889-0494 |
| CUSTOMER: EVOLUTION ROCK | CKD. BY: | |
| LOCATION: PORTLAND, ME | DATE: | |
| ID NUMBER: K13B0648BR1 | MBS | JOB NO: K13B0648A |
| | | DWG. NO: EB 0F.14 |

