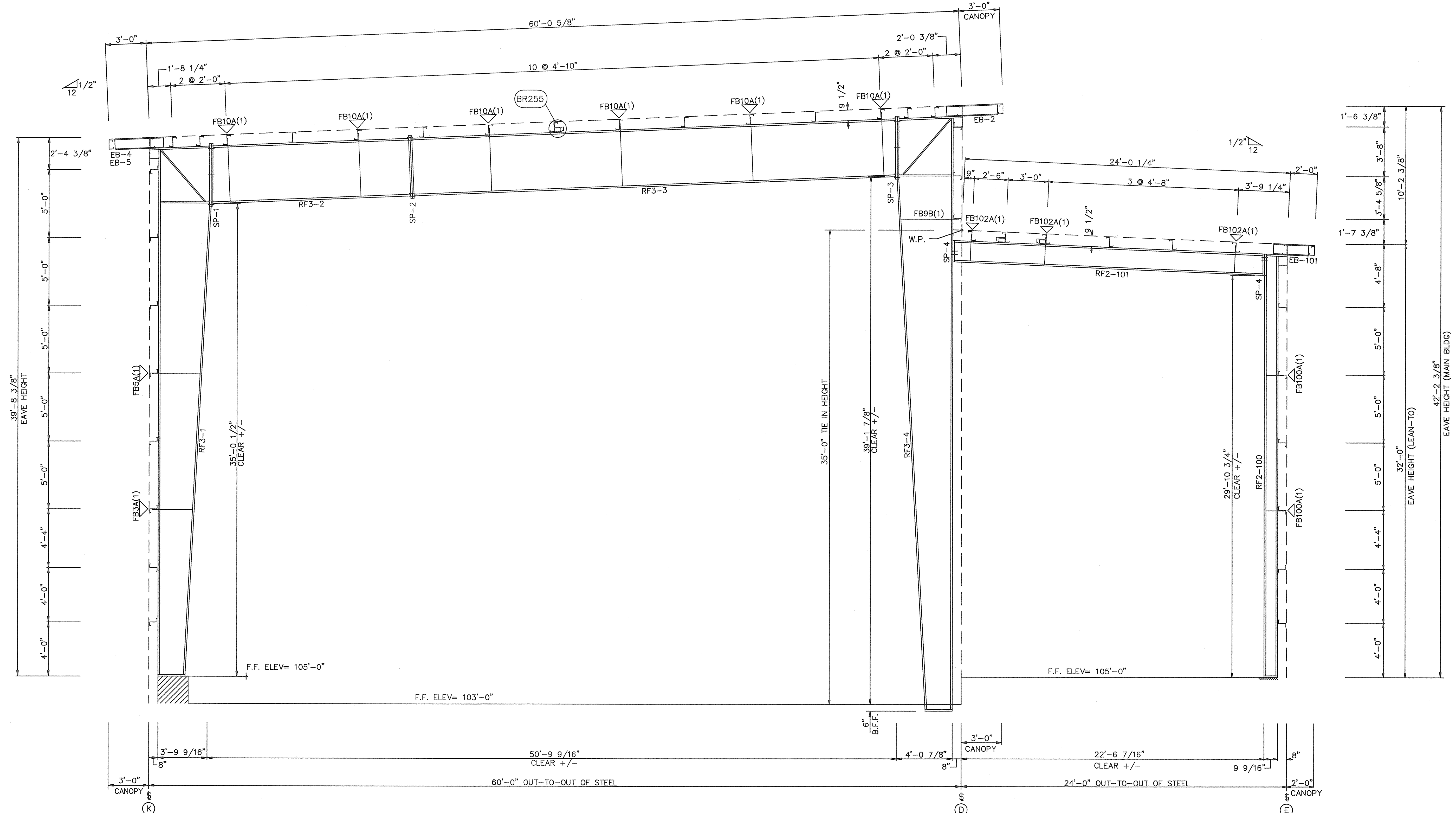


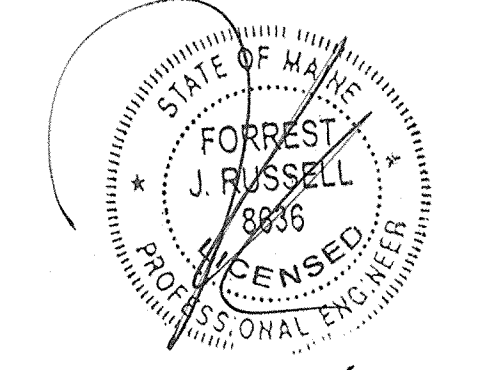
SPLICE PLATE & BOLT TABLE										
Mark	Qty		Bot	Int	Type	Dia	Length	Width	Thick	Length
	Top	Bot								
SP-1	4	4	2	A325	3/4"	2 1/2"	8"	1 1/2"	4'-7 3/8"	3/8"
SP-2	4	4	2	A325	3/4"	2 1/2"	6"	1 1/2"	4'-7 5/16"	3/8"
SP-3	4	4	2	A325	3/4"	2 1/2"	1'-0"	5/8"	4'-7 7/16"	3/8"
SP-4	4	0	0	A325	3/4"	2 1/2"	6"	3/8"	1'-5 9/16"	3/8"

FLANGE BRACES: (1) One Side; (2) Two Sides
 FBxxA(1)
 A - L175x075
 B - L2X2X1/8

MEMBER	TABLE	Weight	Web Depth		Web Plate		Outside Flange		Inside Flange	
			Start/End	Thick	Length	W x Thk x Length	W x Thk x Length			
RF3-1	1699		21.0/34.8	0.188	240.0	8 x 1/4" x 466.6	8 x 5/16" x 417.4			
RF3-2	962		34.8/45.0	0.220	228.5	8 x 1/4" x 53.0	6 x 5/16" x 178.0			
RF3-3	2008		48.0/48.0	0.275	178.0	6 x 1/4" x 234.0	6 x 5/16" x 195.6			
RF3-4	2943		48.0/48.0	0.220	240.0	6 x 5/16" x 197.6	12 x 1/2" x 238.6			
RF2-100	468		48.0/34.7	0.220	232.2	12 x 1/2" x 291.9	12 x 3/8" x 234.4			
RF2-101	492		34.7/21.0	0.188	240.0	12 x 3/8" x 234.0	5 x 5/16" x 357.9			
			9.0/9.0	0.135	240.0	5 x 1/4" x 374.2	6 x 5/16" x 277.9			
			16.0/16.0	0.150	90.9					
			16.0/16.0	0.164	187.6					



RIGID FRAME ELEVATION: FRAME LINE 7 9 11



1/7/14

- REFERENCE ELEVATION = 100'-0".
- ALL BASE PLATES AT REFERENCE ELEVATION UNLESS NOTED.
- SEE ANCHOR BOLT PLAN FOR ANCHOR BOLT SIZES AND DETAILS.
- FLANGE BRACES ARE REQUIRED ON TWO SIDES (2) OR ONE SIDE (1) AS NOTED.
- ALL MAIN FRAME CONNECTION BOLTS ARE A325 BOLTS.
- FOR FLANGE BRACE CONNECTIONS IN THE ROOF, SEE DETAIL BR105. FOR FLANGE BRACE CONNECTIONS IN THE WALLS, SEE DETAIL BR205.
- ALL FLANGE BRACE LOCATIONS MARKED TWO SIDES (2) AT EXPANDABLE END FRAMES REQUIRE ONE FLANGE BRACE TO BE INSTALLED AT THE TIME OF ERECTION, WHILE THE OTHER IS TO BE STORED AND USED AT THE TIME OF A FUTURE ADDITION.
- ALL CONNECTION BOLTS OR FIELD WELDS, PURLINS AND ALL FLANGE BRACES MUST BE PROPERLY INSTALLED ON MAIN FRAMES AS THEY ARE ERECTED AND BEFORE ERECTION LOADS ARE APPLIED.

CERTIFICATION EXTENDS ONLY FOR THE LOADS SPECIFIED ON KIRBY'S PURCHASE ORDER AS APPLIED TO THE STRUCTURAL COMPONENTS OF THE BUILDING DESIGNED AND SUPPLIED BY KIRBY BUILDING SYSTEMS, IF ERECTED AS INDICATED. NOTE THAT KIRBY'S ENGINEER IS NOT ACTING AS THE ENGINEER OF RECORD FOR THIS CONSTRUCTION PROJECT.

ISSUE	DESCRIPTION	BY	DATE
A	APPROVAL	JLA	12-23-13

KIRBY BUILDING SYSTEMS • 124 KIRBY DRIVE • PORTLAND, TN 37148

FLYNN CONSTRUCTION CORP.

COMMERCIAL • INDUSTRIAL

145 TRIPLE HARBOR, N.H. 03060

PHONE: (603) 862-8177 • FAX: (603) 869-0494

TITLE: CROSS SECTION	DRN. BY:
BUILDER: FLYNN CONSTRUCTION	DATE:
CUSTOMER: EVOLUTION ROCK	CKD. BY:
LOCATION: PORTLAND, ME	DATE:
ID NUMBER: K13B0648MBR1/LTR1 MBS	JOB NO: K13B0648A DWG. NO: E4 OF 14