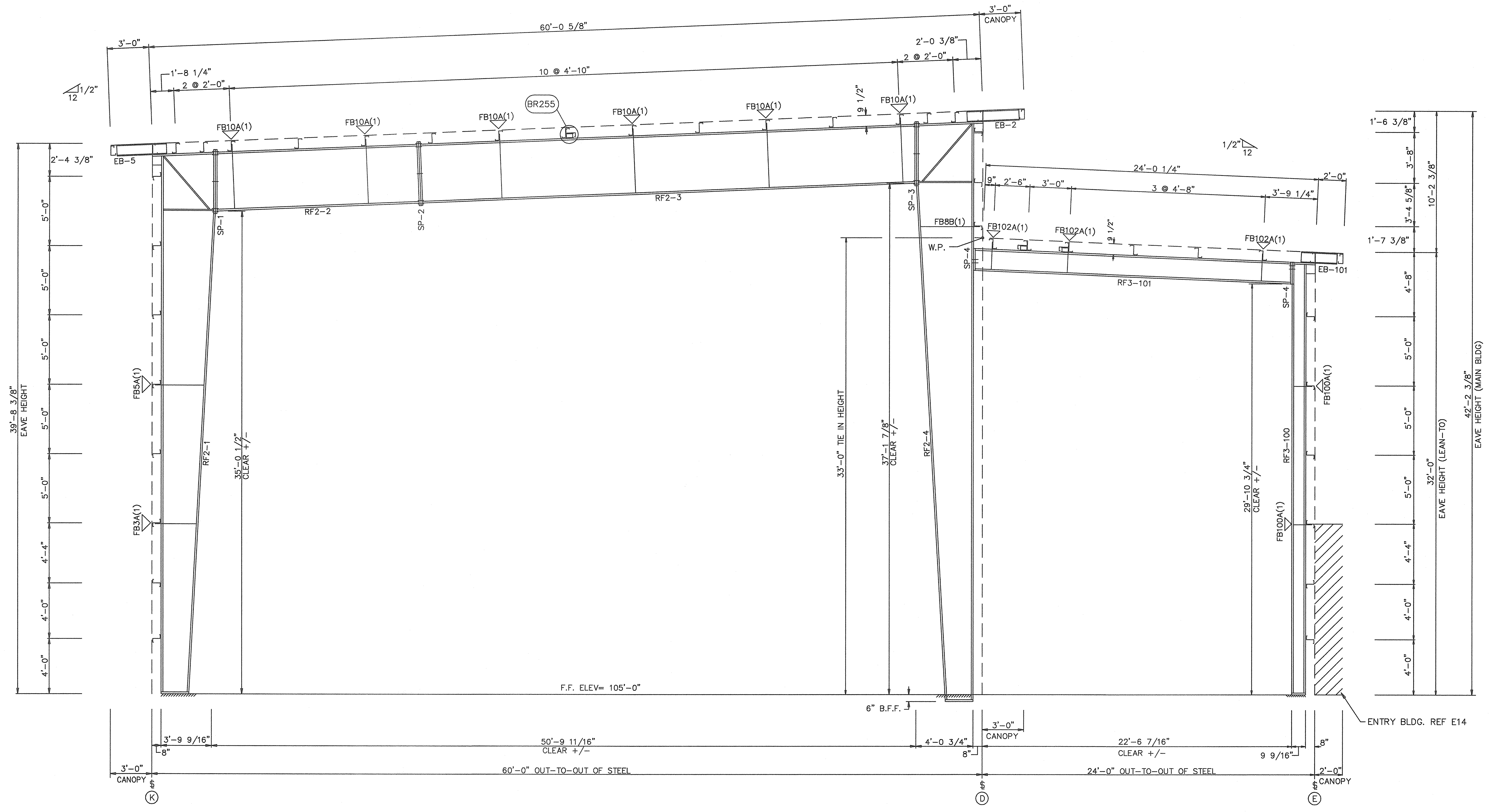


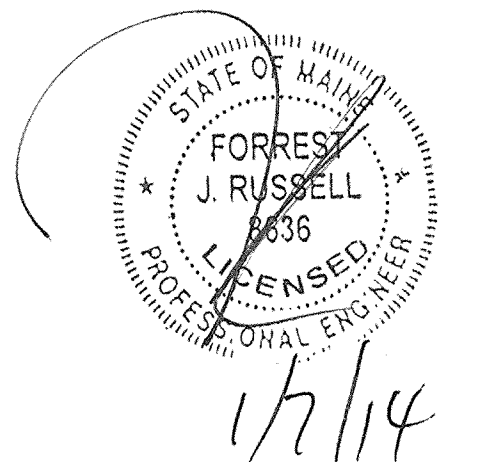
SPLICE PLATE & BOLT TABLE										
Mark	Qty	Top	Bot	Int	Type	Dia	Length	Width	Thick	Length
SP-1	4	4	2		A325	3/4"	2 1/2"	6"	1/2"	4'-7 3/8"
SP-2	4	4	2		A325	3/4"	2 1/2"	6"	1/2"	4'-7 5/8"
SP-3	4	4	2		A325	3/4"	2 1/2"	6"	1/2"	4'-7 3/8"
SP-4	4	0	0		A325	3/4"	2 1/2"	6"	3/8"	1'-5 9/16"

FLANGE BRACES: (1) One Side; (2) Two Sides
 FBxxA(1)
 A - L175x075
 B - L2X2X1/8

MEMBER TABLE									
Mark	Weight	Web Depth	Start/End	Web Thick	Web Length	Outside Flange	W x Thk x Length	Inside Flange	W x Thk x Length
RF2-1	1699	21.0/34.8	0.188	240.0	228.5	8 x 1/4" x 466.6	8 x 5/16" x 417.4		
RF2-2	962	34.8/45.0	0.220	240.0	228.5	8 x 1/4" x 53.0			
RF2-3	2008	48.0/48.0	0.275	178.0	191.6	6 x 5/16" x 178.0	6 x 5/16" x 178.0		
RF2-4	2582	48.0/48.0	0.220	240.0	208.2	6 x 1/4" x 234.0	6 x 1/4" x 234.0		
RF3-100	463	48.0/48.0	0.275	191.6	191.6	6 x 5/16" x 197.6	6 x 5/16" x 197.6		
RF3-101	492	48.0/35.5	0.220	208.2	240.0	12 x 3/8" x 56.2	12 x 3/8" x 21.9		
		35.5/21.0	0.188	240.0	240.0	12 x 3/8" x 480.0			
		9.0/9.0	0.135	240.0	240.0	5 x 1/4" x 374.2	5 x 5/16" x 357.9		
		9.0/9.0	0.135	134.6	134.6	5 x 1/4" x 17.0			
		16.0/16.0	0.150	90.9	90.9	6 x 5/16" x 277.9	6 x 1/4" x 277.9		
		16.0/16.0	0.164	187.6	187.6				



RIGID FRAME ELEVATION: FRAME LINE 3 5



- REFERENCE ELEVATION = 100'-0".
- ALL BASE PLATES AT REFERENCE ELEVATION UNLESS NOTED.
- SEE ANCHOR BOLT PLAN FOR ANCHOR BOLT SIZES AND DETAILS.
- FLANGE BRACES ARE REQUIRED ON TWO SIDES (2) OR ONE SIDE (1) AS NOTED.
- ALL MAIN FRAME CONNECTION BOLTS ARE A325 BOLTS.
- FOR FLANGE BRACE CONNECTIONS IN THE ROOF, SEE DETAIL BR103. FOR FLANGE BRACE CONNECTIONS IN THE WALLS, SEE DETAIL BR205.
- ALL FLANGE BRACE LOCATIONS MARKED TWO SIDES (2) AT EXPANDABLE END FRAMES REQUIRE ONE FLANGE BRACE TO BE INSTALLED AT THE TIME OF ERECTION, WHILE THE OTHER IS TO BE STORED AND USED AT THE TIME OF A FUTURE ADDITION.
- ALL CONNECTION BOLTS OR FIELD WELDS, PURLINS AND ALL FLANGE BRACES MUST BE PROPERLY INSTALLED ON MAIN FRAMES AS THEY ARE ERECTED AND BEFORE ERECTION LOADS ARE APPLIED.

ISSUE	DESCRIPTION	BY	DATE
A	APPROVAL	JLA	12-23-13

Kirby Building Systems
 A Nucor Company
 KIRBY BUILDING SYSTEMS • 124 KIRBY DRIVE • PORTLAND, TN 37148
 TITLE: CROSS SECTION
 DRN. BY:
 BUILDER: FLYNN CONSTRUCTION
 DATE:
 CUSTOMER: EVOLUTION ROCK
 CKD. BY:
 LOCATION: PORTLAND, ME
 DATE:
 ID NUMBER: K13B0648MBR1/LTR1 MBS JOB NO: K13B0648A DWG. NO: E3 OF.14

CERTIFICATION EXTENDS ONLY FOR THE LOADS SPECIFIED ON KIRBY'S PURCHASE ORDER AS APPLIED TO THE STRUCTURAL COMPONENTS OF THE BUILDING DESIGNED AND SUPPLIED BY KIRBY BUILDING SYSTEMS, IF ERECTED AS INDICATED. NOTE THAT KIRBY'S ENGINEER IS NOT ACTING AS THE ENGINEER OF RECORD FOR THIS CONSTRUCTION PROJECT.