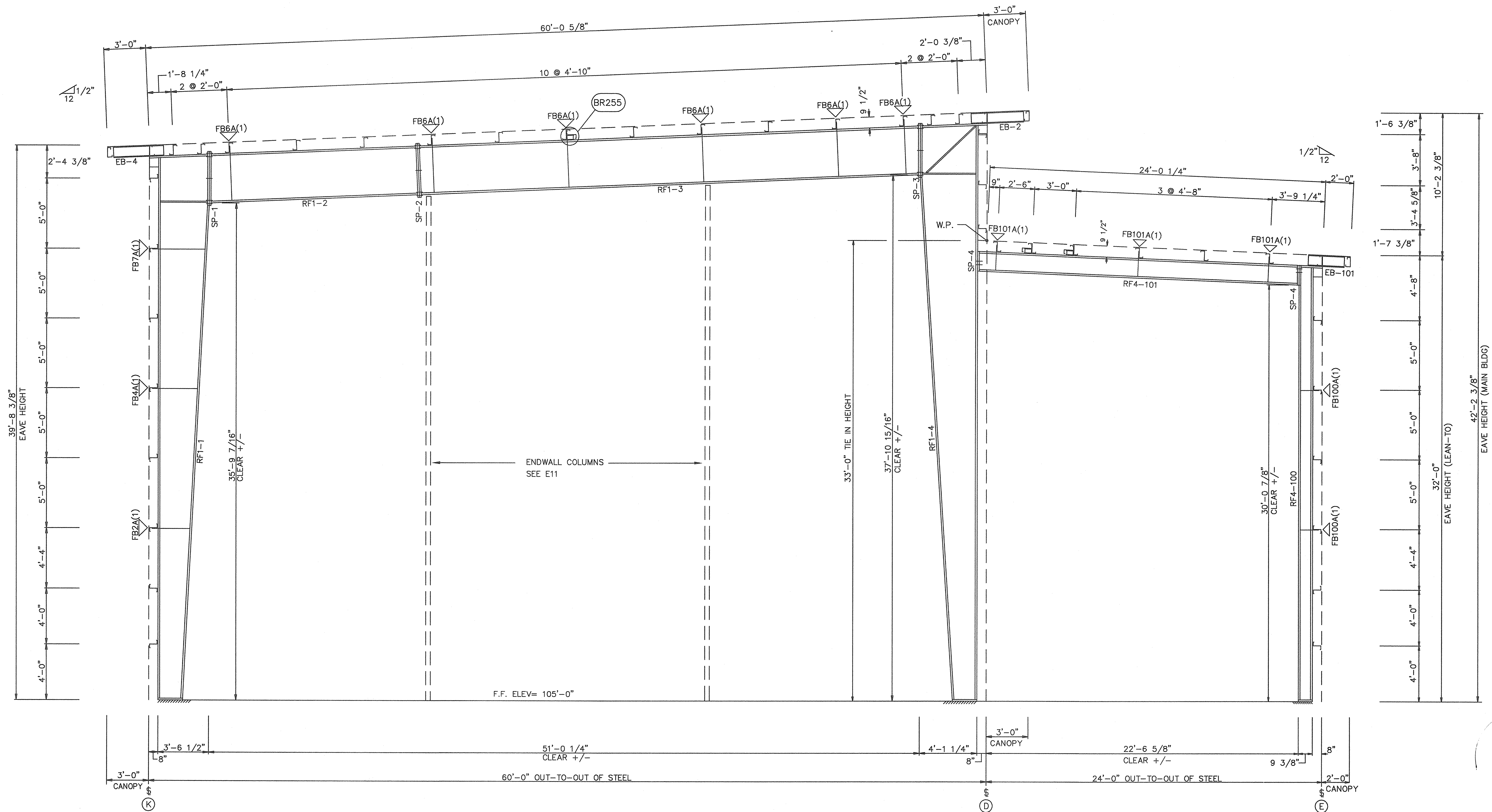


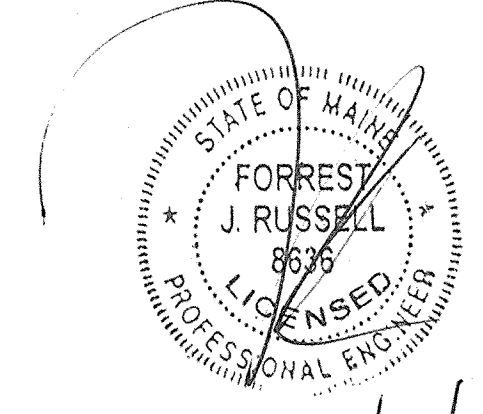
SPLICE PLATE & BOLT TABLE										
Mark	Qty	Top	Bot	Int	Type	Dia	Length	Width	Thick	Length
SP-1	4	4	2	A325	3/4"	2 1/2"	6"	1 1/2"	3'-10 5/16"	
SP-2	4	4	2	A325	3/4"	2 1/2"	6"	3/8"	3'-10 1/4"	
SP-3	4	4	2	A325	3/4"	2 1/2"	6"	1'-0"	3'-11"	
SP-4	4	0	0	A325	3/4"	2 1/2"	6"	3/8"	1'-3 7/16"	

FLANGE BRACES: (1) One Side; (2) Two Sides
 FBxxA(1)
 A - L175x075

MEMBER TABLE									
Mark	Weight	Web Depth		Web Plate		Outside Flange		Inside Flange	
		Start	End	Thick	Length	W x Thk x Length	W x Thk x Length	W x Thk x Length	W x Thk x Length
RF1-1	1283	18.0	31.5	0.150	240.0	6 x 1/4" x 466.6	6 x 1/4" x 426.3		
RF1-2	660	31.5	42.0	0.220	228.3	6 x 1/4" x 50.0	6 x 1/4" x 180.5		
RF1-3	1449	39.0	39.0	0.188	240.0	6 x 1/4" x 431.7	6 x 3/16" x 234.0		
RF1-4	3389	39.0	39.0	0.220	191.7		6 x 1/4" x 196.1		
		48.0	48.0	0.220	44.9	12 x 5/8" x 56.4	12 x 5/8" x 451.9		
		48.0	34.0	0.220	210.9	12 x 5/8" x 15.9	12 x 5/8" x 480.0		
RF4-100	394	34.0	18.0	0.188	240.0	5 x 3/16" x 374.3	5 x 3/16" x 360.0		
		9.0	9.0	0.135	134.6				
RF4-101	343	14.0	14.0	0.135	38.5	5 x 1/4" x 277.9	5 x 3/16" x 277.9		
		14.0	14.0	0.135	240.0				



RIGID FRAME ELEVATION: FRAME LINE 1



1/7/14

- REFERENCE ELEVATION = 100' 0".
- ALL BASE PLATES AT REFERENCE ELEVATION UNLESS NOTED.
- SEE ANCHOR BOLT PLAN FOR ANCHOR BOLT SIZES AND DETAILS.
- FLANGE BRACES ARE REQUIRED ON TWO SIDES (2) OR ONE SIDE (1) AS NOTED.
- ALL MAIN FRAME CONNECTION BOLTS ARE A325 BOLTS.
- FOR FLANGE BRACE CONNECTIONS IN THE ROOF, SEE DETAIL BR105. FOR FLANGE BRACE CONNECTIONS IN THE WALLS, SEE DETAIL BR205.
- ALL FLANGE BRACE LOCATIONS MARKED TWO SIDES (2) AT EXPANDABLE END FRAMES REQUIRE ONE FLANGE BRACE TO BE INSTALLED AT THE TIME OF ERECTION, WHILE THE OTHER IS TO BE STORED AND USED AT THE TIME OF A FUTURE ADDITION.
- ALL CONNECTION BOLTS OR FIELD WELDS, PURLINS AND ALL FLANGE BRACES MUST BE PROPERLY INSTALLED ON MAIN FRAMES AS THEY ARE ERECTED AND BEFORE ERECTION LOADS ARE APPLIED.

CERTIFICATION EXTENDS ONLY FOR THE LOADS SPECIFIED ON KIRBY'S PURCHASE ORDER AS APPLIED TO THE STRUCTURAL COMPONENTS OF THE BUILDING DESIGNED AND SUPPLIED BY KIRBY BUILDING SYSTEMS, IF ERECTED AS INDICATED. NOTE THAT KIRBY'S ENGINEER IS NOT ACTING AS THE ENGINEER OF RECORD FOR THIS CONSTRUCTION PROJECT.

ISSUE	DESCRIPTION	BY	DATE
A	APPROVAL	JLA	12-23-13

KIRBY BUILDING SYSTEMS • 124 KIRBY DRIVE • PORTLAND, TN 37148			
TITLE:	CROSS SECTION	DRN. BY:	
BUILDER:	FLYNN CONSTRUCTION	DATE:	
CUSTOMER:	EVOLUTION ROCK	CKD. BY:	
LOCATION:	PORTLAND, ME	DATE:	
ID NUMBER:	K13B0648MBR1/LTR1	MBS	
JOB NO.:	K13B0648A		
DWG. NO.:	E2	OF. 14	