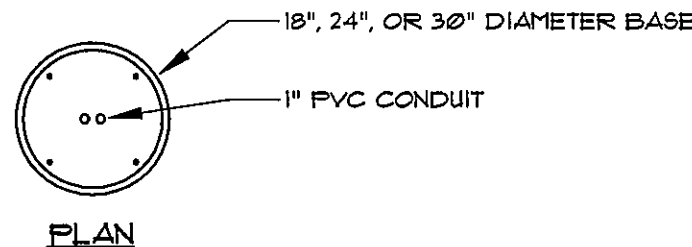
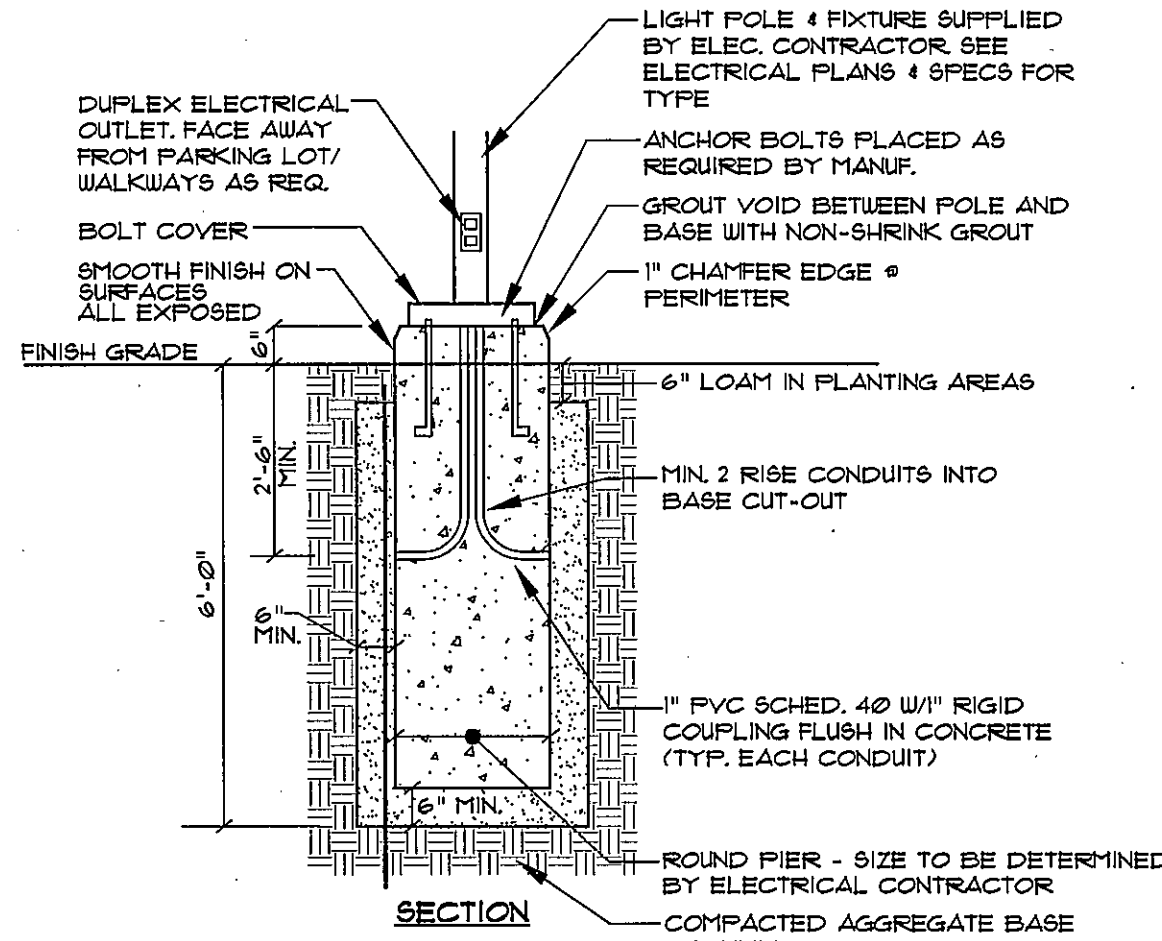


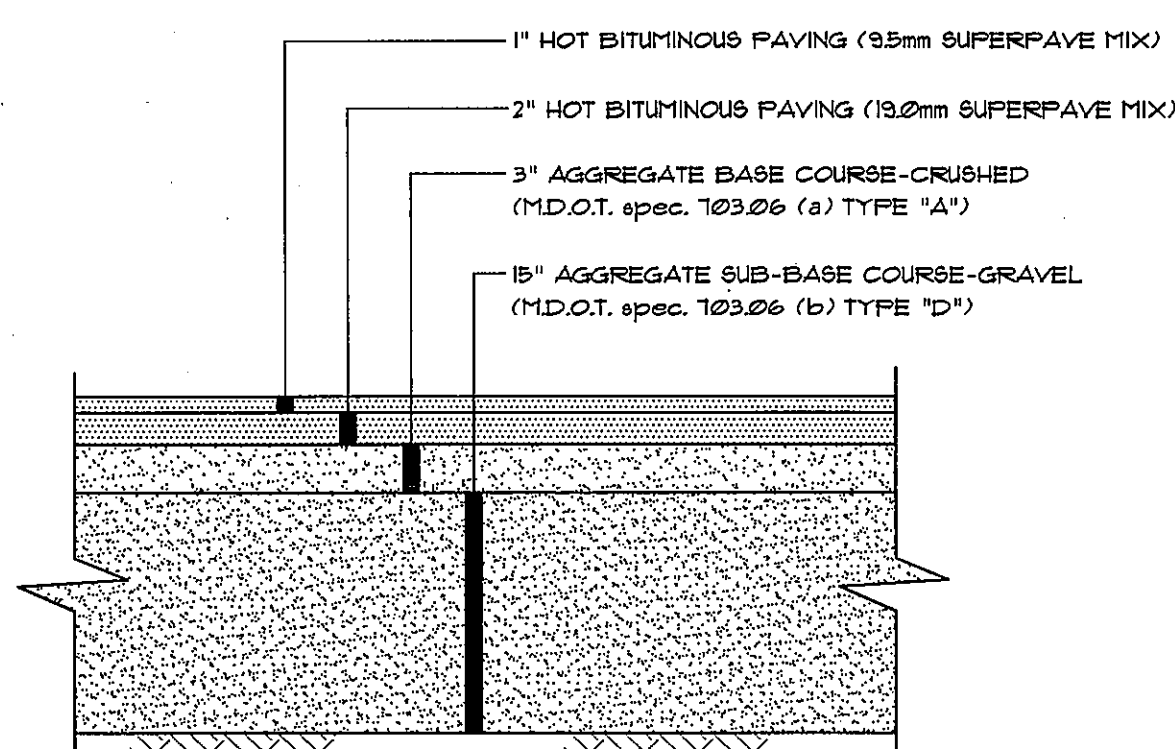
CONSTRUCTION NOTES

- ALL WORK SHALL CONFORM TO THE APPLICABLE CODES AND ORDINANCES.
- CONTRACTOR SHALL VISIT THE SITE AND FAMILIARIZE HIM OR HERSELF WITH ALL CONDITIONS AFFECTING THE PROPOSED WORK AND SHALL MAKE PROVISIONS AS TO THE COST THEREOF. CONTRACTOR SHALL BE RESPONSIBLE FOR FAMILIARIZING HIM OR HERSELF WITH ALL CONTRACT DOCUMENTS, FIELD CONDITIONS AND DIMENSIONS AND CONFIRMING THAT THE WORK MAY BE ACCOMPLISHED AS SHOWN PRIOR TO PROCEEDING WITH CONSTRUCTION. ANY DISCREPANCIES SHALL BE BROUGHT TO THE ATTENTION OF THE ENGINEER PRIOR TO THE COMMENCEMENT OF WORK.
- CONTRACTOR SHALL NOTIFY ENGINEER OF ALL PRODUCTS OR ITEMS NOTED AS "EXISTING" WHICH ARE NOT FOUND IN THE FIELD.
- INSTALL ALL EQUIPMENT AND MATERIALS IN ACCORDANCE WITH MANUFACTURER'S RECOMMENDATIONS AND OWNER'S REQUIREMENTS UNLESS SPECIFICALLY OTHERWISE INDICATED OR WHERE LOCAL CODES OR REGULATIONS TAKE PRECEDENCE.
- CONTRACTOR SHALL VERIFY ALL DIMENSIONS AND CONDITIONS IN THE FIELD PRIOR TO FABRICATION AND ERECTION OF ANY MATERIAL. ANY UNUSUAL CONDITIONS SHALL BE REPORTED TO THE ATTENTION OF THE ENGINEER.
- CONTRACTOR SHALL CLEAN AND REMOVE DEBRIS AND SEDIMENT DEPOSITED ON PUBLIC STREETS, SIDEWALKS, ADJACENT AREAS, OR OTHER PUBLIC WAYS DUE TO CONSTRUCTION.
- CONTRACTOR SHALL INCORPORATE PROVISIONS AS NECESSARY IN CONSTRUCTION TO PROTECT EXISTING STRUCTURES, PHYSICAL FEATURES, AND MAINTAIN SITE STABILITY DURING CONSTRUCTION. CONTRACTOR SHALL RESTORE ALL AREAS TO ORIGINAL CONDITION AND AS DIRECTED BY DESIGN DRAWINGS.
- SITE CONTRACTOR SHALL OBTAIN ALL REQUIRED PERMITS PRIOR TO CONSTRUCTION.
- ALL EROSION AND SEDIMENT CONTROL MEASURES SHALL BE INSTALLED IN ACCORDANCE WITH "MAINE EROSION AND SEDIMENTATION CONTROL HANDBOOK FOR CONSTRUCTION: BEST MANAGEMENT PRACTICES" PUBLISHED BY THE CUMBERLAND COUNTY SOIL AND WATER CONSERVATION DISTRICT AND MAINE DEPARTMENT OF ENVIRONMENTAL PROTECTION, MARCH 2003 OR LATEST EDITION. IT SHALL BE THE RESPONSIBILITY OF THE CONTRACTOR TO POSSESS A COPY OF THE EROSION CONTROL PLAN AT ALL TIMES.
- THE CONTRACTOR IS HEREBY CAUTIONED THAT ALL SITE FEATURES SHOWN HEREON ARE BASED ON FIELD OBSERVATIONS BY THE SURVEYOR AND BY INFORMATION PROVIDED BY UTILITY COMPANIES. THE INFORMATION IS NOT TO BE RELIED ON AS BEING EXACT OR COMPLETE. THE CONTRACTOR SHALL CONTACT DIG SAFE (1-888-DIGSAFE) AT LEAST THREE (3) BUT NOT MORE THAN THIRTY (30) DAYS PRIOR TO COMMENCEMENT OF EXCAVATION OR DEMOLITION TO VERIFY HORIZONTAL AND VERTICAL LOCATION OF ALL UTILITIES.
- CONTRACTOR SHALL BE AWARE THAT DIG SAFE ONLY NOTIFIES ITS "MEMBER" UTILITIES ABOUT THE DIG. WHEN NOTIFIED, DIG SAFE WILL ADVISE CONTRACTOR OF MEMBER UTILITIES IN THE AREA. CONTRACTOR IS RESPONSIBLE FOR IDENTIFYING AND CONTACTING NON-MEMBER UTILITIES DIRECTLY. NON-MEMBER UTILITIES MAY INCLUDE TOWN OR CITY WATER AND SEWER DISTRICTS AND SMALL LOCAL UTILITIES, AS WELL AS USG PUBLIC WORKS SYSTEMS.
- CONTRACTORS SHALL BE RESPONSIBLE FOR COMPLIANCE WITH THE REQUIREMENTS OF 23 MRS.A 3360-A. IT SHALL BE THE RESPONSIBILITY OF THE CONTRACTOR TO COORDINATE WITH THE APPROPRIATE UTILITIES TO OBTAIN AUTHORIZATION PRIOR TO RELOCATION OF ANY EXISTING UTILITIES WHICH CONFLICT WITH THE PROPOSED IMPROVEMENTS SHOWN ON THESE PLANS. IF A UTILITY CONFLICT ARISES, THE CONTRACTOR SHALL IMMEDIATELY NOTIFY THE OWNER, THE MUNICIPALITY AND APPROPRIATE UTILITY COMPANY PRIOR TO PROCEEDING WITH ANY RELOCATION.
- ALL PAVEMENT MARKINGS AND DIRECTIONAL SIGNAGE SHOWN ON THE PLAN SHALL CONFORM TO THE MANUAL OF UNIFORM TRAFFIC CONTROL DEVICES (MUTCD) STANDARDS.
- ALL PAVEMENT JOINTS SHALL BE SAWCUT PRIOR TO PAVING TO PROVIDE A DURABLE AND UNIFORM JOINT.
- NO HOLES, TRENCHES OR STRUCTURES SHALL BE LEFT OPEN OVERNIGHT IN ANY EXCAVATION ACCESSIBLE TO THE PUBLIC OR IN PUBLIC RIGHTS-OF-WAY.
- ALL WORK WITHIN THE PUBLIC RIGHT-OF-WAY SHALL REQUIRE A M.D.O.T. PERMIT AS WELL AS PERMITS FROM THE CITY AS AFFICABLE.
- IMMEDIATELY UPON COMPLETION OF CUTS/FILLS, THE CONTRACTOR SHALL STABILIZE DISTURBED AREAS IN ACCORDANCE WITH EROSION CONTROL NOTES AND AS SPECIFIED ON PLANS.
- THE CONTRACTOR SHALL BE FULLY AND SOLELY RESPONSIBLE FOR THE REMOVAL, REPLACEMENT AND RECTIFICATION OF ALL DAMAGED AND DEFECTIVE MATERIAL AND WORKMANSHIP IN CONNECTION WITH THE CONTRACT WORK. THE CONTRACTOR SHALL REPLACE OR REPAIR AS DIRECTED BY THE OWNER ALL SUCH DAMAGED OR DEFECTIVE MATERIALS WHICH APPEAR WITHIN A PERIOD OF ONE YEAR FROM THE DATE OF SUBSTANTIAL COMPLETION.
- ALL WORK PERFORMED BY THE GENERAL CONTRACTOR AND/OR TRADE SUBCONTRACTOR SHALL CONFORM TO THE REQUIREMENTS OF LOCAL, STATE OR FEDERAL LAWS, AS WELL AS ANY OTHER GOVERNING REQUIREMENTS, WHETHER OR NOT SPECIFIED ON THE DRAWINGS.
- WHERE THE TERMS "APPROVED EQUAL," "OTHER APPROVED," "EQUAL TO," "ACCEPTABLE" OR OTHER GENERAL QUALIFYING TERMS ARE USED IN THESE NOTES, IT SHALL BE UNDERSTOOD THAT REFERENCE IS MADE TO THE RULING AND JUDGMENT OF SEBAGO TECHINCS, INC.
- THE GENERAL CONTRACTOR SHALL PROVIDE ALL NECESSARY PROTECTION FOR THE WORK UNTIL TURNED OVER TO THE OWNER.
- THE GENERAL CONTRACTOR SHALL MAINTAIN A CURRENT AND COMPLETE SET OF CONSTRUCTION DRAWINGS ON SITE DURING ALL PHASES OF CONSTRUCTION FOR USE OF ALL TRADES.
- THE CONTRACTOR SHALL TAKE FULL RESPONSIBILITY FOR ANY CHANGES AND DEVIATION OF APPROVED PLANS NOT AUTHORIZED BY THE ARCHITECT/ENGINEER AND/OR CLIENT/OWNER.
- DETAILS ARE INTENDED TO SHOW END RESULT OF DESIGN. ANY MODIFICATION TO SUIT FIELD DIMENSION AND CONDITION SHALL BE SUBMITTED TO THE ENGINEER FOR REVIEW AND APPROVAL PRIOR TO ANY WORK.
- BEFORE THE FINAL ACCEPTANCE OF THE PROJECT, THE CONTRACTOR SHALL REMOVE ALL EQUIPMENT AND MATERIALS, REPAIR OR REPLACE PRIVATE OR PUBLIC PROPERTY WHICH MAY HAVE BEEN DAMAGED OR DESTROYED DURING CONSTRUCTION, CLEAN THE AREAS WITHIN AND ADJACENT TO THE PROJECT WHICH HAVE BEEN OBSTRUCTED BY HIS/HER OPERATIONS, AND LEAVE THE PROJECT AREA NEAT AND PRESENTABLE.
- ALL SUBSURFACE UTILITY LINES SHOWN HEREON ARE BASED SOLELY ON THE FIELD LOCATION OF VISIBLE STRUCTURES, SHEDS, CEILING HYDRANTS, ETC. IN CONJUNCTION WITH DESIGN AND OR AS-BUILT PLANS SUPPLIED TO SEBAGO TECHINCS, INC. BY OTHERS. PRIOR TO ANY CONSTRUCTION, EXCAVATION, DRILLING, ETC. DIG SAFE MUST BE NOTIFIED AND A SITE IDENTIFICATION NUMBER ALONG WITH A SAFE TO DIG DATE OBTAINED. THE SITE CONTRACTOR SHALL BE RESPONSIBLE FOR FIELD VERIFYING THE LOCATION, DEPTH AND MATERIAL OF ALL SUBSURFACE UTILITY LINES SHOWN HEREON AND ANY AND ALL OTHERS LOCATED ON SITE WITHIN THE CONSTRUCTION AREA.



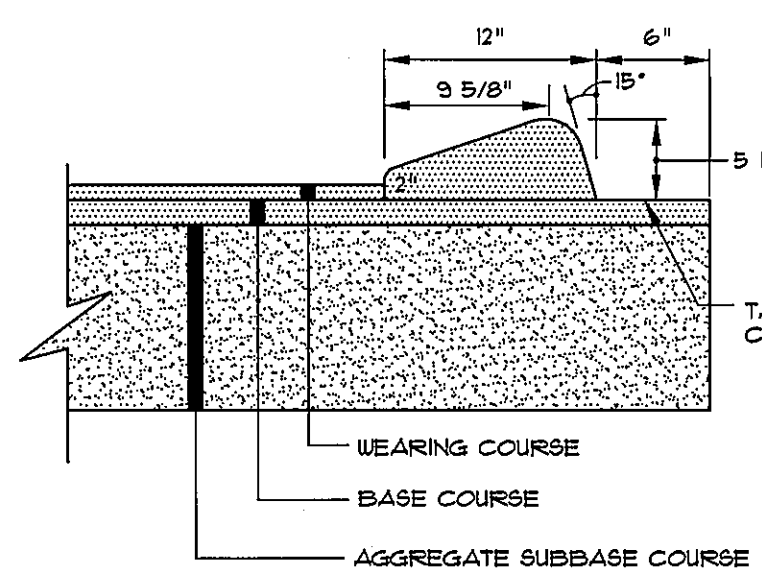
- NOTES:**
- CONCRETE f'c=5000 psi
 - REIN. STEEL GRADE #40 NEW BARS.
 - INSTALL BASE 3'-0" ABOVE FINISH GRADE IN LOCATIONS WHERE POLES ARE IN PARKING LOT PAVEMENT. ADJUST TOTAL HEIGHT OF BASE AS REQUIRED.
 - POLE BASE SHALL BE SUPERIOR CONCRETE MODEL LFB-RD CONCRETE LIGHT POLE BASE OR APPROVED EQUAL.

PRECAST CONCRETE LIGHT POLE BASE
NOT TO SCALE

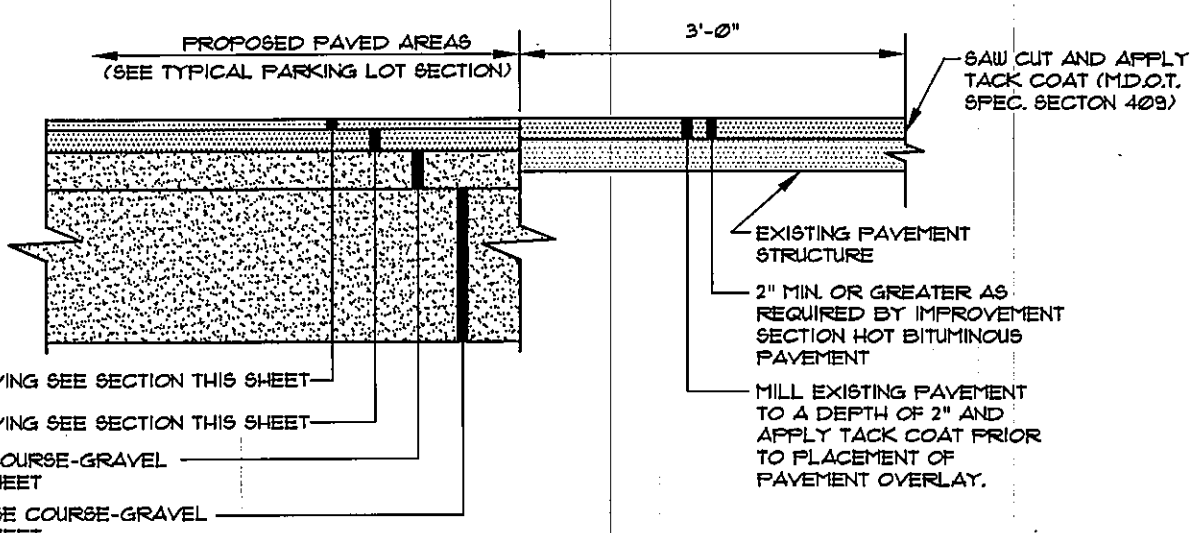


- NOTE:**
- COMPACT GRAVEL SUB-BASE, BASE COURSE TO 95% OF MAXIMUM DENSITY USING HEAVY ROLLER COMPACTOR.
 - CONTRACTOR SHALL SET GRADE STAKES MARKING SUB-BASE AND FINISH GRADE ELEVATIONS FOR CONSTRUCTION REFERENCE.

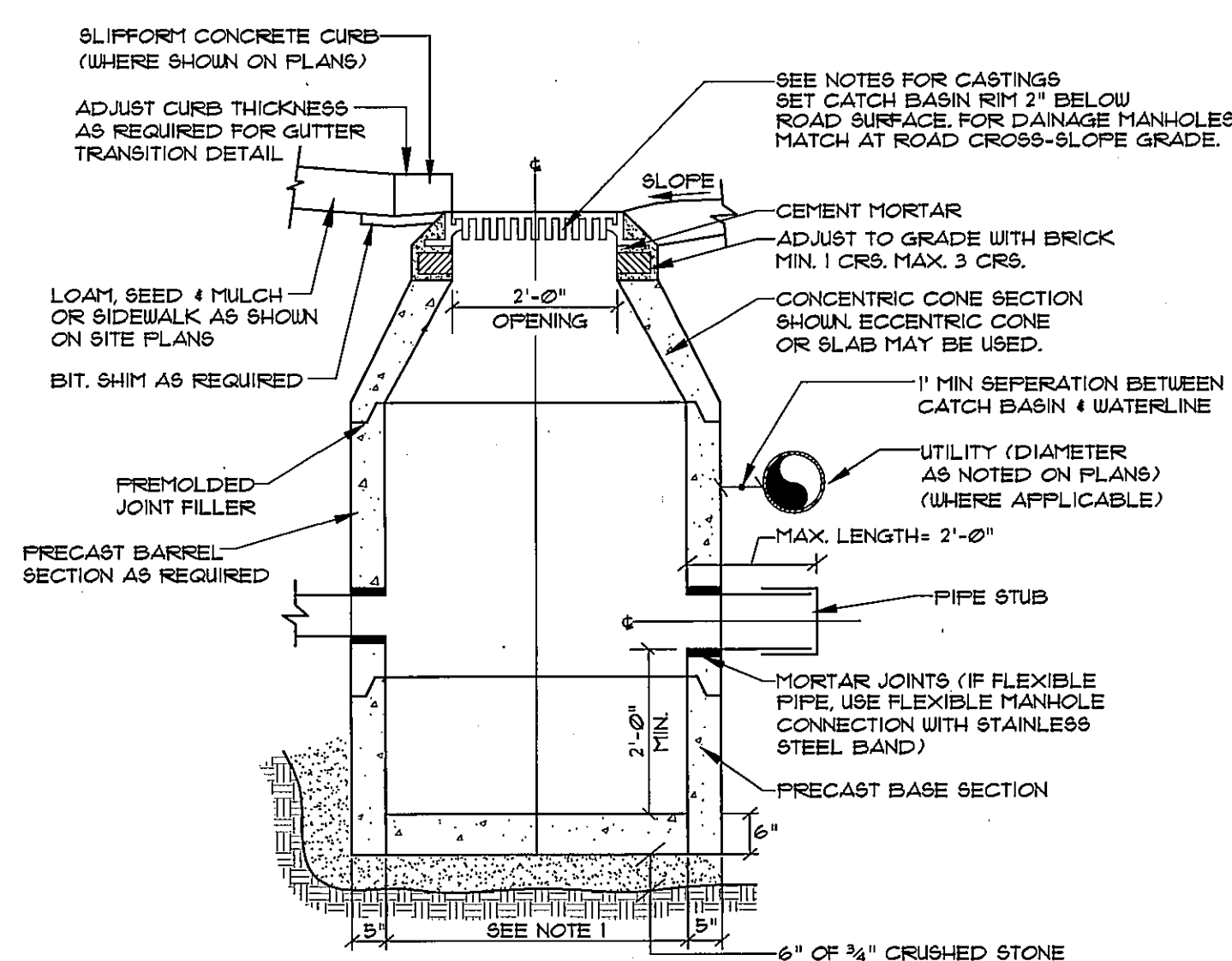
PARKING LOT SECTION
NOT TO SCALE



CAPE COD CURB
NOT TO SCALE

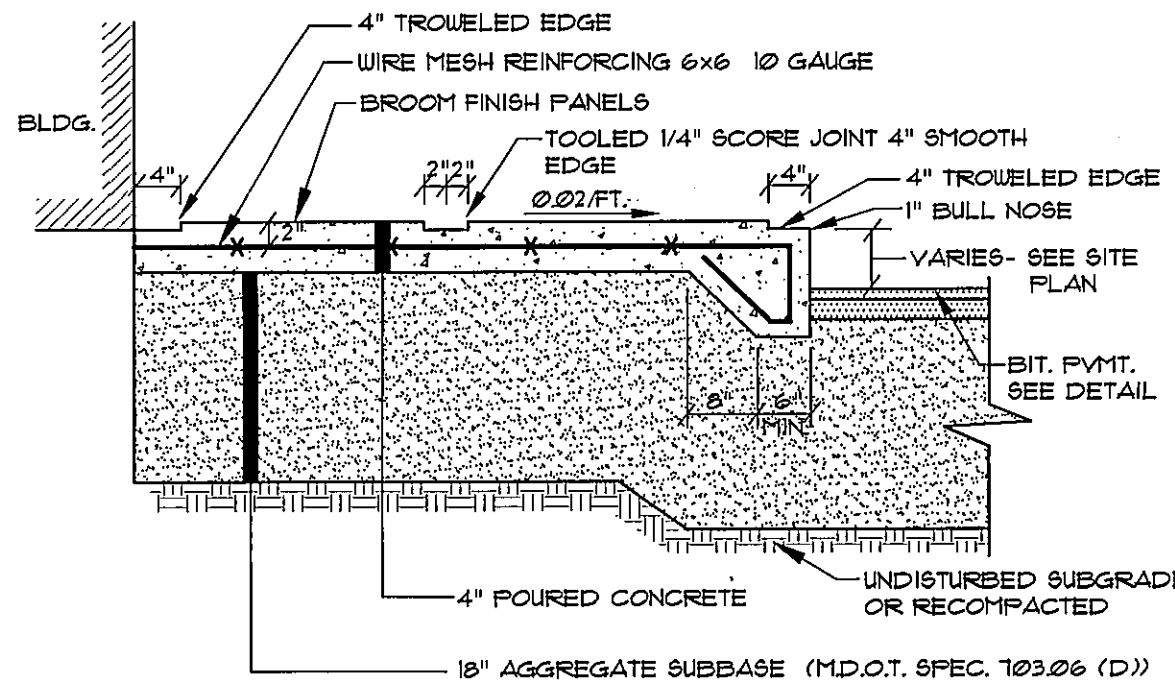


PAVEMENT SAW CUT DETAIL
NOT TO SCALE



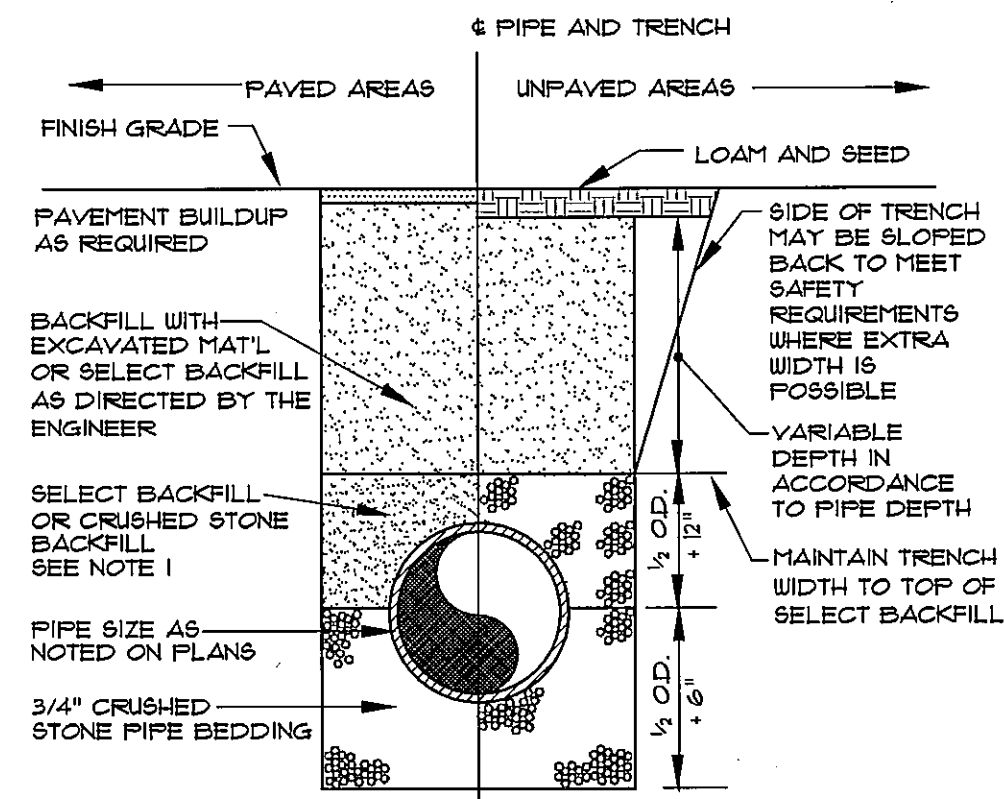
- NOTES:**
- 4'-0" I.D. TYPICAL. SOME STRUCTURES MAY REQUIRE LARGER I.D. PROVIDE SHOP DRAWINGS.
 - DRAINAGE STRUCTURES TO BE DESIGNED FOR H-20 LOADING.
 - PIPE SIZES AND INVERTS AS NOTED ON PLANS.
 - CATCH BASIN FRAME AND GRATE TO BE EAST JORDAN IRON WORKS MODEL #2300-3 OR APPROVED EQUAL.
 - DRAINAGE MANHOLE FRAME AND COVER TO BE EAST JORDAN IRON WORKS MODEL #3125 OR APPROVED EQUAL.
 - SUBMIT SHOP DRAWINGS FOR OWNERS/ENGINEERS REVIEW.

TYPICAL DRAINAGE STRUCTURE
NOT TO SCALE

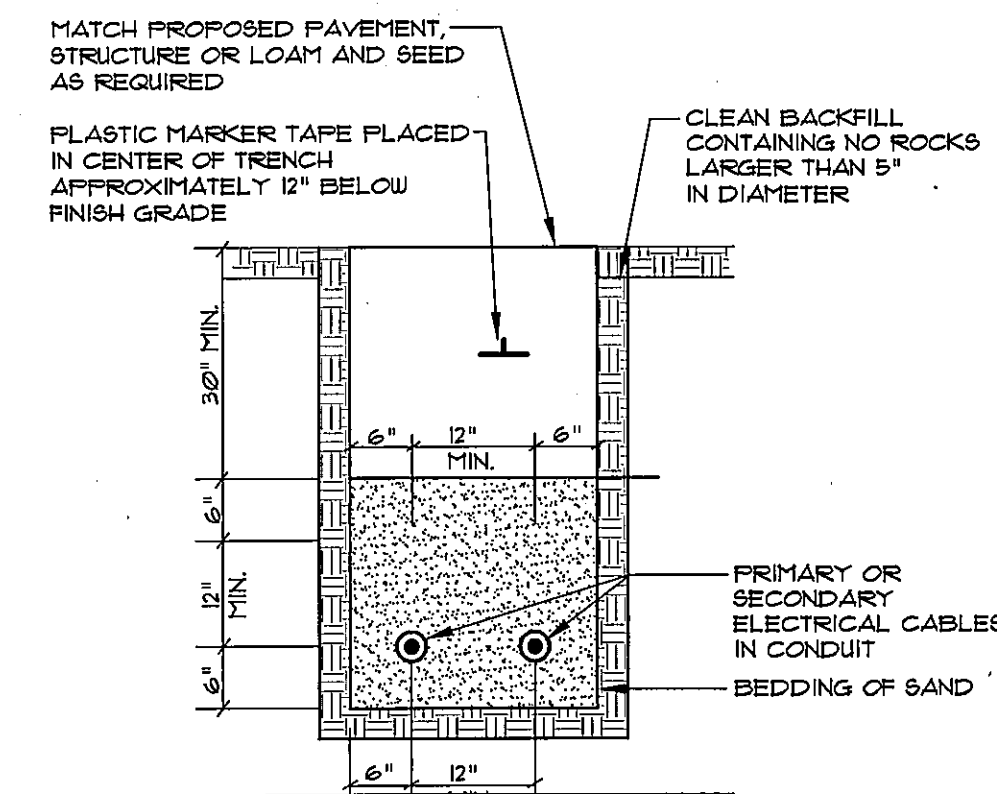


- NOTE:**
- INSTALL 5'-0" SQUARE AREA BY 4' DEEP OF FROST-FREE MATERIAL BELOW ALL HANDICAP RAMPS AND ENTRY POINTS AT BUILDING.

CONCRETE SIDEWALK
NOT TO SCALE

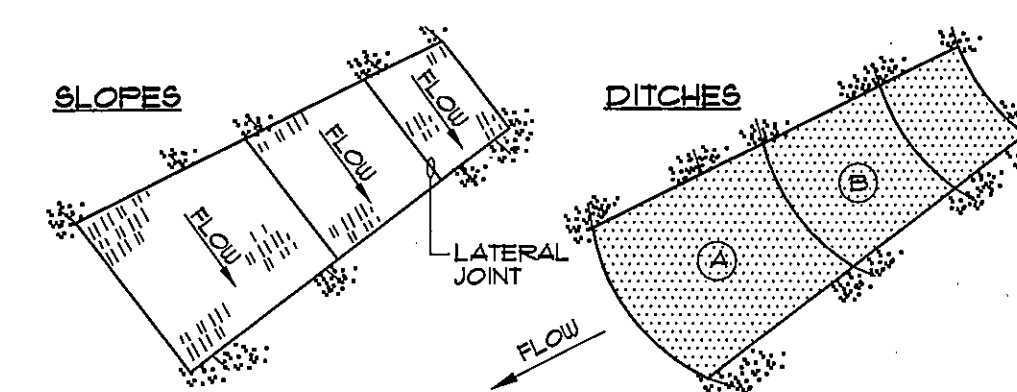


TYPICAL TRENCH SECTION
NOT TO SCALE



CABLES TO BE ENCASED IN SCHEDULE 40 PVC CONDUIT WHEN RUN BENEATH PAVED AREAS.

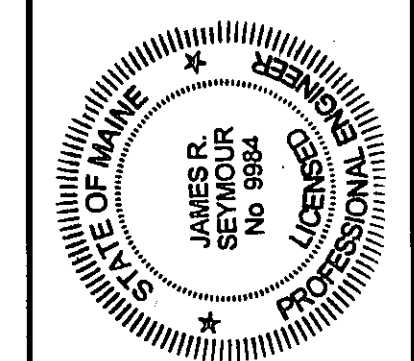
TYPICAL UNDERGROUND CABLE INSTALLATION
NOT TO SCALE



- NOTES:**
- BURY THE TOP END OF THE MESH MATERIAL IN A 6" TRENCH AND BACKFILL AND TAMP TRENCHING SECURE END WITH STAPLES AT 6" SPACING, 4" DOWN FROM EXPOSED END.
 - FLOW DIRECTION JOINTS TO HAVE UPPER END OF LOWER STRIP BURIED WITH UPPER LAYERS OVERLAPPED 4" AND STAPLED. OVERLAP B OVER A.
 - LATERAL JOINTS TO HAVE 4" OVERLAP OF STRIPS, STAPLED 18" ON CENTER.
 - STAPLE OUTSIDE LATERAL EDGE 2" ON CENTER.
 - WIRE STAPLES TO BE MIN. OF #11 WIRE 6" LONG AND 1-1/2" WIDE.

SLOPES	EROSION CONTROL BLANKET
3:1 OR SHALLOWER	NORTH AMERICAN GREEN D5 150
3:1 TO 2:1	NORTH AMERICAN GREEN 8C250
STEEPER THAN 2:1	SEE RIIRAP SIDE SLOPE DETAIL OR APPROVED EQUAL

EROSION CONTROL BLANKET
NOT TO SCALE



REV.	DATE	BY	STATUS	REVISION
B	07-30-2013	JRS	REVISED PER CITY REVIEW COMMENTS	
A	07-01-2013	JRS	ISSUED FOR CITY REVIEW	

SEBAGO TECHINCS
75 John Roberts Rd., Suite 1A
South Portland, ME 04086
Tel: 207-202-2100
Fax: 207-285-9569

PROJECT NO. 12406
FIELD BOOK N/A
DESIGN APP
CHECK APP
DRAWN JRS
APP APP

EVOLUTION ROCK & FITNESS, LLC.
65 WARREN AVENUE
PORTLAND, MAINE

FOR: EVOLUTION ROCK & FITNESS, LLC
P.O. BOX 22
CONCORD, NEW HAMPSHIRE 03302

DATE	SCALE
6-13-2013	1"=20'

SHEET 7 OF 8

12406D.dwg. TAB-D1