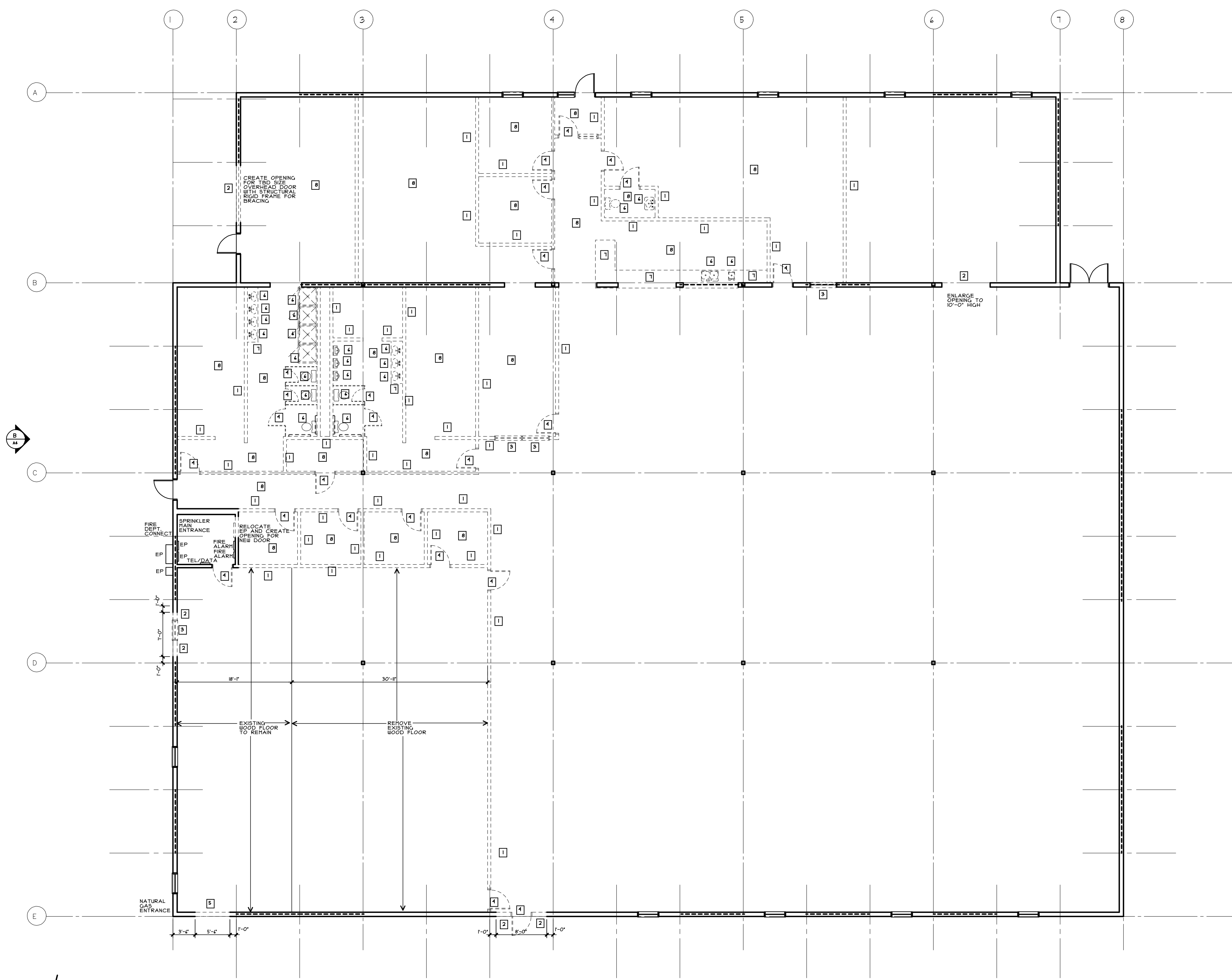


- DEMOLITION NOTES:**
- 1 REMOVE EXISTING WALL PARTITION FULL HEIGHT
 - 2 REMOVE EXISTING WALL AS REQ'D FOR NEW DOOR
 - 3 REMOVE EXISTING WINDOW, FRAME AND TRIM
 - 4 REMOVE EXISTING DOOR, FRAME AND TRIM
 - 5 REMOVE EXISTING WALL AS REQ'D FOR NEW WINDOW
 - 6 REMOVE EXISTING PLUMBING FIXTURE
 - 7 REMOVE EXISTING COUNTERS/CABINETS
 - 8 REMOVE ACOUSTIC TILE AND GRID
 - ALL LIGHT FIXTURES TO BE REMOVED/REPLACED



PARIS FARMERS UNION
 55 WARREN AVENUE
 PORTLAND, MAINE



93 Pitt Street
 Portland, ME 04103
 207.747-5975 voice

 822 Grover Hill Rd.
 Bethel, ME 04217
 207.824.7237 voice/fax
 info@smithreuter.com

DEMOLITION FLOOR PLAN

215-3

08/25/14

A1

DEMOLITION FLOOR PLAN
 1/8" = 1'-0"