

PARIS FARMERS UNION  
55 WARREN AVENUE  
PORTLAND, MAINE



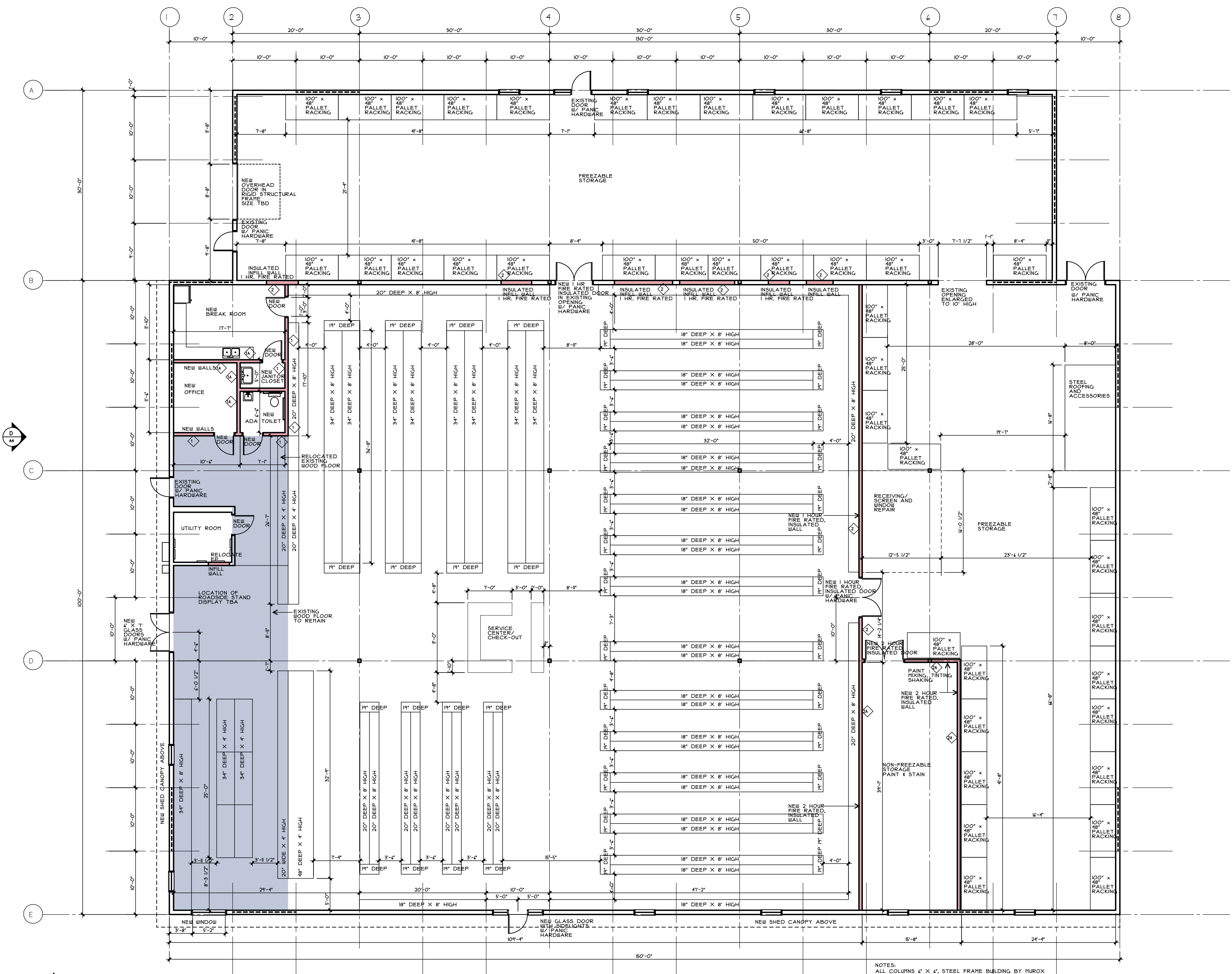
93 Pitt Street  
Portland, ME 04103  
207.747-5975 voice  
  
822 Grover Hill Rd.  
Bethel, ME 04217  
207.824.7237 voice/fax  
info@smithreuter.com

FIRST FLOOR PLAN

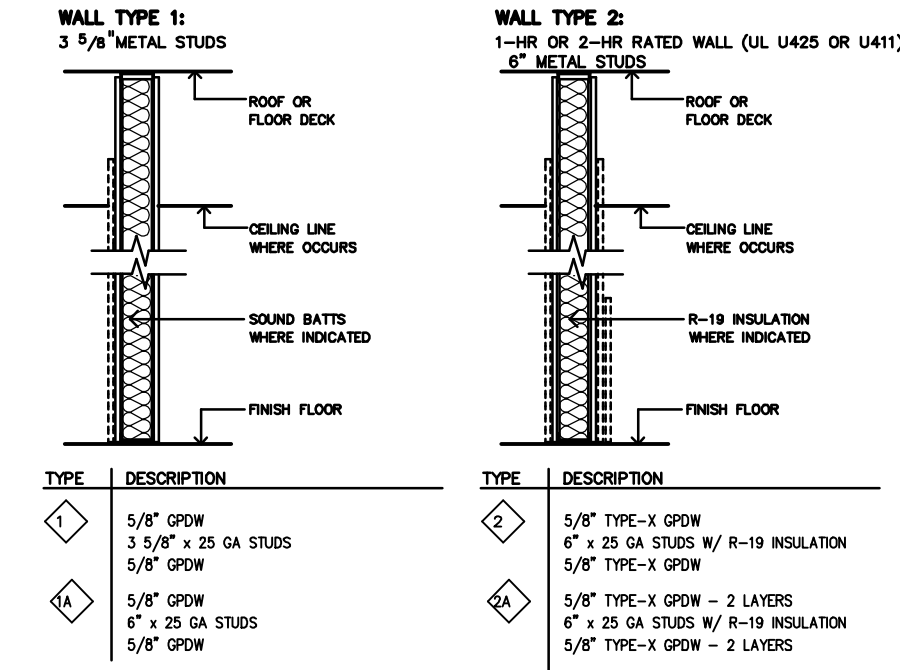
215-3

08/05/14

A2



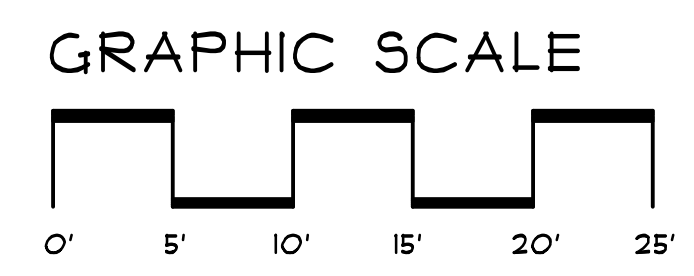
WALL TYPES:



Legend:

|  |                                  |
|--|----------------------------------|
|  | COMBINATION EXIT/EMERGENCY LIGHT |
|  | EMERGENCY LIGHT                  |
|  | HORN/STROKE                      |
|  | SMOKE DETECTOR                   |
|  | 3-A FIRE EXTINGUISHER            |

FIRST FLOOR PLAN  
1/8" = 1'-0"



NOTES:  
ALL COLUMNS 4' X 4' STEEL FRAME BUILDING BY MUOX.  
1033 SF OF MERCANTILE, 1 STORY BUILDING IS FULLY SPRINKLERED  
1335 SF STORAGE GROUP S - ORDINARY HAZARD 1 STORY BUILDING IS FULLY SPRINKLERED  
430 SF STORAGE - HAZARDOUS GROUP H FOR COMBUSTIBLE LIQUIDS CLASS II-A 1 STORY BUILDING IS FULLY SPRINKLERED  
  
MERCANTILE, GROUP H  
3000-3200 SQUARE FEET  
3 HOUR FIRE SEPARATION BETWEEN OTHER SPACES BECAUSE BUILDING IS FULLY SPRINKLERED  
ORDINARY HAZARD  
TRAVEL DISTANCE NOT MORE THAN 250' TO EXIT  
7 EXITS REQUIRED  
EXIT THROUGH STORAGE IS ALLOWED IF A 44" AISLE WITH FIXED BARRIERS IS CONTINUOUSLY MAINTAINED  
  
HAZARDOUS STORAGE, GROUP H  
430 SF STORAGE OF COMBUSTIBLE LIQUIDS CLASS II-A 1 STORY BUILDING IS FULLY SPRINKLERED  
2 HOUR FIRE SEPARATION BETWEEN OTHER SPACES BECAUSE BUILDING IS FULLY SPRINKLERED

