

HIGH TECH

FIRE PROTECTION

P.O. BOX 156
MANOT, ME 04258-0156
TEL (207) 998-2551 FAX (207) 998-4877



NAME LICENSE # 102
GENERAL CONTRACTOR ON RECORD
L & D BUILDERS 225-3543
PM: JIM DRESCOL

SPECIAL APPLICATIONS:

1. FIRE CALK WALL PENETRATION WHERE REQUIRED TO MEET BUILDING SPECIFIC RATINGS.
2. PITCH ALL DRY PIPE IN THE COLD STORAGE TOWARDS VALVE ROOM IN ACCORD. WITH NFPA 13.

LEGEND:

- NI PIPE RISER UP
- NI PIPE RISER DOWN
- ADDITIONAL DRINK
- WET SPRINKLER PIPE
- DRY SPRINKLER PIPE
- SYSTEM RISER
- PIPE PITCH & MANS J LINES
- ① HYDRAULIC CALC. POINT

DESIGN NOTES:

ALL PIPING 1/2" & LARGER TO BE SCHEDULE 40 UNLESS OTHERWISE NOTED. SCHEDULE 40 WITH APPROPRIATE FITTINGS TO BE SCHEDULE 40 POSITION, LOCATION, SPACING, AND USE OF SPRINKLER POSITION, LOCATION, SPACING, AND USE OF SPRINKLER POSITION, LOCATION, SPACING, AND USE OF HANGERS SHALL BE IN ACCORDANCE WITH NFPA 13.

HYDRAULIC CALCULATION PROCEDURES HAVE BEEN USED TO DETERMINE THE REQUIRED WATER SUPPLY CAPACITY AND FLOW RATE FOR THE SYSTEM. THE DESIGNER HAS REVIEWED THE BUILDING PLANS FOR LOCATION OF REMOTE AREAS, HYDRAULIC HEADS AND CONDITIONS OPEN FOR SPRINKLER HEADS AND PIPE MAY VARY TO ACCOMMODATE BUILDING AND CONDITIONS OPEN FOR SPRINKLER HEADS TO PREVENT WATER FILLED PIPING AND DAMAGE TO BUILDING STRUCTURE AND EQUIPMENT. ALL ELECTRICAL, MECHANICAL, AND PLUMBING SHALL BE IN ACCORDANCE WITH NFPA 13. SPRINKLER CONTRACTOR SHALL BE RESPONSIBLE FOR VERIFYING ALL ELECTRICAL WORK IS TO BE DONE BY OTHERS.

HEAD LEGEND:

- MODEL V2710
- MODEL V2708
- MODEL V2707
- MODEL V2706
- MODEL V2705
- MODEL V2704
- MODEL V2703
- MODEL V2702
- MODEL V2701

3/4" BRASS TECH UPRIGHT EXPOSED 4" x 4" x 18" NON-COMBUSTIBLE COLUMNS 16" X 16" SPACING IN UN-HEATED AREAS

1/2" BRASS HORIZONTAL SPINNALE EXPOSED UNDER GARAGE DOOR 100 SO.FLT. SPACING

408 APPROVED EQUALS

SCALE: 1/8"=1'-0"

TOTAL HEADS ON THIS SHEET: 82

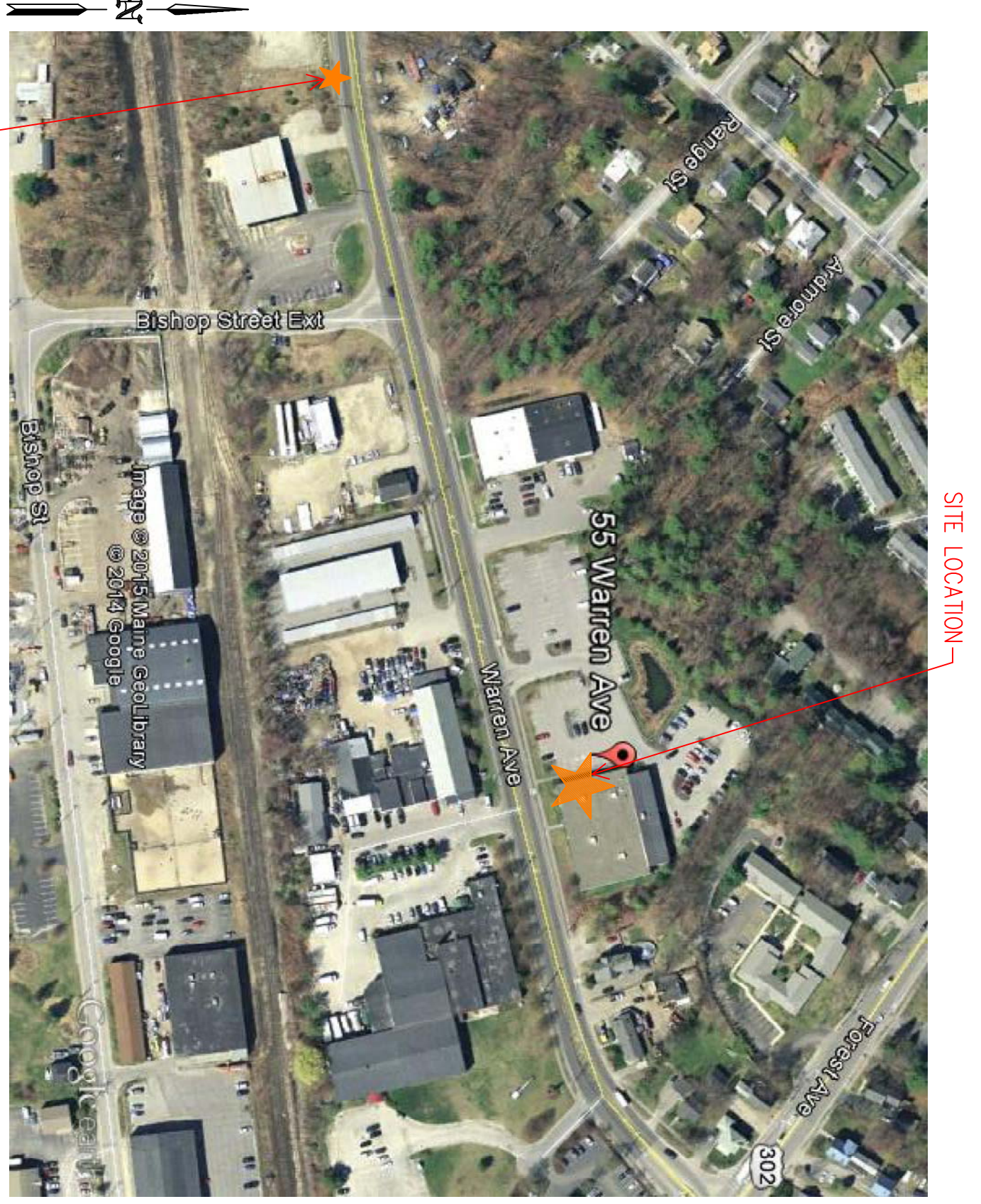
NO. DATE: DESCRIPTION:

DATE: FEBRUARY 3, 2015

DESIGNER: ED FOSLIN (RMS# 515)

LOCATION: 55 WARREN AVE PORTLAND, ME

DRAWING TITLE: PARIS FARMERS UNION STORE FIRE PROTECTION PLAN (NFA 13 2010ed.) DRAWING NO.: FP-01



1.3 PLOT PLAN
SCALE: N.T.S.

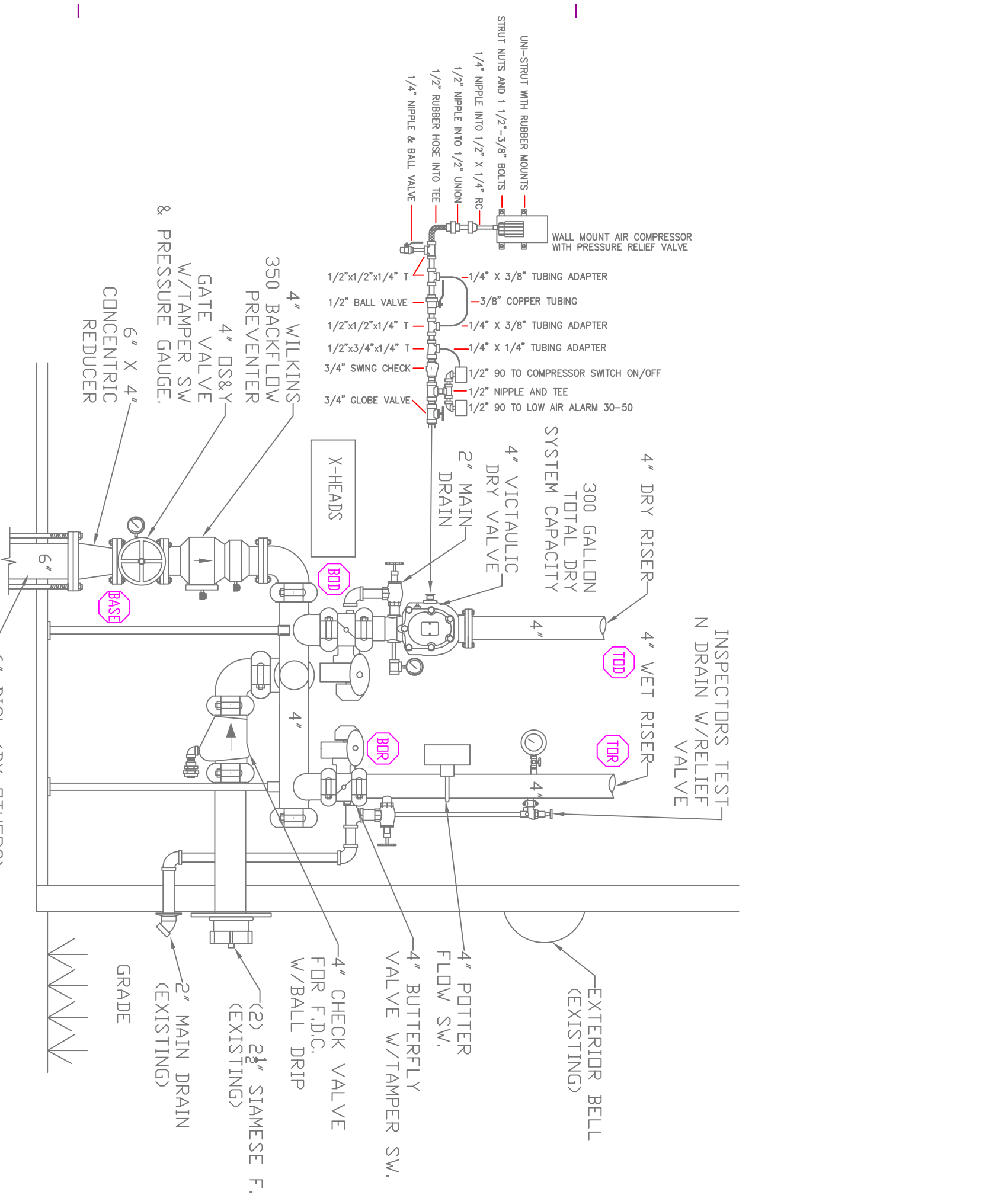
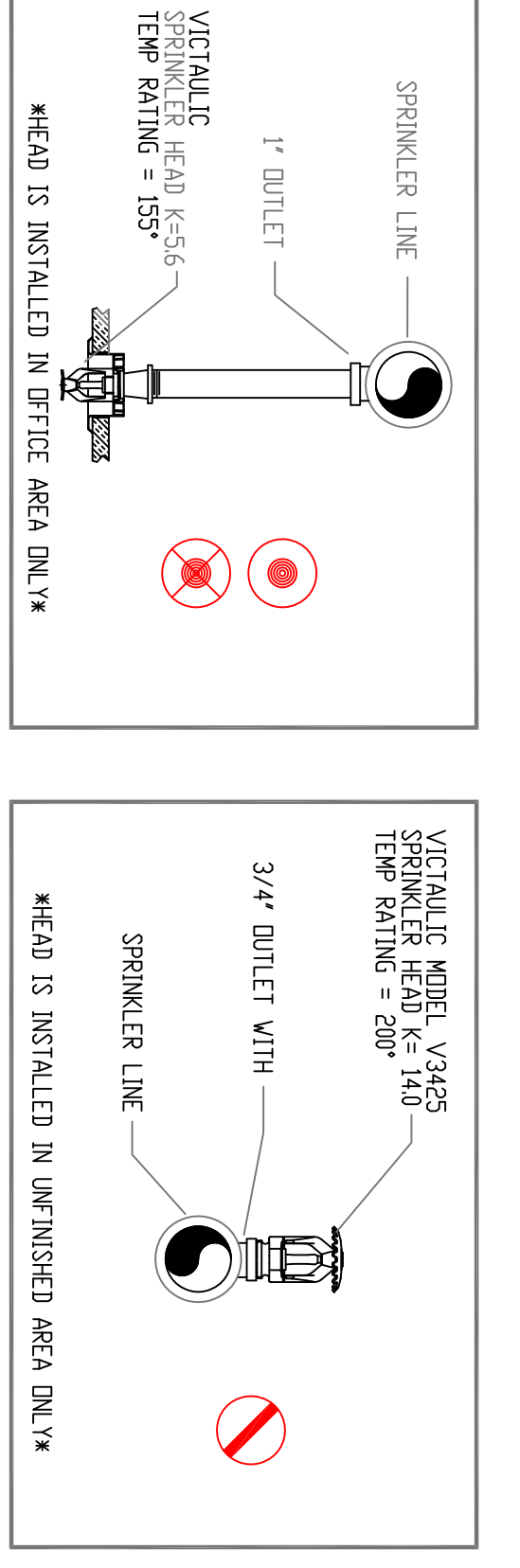
PROJECT DESCRIPTION

BUILDING CONST:
THE BUILDING IS A SINGLE LEVEL SLAB ON GRADE CONSTRUCTED OF STEEL FRAMING, FIBERGLASS INSULATION, AND GYP BOARD CONSTRUCTION. STEEL SPRINKLER PIPING THROUGHOUT.

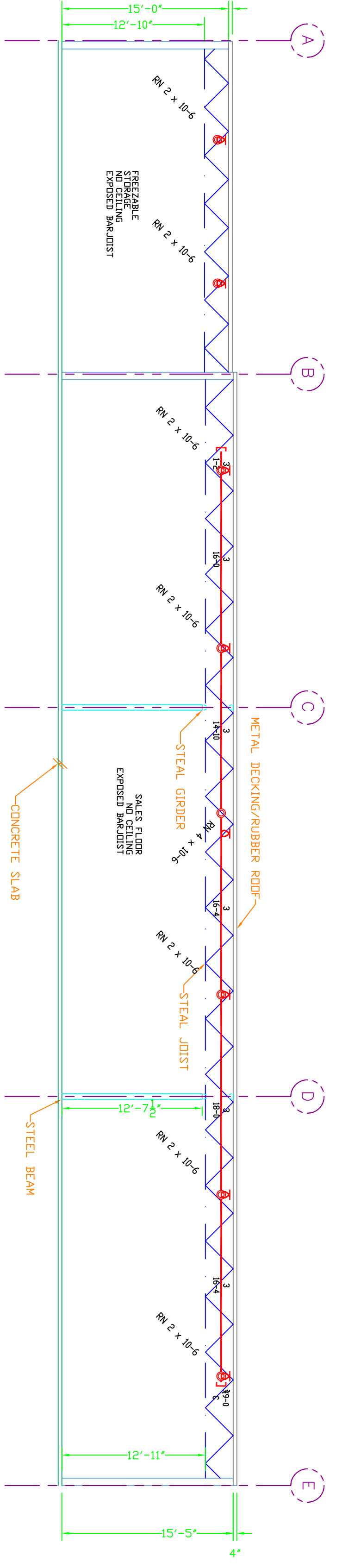
BUILDING OCCUPANCY:
CHANGE OF USE FROM A GM. TO MERCANTILE USAGE. RETAIL, COLD STORAGE, AND OFFICE SPACES.

SPRINKLER SYSTEM DESIGN:
THE HEATED SALES AREAS OF THE BUILDING ARE TO BE PROTECTED BY A DRY SPRINKLER SYSTEM. THE COLD STORAGE AREAS, SALES FLOOR AND STORAGE AREA ARE ORDINARY HAZARD GROUP 2 BATHROOMS OFFICES AND WAITING AREAS ARE LIGHT HAZARD.

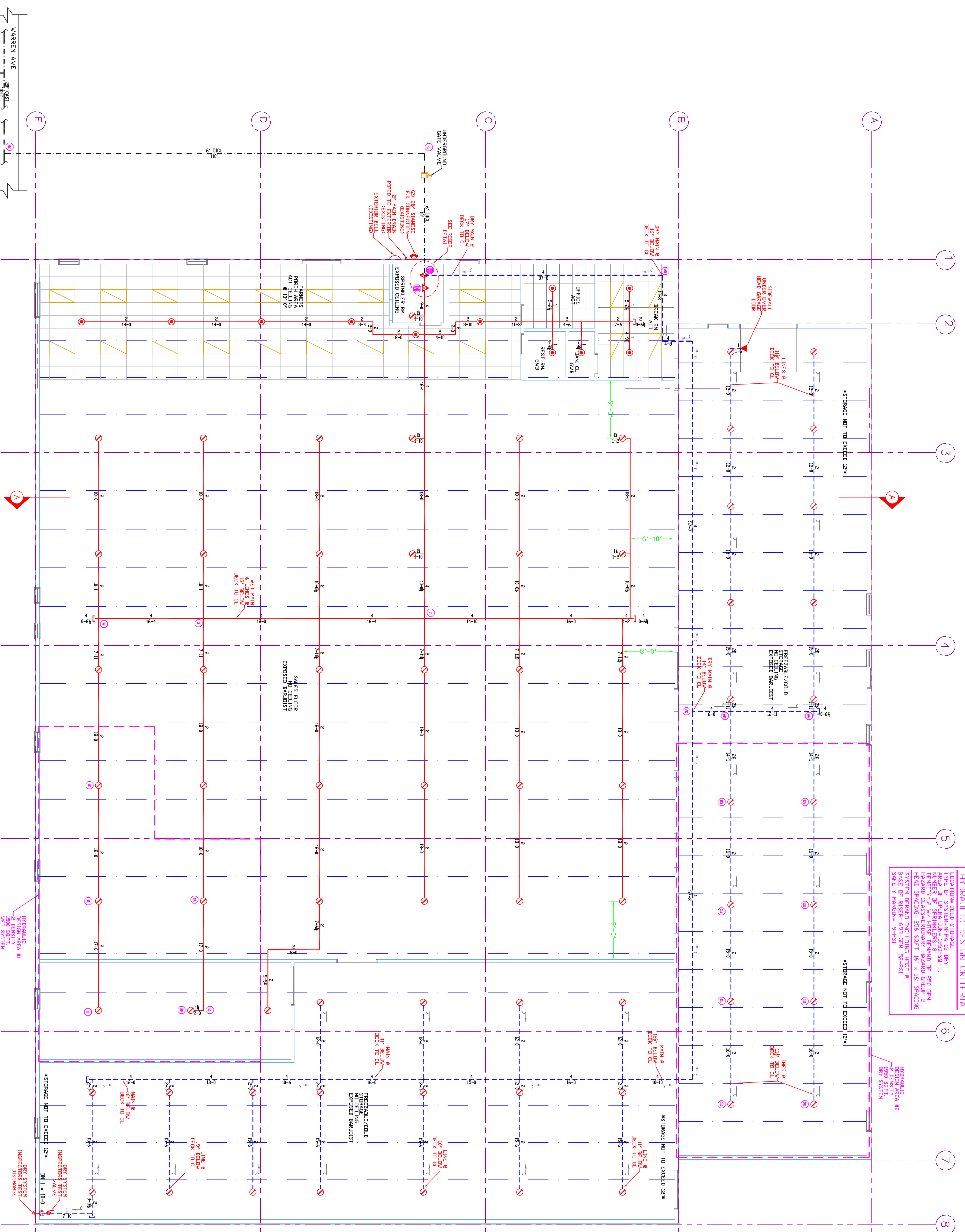
THE SPRINKLER SYSTEM WAS DESIGNED TO MEET APPLICABLE CODE REQUIRING NFPA 13 2010ED.



1.2 RISER DETAIL
SCALE: N.T.S.



1.1 SECTION A
SCALE: 1/8"=1'-0"



1 GROUND FLOOR
SCALE: 1/8"=1'-0"

DESIGN AREA NUMBER 1*
HYDRAULIC DESIGN CRITERIA
LOADING STATUS: 1500 SQ. FT.
DESIGNER: ED FOSLIN (RMS# 515)
DATE: FEBRUARY 3, 2015
LOCATION: 55 WARREN AVE PORTLAND, ME

DESIGN AREA NUMBER 2*
HYDRAULIC DESIGN CRITERIA
LOADING STATUS: 1500 SQ. FT.
DESIGNER: ED FOSLIN (RMS# 515)
DATE: FEBRUARY 3, 2015
LOCATION: 55 WARREN AVE PORTLAND, ME