

PARIS FARMERS UNION
55 WARREN AVENUE
PORTLAND, MAINE



SRL Architects
Bethel Portland

93 Pitt Street
Portland, ME 04103
207.747-5975 voice

822 Grover Hill Rd.
Bethel, ME 04217
207.824.7237 voice/fax
info@smithreuter.com

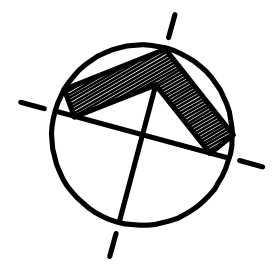
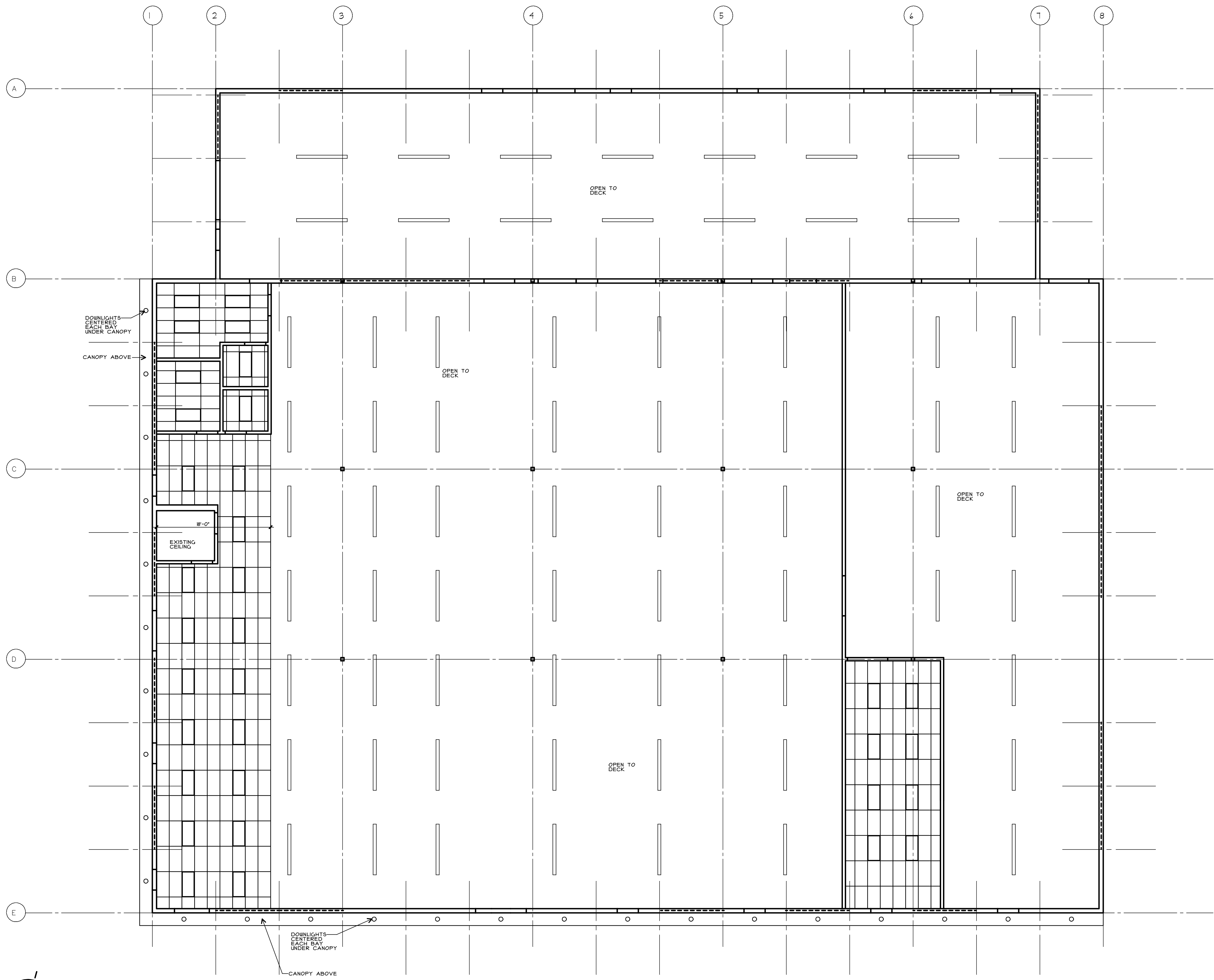
FIRST FLOOR
REFLECTED CEILING PLAN

215-3

09/11/14

A3

LEGEND	
	RECESSED 2X4 FLUORESCENT FIXTURE
	RECESSED IX4 FLUORESCENT FIXTURE
	SURFACE MOUNTED 2X4 FLUORESCENT FIXTURE
	SURFACE MOUNTED IX4 FLUORESCENT FIXTURE
	SURFACE MOUNTED IX8 FLUORESCENT FIXTURE
	RECESSED DOWNLIGHT
	SURFACE MOUNTED FIXTURE
	PENDANT FIXTURE



REFLECTED CEILING PLAN
1/8" = 1'-0"