

PARIS FARMERS UNION
55 WARREN AVENUE
PORTLAND, MAINE

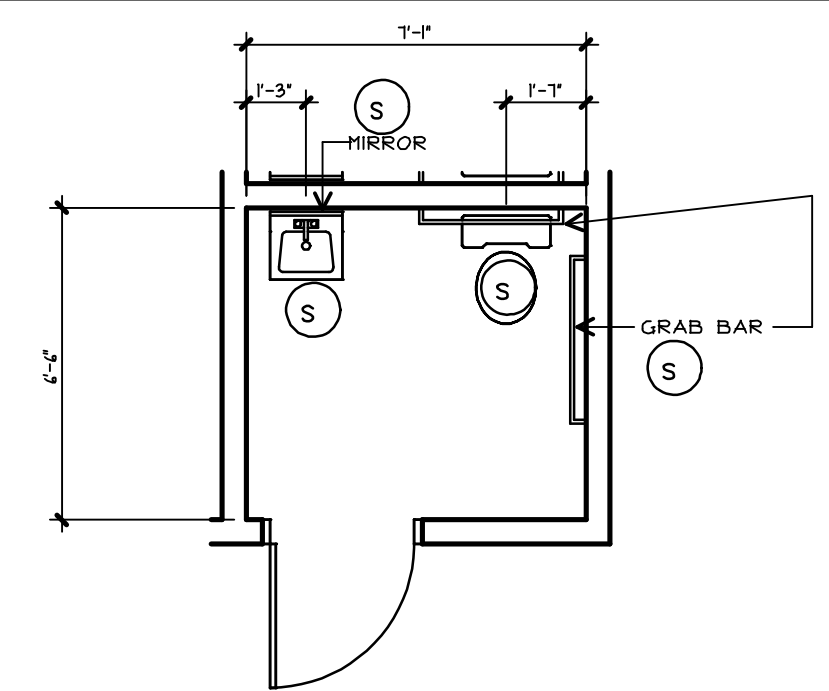


Bethel Portland

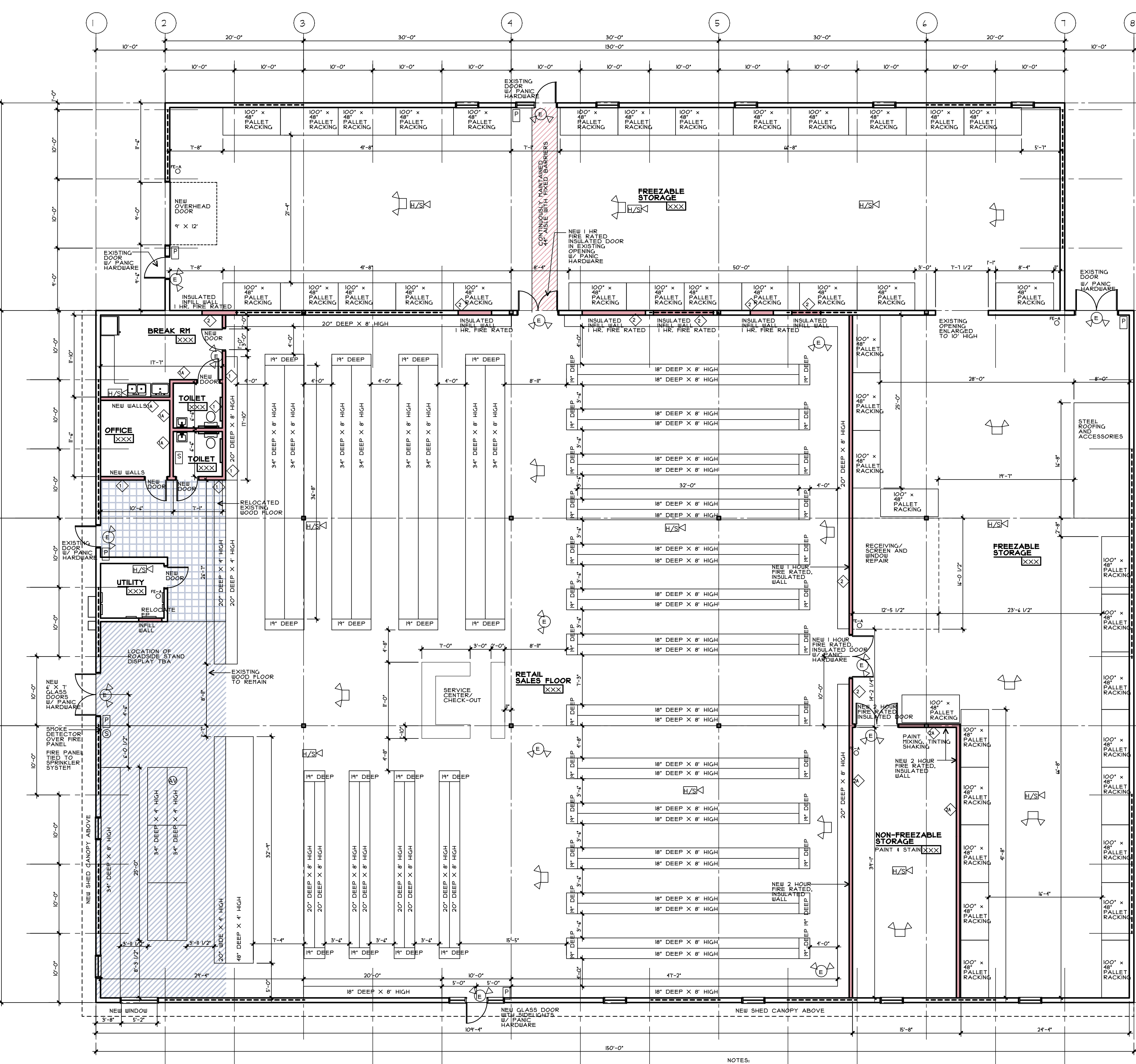
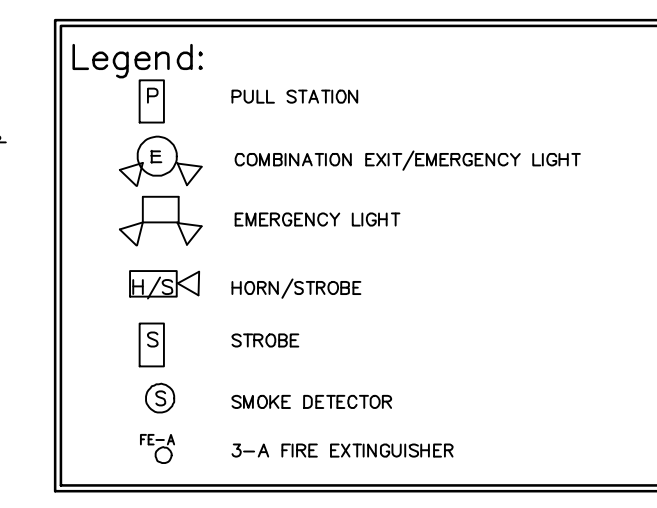
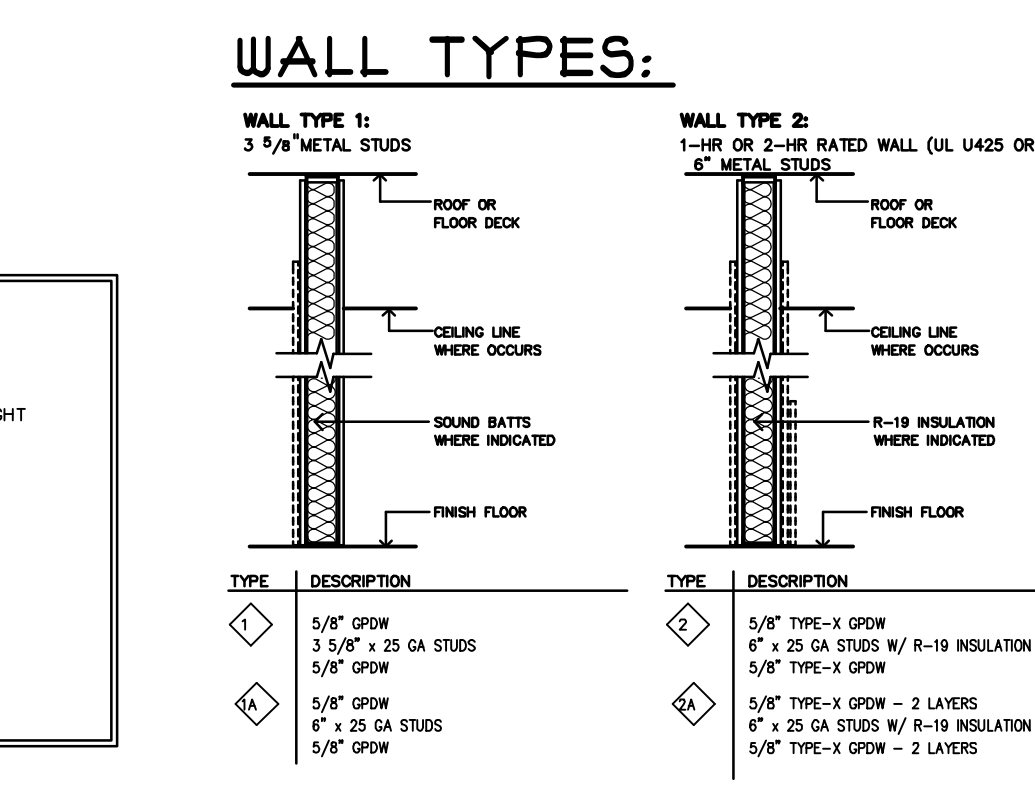
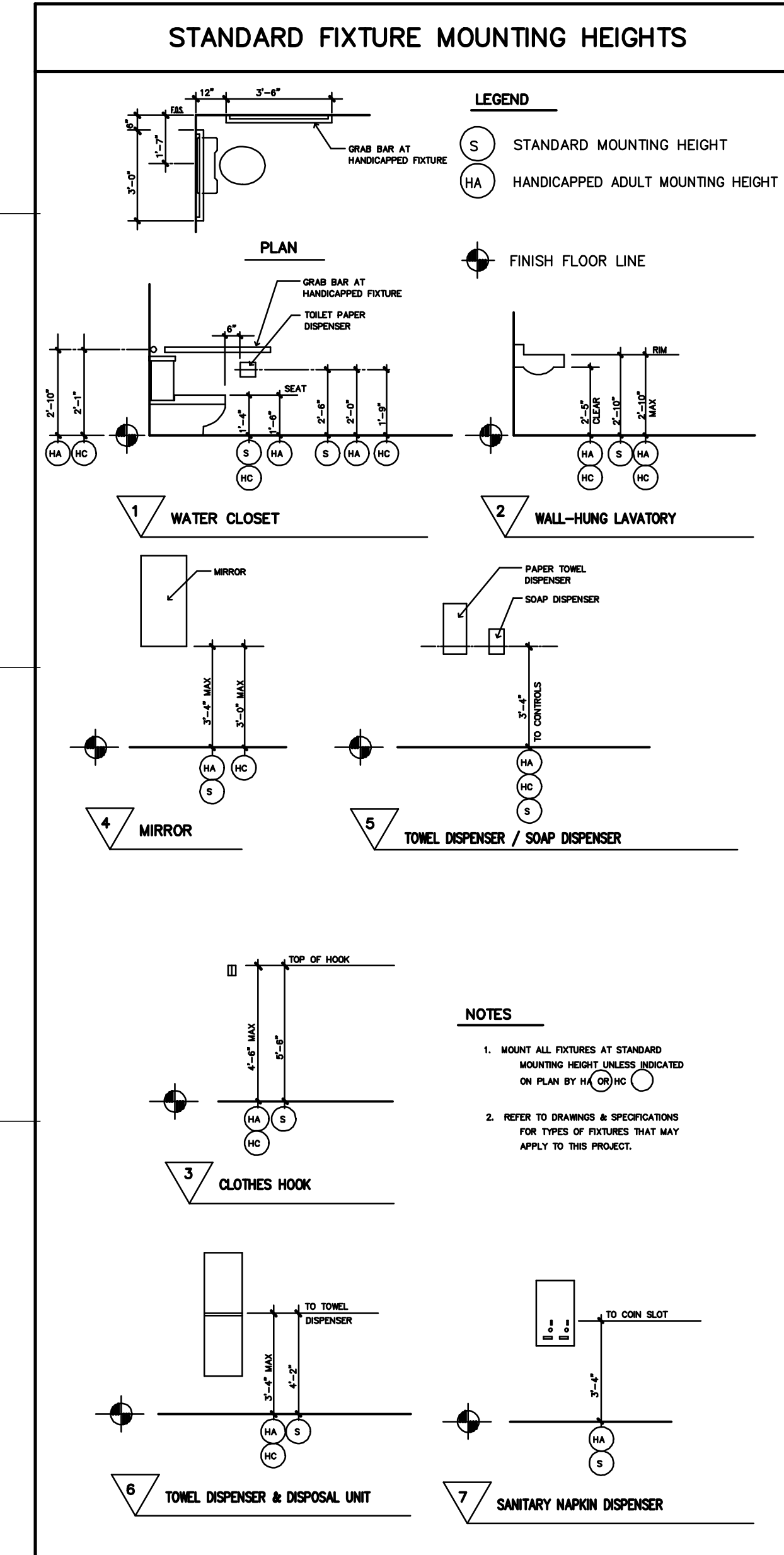
93 Pitt Street
Portland, ME 04103
207.747-5975 voice
822 Grover Hill Rd.
Bethel, ME 04217
207.824.7237 voice/fax
info@smithreuter.com

FIRST FLOOR PLAN

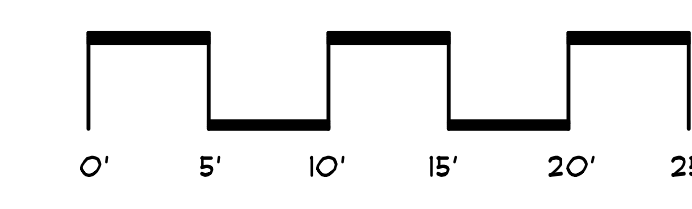
215-3
A2
09/11/14



ENLARGED TOILET PLAN
1/4" = 1'-0"



FIRST FLOOR PLAN
1/8" = 1'-0"



NOTES:
ALL COLUMNS 4" X 4" STEEL FRAME BUILDING BY MUOX.
10,330 SF OF PERCENTILE, 1 STORY BUILDING IS FULLY SPRINKLERED
1335 SF STORAGE GROUP S - ORDINARY HAZARDOUS 1 STORY BUILDING IS FULLY SPRINKLERED
430 SF STORAGE - HAZARDOUS GROUP H FOR COMBUSTIBLE LIQUIDS CLASS III-A 1 STORY BUILDING IS FULLY SPRINKLERED
MERCANTILE GROUP H
3,000-30,000 SQUARE FEET
1 HOUR FIRE SEPARATION BETWEEN OTHER SPACES BECAUSE BUILDING IS FULLY SPRINKLERED
ORDINARY HAZARDOUS
TRAVEL DISTANCE NOT MORE THAN 250' TO EXIT
2 EXITS REQUIRED
EXIT THROUGH STORAGE IS ALLOWED IF A 44" AISLE WITH FIXED BARRIERS IS CONTINUOUSLY MAINTAINED
HAZARDOUS STORAGE, GROUP H
430 SF STORAGE OF COMBUSTIBLE LIQUIDS CLASS III-A 1 STORY BUILDING IS FULLY SPRINKLERED
2 HOUR FIRE SEPARATION BETWEEN OTHER SPACES BECAUSE BUILDING IS FULLY SPRINKLERED