

- DEMOLITION NOTES:**
- 1 REMOVE EXISTING WALL PARTITION FULL HEIGHT
  - 2 REMOVE EXISTING WALL AS REQ'D FOR NEW DOOR
  - 3 REMOVE EXISTING WINDOW, FRAME AND TRIM
  - 4 REMOVE EXISTING DOOR, FRAME AND TRIM
  - 5 REMOVE EXISTING WALL AS REQ'D FOR NEW WINDOW
  - 6 REMOVE EXISTING PLUMBING FIXTURE
  - 7 REMOVE EXISTING COUNTERS/CABINETS
  - 8 REMOVE ACOUSTIC TILE AND GRID
  - ALL LIGHT FIXTURES TO BE REMOVED/REPLACED



**PARIS FARMERS UNION**  
55 WARREN AVENUE  
PORTLAND, MAINE



93 Pitt Street  
Portland, ME 04103  
207.747-5975 voice

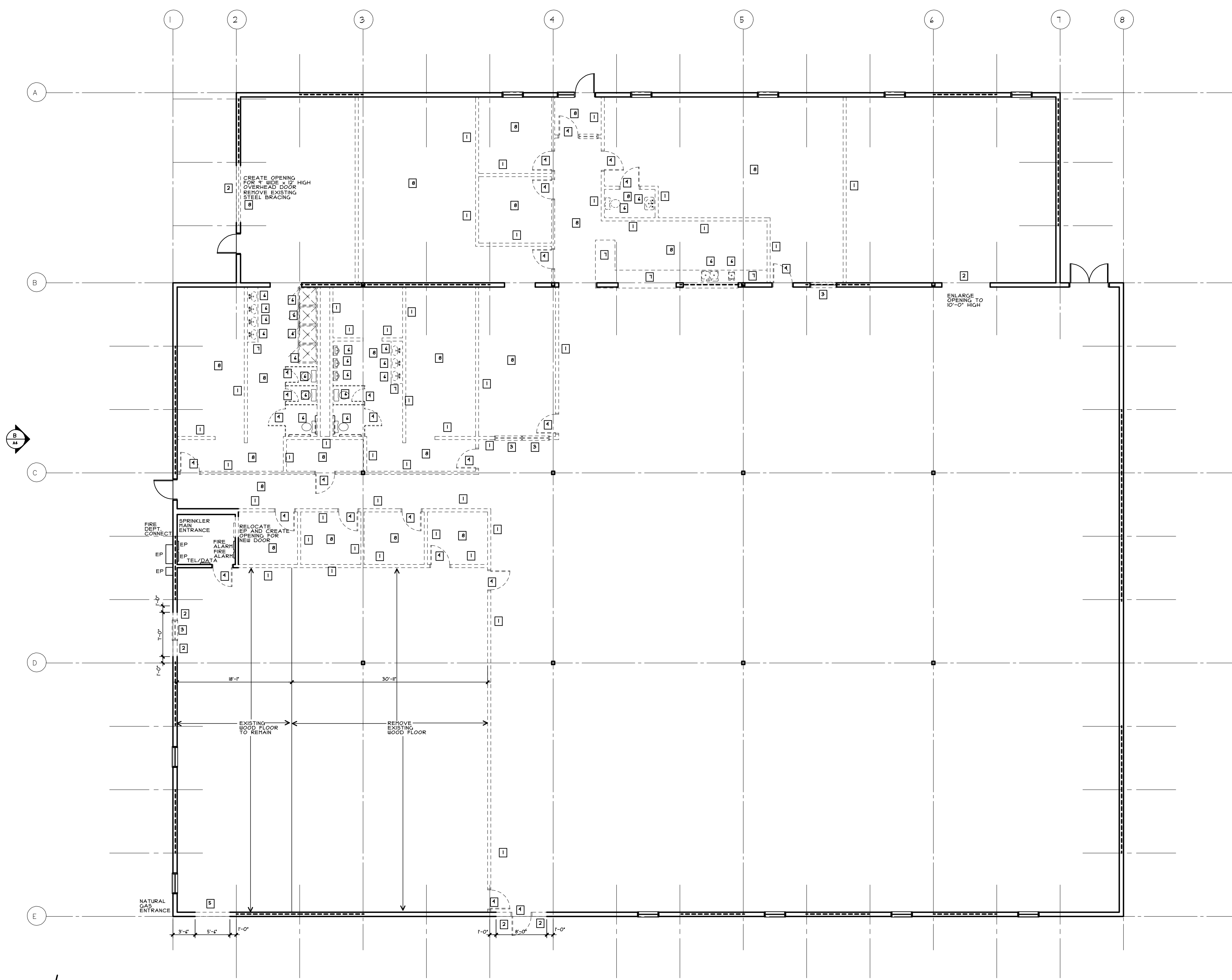
822 Grover Hill Rd.  
Bethel, ME 04217  
207.824.7237 voice/fax  
info@smithreuter.com

DEMOLITION FLOOR PLAN

215-3

09/11/14

A1



**DEMOLITION FLOOR PLAN**  
1/8" = 1'-0"