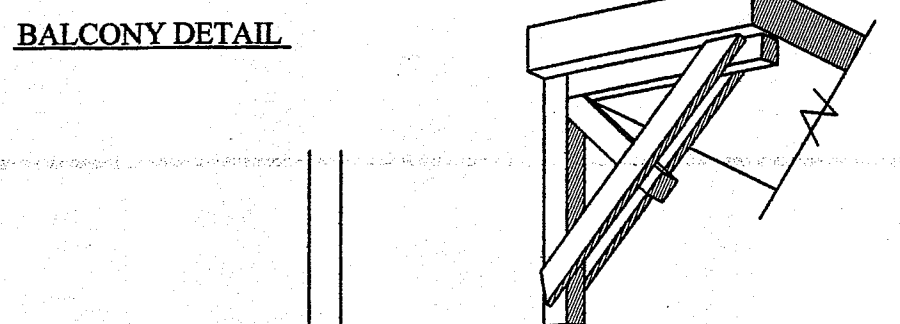
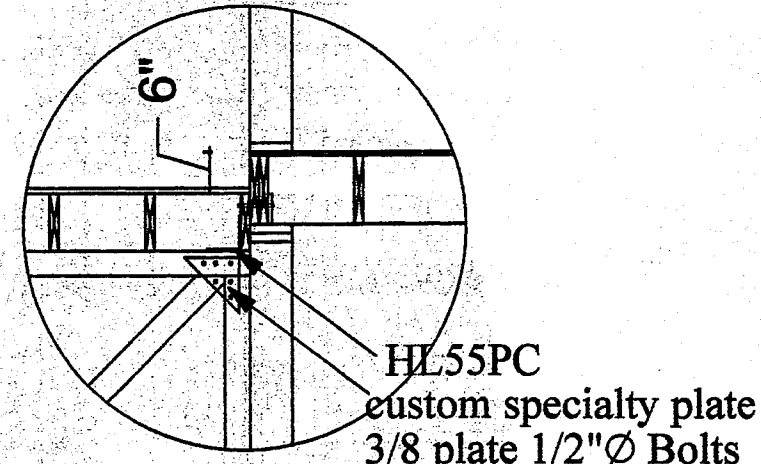


**SECOND FLOOR FRAMING**



**BALCONY DETAIL**  
 4X4 PT SUPPORT  
 See Detail  
 DOUBLE STUD AT BRACKETS  
 2X6 PT EACH SIDE OF 4X4



HL55PC  
 custom specialty plate  
 3/8 plate 1/2"Ø Bolts

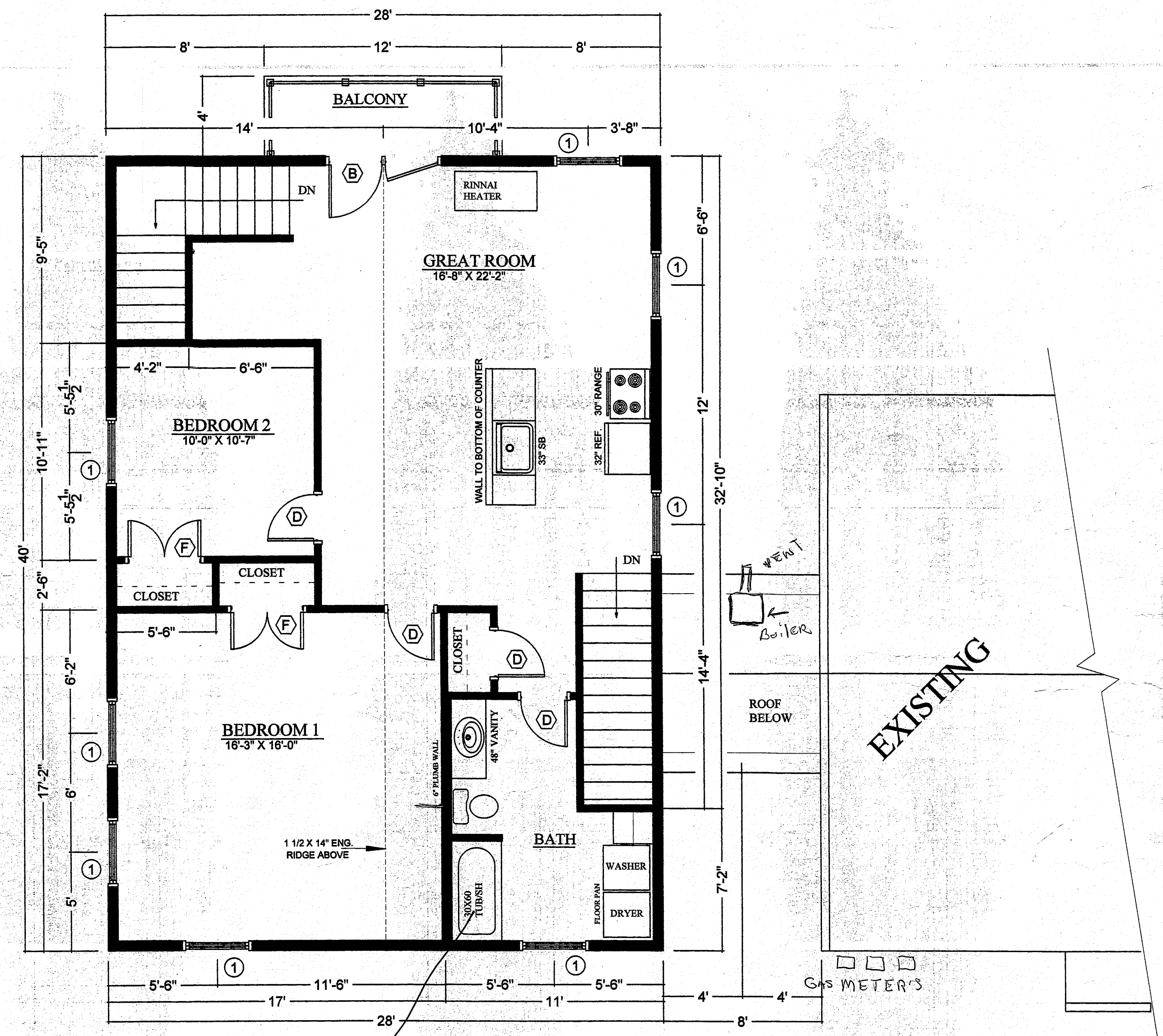
2X4 COLLAR TIES 16" O.C.  
 SPACING FROM HERE

⊙ TRIPLE JOIST  
 ⊙ DOUBLE JOIST

WALL BELOW

(2) 2X12 RIM JOIST TYPICAL

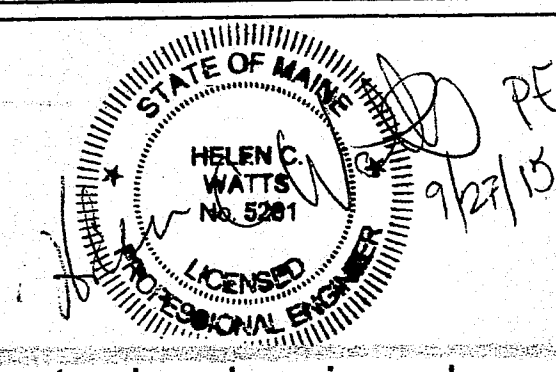
2X12 JOISTS 16" O.C.  
 SPACING FROM HERE  
 JOIST HANGERS TYPICAL  
 AT INTERSECTION/ BEAM



**SECOND FLOOR PLAN**

1,120 SQUARE FEET - LIVING SPACE

*Tim*  
 \*  
 WALK IN SHOWER

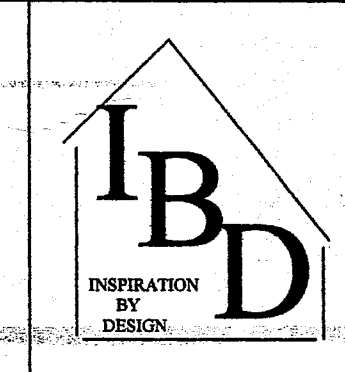


HELEN C. WATTS, PE, SECB  
 HELEN WATTS ENGINEERING PLLC  
 455 LITCHFIELD ROAD  
 BOWDOIN, ME 04287  
 (207) 522-9366 ; fax (207) 666-3920  
 howatts@gwi.net http://helenwattsengineering07.tripod.com

**GENERAL ARCHITECTURAL NOTES:**

1. ALL WORK IS TO MEET OR EXCEED ALL PERTINENT FEDERAL, STATE & LOCAL CODES.
2. ALL DIMENSIONS SHALL BE VERIFIED IN THE FIELD, AND ANY DISCREPANCIES ARE TO BE REPORTED TO THE DESIGNER FOR RESOLUTION PRIOR TO CONSTRUCTION.
3. UNLESS OTHERWISE NOTED, DETAILS SHOWN ARE TO BE CONSIDERED TYPICAL FOR SIMILAR CONDITIONS.
4. ANY CHANGES OR MODIFICATIONS TO THESE PLANS MUST BE APPROVED IN WRITING BY THE OWNERS & CONTRACTOR PRIOR TO CONSTRUCTION.

Customer Name: PIEROBELLO RESIDENCE	
Scale: 1/4" = 1'-0"	Approved As Noted: _____
Date: 09/12/15	Revision: _____
Drawing Number: A3	



Stamp is for structural engineering only