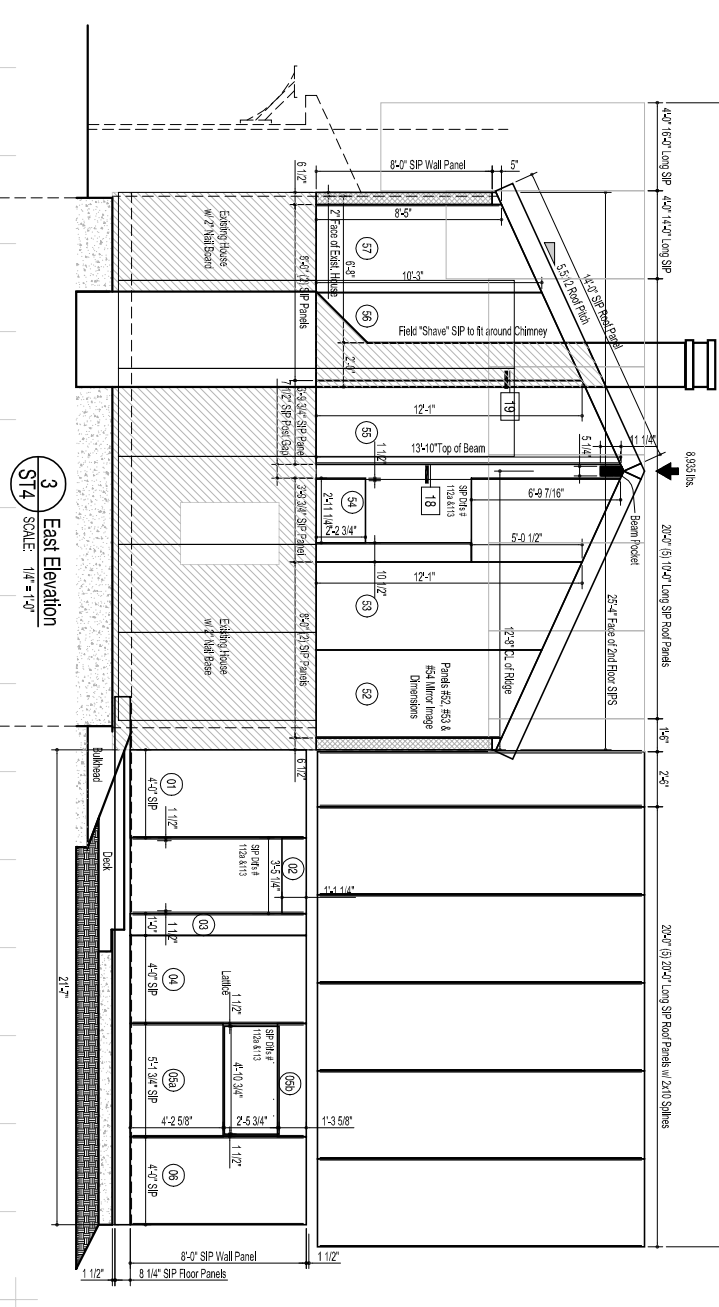
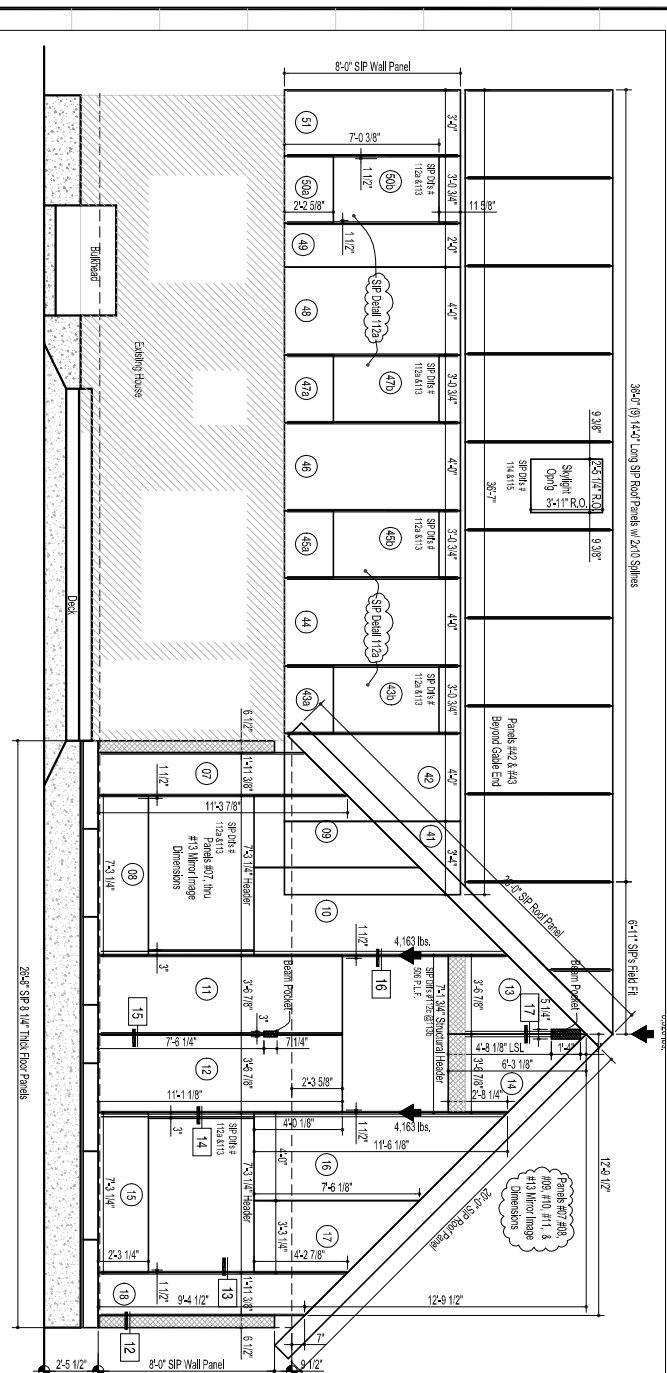


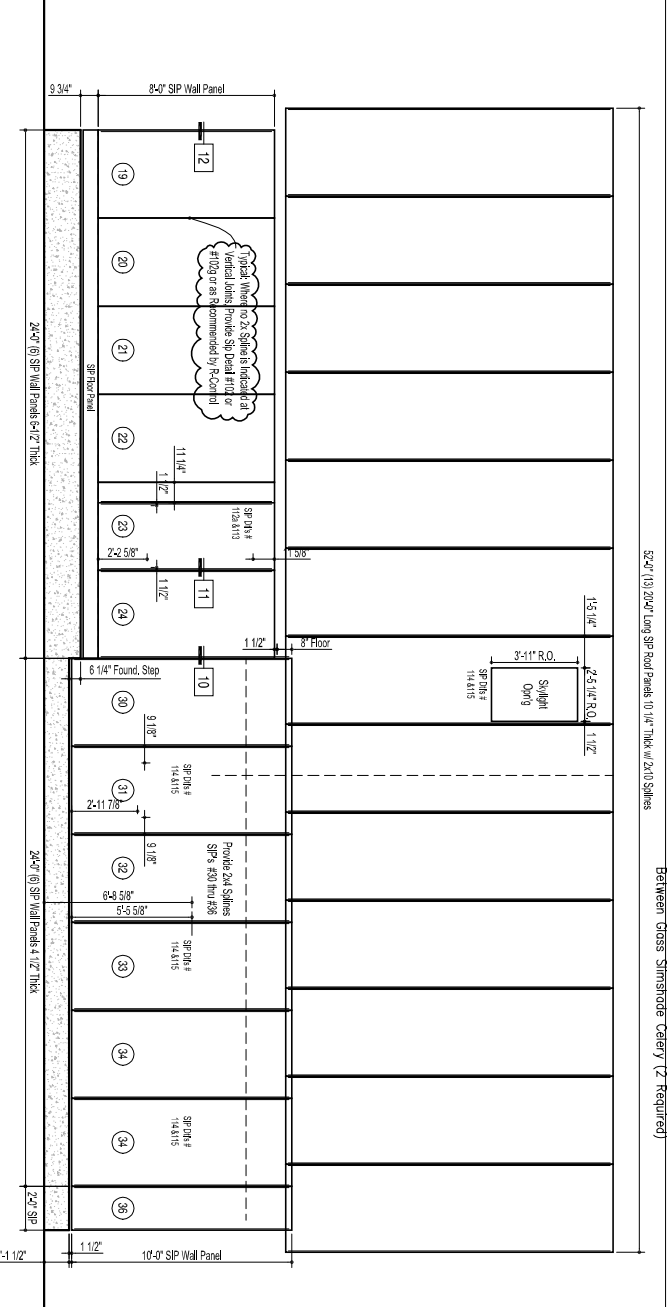
1 North Elevation  
ST4 SCALE: 1/4" = 1'-0"



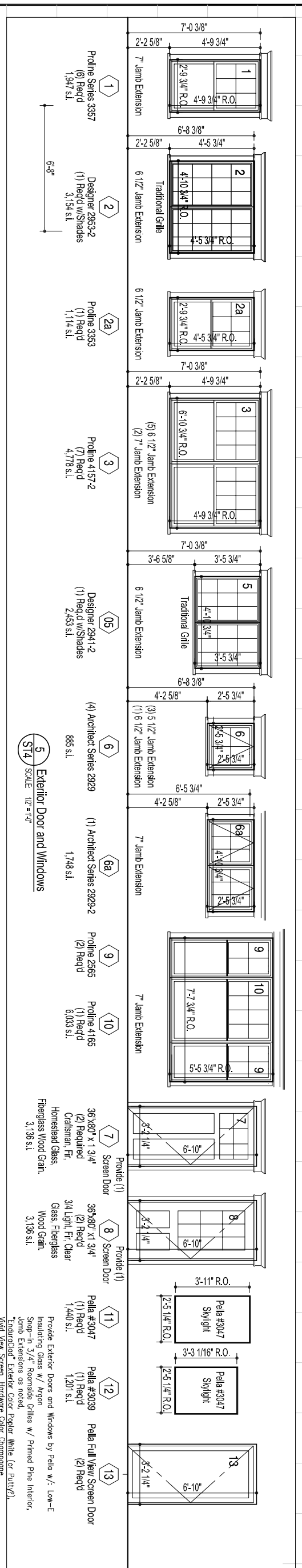
4 South Elevation  
ST4 SCALE: 1/4" = 1'-0"



2 West Elevation  
ST4 SCALE: 1/4" = 1'-0"



3 East Elevation  
ST4 SCALE: 1/4" = 1'-0"



**ST4**  
sheet number

issued:

project no.

**CONSTRUCTION SET**

Blackwell Residence  
361 Ludlow Street, Portland ME

Structural Insulation w/ALL Panel Elevations  
and Exterior Opening Types

revision #/ date	Revision Reason

date: 07-27-28      drawn by: 1/4" = 1'-0"

**Efficient Sustainable Shelter**

361 Ludlow Street, Portland ME 04102

**Clyde Blackwell Architect**

Tel: (207) 871-9904