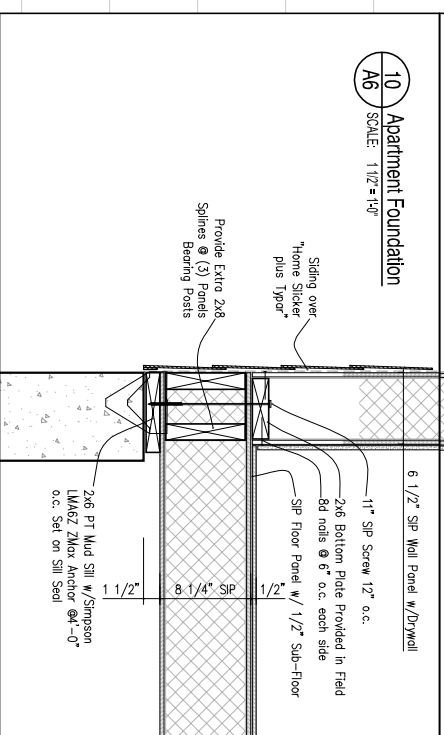


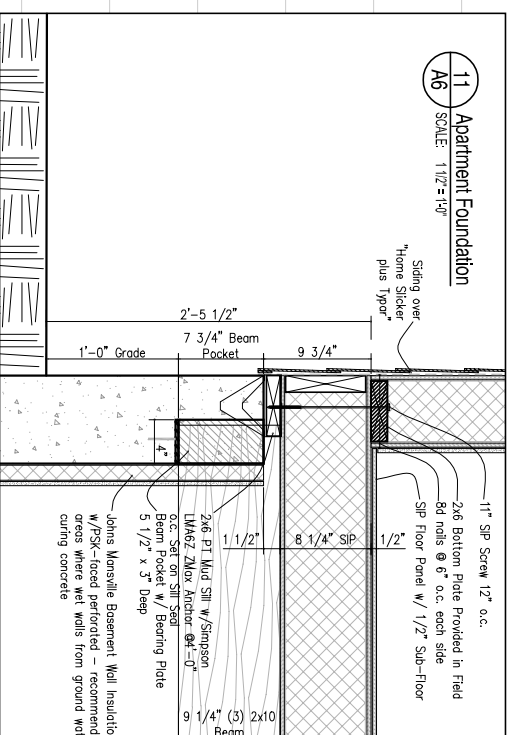
**8** Apartment Eave  
SCALE: 1 1/2" = 1'-0"



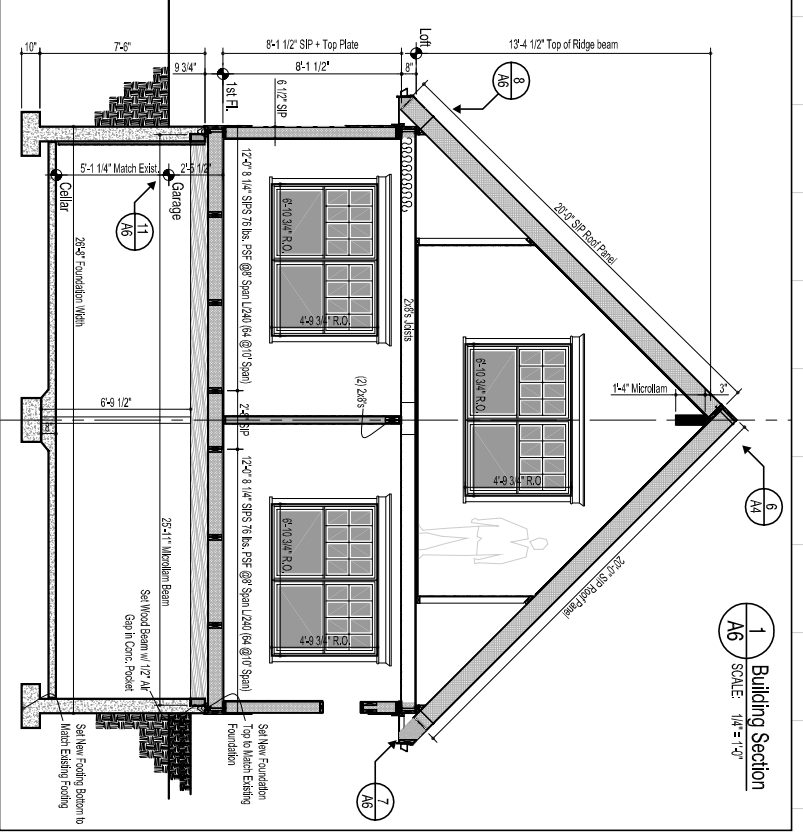
**9** Apartment Foundation  
SCALE: 1 1/2" = 1'-0"



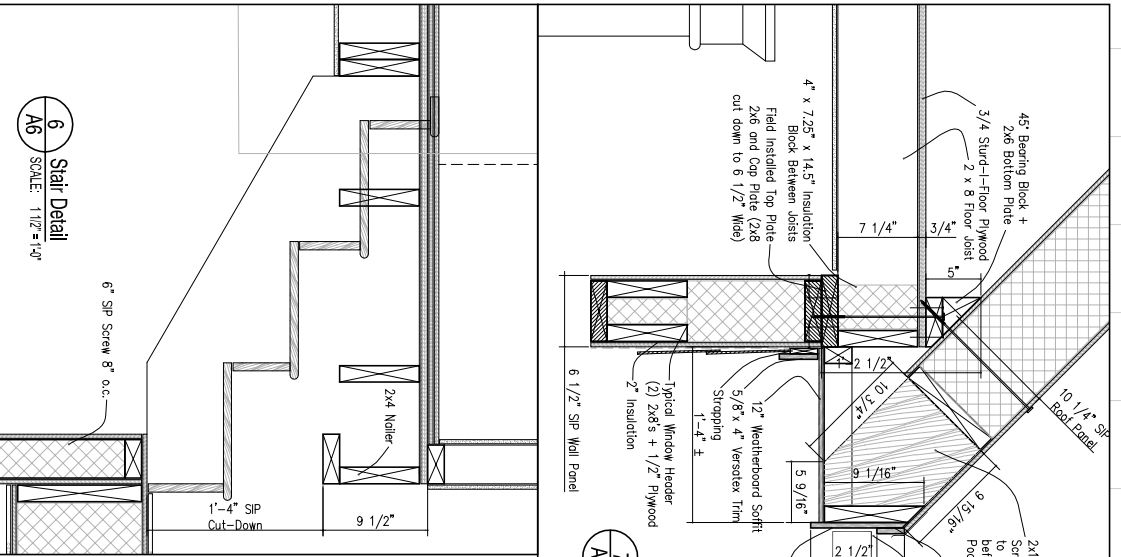
**10** Apartment Foundation  
SCALE: 1 1/2" = 1'-0"



**11** Apartment Foundation  
SCALE: 1 1/2" = 1'-0"

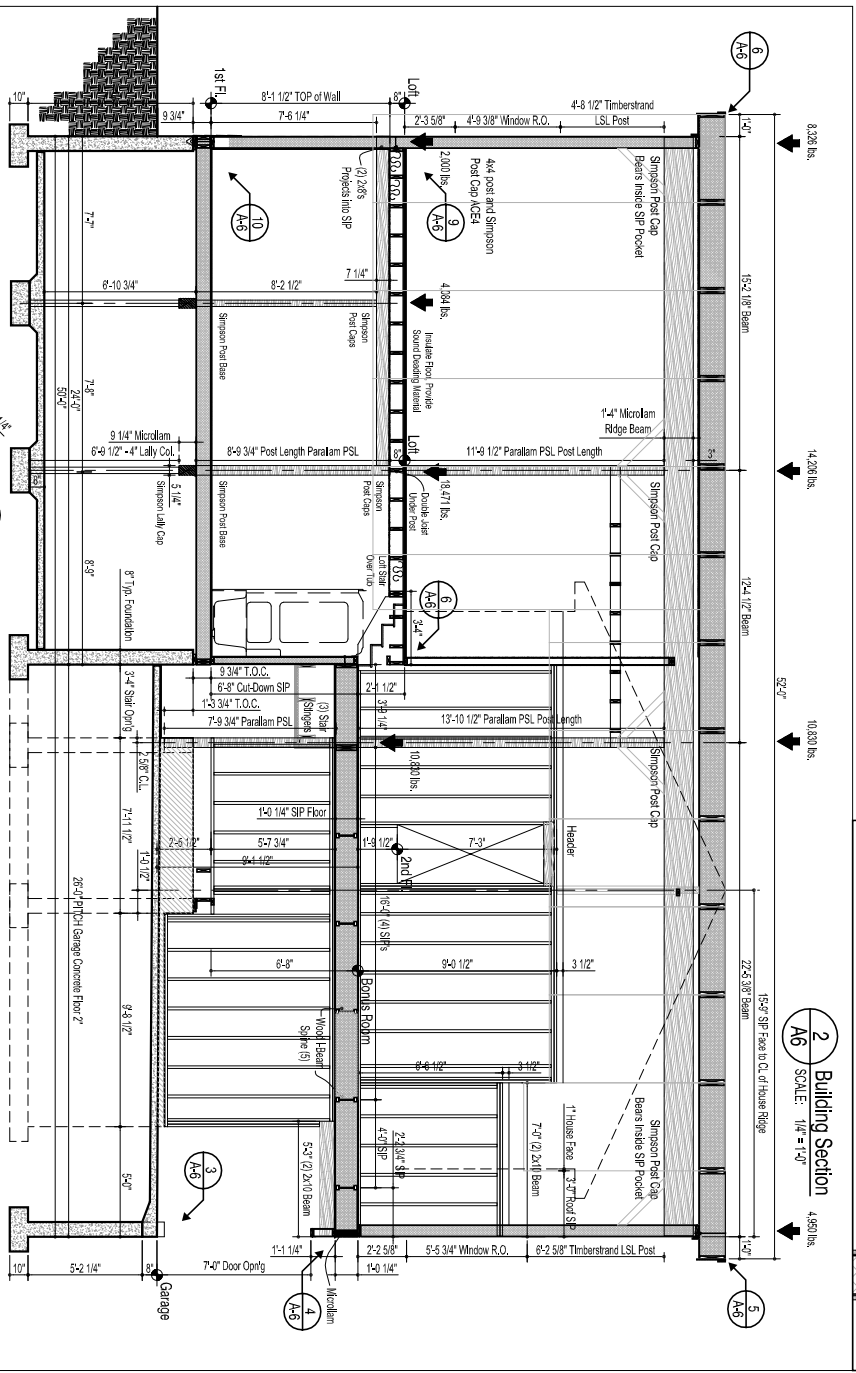


**1** Building Section  
SCALE: 1/4" = 1'-0"

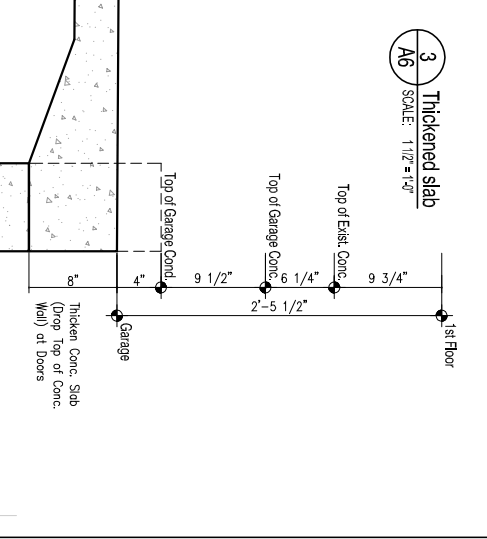


**2** Building Section  
SCALE: 1/4" = 1'-0"

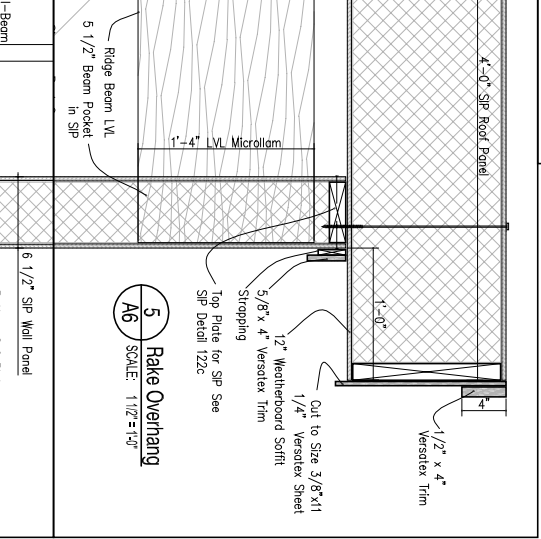
**6** Stair Detail  
SCALE: 1 1/2" = 1'-0"



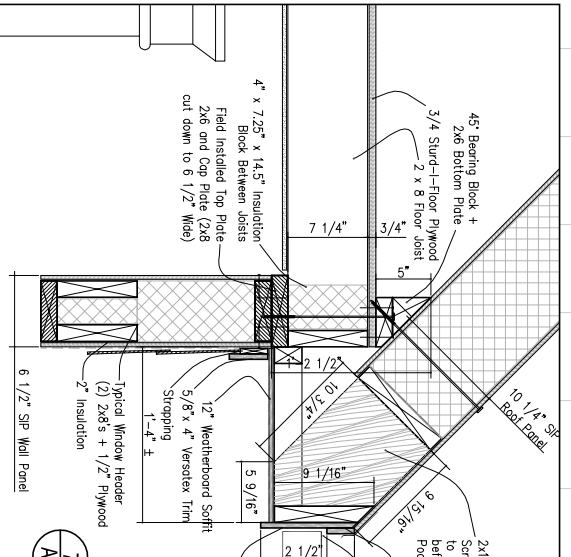
**3** Thickened Slab  
SCALE: 1 1/2" = 1'-0"



**4** Garage Door Header  
SCALE: 1 1/2" = 1'-0"



**5** Rake Overhang  
SCALE: 1 1/2" = 1'-0"



**7** Apartment Eave  
SCALE: 1/4" = 1'-0"

PROGRESS SET NOT FOR CONSTRUCTION

Blackwell Residence  
361 Ludlow Street, Portland ME  
Building Sections  
and Details

revision #/ date	Revision Reason

**Clyde Blackwell Architect**  
Efficient Sustainable Shelter  
361 Ludlow Street, Portland ME 04102  
Tel. (207) 671-9904

**A6**  
sheet number  
issued:  
project no.

date 07-27-08 drawn by 1/4" = 1'-0"