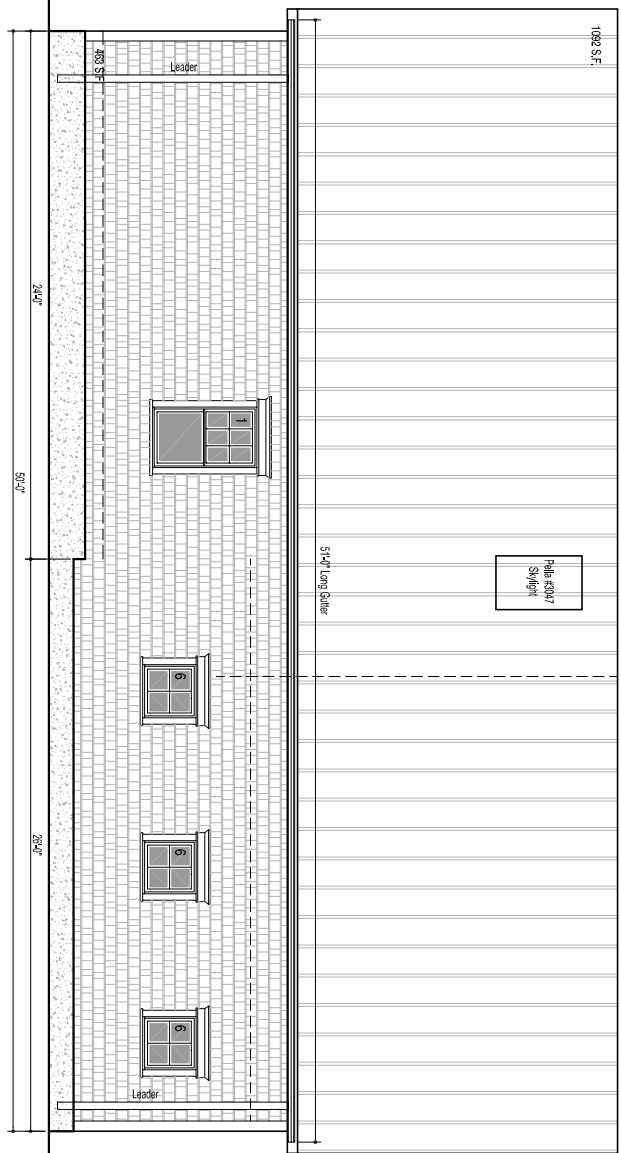
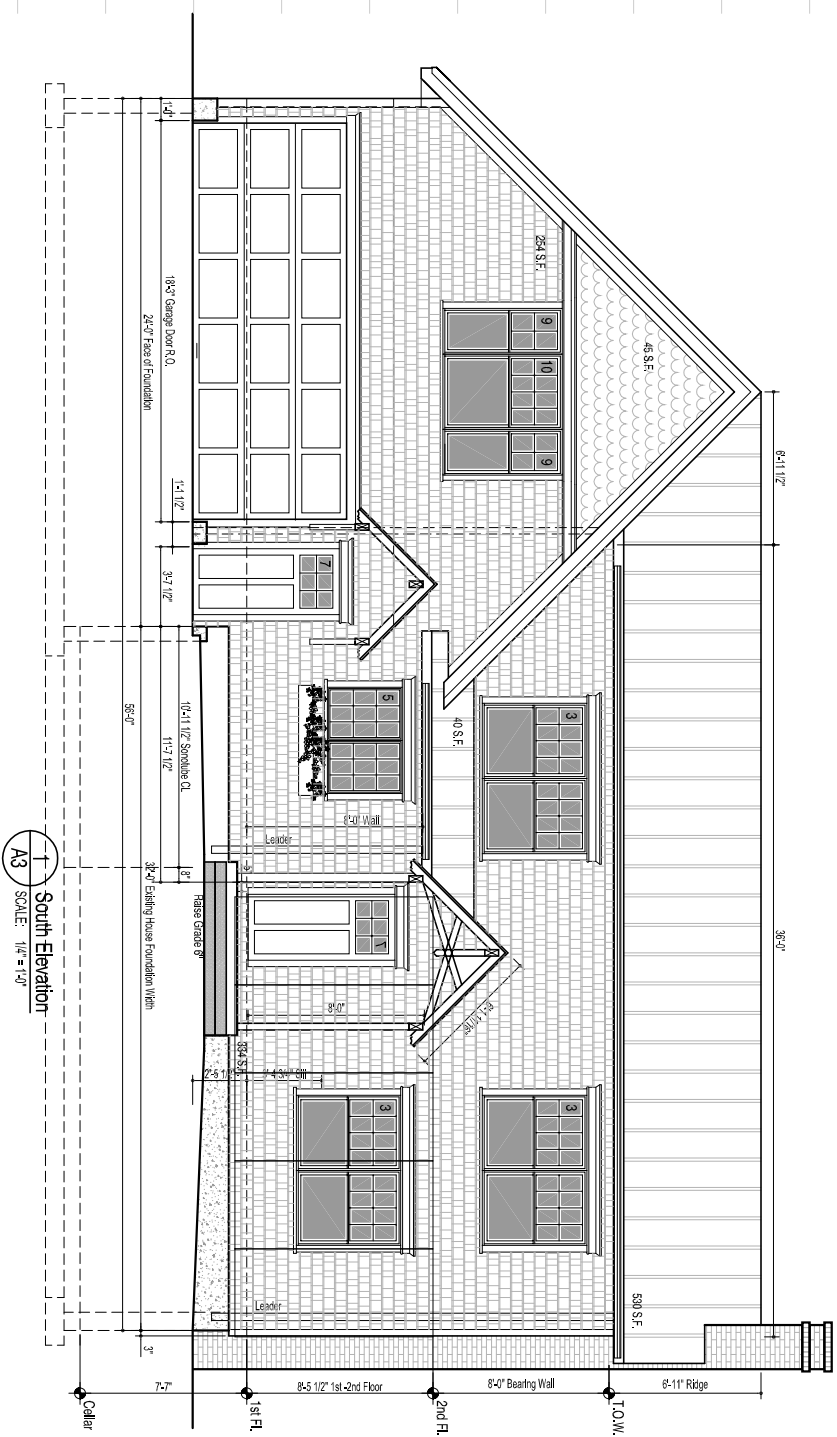


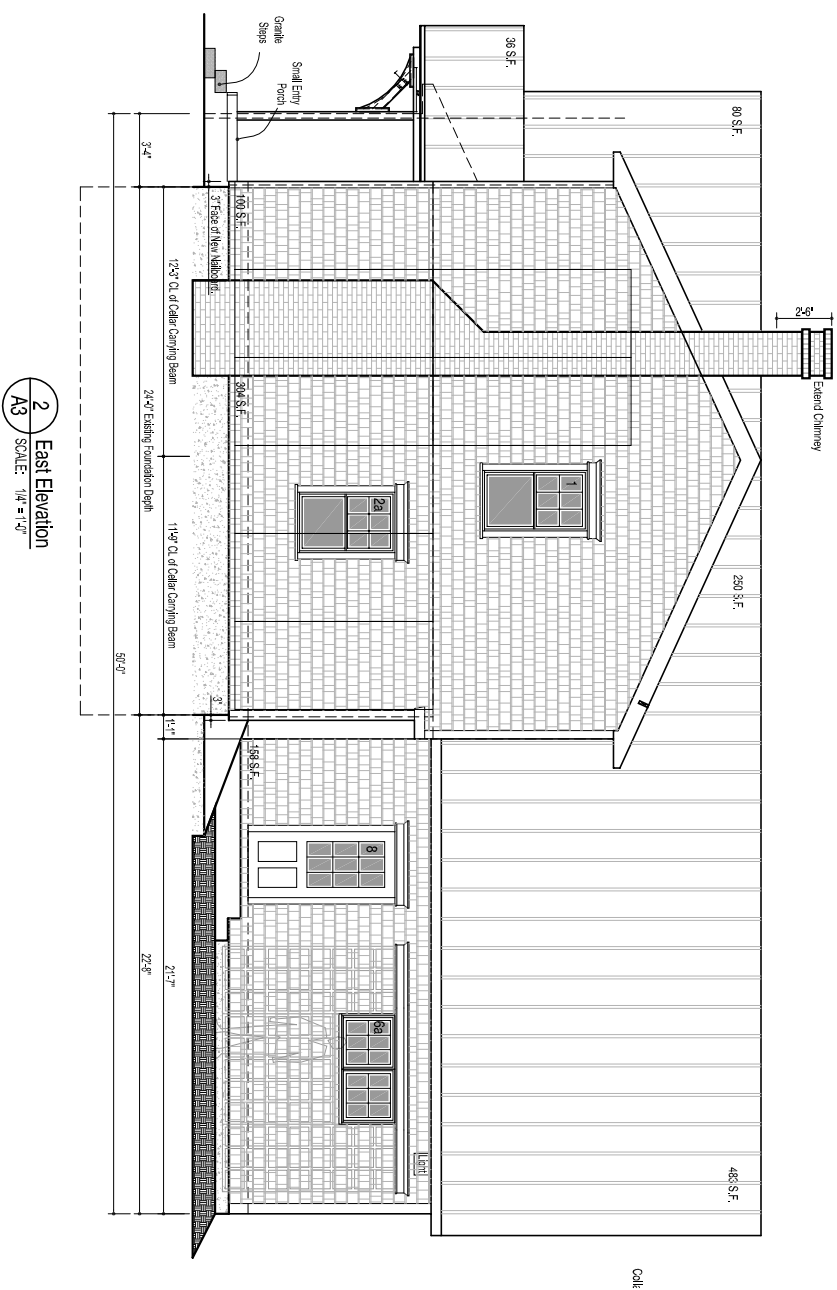
4 North Elevation
A3 SCALE: 1/4" = 1'-0"



3 West Elevation
A3 SCALE: 1/4" = 1'-0"



1 South Elevation
A3 SCALE: 1/4" = 1'-0"



2 East Elevation
A3 SCALE: 1/4" = 1'-0"

Typical Elevation Notes and Exterior Materials

1. Pella Exterior Windows and Doors: See Drawing SFP4
2. PVC Membrane "Standing Seam" Roofing by Sunbelt "Decor Profile Roof System". Provide 4" "Edge-Tie" Perimeter Edging by Sunbelt. Color: To Be Determined
- 3a. Cement Fiber Siding 6"-6 1/4" Exposure by Certainteed - "Cedar Lap, Weatherboards" or James Hardie - "Select CedarMill, Hardiplank"
- 3b. Cement Fiber Siding 7" Exposure by Certainteed - "Random Square Straight Edge Weatherboards" or James Hardie - "Straight Edge Notched Panel, Hardishingle"
- 3c. Blind Nail Cement Fiber Siding with 6d Roofing nails, double HD galvanized with 3/8" diameter head 12" o.c. (Allowable wind pressure 24.0 p.s.f., 100 mph in 'B' Exposures up to 30 ft.
- 3d. Cement Fiber Panel: splay be Certainteed Duragress Weatherboards smooth. All Panels shall be pre-primed with "PrimerPlus" by Valspar Corporation.
- 3e. Provide 4" x 8" Weather Board Panels Ripped into 1"-4" Strips and Pre-Applied to Exposed SIP Eaves.
- 3f. All Cement Fiber Materials shall be Prefinished. Color to be determined.
4. Sealants: Provide a General Purpose Polyurethane Sealant "Dyneral I-XL" by Pecora Corporation. Verify compatibility with PVC Trim (Silicone is NOT Compatible). Caulk Between Trim and Windows/Doors. Color to be selected from Manufacturer's Standards.
5. Trimboard: Provide Free-From Cellulose PVC Trim by Versatex. Follow manufacturers recommendations for installation. Set and fill nail holes. Product is not compatible with silicone sealants. Provide the Following:
A. Eave Trimboard: 5/8" x 8"
B. Door and Window Jamb: 5/8" x 4"
C. Window Sill: Historic Sill 1 3/4" x 2 1/32"
D1. Door and Window Head: 5/4" x 8"
D2. Rona Crown: 2" x 1 1/2" (Mitered Ends)
E. Corner Boards: 6" (One Piece)
F. Stair/Skin Board: 5/4" x 8" (Starter)
G. Bondboard: 5/4" x 4"
H. Large Window Jamb: 5/8" x 6"
6. Paint exterior trim and remaining wood on existing building. See note on detail 1/drawing A1 regarding painting of Speckles trim and other wood products.
7. Structural Insulated Panels (S.I.P.): Follow manufacturer's Recommendations Regarding: Storage, Lifting, and Installation Methodology and Spine Installation. Provide: Joint Sealants, Expanding Foam, and Fasteners per Schedule.
8. Flashing Tape: Provide "Vapor Plus" by Grace of Window and Door Openings. Building Corners and Foundation Sill Plots. Use width: 6" for 1/2" Trim, 9" for 5/12" - 7 1/4" Trim, 12" Larger Trim = Trim + 2+ - 3". Installed Before Window on Sill
9. "Home Slicker Plus Type" .26" thick by Benjamin Obdyke (800) 523-5261 Cover entire surface of SIP panels with "Type" against face of OSB. Whop top & bottom w/ "Slicker Screen".

CONSTRUCTION Set

Blackwell Residence
361 Ludlow Street, Portland ME
Exterior Elevations

revision #/ date	Revision Reason
date 07-27-26	drawn by 1/4" = 1'-0"

Efficient Sustainable Shelter

361 Ludlow Street, Portland ME 04102

Clyde Blackwell
Architect
Tel. (207) 671-9904

A3
sheet number
issued:
project no.