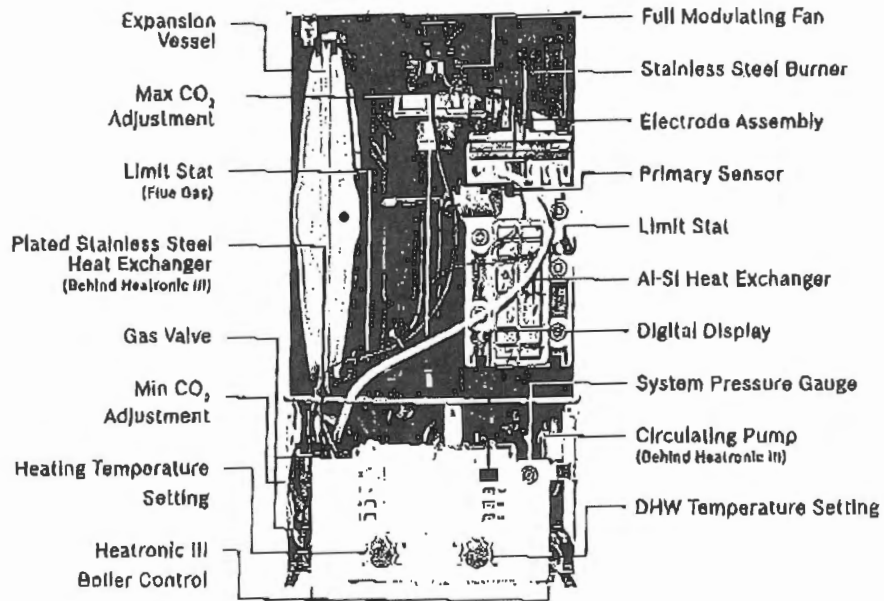




Inspectors Division
Date: 07/07/15

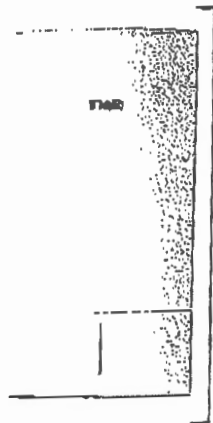
6 | Bosch Greenstar Residential Space and Water Heating Boiler Solutions

A Look Inside the Greenstar Combi Boiler



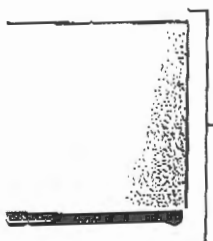
Optional Base

The Greenstar installation stand is a convenient option when retrofitting a residential boiler. We can now offer our gas high efficiency condensing Greenstar wall-boilers on the floor if wall mounting is not convenient.



Wall Mounted

or



Floor Standing with Optional Base

End user benefits

- ▶ Small footprint - offers modern appliance style appearance
- ▶ Solution for a floor boiler with 95% AFUE, saving fuel and qualifying for utility rebate (where available)
- ▶ Bosch Greenstar Installation Stand is visually appealing with matching color and profile of boiler

Installer benefits

- ▶ Same boiler on wall and floor - fits all Greenstar models
- ▶ Installers are already familiar with the appliance - same commissioning, set-up, and applications
- ▶ No additional training necessary - already trained on Greenstar boilers
- ▶ Same connections and accessories as wall boiler
- ▶ Easy service and accessibility of components at comfortable height
- ▶ Robust, sturdy construction with floor support bracket (not just a frame on the floor)
- ▶ Floor standing combi boiler solution available
- ▶ Sufficient space for condensate pump below the boiler
- ▶ Possibility to prepipe the stand offsite

Stand dimensions: 13 3/4" deep, by 17 1/2" wide by 20 1/2" high
Total height of stand and boiler: 54 1/2"



Registered Dealer
Date: 07/07/15

www.boschheatingandcooling.com

Technical Specifications

Model	Heating and Tankless Hot Water				Heating ^a			
	Greenstar Combi 100 ZWB20-3	Greenstar Combi 125 ZWB25-3	Greenstar Combi 151 ZWB42-3	Greenstar 77 ZB116-3	Greenstar 79 ZBN21-3	Greenstar 100 ZB124-3	Greenstar 131 ZBN35-3	Greenstar 151 ZBN42-3
Performance Specifications								
Fuel	NG / LP				NG / LP			
Input Maximum (MBH)	100.8	131.8	151.6	57.2	79.2	100.8	131.9	151.6
Input Minimum (MBH)	34.6	36.0	36.0	12.9	23.9	24.6	36.0	36.0
DOE Heating Capacity (MBH)	89.4	116.7	134.4	50.0	71	89.4	116.7	134.4
Net I=B=R (MBH)	79	103	117	45	62	79	103	117
AFUE	95%	95%	95%	95%	95%	96%	95%	95%
DHW Flow Max (ΔT at 72°F), GPM	2.65	3.2	4.0	not applicable				
Water Volume, Gal (L)	0.952 (3.5)				0.952 (3.5)			
Technical Data								
Weight, lbs (without Packaging, kg)	110.2 (50)				103.6 (47)			
Dimensions, in (W x H x D)	17 1/2 x 33 1/2 x 13 1/2				17 1/2 x 33 1/2 x 13 1/2			
Minimum Recommended Pipe Size, in	1				1			
Supply Tappings, in	1				1			
Return Tappings, in	1				1			
Domestic Cold Water Supply, in	3/4				not applicable			
Domestic Hot Water Supply, in	3/4				not applicable			
Gas Connection Size, in	3/4				3/4			
Vent Size, in	2-3				2-3			
Vent Material	PVC / CPVC / PP				PVC / CPVC / PP			
Combustion Air Size, in	2-3				2-3			
High Altitude Capability	No De-Rating up to 6,000'	No De-Rating up to 6,000'	De-Rating 3% per 1,000'	No De-Rating up to 6,000'	No De-Rating up to 6,000'	No De-Rating up to 6,000'	No De-Rating up to 6,000'	De-Rating up 3% per 1,000'
Permissible Inlet Gas Pressure	<ul style="list-style-type: none"> • NG in. W.C. • LP (propane) in. W.C. 				<ul style="list-style-type: none"> • 3.5-10.6" • 0.13" (19.9-32.3) 			

^a Heat only Greenstar models may be used with indirect water tanks to provide domestic hot water.
^b Copies of original warranties in their entirety are available at www.boschheatingandcooling.com

Optional Accessories

Floor Standing Base	FB100 Control	ICM Control	Cleaning Tool 1060	Cleaning Tool 1061
Base (All Models)	Room Sensor	Cascade Control Module (4 Max)	Cleaning Brush Set	Cleaning Tool

